



Playground Equipment

A WORLD OF **PLAY** AWAITS YOU!



Call us: 01252 641740

play-scene.co.uk

info@play-scene.co.uk

A Little About Us



We are Playscene...and this is where the fun begins.

Making playtime fun is the core principle we keep in mind throughout the meticulous process we go through to perfect all our equipment and designs.

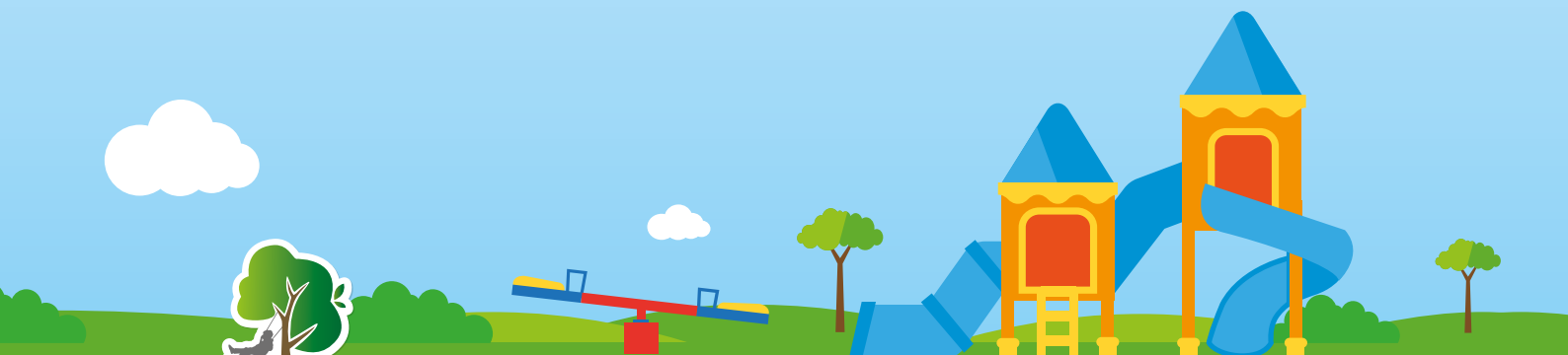
As the UK's premier provider of playground equipment, the Playscene team are able to creatively translate your ideas into playground environments that children will love for years to come. We provide safe, secure and robust playground equipment that conforms to all Health and Safety regulations.

We appreciate and understand the benefits that come from play, particularly in a child's early years where imagination, confidence, judgement and social awareness are developed alongside physical activity.

The outdoors is where children can really think for themselves, where they create their own environments and spaces whilst encountering endless opportunities. They discover, witness and question the world around them through their own unique experiences. It's these outside the classroom experiences that we help create. From our initial consultation, through the design process, to the final installation, we see each assignment as an opportunity to help improve the learning environment - always keeping the children who will be using the end product at the forefront of our mind.

It is this highly bespoke, holistic approach that means we can deliver maximum play value for your school.

We work hard to deliver more than just a playground.



Contents

A Little About Us2

Contents.....	3
Our Process	4
Case Studies.....	5

Active Play.....6

Combination Trails	7
Low Level Trail Items.....	9
High Level Trail Items	12
Lumber Stacks.....	13
Early Years Adventure Trails	15
Fitness Equipment	16
Multiplay Towers	18

Imaginative Play21

Imaginative Play Equipment	22
Wall Panels.....	24
Activity Play Panels.....	25
Musical Instruments.....	27
Sand & Water Play	29

Outdoor Furniture30

Junior Picnic & Activity Table.....	31
Playtime Furniture	32
Frimley Picnic & Activity Tables	33
Story Teller Areas.....	34
Simple Bench Seats	35
Planter Boxes	35

Markings36

Thermoplastic Markings	36
Painted Markings	37

Fencing.....38

Surfacing.....39

Guarantees42

Terms & Conditions.....43



Our Process

If you're keen to chat through ideas, get in touch,
our process is simple!

1. Consultation

We work with you to deliver the outdoor play area that suits your needs - it's a consultative, inclusive approach. We take time to talk, identify your requirements and create a bespoke solution that suits your budget and maximises your outdoor space. The consultation process is free and will involve a site visit and an informal chat to go through ideas.

2. Design and Quote

The next stage of the process will be for our team to work with your ideas and requirements to create a bespoke design. We will then supply you with the colourful designs along with an itemised breakdown of costs.

3. Feedback

This is your opportunity to give us feedback - as we said it's a consultative approach, so we're keen to work with you to perfect every detail of the design.

4. Project Management and Installation

This is where the implementation of the design starts. Our specialist teams will work tirelessly to construct your outdoor area, with an eye for detail, whilst also working to specified timeframe and causing minimum disruption.

5. Follow Up and Maintenance

Only when you're 100% happy, is the project considered complete.

You will receive a maintenance pack which will provide you with advice on maintenance, information on guarantees and useful contact numbers should you need any further support.



Case Studies

Mark Ratchford, Head Teacher, Glapthorn Primary School

"I have just got back from my holiday and was very pleased to see how good the playground looks! Thank you for a good job the line markings and bespoke work are excellent - just what the children wanted. I am looking forward to seeing their excited faces when they come back to school next week."



Vicki Wallace, Crofton Anne Dale Junior School

"I just wanted to say a huge thank you to yourself and the two people who came out to fit the lovely new benches. They look fantastic and I'm sure the children will love them upon their return in a few weeks."

The two men who carried out the work were fantastic and worked very hard that day well into the evening. Both myself and Jane (Acting Head) were very impressed and Jane has already said she wants us to use you again once funds are available to do school picnic benches.

Thank you once again."

Maggie Angele, Consultant Head Teacher Roman Fields

"The Trim trail looks fabulous and the men that were involved in the installation done a sterling job. As I left the office at 18:00 on Thursday, your staff were still busy, making sure the trim trail was installed to the highest standard. I will definitely recommend your services to everybody as you certainly went that extra mile."

Once again, a huge thank you to you and your staff, I am so pleased with the service that you have given."



Active Play

Providing endless opportunities for children to become more physically confident, maintaining and supporting their health and fitness with a fun and extensive range of Active play products.



Combination Trails

Our range of 10 Combination Trails have been individually designed using our most popular pieces of equipment, encouraging use of a variety of physical and mental skills whilst providing an array of different activities.



Combination Trail 1 TRAIL1

Space Required (LxW):
21000mm x 1600mm
Free Fall Height: <0.6m



Combination Trail 2 TRAIL2

Space Required (LxW):
21000mm x 640mm
Free Fall Height: <0.6m



Combination Trail 3 TRAIL3

Space Required (LxW):
20000mm x 1300mm
Free Fall Height: <0.6m



Combination Trail 4 TRAIL4

Space Required (LxW):
23000mm x 1100mm
Free Fall Height: Max 1.89m



Combination Trail 5 TRAIL5

Space Required (LxW):
17500mm x 1200mm
Free Fall Height: <0.6m





Combination Trail 6
TRAIL6

Space Required (LxW):
24000mm x 1600mm
Free Fall Height: <0.6m

Combination Trail 7
TRAIL7

Space Required (LxW):
19500mm x 1200mm
Free Fall Height: <0.6m



Combination Trail 8
TRAIL8

Space Required (LxW):
13750mm x 600mm
Free Fall Height: <0.6m

Combination Trail 9
TRAIL9

Space Required (LxW):
9000mm x 800mm
Free Fall Height: <0.6m



Combination Trail 10
TRAIL10

Space Required (LxW):
10500mm x 1200mm
Free Fall Height: <0.6m

Low Level Trail Items



Our low level trim trail items are designed to develop coordination, upper and lower body strength, core stability, confidence and inter personal skills. This is all made possible by getting the children to balance, stretch, climb and traverse and to interact with others.

All our low level trim trail equipment have a free fall height of less than 0.6 metres, so minimal safer surfacing is required.



Balance Walk
BW01

Dimensions (LxWxH):
2400mm x 125mm x 433mm
Free Fall Height: <0.6m



Sloping Balance Walk
SBW01

Dimensions (LxWxH):
2400mm x 125mm x 434mm
Free Fall Height: <0.6m



Three Bar Balance
TBB01

Dimensions (LxWxH):
5500mm x 1115mm x 511mm
Free Fall Height: <0.6m



Balance Challenge
BC01

Dimensions (LxWxH):
6900mm x 1600mm x 434mm
Free Fall Height: <0.6m



V Balance Beam
VBB01

Dimensions (LxWxH):
990mm x 2050mm x 473mm
Free Fall Height: <0.6m



Balance Slalom
BS01

Dimensions (LxWxH):
3250mm x 1200mm x 585mm
Free Fall Height: <0.6m



Balance Junction
BJ01

Dimensions (LxWxH):
2400mm x 2400mm x 550mm
Free Fall Height: <0.6m



Low Log Roll
LLR01

Dimensions (LxWxH):
3300mm x 200mm x 500mm
Free Fall Height: <0.6m



Balance Weave
BWE01

Dimensions (LxWxH):
2800mm x 375mm x 1800mm
Free Fall Height: <0.6m



Sloping Balance Weave
SBWE01

Dimensions (LxWxH):
2792mm x 375mm x 1800mm
Free Fall Height: <0.6m



Double Sloping Balance Weave
DSBW01

Dimensions (LxWxH):
4589mm x 1150mm x 1800mm
Free Fall Height: <0.6m



Log Hops (set of 3)
LH01

Dimensions (LxWxH):
4525mm x 2400mm x 303mm
Free Fall Height: <0.6m





Log Snake
LS01

Dimensions (LxWxH):
1565mm x 410mm x 500mm
Free Fall Height: <0.6m



Wobble Log Bridge
WLB01

Dimensions (LxWxH):
2750mm x 1200mm x 1700mm
Free Fall Height: <0.6m



Burma Bridge
BB01

Dimensions (LxWxH):
3000mm x 1125mm x 1450mm
Free Fall Height: <0.6m



Wobble Bridge
WB01

Dimensions (LxWxH):
2700mm x 1200mm x 1400mm
Free Fall Height: <0.6m



Rope Bridge
RB01

Dimensions (LxWxH):
2650mm x 1125mm x 1400mm
Free Fall Height: <0.6m



Rope Tunnel
RT01

Dimensions (LxWxH):
2700mm x 1000mm x 1375mm
Free Fall Height: <0.6m



Suspension Bridge
SUSB01

Dimensions (LxWxH):
2225mm x 1300mm x 1400mm
Free Fall Height: <0.6m



Free Standing Tunnel
FST01

Dimensions (LxWxH):
1338mm x 950mm x 992mm
Free Fall Height: <0.6m



Under Ground Tunnel
UGT01

Dimensions (LxWxH):
1925mm x 1450mm x 1200mm
Free Fall Height: <0.6m



Drop Rope Traverse
DRT01

Dimensions (LxWxH):
3350mm x 250mm x 2700mm
Free Fall Height: <0.6m



Rope Walk
RW01

Dimensions (LxWxH):
3350mm x 250mm x 2700mm
Free Fall Height: <0.6m



Cross Rope
CR01

Dimensions (LxWxH):
3350mm x 250mm x 2700mm
Free Fall Height: <0.6m



Rope Weave
RWE01

Dimensions (LxWxH):
3350mm x 300mm x 2700mm
Free Fall Height: <0.6m



Log Rope Traverse
LRT01

Dimensions (LxWxH):
3000mm x 600mm x 2575mm
Free Fall Height: <0.6m



Log Roll
LR01

Dimensions (LxWxH):
3350mm x 250mm x 2700mm
Free Fall Height: <0.6m



Tarzan Traverse
TT01

Dimensions (LxWxH):
3350mm x 300mm x 2700mm
Free Fall Height: <0.6m



Traverse Weave Combo
TWC01

Dimensions (LxWxH):
2804mm x 678mm x 2100mm
Free Fall Height: <0.6m



Jigsaw Traverse Wall
JIG01

Dimensions (LxWxH):
825mm x 2670mm x 1850mm
Free Fall Height: <0.6m



Traverse Wall
TW01

Dimensions (LxWxH):
2850mm x 150mm x 1800mm
Free Fall Height: <0.6m



Zig Zag Traverse Wall
ZZTW01

Dimensions (LxWxH):
3805mm x 955mm x 1800mm
Free Fall Height: <0.6m



Crawl Net
CN01

Dimensions (LxWxH):
2107mm x 1099mm x 600mm
Free Fall Height: <0.6m



**Solar Powered
Stopwatch Panel** TTSTOP

Description:
Features a high quality and durable solar panel for power.



Heave Beam (set of 3)
HB03

Dimensions (LxWxH):
5125mm x 1150mm x 600mm
Free Fall Height: <0.6m



Leap Frog (set of 5)
LF05

Dimensions (LxWxH):
9125mm x 125mm x 600mm
Free Fall Height: <0.6m



Rope Junction
RJ01

Dimensions (LxWxH):
2850mm x 1500mm x 1600mm
Free Fall Height: <0.6m



Slalom Rope Walk
SRW01

Dimensions (LxWxH):
4159mm x 695mm x 1850mm
Free Fall Height: <0.6m



Tightrope Crossing
TRC01

Dimensions (LxWxH):
4695mm x 850mm x 1200mm
Free Fall Height: <0.6m



Walk and Stretch Posts
W&S01

Dimensions (LxWxH):
2225mm x 635mm x 1000mm
Free Fall Height: <0.6m



Spring Disc
SDI01

Dimensions (LxWxH):
440mm x 420mm x 350mm
Free Fall Height: <0.6m



1.5m Spring plank
SPK02

Dimensions (LxWxH):
1480mm x 250mm x 390mm
Free Fall Height: <0.6m



Spider Web Net
SWN01

Dimensions (LxWxH):
3243mm x 3243mm x 1500mm
Free Fall Height: <0.6m



**200mm Stepping Logs
(set of 4)** SST04

Dimensions (LxWxH):
200mm x 200mm x 400mm
Free Fall Height: <0.6m



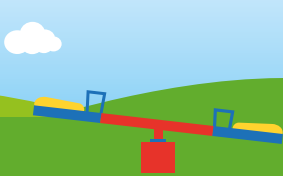
Log Snake Weave
LSW01

Dimensions (LxWxH):
1790mm x 661mm x 1500mm
Free Fall Height: <0.6m



Log Stack
LSK01

Dimensions (LxWxH):
1250mm x 1800mm x 560mm
Free Fall Height: <0.6m



High Level Trail Items

Our high level trim trail items offer a challenge for more able students and something to aspire to for the less confident.

These trim trail items require safety surfacing, please see page 39 for our safety surfacing options.



A-Frame Low
AFL01

Dimensions (LxWxH):
1516mm x 1974mm x 1517mm
Free Fall Height: 1.5m



A-Frame Low with Nets
AFLN01

Dimensions (LxWxH):
1516mm x 1974mm x 1517mm
Free Fall Height: 1.5m



1.5m Chin Ups
CHU01

Dimensions (LxWxH):
3200mm x 125mm x 1500mm
Free Fall Height: 1.5m



Climb Net
CN01

Dimensions (LxWxH):
1500mm x 2060mm x 1500mm
Free Fall Height: 1.5m



Log Hurdles
LHD01

Dimensions (LxWxH):
8125mm x 2400mm x 903mm
Free Fall Height: 0.903m



Monkey Bar Log
MBL01

Dimensions (LxWxH):
3450mm x 720mm x 2285mm
Free Fall Height: 2.175m



Over and Under
O&U01

Dimensions (LxWxH):
2925mm x 2400mm x 1128mm
Free Fall Height: 1.128m



Parallell Bars
PB01

Dimensions (LxWxH):
2400mm x 725mm x 1175mm
Free Fall Height: 1.175m



Run & Leap
R&L01

Dimensions (LxWxH):
2150mm x 2400mm x 888mm
Free Fall Height: 0.888m



Timber Gate Climber
TGC01

Dimensions (LxWxH):
1900mm x 312mm x 1900mm
Free Fall Height: 1.9m



Twist Net
TN01

Dimensions (LxWxH):
3150mm x 2290mm x 1900mm
Free Fall Height: 1.9m



Wall Net Combo
WNC01

Dimensions (LxWxH):
6770mm x 1500mm x 2380mm
Free Fall Height: 1.139m

Lumber Stacks



Our Lumber stack range provides high performance timber based play equipment that has been innovatively designed to replicate a natural, challenging and enjoyable play environment. Using both timber and rope the lumber stacks encourage children to use their imagination to develop both physical and social skills. The lumber stacks come in a range of sizes to suit your playground needs.



Lumber Stacks 1
LSTACK01

Dimensions (LxWxH):
2450mm x 2850mm x 2550mm
Free Fall Height: 1.5m



Lumber Stacks 2
LSTACK02

Dimensions (LxWxH):
3950mm x 3000mm x 2700mm
Free Fall Height: 1.5m



Lumber Stacks 3
LSTACK03

Dimensions (LxWxH):
5420mm x 3970mm x 2700mm
Free Fall Height: 1.5m



Lumber Stacks 4
LSTACK04

Dimensions (LxWxH):
3320mm x 6800mm x 2925mm
Free Fall Height: 1.5m



Lumber Stacks 5
LSTACK05

Dimensions (LxWxH):
7400mm x 4450mm x 3000mm
Free Fall Height: 1.8m





Lumber Stacks 6
LSTACK06

Dimensions (LxWxH):
4477mm x 2579mm x 2990mm
Free Fall Height: 1.5m



Lumber Stacks 7
LSTACK07

Dimensions (LxWxH):
5822mm x 3833mm x 2850mm
Free Fall Height: 1.5m



Lumber Stacks Midi
LSTACKM01

Dimensions (LxWxH):
2510mm x 2295mm x 1800mm
Free Fall Height: 0.9m



Lumber Stacks Midi with Deck
LSTACKM02

Dimensions (LxWxH):
2510mm x 3140mm x 1800mm
Free Fall Height: 0.9m



Lumber Stacks Midi with Deck and Slide LSTACK03

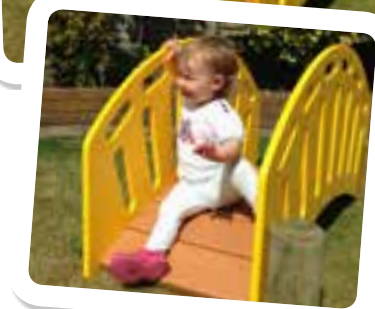
Dimensions (LxWxH):
2725mm x 4410mm x 1800mm
Free Fall Height: 0.9m



Early Years Adventure Trail

Our early years adventure Trail units are a collection of low level adventure trail products which has been specifically designed for nurseries and children centres.

The equipment is available in a range of bright colours, panels are made from HDPE plastic, the range features recycled plastic and slip resistant foot treads and stainless steel fixings ensure its durability.



Fun Trail Scramble Tunnel
FTTUN

Dimensions (LxWxH):
870mm x 1080mm x 850mm
Free Fall Height: <0.6m



Fun Trail Stepping Stones
FTSST

Dimensions (LxWxH):
1250mm x 200mm x 470mm
Free Fall Height: <0.6m



Fun Trail Step Ups
FTSTU

Dimensions (LxWxH):
1250mm x 600mm x 450mm
Free Fall Height: <0.6m



Fun Trail Walk and Stretch
FTWST

Dimensions (LxWxH):
1350mm x 582mm x 900mm
Free Fall Height: <0.6m



Fun Trail Mini Bridge
FTHB

Dimensions (LxWxH):
1200mm x 697mm x 645mm
Free Fall Height: <0.6m



Fun Trail Curved Stepping Stones
FTSTC

Dimensions (LxWxH):
1110mm x 405mm x 470mm
Free Fall Height: <0.6m



Fun Trail Curved Balance Walk
FTBWC

Dimensions (LxWxH):
2820mm x 360mm x 400mm
Free Fall Height: <0.6m



Fun Trail Balance Walk
FTBW

Dimensions (LxWxH):
2920mm x 200mm x 400mm
Free Fall Height: <0.6m



Early Years Fun Trail
FTCT

Dimensions (LxWxH):
14080mm x 1080mm x 900mm
Free Fall Height: <0.6m

Fitness Equipment

A collection of individual fitness trail items, ideal for creating fitness circuits, with as few or as many stations as needed. We have designed these items to be durable, to suit teenage years through to adult, ideal for sports fields, community grounds, leisure centre's and schools. We also offer signage to allow instruction on individual items as necessary.



Embankment Ramp
EMBR01

Dimensions (LxWxH):
1956mm x 1325mm x 1200mm
Free Fall Height: 1.2m



2.4m Chin Ups
CHU02

Dimensions (LxWxH):
3200mm x 125mm x 2400mm
Free Fall Height: 2.4m



A-Frame High with Nets
AFHN01

Dimensions (LxWxH):
2110mm x 2080mm x 2000mm
Free Fall Height: 1.9m



A-Frame High
AFH01

Dimensions (LxWxH):
2093mm x 1974mm x 2017mm
Free Fall Height: 2m



Assault Net
AN01

Dimensions (LxWxH):
2651mm x 450mm x 2160mm
Free Fall Height: 2.16m



Assualt Wall
AW01

Dimensions (LxWxH):
1500mm x 450mm x 2100mm
Free Fall Height: 2.1m



Climb Ladder
CL01

Dimensions (LxWxH):
150mm x 1350mm x 1730mm
Free Fall Height: 1.5m



Inclined Sit Up (set of 3)
ISUP01

Dimensions (LxWxH):
1717mm x 900mm x 1250mm
Free Fall Height: 1.25m



Monkey Bars
MB01

Dimensions (LxWxH):
2650mm x 1110mm x 2050mm
Free Fall Height: 2.025m



Rope Climb
RC01

Dimensions (LxWxH):
2900mm x 450mm x 3000mm
Free Fall Height: 3m



Sloping Monkey Bar
SMB01

Dimensions (LxWxH):
3900mm x 760mm x 2850mm
Free Fall Height: 2.6m



Sloping Stride Jumps
SSJ01

Dimensions (LxWxH):
8000mm x 2100mm x 800mm
Free Fall Height: 0.8m



Tarzen Ring Beam
TRB01

Dimensions (LxWxH):
2955mm x 1110mm x 2200mm
Free Fall Height: 1.895m



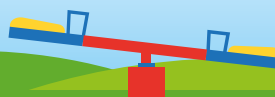
Vault & Leap
V&L01

Dimensions (LxWxH):
10000mm x 4300mm x 1200mm
Free Fall Height: 1.2m



Zig Zag Parralell Bars
ZZPB01

Dimensions (LxWxH):
3805mm x 955mm x 1800mm
Free Fall Height: 1.9m



Multiplay Towers

Multiplay towers can make a great focal point to any playground as they have multiple uses and can be used by several children at the same time. This kind of equipment encourages children to cooperate, communicate and play together whilst developing social and physical skills.



Multiplay Tower Single Deck 1

Product codes below

Deck Heights:

900mm	1200mm	1500mm
MPTW19	MPTW112	MPTW115



Multiplay Tower Single Deck 2

Product codes below

Deck Heights:

900mm	1200mm	1500mm
MPTW19	MPTW112	MPTW115



Multiplay Tower Double Deck 1

Product codes below

Deck Heights:

900mm	1200mm	1500mm
N/A	MPTWD112	MPTWD115



Multiplay Tower Double Deck 2

Product codes below

Deck Heights:

900mm	1200mm	1500mm
N/A	MPTWD212	MPTWD215



Multiplay Tower Double Deck 3

Product codes below

Deck Heights:

900mm	1200mm	1500mm
MPTWD39	MPTWD312	MPTWD315



Our multi play tower system allows you to choose the individual elements you would like in your bespoke structure. We will advise you on how best to maximize budget and play.



Multiplay Arch Ladder
Product codes below

Deck Heights:

600mm	N/A
900mm	MPAL9
1200mm	MPAL12
1500mm	MPAL15



Multiplay Bridge
Product codes below

Deck Heights:

600mm	MPB
900mm	MPB
1200mm	MPB
1500mm	MPB



Multiplay Cargo Net Bridge
Product codes below

Deck Heights:

600mm	N/A
900mm	MPCNB9
1200mm	MPCNB12
1500mm	MPCNB15



Multiplay Climbing Wall
Product codes below

Deck Heights:

600mm	N/A
900mm	MPCW9
1200mm	MPCW12
1500mm	MPCW15



Multiplay Curved Roof
Product codes below

Deck Heights:

600mm	MPCR
900mm	MPCR
1200mm	MPCR
1500mm	MPCR



Multiplay Duel Bar Slide
Product codes below

Deck Heights:

600mm	N/A
900mm	MPDB9
1200mm	MPDB12
1500mm	MPDB15



Multiplay Firemans Pole
Product codes below

Deck Heights:

600mm	MPFP6
900mm	MPFP9
1200mm	MPFP12
1500mm	MPFP15



Multiplay Infill Panel
Product codes below

Deck Heights:

600mm	MPIP
900mm	MPIP
1200mm	MPIP
1500mm	MPIP



Multiplay Ladder Bridge
Product codes below

Deck Heights:

600mm	MPLB
900mm	MPLB
1200mm	MPLB
1500mm	MPLB



Multiplay Link Ladder Bridge
Product codes below

Deck Heights:

600mm	MPLLB
900mm	MPLLB
1200mm	MPLLB
1500mm	MPLLB



Multiplay Monkey Bars Bridge
Product codes below

Deck Heights:

600mm	MPMB
900mm	MPMB
1200mm	MPMB
1500mm	MPMB



Multiplay Moulded Slide
Product codes below

Deck Heights:

600mm	MPMS6
900mm	MPMS9
1200mm	MPMS12
1500mm	MPMS15





Multiplay Net Bridge
Product codes below

Deck Heights:

600mm	MPNB
900mm	MPNB
1200mm	MPNB
1500mm	MPNB



Scramble Net
Product codes below

Deck Heights:

600mm	N/A
900mm	MPSN9
1200mm	MPSN12
1500mm	MPSN15



Multiplay Sloping Link Ladder
Product codes below

Deck Heights:

600mm	N/A
900mm	N/A
1200mm	MPSLL12
1500mm	MPSLL15



Multiplay Platform Deck & Posts
Product codes below

Deck Heights:

600mm	MPSP6
900mm	MPSP9
1200mm	MPSP12
1500mm	MPSP15



Multiplay Stainless Steel Slide
Product codes below

Deck Heights:

600mm	MPSS6
900mm	MPSS9
1200mm	MPSS12
1500mm	MPSS15



Multiplay Stairs
Product codes below

Deck Heights:

600mm	MPS6
900mm	MPS9
1200mm	MPS12
1500mm	MPS15



Multiplay Tunnel Bridge
Product codes below

Deck Heights:

600mm	MPTB
900mm	MPTB
1200mm	MPTB
1500mm	MPTB



Multiplay Tunnel Underpass
Product codes below

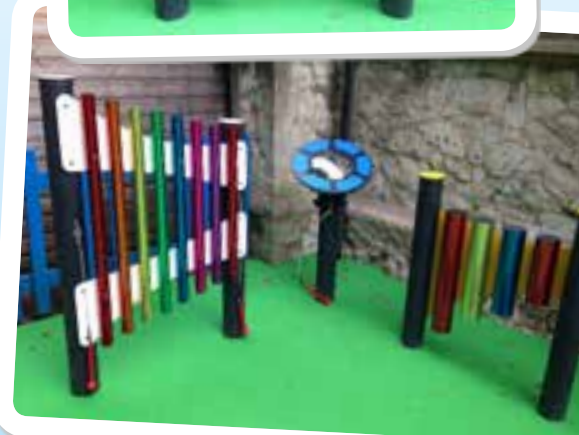
Deck Heights:

600mm	MPTU
900mm	MPTU
1200mm	MPTU
1500mm	MPTU



Imaginative Play

Play is a vital part of a child's development and stimulating their minds is of paramount importance. Helping them to use and explore their imagination through play will encourage skills such as sharing, communication and support their creative and physical development.



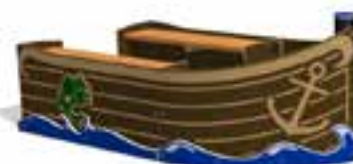
Imaginative Play Equipment

Our imaginative products help boost children's ability to think freely and understand the world. Imaginative play helps children process, understand and interpret stories, real events and new experiences. The Imaginative and Creative range includes castles, trains, storytelling chairs and play huts.



Timber Pirate Ship
TBSHIP

Dimensions (LxWxH):
7303mm x 2180mm x 5190mm
Free Fall Height: 1.0m



Mini Pirate Ship
FIFSHIP

Dimensions (LxWxH):
2400mm x 1200mm x 600mm
Free Fall Height: <0.6m



Fishing Trawler
FIFBOAT

Dimensions (LxWxH):
3434mm x 1815mm x 1265mm
Free Fall Height: <0.6m



Pirate Ship
FIFSHIP

Dimensions (LxWxH):
3434mm x 1810mm x 1245mm
Free Fall Height: <0.6m

Driftwood Hut
FIDHUT



Wendy Hut
FIWHUT

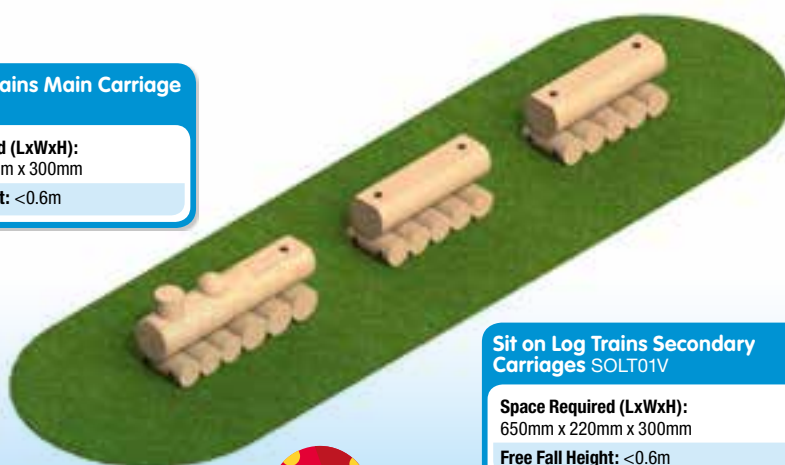


Play Den
FIPDEN

Dimensions (LxWxH):
1544mm x 1300mm x 1505mm
Free Fall Height: <0.6m

Sit on Log Trains Main Carriage
SOLT01V

Space Required (LxWxH):
890mm x 335mm x 300mm
Free Fall Height: <0.6m



Sit on Log Trains Secondary Carriages
SOLT01V

Space Required (LxWxH):
650mm x 220mm x 300mm
Free Fall Height: <0.6m





**Train Station
Panel FISTAT**

**Train Ticket Office Panel
FITICK**

Space Required (LxWxH):
1200mm x 180mm x 900mm
Free Fall Height: <0.6m



**Toddler Shelter
TSHELT**

Space Required (LxWxH):
1896mm x 1340mm x 2118mm
Free Fall Height: <0.6m



**Theatre Area
THEAR**

Space Required (LxWxH):
6300mm x 3840mm x 1750mm
Free Fall Height: <0.6m



**Storytelling Area
STAREA**

Space Required (LxWxH):
3000mm x 2500mm x 1400mm
Free Fall Height: <0.6m



**Staged Seating Area
SSAREA**

Space Required (LxWxH):
6300mm x 3840mm x 1750mm
Free Fall Height: <0.6m



**Early Years Locomotive
EYLOCO**

Space Required (LxWxH):
980mm x 500mm x 673mm
Free Fall Height: <0.6m



**Early Years Carriage
EYCARR**

Space Required (LxWxH):
740mm x 490mm x 455mm
Free Fall Height: <0.6m



**Steam Express Locomotive
SELOCO**

Space Required (LxWxH):
2360mm x 1250mm x 1243mm
Free Fall Height: <0.6m

**Steam Express Carriage
SECARR**

Space Required (LxWxH):
1100mm x 770mm x 750mm
Free Fall Height: <0.6m



**Steam Locomotive
SETSE**

Dimensions (LxWxH):
1500mm x 600mm x 250mm
Free Fall Height: <0.6m



**Passenger Carriage
SETSC**

Dimensions (LxWxH):
1500mm x 600mm x 250mm
Free Fall Height: <0.6m



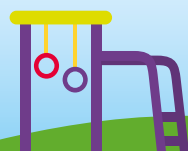
**Log Carriage
SETEG**

Dimensions (LxWxH):
1500mm x 600mm x 250mm
Free Fall Height: <0.6m



**Steam Engine Train Set
STMTS**

Dimensions (LxWxH):
5000mm x 600mm x 250mm
Free Fall Height: <0.6m



Wall Panels



Our wall panels are a great way to brighten up any wall of your school, they are easy to install on either exterior or interior walls with all fixings and instructions supplied. All our wall panels are designed to develop a children visual recognition, role play, alphabetical and numerical skills. All panels are 800mm x 595mm unless otherwise stated. See our website for the full range.



Magnetic Snakes & Ladders
MWGNAK

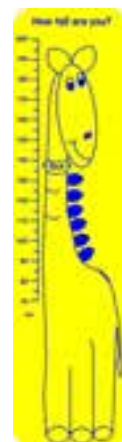


Magnetic Plain Panel c/w 100 Numbers MWGPLAI/N



How tall are you? Dragon
WAPDRAGON

Dimensions (HxW):
2400mm x 600mm



Dino Height Chart
WAPDINO

Dimensions (HxW):
2400mm x 600mm



Magnetic Chess
MWGCHES



Phonics Tree
WAPPHT



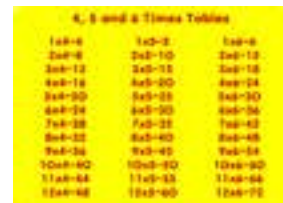
Last Letter Sounds
WAPLLS



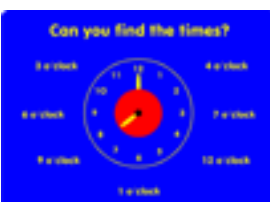
Alphabet Writing
WAPALPW



Chalk Station
WAPACCHALK



4, 5 & 6 Times Table
WAPTIMESB



Can you find the Time?
WAPCANU



Beach Maze
WAPBM



Tile Slide Frog
WAPTSEF



Wall Target 0.8m dia
WGTARG08

Dimensions (Diameter):
800mm

Activity Play Panels

Our activity play panels are fun, bright and easy to install. They are appealing to a variety of age ranges and with over 40 designs including arts & crafts, scientific, and educational they are a great way for children to learn new skills. Activity panels come with timber posts and fixings. All panels are 800mm x 595mm unless otherwise stated. See our website for the full range.



Alphabet Writing
APALPW



Chalk Station
APACCHALK



Paint Station
APACPAINT



Weaving Fun
APWEAV



Dimensions (HxW): 800x1200mm

Scientific Weather
APSCW



Dimensions (HxW): 800x1200mm

Scientific Colours
APSCC



Dimensions (HxW): 800x1200mm

Scientific Pulleys
APSCP



Dimensions (HxW): 800x1200mm

Scientific Gears
APSCG



Today's Weather is...
APWEATHER



What's the Weather Like?
APWWEATH



Number MAZE
APNUMBM



Water Cycle
APWATERC



Village Shop
APVILLS



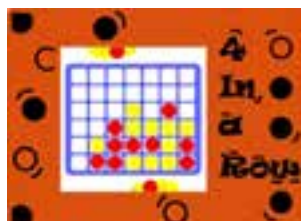
Crazy MAZE
APMAZE2



Aeroplane
APPLANE



Ice Cream Shop
APICEC



Magnetic 4 in a Row
MAP4INA



Magnetic Chess
MAPCHES



Magnetic Ludo c/w dice
MAPLUDO



Magnetic Snakes & Ladders
c/w Dice MWGSNAK



Underwater Sub with Mirrored Dome
APSUB



Space Man with Mirrored Dome
APSPACEM



Space Ship with Mirrored Dome
APSPACES



Bug Eyes Cricket
APCRICK



Tic Tac Toe
APTTT



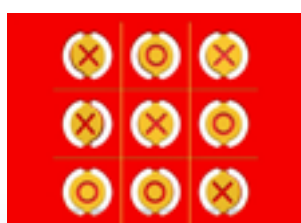
Phonics Tree
APPHT



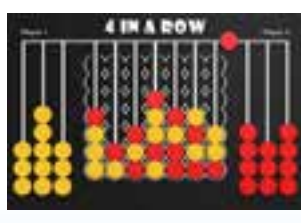
Sunflower Sums
APSS



Who Pairs Wins
APWDWIN



Flip OXO's
APFOXO



Dimensions (HxW): 800x1200mm

4 in a Row
AP4INA



Pinball
APPINB

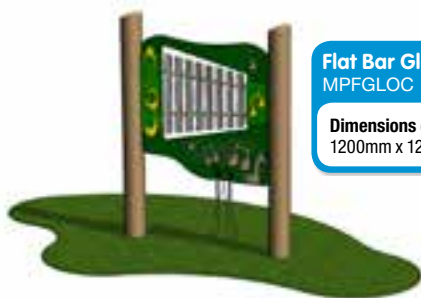


5 a Day Fitness
AP5ADAY

Musical Instruments



Our outdoor musical instruments combine two things that children love, music and the outdoors. All musical experiences lead to learning including sensory development and promoting self expression. Most importantly through music children are better able to develop and sustain their imaginations and unbashed creativity.



Flat Bar Glockenspiel
MPFGLOC

Dimensions (LxHxW):
1200mm x 1200mm x 125mm

Bongos
MPBON

Dimensions (LxHxW):
1200mm x 1200mm x 125mm



Flat Bar Glockenspiel
MPCGLOC

Dimensions (LxHxW):
1200mm x 1200mm x 125mm



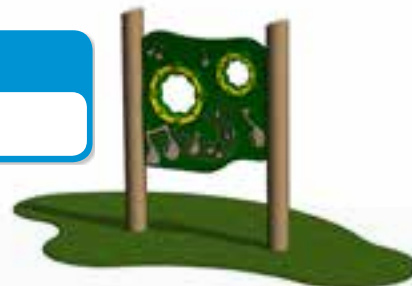
Hardwood Xylophone
MPHXL

Dimensions (LxHxW):
1200mm x 1200mm x 125mm



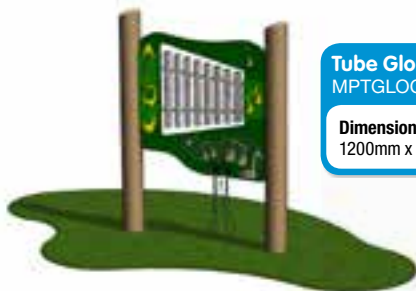
Shakers Panel
MPSHAK

Dimensions (LxHxW):
1200mm x 1200mm x 125mm



Tube Glockenspiel
MPTGLOC

Dimensions (LxHxW):
1200mm x 1200mm x 125mm



Outdoor Musical Panels
Full Set MPSET

Dimensions (LxHxW):
1200mm x 1200mm x 125mm





Eco-Tongue Drum
MPCOTD

Dimensions (LxHxW):
400 x 1020mm x 460mm



Eco-Chime Quartet
MPCOCQ

Dimensions (LxHxW):
270 x 1403mm x 270mm



Eco-Bongos
MPCOBO

Dimensions (LxHxW):
920 x 1003mm x 120mm



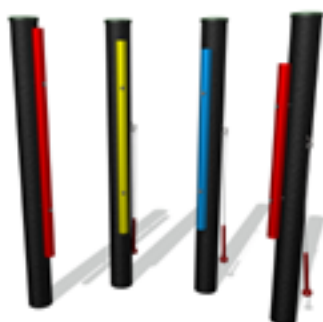
Eco-Chimes
MPCOCH

Dimensions (LxHxW):
870 x 1407mm x 198mm



Eco-Rain Wheel
MPCORW

Dimensions (LxHxW):
600 x 1032mm x 460mm



Eco-Multi Chimes (4 Piece Set)
MPCOMC4

Dimensions (LxHxW):
1600 x 1403mm x 800mm



Eco-Multi Chimes (8 Piece Set)
MPCOMC8

Dimensions (LxHxW):
3000 x 1403mm x 1500mm

Sand & Water Play

Children love playing with sand pits and water so we have created the Sand and Water Basin which is a freestanding sand and water table unit with its own suitable lid. The River Run water game will give children hours of fun learning about water and the way it flows.

The Water Cycle Play Panel is a bright, colourful and informative panel that guides children through the water cycle. The panel is supplied with either timber or recycled plastic posts for installation.

Our timber framed sandpit, with sliding lids, can occupy up to ten children, as well as transforming into a performance stage, once closed. As a variation to the standard sandpit we also have a sandpit with side cranes and chute.

The products are supplied fully assembled and can be left freestanding in the playground, however if you do wish to fix the unit down, ground anchors are available at extra cost.



Sand Basin
SBA01

Dimensions (LxHxW):
1200mm x 640mm x 920mm



Water Basin
WBA01

Dimensions (LxHxW):
1200mm x 640mm x 920mm



Water Cycle Play Panel
APWACY

Dimensions (LxHxW):
1200mm x 1200mm x 125mm



River Run
RR01

Dimensions (LxHxW):
2344mm x 586mm x 752mm



Sandpit with Sliding Lid
SANDP

Dimensions (LxHxW):
2710mm x 270mm x 1490mm



Sandpit with Sandcranes and Chute
SPCC01

Dimensions (LxHxW):
3000mm x 1850mm x 1500mm



Outdoor Furniture

Playground seating offers children a safe place to socialise, interact and learn - creating a separate environment from lively play areas. Our comprehensive range includes tables and seated furniture made from either colourful or plain materials, some also incorporate games and activities or even plants into their design to make them interesting and fun.



Junior Picnic & Activity Tables

Our Junior Picnic tables are ideal for children's quiet or social areas and are made from a material we call Greenwood. Greenwood is an Eco Friendly material made from 100% recycled polythene. Greenwood is used as an alternative to traditional materials such as wood, metal and concrete, diverting valuable waste from landfill.



Our JUNIOR Activity Tables are a unique innovation for children of all ages. These Activity tables are ideal for creating a social environment where children can interact and develop skills while having fun. We have over 12 designs available and each of our JUNIOR Activity Tables includes games pieces.



Junior A Frame Picnic Table

Product codes below

Colours:

Black	GWAFJ
Black & Brown	GWAFJBR
Black & Dark Green	GWAFJDG
Black & Grey	GWAFJGR
Black & Yellow	GWAFJY
Black & Green	GWAFJG
Black & Blue	GWAFJB
Black & Red	GWAFJR



Snakes & Ladders



Chess / Draughts



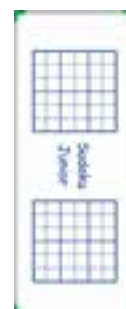
Playtown



Football



Mazes



Sudoku



Snakes & Maze Mixed



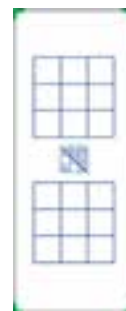
Snakes & Chess Mixed



Ludo & 4 in a Row



Write-on Dry Wipe



Noughts & Crosses



Table Title



Table Title



Table Title



Table Title

Junior Activity Tables (all tables have the options of black or black with any colour seats)

Product codes below

Activity Table:	Black:	Black + Coloured Seats:	Activity Table:	Black:	Black + Coloured Seats:
Snakes & Ladders	GBJSNAK	GBJSNAKC	Snakes + Chess	GBJMD2	GBJMD2C
Chess	GBJCHES	GBJCHESC	Ludo + 4 in a Row	GBJMD3	GBJMD3C
Draughts	GBJDRAU	GBJDRAUC	Write-on Dry Wipe	GBJDRC	GBJDRC
Playtown	GBJPLAY	GBJPLAYC	Noughts & Crosses	GBJNOUG	GBJNOUGC
Football	GBJFOOT	GBJFOOTC	Super Slot Racers	GBJRACER	GBJRACERC
Mazes	GBJMAZE	GBJMAZEC	Track and Field	GBJTACK	GBJTACKC
Sudoku	GBJSUDO	GBJSUDOC	Our Solar System	GBJSOLAR	GBJSOLARC
Snakes + Maze	GBJMD1	GBJMD1C	World Map Quiz	GBJWORLD	GBJWORLD

Playtime Furniture



Clarendon Table

The Clarendon Picnic Table will comfortably seats around 6 - 9 people. It combines high quality; decorative black recycled support frames with a choice of colourful, hygienic, safe and recyclable table and seat tops. These tables are supplied flat packed with simple instructions and stainless steel fittings. All Clarendon tables are 1970mm x 595mm (diameter x height) unless otherwise stated.

Clarendon Table

Product codes below

Colours:	
Black	GWCLBLK
Red	GWCLRED
Yellow	GWCLYELL
Blue	GWCLBLU
Orange	GWCLORG
Green	GWCLGRN
Violet	GWCLVIO



Secrets Bench
GWSECRET

Dimensions (LxHxW):
1800mm x 720mm x 860mm

Secrets Bench

The Secrets Bench is not just a functional and comfortable seat, but a bright, colourful and fun feature in any playground. Combining a high quality recycled plastic bench seat with a stainless steel talk tube connecting a speaker/listening point at either end of the bench.



Composite Benches

The Leverstock range of outdoor furniture has a variety of coloured seat planks which offer at least 36 different colour options and combinations to choose from. With the use of durable recycled plastic frames and coloured plastic planks, they are virtually maintenance free and will not rot, crack or splinter. Manufactured to high standards they are available in either backed or backless bench options. This easy to assemble product is supplied flat packed with stainless steel fittings and can be assembled using standard hand tools.



Leverstock Bench 1200mm
GWLEV12

Dimensions (LxHxW):
1200mm x 860mm x 720mm



Leverstock Bench 1800mm
GWLEV18

Dimensions (LxHxW):
1800mm x 860mm x 720mm

Leverstock Backless Bench 1200mm
GWBBLEV12

Dimensions (LxHxW):
1200mm x 415mm x 310mm

Leverstock Backless Bench 1800mm
GWBBLEV18

Dimensions (LxHxW):
1800mm x 415mm x 310mm



Animal End Graphics
End Panel ANMALB



Animal End Graphics
End Panel ANIMLESS

Frimley Picnic & Activity Tables

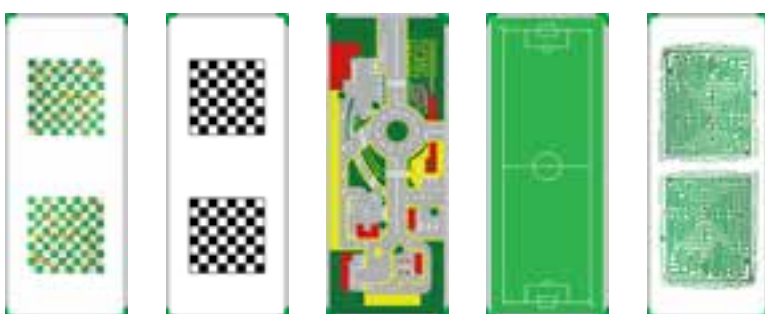


Our Frimley Picnic Table is made from pressure treated redwood timber. The table is built to last, made from FSC timber and carries a 10 year guarantee! An ideal table for your park, garden or play area. The Picnic table is supplied flat packed and assembly instructions are included with the picnic table.

Our Junior Activity Tables are a unique innovation for children of all ages. These Activity Tables are ideal for creating a social environment where children can interact and develop skills while having fun. We have over 12 designs available and each of our Frimley Activity Tables includes games pieces. The activity table is supplied flat packed and assembly instructions are included with the picnic table.



Frimley Picnic Table FRMPNT



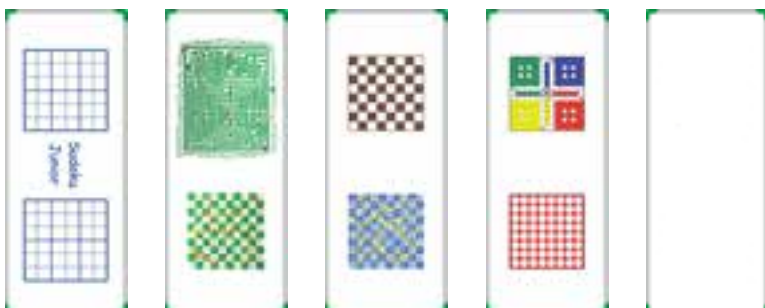
Snakes & Ladders

Chess / Draughts

Playtown

Football

Mazes



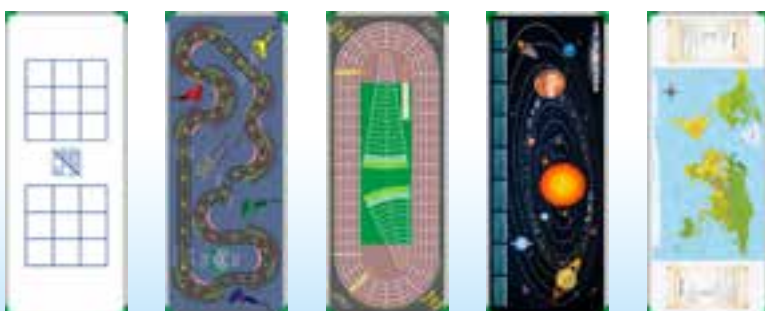
Sudoku

Snakes & Maze Mixed

Snakes & Chess Mixed

Ludo & 4 in a Row

Write-on Dry Wipe



Noughts & Crosses

Table Title

Table Title

Table Title

Table Title



Frimley Activity Tables

Product codes below

Activity Table: Snakes & Ladders	FRMSNAK	Activity Table: Snakes + Chess	FRMMD2
Chess	FRMCHESS	Ludo + 4 in a Row	FRMMD3
Draughts	FRMDRAU	Write-on Dry Wipe	FRMDRY
Playtown	FRMPLAY	Noughts & Crosses	FRMNOUG
Football	FRMFOOT	Super Slot Racers	FRMRACER
Mazes	FRMMAZE	Track and Field	FRMTRACK
Sudoku	FRMSUDO	Our Solar System	FRMSOLAR
Snakes + Maze	FRMMD1	Table Title	FRMWORLD



Story Teller Areas

Children love stories! Sharing stories is an essential part of a child's development in school and the outdoor classroom range provides endless opportunities to do just that!

The chair can also be used for creating an outdoor teaching area, we offer benches and stools enabling you to create the perfect teaching environment. With our chair we offer a bespoke service so you can have any design on the back of your chair at no extra cost.

Our colourful Toadstool Seats are ideal for brightening up any play area. Available in Timber or 100% recycled stems and HDPE plastic tops. The Toadstool HDPE plastic tops are available in four colours, Red, Blue, Green, Orange and Violet.



The Storyteller Chair
STCH01

Dimensions (HxWxD):
1500mm x 690mm x 590mm



Sleeper Bench
SB14

Dimensions (HxWxD):
1400mm x 195mm x 420mm



Sleeper Bench
SB24

Dimensions (HxWxD):
2400mm x 195mm x 420mm



Sleeper Bench
SB36

Dimensions (HxWxD):
3600mm x 195mm x 420mm



Toadstool Seating
TOAD01



Simple Bench Seats

Machine round and half log seating. If you need plenty of cost effective seating then Simple Benches are for you. All simple benches come with our 15 year 1st grade machine round guarantee.



Simple Bench 1.2m
SBS12

Dimensions (HxWxD):
1200mm x 195mm x 420mm

Simple Bench 2.4m
SBS24

Dimensions (HxWxD):
2400mm x 195mm x 420mm

Simple Bench 3.6m
SBS36

Dimensions (HxWxD):
3600mm x 195mm x 420mm

Planter Boxes

Planter seating unit offers durability and weather-resistance ideal for quiet or social areas and is made from a material we call Greenwood. Greenwood is an Eco Friendly material made from 100% recycled polythene. Greenwood is used as an alternative to traditional materials such as wood, metal and concrete, diverting valuable waste from landfill.



Greenwood Planter Small
GWPS

Dimensions (HxWxD):
600mm x 600mm x 320mm



Greenwood Planter Medium
GWPM

Dimensions (HxWxD):
600mm x 600mm x 455mm



Timber Planters
LPANT

Dimensions (HxWxD):
1000mm x 1000mm x 550mm



Greenwood Planter Large
GWPL

Dimensions (HxWxD):
600mm x 600mm x 600mm

Thermoplastic Markings

Our playground markings are an excellent way to brighten up tarmac areas; they also improve on site facilities and provide useful curriculum resources for your teachers.

We have found the creation of more focused areas with stimulating games and activities can encourage better social interaction between different age and gender groups as well as promote cooperative play.

Thermoplastic markings are ideal for: promoting vivid colour for solid graphics, school logo's and educational games.

All our markings are hard wearing and also come with a minimum 3 year guarantee.



Painted Markings



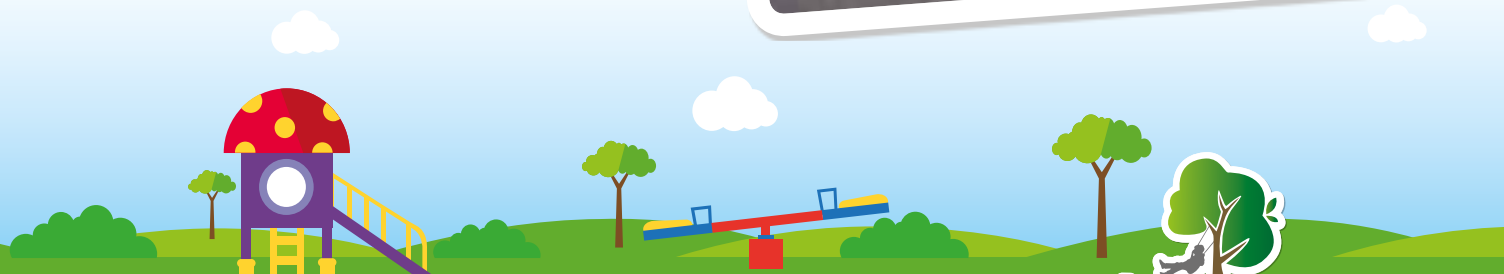
Our playground markings are an excellent way to brighten up tarmac areas; they also improve on site facilities and provide useful curriculum resources for your teachers.

We have found the creation of more focused areas with stimulating games and activities can encourage better social interaction between different age and gender groups as well as promote cooperative play.

Traditional painted markings are ideal for:

Tennis courts, multi use games areas, re-marking existing graphics, a cost effective option for all graphics.

All our markings are hard wearing and also come with a minimum 3 year guarantee.



Fencing

Installing adequate playground fences is an essential safety requirement that every outdoor play should have.

We offer a variety of solutions in timber and steel for school playgrounds and play areas where security, safety, durability and sustainability are key considerations. All our playground fencing and playground gates are BS EN 1176-1 and RoSPA compliant.

Talk to our in-house experts for advice on the best style to suit your requirements



Surfacing

Wetpour

Playscene wetpour is designed for maximum safety performance and durability whilst still encouraging play.

Our wetpour surface is a rubberised surfacing solution that is bonded together to create a safe and fun environment. Not only is it available in a range of colours but you can have almost any detailed design incorporated to suit your needs. Our wetpour surface can be laid onto existing tarmac, concrete surfaces or prepared bases.

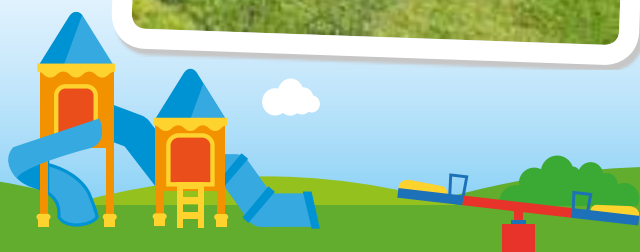
Playscene wetpour comes with a 5 year guarantee.



Grass Lock Matting

Playscene grass lock matting is a cost effective solution to providing safer surfacing around play equipment.

The open textured matting is made out of high quality recycled rubber which is ideal for both high and low level equipment achieving critical fall heights of up to 3 metres on grass. Once grass lock matting is installed the grass will need to be maintained as usual, the grass can be cut with a conventional mower. Grass lock matting also reduces ground erosion enabling extended use of grass areas.



Rubber Bonded Mulch

Playscene rubber bonded mulch for playgrounds is a natural looking play surface often described as rubber bark.

Our rubber bonded mulch is a durable and environmentally friendly safety surface containing 90% recycled rubber that enhances the green credentials and reduces the carbon footprint of any project.

The resin bonded rubber bark requires minimal groundwork preparation and can be installed directly onto grass or existing hard standing surfaces such as tarmac. It also provides the ideal solution to tricky tree roots where excavation is a problem.

Our play area rubber mulch is fully porous and maintenance free, no costly topping up of material or regular raking required.



Artificial Grass

Playscene Artificial Grass has all the visual benefits of real grass, it is soft to the touch and comfortable for all types of play.

It doesn't require expensive maintenance or care and can be used throughout the whole year. There's no mowing, feeding or watering required. This grass retains its safety properties in all conditions, there's no mud in the wet weather and no hard, bare earth during the summer months.



Play Bark

Our play bark is made from seasoned recycled softwood fibres that knit together to form a stable, durable surface providing excellent absorption against impact, whilst retaining a natural look and feel.



Maintenance & Refurbishment

Playscene offer a unique service, breathing life into tired old play equipment and improving the longevity of your outdoor equipment for a number of years to come.

We understand budgets are becoming ever tighter and with this in mind we have created a bespoke service to rejuvenate your existing play area.

We offer but are not limited to:

- ✓ Replacing Ropes ✓ Surfacing Repair ✓ Replacement panels
- ✓ Repainting/ Remarketing ✓ Replacement parts for furniture



All work that is carried out will be under guarantee. With our vast experience in the playground industry we can replace or refurbish all play equipment no matter who the original supplier.

We offer this service to anyone that has a play area including schools, councils, parish's, public houses, churches, nurseries and residential.



Guarantees

Playscene give guarantees which exclude normal wear and tear, accidental damage and the results of vandalism and have the proven ability to honour them. Please contact the office for further information. In addition all our installations come with a 12 month warranty.



Playscene give guarantees which exclude normal wear and tear, accidental damage and the results of vandalism and have the proven ability to honour them. Please contact the office for further information. In addition all our installations come with a 12 month warranty.



25-year Steel guarantee for all Hot Dip Galvanised Steelwork against perforation or structural failure caused by corrosion, materials or workmanship.



10-year Plastic guarantee for all Denstec high density polyethylene panels and components against cracking, splitting and delaminating caused by materials or workmanship defects.



5-year Paint guarantee for all Metal Equipment treated with a zinc metal thermal spray or galvanized and coated in polyester powder paint against corrosion.



5-year Artificial Grass guarantee against deterioration that would adversely influence the suitable and safe playing features when used as an Outdoor Multi Sports surface.



5-year Wet Pour guarantee against defects due to faulty materials and workmanship in the manufacture and installation of the surfacing. Please refer to Wet Pour Guarantee for full conditions.



12-month guarantee against failure for all consumables such as ropes, springs, roundabout bearings and swing chains.

Materials

Choosing the appropriate materials for the job is a crucial ingredient in ensuring our award winning products continue to set the standard. Contact our office for the full specification on any of our products shown.

T: 01252 641740

E: info@play-scene.co.uk

Manufacturing

By blending the latest technology with good, old-fashioned carpentry skills, our products remain high-quality, state-of-the-art and innovative.

Fixings

Although a small part of the apparatus, fixings play a crucial role in the longevity and safety of the equipment. The robust quality control we practice ensures only the finest materials and most durable mechanisms are incorporated into our products.

Terms & Conditions

1. THE CONTENT OF THIS CONTRACT

a. In this contract: -

"The Company" means Playscene.

"The Goods" means the goods or services sold or supplied by the Company to the Customer under this contract.

"This Contract" means a contract between the Customer and the Company incorporating these Conditions.

- b. This Contract governs the sale of Goods by the Company to the exclusion of all other representations, statements, understandings, negotiations, proposals or agreements.
- c. Where the Customer submits its own order form these terms shall prevail if they conflict with the terms in that form, even if that form includes a condition similar to this one.
- d. No employee of the Company or its agents has authority to make any warranty, statement or promise concerning the Goods except in writing signed by a Director of the Company.
- e. The Customer's order shall be subject to acceptance by the Company.
- f. Orders are accepted and estimates of delivery given conditionally on the Company being able to secure the necessary labour or material and without responsibility for delays or non-fulfilment arising through risk and uncertainties of manufacture, strikes, accidents, force majeure or otherwise howsoever caused.
- g. All drawings, descriptive and forwarding specifications, particulars of weights and dimensions are approximate only and not binding and illustrations contained in catalogues, price lists, sales literature and other advertisement material are for the purpose of general description only and none of these shall form part of this Contract.

2. STANDARDS

Where the Company is asked to manufacture or supply Goods to the Customer's own specification, the Company will not be held responsible for any non-compliance to the relative standards for those Goods and is not responsible for the actual suitability of those goods for the purpose being used.

3. PRICES

- a. We reserve the right to invoice at the price ruling at date of despatch. All prices, unless otherwise stated, are for delivery "ex works" and are exclusive of value added tax or any other tax or duty which is or may be levied or charged in the U.K or in the country of destination. Any such taxes, duties or charges shall be paid by the Customer.
- b. The prices quoted are subject to any increase in the cost of labour or material between the date of quotation and despatch of Goods from our works and may not include installation costs.
- c. If the Customer requires any alteration to the order, the price will be varied accordingly.

4. PROPERTY OF GOODS

- a. Property of Goods delivered by the company shall not pass to the Customer until payment is made in full. In case of default in payment the Company shall be granted access rights in order to repossess the Goods. At all times before payment in full:
 - the Goods shall stand in the Customer's books in the name of the Company; and
 - the Customer shall take appropriate steps to notify third parties of the Company's interest in the Goods; and
 - in the event of threatened seizure of the Goods or of appointment of a receiver or liquidator, or any other event entitling the Company to terminate this Contract under paragraph 9, the Customer shall immediately notify the Company and the Company shall be entitled to enter the Customer's premises and repossess the Goods.
- b. If the Customer delivers goods to a third party before payment has been made in full to the Company, the Customer shall hold all sums received for such Goods as trustee for the Company and shall remit them to the Company on receipt.
- c. Risk in the Goods shall pass on delivery.

5. DELIVERY

- a. Delivery shall be "ex-works" unless the Company agrees otherwise. If the contract includes delivery by the Company, the Customer shall be responsible for giving the Company clear and accurate instructions as to the place of delivery.
- b. Time shall not be of the essence in respect of delivery. If the Goods are to be delivered by a date specified by the customer or by the Company such date is to be treated as an estimate only. The Company does not guarantee that the Goods will be delivered by such date or accept liability for failure to meet the date.

6. SETTLEMENT TERMS

- a. Where credit facilities exist, accounts are due for payment 30 days from the date of invoice. Where special discount terms are quoted, the terms must be strictly adhered to otherwise the account will be charged net. The customer shall, unless otherwise agreed in writing, pay all sums due to the company under the Contract prior to delivery in cash or cleared cheque in pounds sterling. If for any reason the Company does not receive unconditional payment in full, whether under any terms of credit facilities or otherwise, within 30 days from delivery then the Company may charge daily interest on such payments at a rate equal to 5% per annum above the Base Lending rate of Barclays Bank plc, such interest to run from day to day to accrue before as well as after any judgement.
- b. The Company has the right to refuse a credit account for any Customer it sees as a potential risk.

7. DELIVERIES

- a. The Company does not accept responsibility for any damage, shortage or loss in transit unless:
 - i. Non-receipt of Goods is advised to the company within 3 days from the date of the Company's advice/delivery note; and
 - ii. Any breakage, damage or shortage is advised to the Company and carriers within 3 days of receipt of Goods provided that the carrier's note is marked "unexamined".

- b. All sizes are approximate. Variations during the course of manufacture cannot be avoided and liability is not accepted for them.
- c. When Goods are offered and supplied to a Customer's designs and specifications no guarantee is given or implied of their suitability for the purpose for which they are used.
- d. If during the period of twelve months from the date of invoice the Company is notified of a fault in the Goods which is due to faulty design, manufacturing or materials, the Company will replace or (at its option) repair the faulty part free of charge on an ex-works basis provided that:
 - the Goods have been properly kept, used and maintained in strict accordance with the manufacturers or the Company's instructions, if any, and have not been Modified.
 - the fault is not due to accidental or wilful damage, interference with or maintenance of the Goods by persons other than the Company or its duly appointed Agent.
 - if the Goods have been manufactured to the Customers design, the fault is not due to faulty design by the Customer
 - this guarantee does not cover fair wear and tear.
 - the Customer will be required to return faulty Goods to the Company for exchange or repair at the Customer's own cost, the Company will not be liable for any labour installation charges involved with the removal and subsequent re- installation of any such parts.

8. LIMITATIONS OF LIABILITY

- a. Except where expressly contained in this Contract, all warranties, conditions, undertakings and representations, expressed or implied, statutory or otherwise, are excluded and the Company has no obligation, duty or liability in Contract, tort (including negligence or breach of statutory duty) or otherwise.
- b. In any event, the Company's liability arising for any reason in connection with this Contract shall be limited to the original invoice value of the Goods.
- c. In no circumstances will the Company be liable in Contract, tort (including negligence or breach of statutory duty) or otherwise for loss (whether direct or indirect) of profits, business or anticipated savings, or for any indirect or consequential loss or damage whatever.
- d. The Company does not exclude or restrict liability for death or personal injury resulting from its own negligence.
- e. Each provision of this Condition is to be construed as a separate limitation applying and surviving even if for any reason one or other of the said provisions is held unreasonable in any circumstances and shall remain in force notwithstanding termination of this Contract.

9. CANCELLATION

The Company reserves the right to levy a cancellation charge of 20% of the order value in the event of the order being cancelled by the Customer. Please Note: Any such charge is non-negotiable and is solely at the discretion of the Company.

10. TERMINATION

The Company shall have the right forthwith to terminate this Contract and to claim for any resulting losses or expenses if:

- the Customer commits a breach of this contract and fails to remedy the breach within a reasonable time of a written notice to do so: or
- the customer commits any act of bankruptcy or compounds with its creditors; or a petition or receiving order in bankruptcy is presented or made against the Customer; or a petition for an administration order is presented (otherwise than for reconstruction or amalgamation) or a receiver of administrative receiver or any similar event occurs under the laws of the state where the Customer was incorporated.

11. FORCE MAJEURE

The Company shall not be liable in respect of any breach of this Contract due to any cause beyond its reasonable control including Act of God, inclement weather, flood, lightning or fire, industrial actions or lockouts; the act of omission of Government, highways authorities, or other competent authority, was, military operations or riot; the act of omission of any part for whom the Company is not responsible.

12. INFRINGEMENTS

- a. The Customer shall indemnify the Company against all damages, penalties, cost and expenses arising out of any claim by any third party for any infringement or alleged infringement of any third party's industrial or intellectual property rights in any work carried out in accordance with the Customer's specifications.
- b. Copyright in all drawings or tracings prepared by the company are the Company's property and copyright and must be regarded as confidential. Such drawings or tracings must not be published or disclosed under any circumstances without the Company's permission in writing.

13. APPLICABLE LAW

The Law of England shall be the proper law of Contract.

- No part of this brochure may be copied in any form or by any means without the express written permission of Playscene © Playscene 2015
- We have a policy of continuous product development and whilst we have taken every possible care to include completely accurate information in this brochure, we reserve the right to alter specifications if necessary, without prior notice.
- Due to the limitations of photography and the printing process used, the equipment colours illustrated in this brochure are a guide and should not be regarded as a true representation of the final colour.
- E&OE



