

QTAO 2.0

THE NEXT GENERATION IN METER CONNECTIVITY!

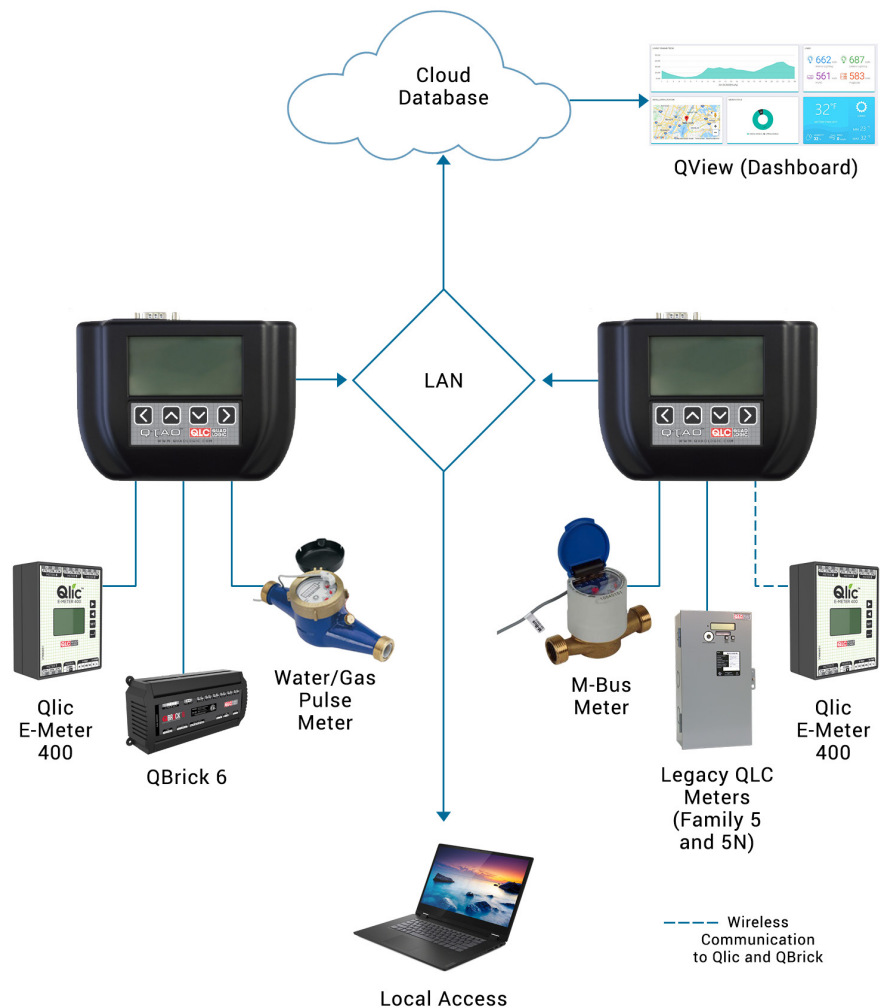


The QTAO is the next generation meter data hub that collects various types of building data, and pushes them to a cloud database. It is currently compatible with and able to read from the Quadlogic meters, and various utility meters.

The QTAO connects to meters using MODBUS RS485 link, Pulses, M-Bus, Radio, and pushes data to a database via hardwired ethernet connection.

BENEFITS:

- Robust data collection mechanism for reliable operation
- Intuitive LCD user interface for local setup, status display, and troubleshooting
- Auto Detect feature for plug and play setup
- Switchable local WiFi hotspot with QR codes for mobile device setup and troubleshooting
- Locally hosted web interface to download readings in CSV files, get event log files and manage devices
- Collects data from Modbus, Pulse and M-Bus meters



SPECIFICATIONS

COMMUNICATIONS

10/100 Ethernet connection for remote cloud database push

Local WiFi 802.11b/g/n hotspot with switch enable/disable

Optional Cell Gateway Modem

Communicates with up to 247 Qlic E-Meters or QBrick 6 via MODBUS RTU over RS485 interface*

Communicates with water/gas pulse meters using dry contact pulse

Communicates up to 30 M-Bus Loads

Wireless communication with Qlic or QBrick using 900MHz frequency

OPERATING RANGE

Input Voltage: 85 ~ 264 VAC

Temperature: -20°C to +60°C

Operating Power: 1 Watt (Depends on Feature set Requested)

DISPLAY

128 x 64 pixel backlit Liquid Crystal Display (LCD)
& 4 button keypad

MEMORY

4GB non-volatile flash memory

DIMENSIONS & SHIPPING WEIGHT**

Dimensions: 10.0" Height x 8.0" Width x 6.0" Depth

Shipping weight: 9 lbs

* It's based on theoretical limit of Modbus

** (Changes based on Configuration)

Note: Above specifications are subject to change without notice

ORDERING INFORMATION

| MODEL | DESCRIPTION | COMMUNICATION |
|-------------|---|------------------------------------|
| 73-QTAO-2.0 | Pushes data to a database via hardwired ethernet connection. Includes 15W Class II Power supply and isolated RS485. Additional modules included based on feature selection. | Modbus RS485 , Pulse, M-Bus, Radio |