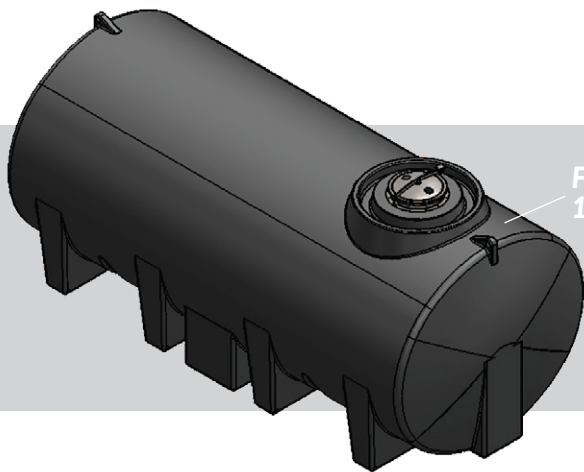




## Above Ground Storage Tanks - Horizontal



From 5,000 to  
13,000 Litres

### High volume liquid storage for potable water or waste

If you need to transport liquids or require additional liquid storage at your premises, these **Above Ground (Horizontal) Storage Tanks** are the ideal solution. Also available with WRAS-approval, featuring capacities from **5000 litres** to **13,000 litres** and the ability to link tanks together, you can create exactly the storage volume you require.

Applications will include emergency back-up drinking water supply, temporary water supply at festivals and/or the storage of toilet effluent until it can be disposed of at the treatment works.



#### WARNINGS

- Increased wall thickness as standard for liquids up to a specific gravity of 1.5 (e.g. effluent)
- Delivery on a 44 foot articulated lorry
- It is the customer's responsibility to offload
- A HIAB truck may be required
- Consider bunded tanks to avoid spillages

PLEASE CONSULT OUR LITERATURE ON  
CORRECT INSTALLATION OF TANKS

Options overleaf

### Technical Advantages

- Built-in lifting points
- Flat base for stability
- Pin mounting system for secure fixing
- Mount on flat surface without support
- Heavy weight material
- Inbuilt surge baffles

### Applications

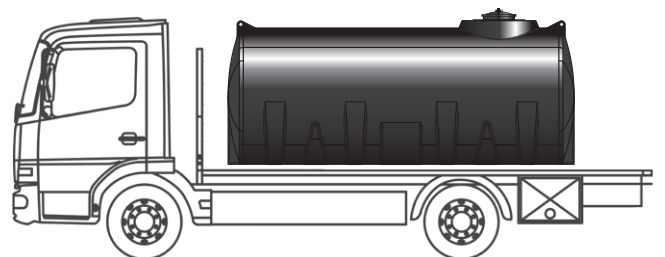
#### Liquid transport:

- Can be used for transport of liquids up to 1.5 SG (from water to liquid fertiliser to molasses)

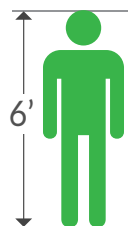
#### Static storage:

- Bulk storage for water/ waste (e.g. toilet, sink, shower and catering waste)
- Waste carriers' premises

For the transport of liquids, these horizontal tanks come fitted with inbuilt anti-surge baffles and pin mounting points to fasten to your vehicle.



(10,000 Litre Tank depicted)



Sizes are approximate



(10,000 Litre Tank depicted)

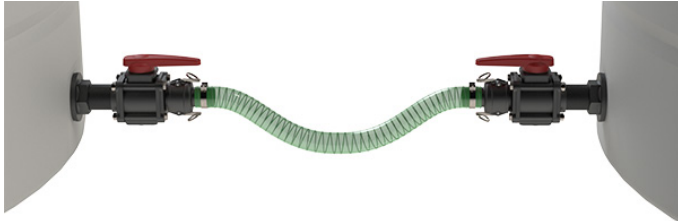


## Above Ground Storage Tanks - Horizontal



### Tank Linking Kits

Tank connection kits in a range of sizes



### Tank Connectors - Bulkhead Fittings

WRAS-approved tank fittings in a range of sizes



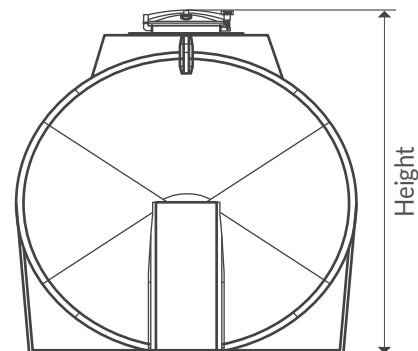
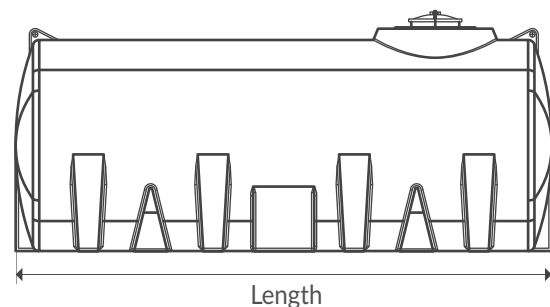
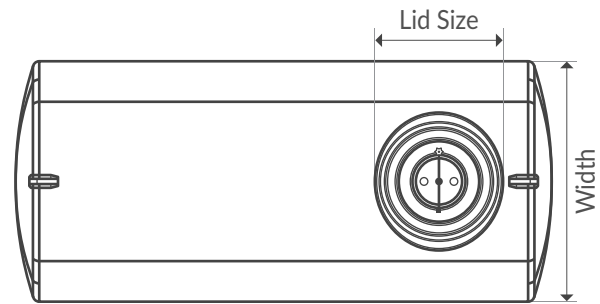
### Ball Valves

Ball valves for connecting to camlock and Bauer fittings



### Adaptors & Hose Couplers

Adaptors, hose couplers and fittings (camlock or Bauer)



### Tank Frames & Pump Plates

Tank support frame with pump mounting plate

 **Contact us for more information.**

### Technical Data\*

\*We reserve the right to amend the technical specification to improve the product without prior notification.

Volume (Litres)	Volume (Gallons)	Height (mm)	Diameter (mm)	Length (mm)	Weight (KGs)	Lifting Points	Lid Size (mm)	Baffles	WRAS Approved	Standard Outlet	Colour
5,000	1,101	1,690	1,700	2,500	250	2	620	Yes	Yes	2"	Black
10,000	2,203	1,800	1,900	4,200	550	2	620	Yes	Yes	2"	Black
13,000	2,863	2,200	1,900	4,200	690	2	620	Yes	Yes	2"	Black

**PRODUCT GUARANTEE: 10 YEARS SUBJECT TO NORMAL WEAR, TEAR & USAGE CONDITIONS**

**ONLY MOVE, LIFT OR STACK WHEN EMPTY**