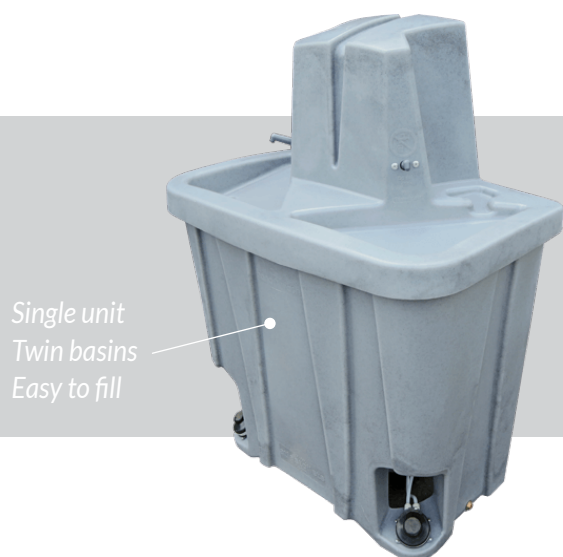




Hera 3 - Washstation



Single unit
Twin basins
Easy to fill

Free-standing 2-person sink - Off-grid hand-washing

A practical, two-person sink to provide hand-washing in off-grid situations and reduce queuing time at events. Foot-operated pumps for optimal hygiene. Complete lid lifts up for filling, emptying and/or sanitising of the internal fresh and grey water tanks. Easy access to tanks enables the use of liquid water steriliser to kill harmful bacteria, helping protect the user and the public from harm.



 **Contact us for more information.**

Features

- Twin internal tanks for fresh and grey water
- Fresh water capacity: 22 gallons / 100 litres
- Waste water capacity: 24 gallons / 110 litres
- Removable lid for filling, emptying and sanitising
- Integrated lifting handles
- Inbuilt strap groove for secure transport
- Stackable design for efficient storage and transport

Options

- Soap and paper towel dispensers

Applications

- Outdoor Events
- Campsites
- Festivals
- Retail & Business
- Zoos
- Allotments
- Fruit Picking



Technical Data*

Height:	1350mm
Width:	998mm
Depth:	575mm
Dry/Wet Weight:	35kgs / 145kgs
Fresh Water Capacity:	22 Gallons / 100 litres
Waste Water Capacity:	24 Gallons / 110 litres

NOTE: Do not move when full. Wet weight = ca. 145kgs.
Usage estimate: 200 - 400 visits.

*We reserve the right to amend the technical specification to improve the product without prior notification.