

An exhibition at the CLB –
Collaboratorium in the Aufbau Haus
at **Moritzplatz** Part of the CRC 1265
„Re-Figuration of Spaces“

Artistic collaboration & project
coordination Janin Walter

Research team

Ilkin Akpinar, Tae Woon Hur, Aaron
Lang, Gabriel Banks, Berit Hummel

MigraTouriSpace –

Migrating spaces and Tourism

An art and research project by Stefanie Bürkle

Press information: Berlin, 16/02/2021



Opening 21st April 6 pm - 9 pm

Dates 22nd April - 24th May 2021

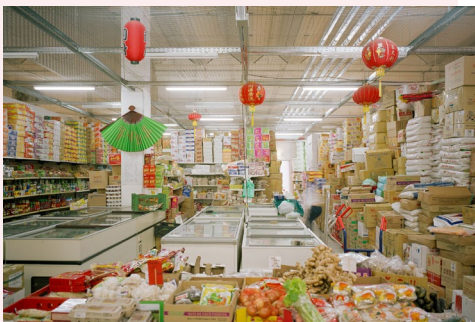
Opening times Tue-Fri 2 pm - 6 pm/

Sat-Sun 12 pm - 6 pm

MigraTourSpace is an artistic examination of travelling as an approach to the phenomena of migration and tourism. It's about the movement of images, people and spaces. Migrating spaces are spaces that roam with people when they migrate. Tourism no longer refers to vacation as an exceptional state, but to the tourist's gaze, which has been taken back home and has long since shaped what we call everyday life.

Stefanie Bürkle is an artist, urban researcher and professor of visual arts at the Institute of Architecture at the TU Berlin. The project is part of the Collaborative Research Centre SFB 1265 „Re-Figuration of Spaces“ at the TU Berlin.

The art and research project **MigraTourSpace** investigates the many ways in which tourism and migration overlap. 'Migration has a global course, similarly to tourism, and sometimes these two even come to determine one another', says **Stefanie Bürkle**. In fact: 'Transformations in urban space, whether influenced by or even brought about by migration, attract tourists.'



above: Dogil Maeul; below: Dong Xuan Center

Stefanie Bürkle travelled herself, and - with the assistance of her interdisciplinary team - gathered pictures, video material and interviews in Berlin and South Korea over the period of three years. The result of this work was a theme-picture-atlas of both places. The places chosen to act as case studies - the vietnamese wholesale market **Dong Xuan Center** in Berlin Lichtenberg, and the German village **Dogil Maeul** in South Korea - represent the tension between the migration of culturally coded spatial contexts and post-tourist practices. Both places have become tourist attractions: in this process new conflicts arise.

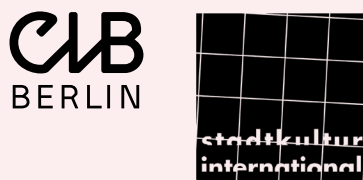
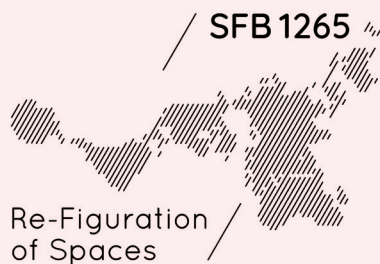
'It's like a permanent holiday', is Hans' laconic description of his twilight years with 'sea views' in South Korea. He and his Korean wife built themselves a detached family home with a red tiled roof and white plastered walls in Dogil Maeul (German village). They met in Germany, where she arrived in the 70's as a migrant guest worker, one of the many young Korean nurses who came from Korea. She had always dreamed of returning to her former homeland - he followed his wife and was prepared to grow old as a german retiree in a foreign place. But now they feel estranged both from their former homeland and from their new one.

'This **Dong Xuan Center** somehow brings a piece of Vietnam to Berlin,... You feel as if you were in your homeland. This is why I often come here with my family and with my friends. It's just that here you find things, such as food products, which you just don't get in normal shopping centres.'

Lion Nguyen, 16 years old

When Vietnamese people are feeling homesick or Berliners are feeling wanderlust for Asia, but also need to go shopping, go out to eat, visit the hairdresser or the nail salon, they go to the **Dong Xuan Center** in Lichtenberg.

The desire to create a new homeland for oneself becomes evident through the statements and the pictures collected. As Vilém Flusser remarks, **Migration**, as well as **re-migration**, is a painful but also a tremendously creative, productive situation, in which tension-filled cultural syntheses but also new forms of freedom emerge.



ARTPRESS
UTE WEINGARTEN

PRESS CONTACT

ARTPRESS-Ute Weingarten

Alexandra Saheb

Saheb.artpress@uteweingarten.de

Tel. +49-3048496350

THE EXHIBITION

By means of a multi-channel video installation, the visitors of the exhibition will dive into spaces of which they will no longer be able to determine the location. In Korea, Germany or Vietnam? Interviews with migrants and tourists offer insights into individual life stories and reveal the expectations and motifs of migrants' and tourists' movement. The exhibition visualises a self-changing concept of being-in-the-world, discusses conventional perceptions of tourism and migration and asks essential questions about one's own view on what is supposedly foreign.

In the context of the current pandemic, travelling is hardly possible any more. This is a further reason why **MigraTouriSpace** has come at precisely the right time. The floor to ceiling windows of the CLB are wholly covered with translucent photographs. In this way a playful dialogue emerges between inside and outside, between the supposedly known and the supposedly foreign right next to it. If you enter the exhibition space as a passer-by, you will yourself become a traveller, wandering through a video-landscape made of German houses in Korea and Vietnamese Berlin.

COMMUNICATION

A **communication programme** offers events to interested persons, that invite to an intensive discussion of the themes of migration, travelling and tourism.

CATALOGUE In connection with the exhibition, a book will be published, with photographs, texts and mappings.

GUIDED TOURS Every Sunday from 3 to 4 pm (German) and from 4 to 5 pm (English) project collaborators will take visitors on a guided tour of the exhibition.

ARTISTS' TALK Stefanie Bürkle and Svenja von Reichenbach, Director of the Palais Populaire, converse about *art and research*:

Wednesday, 28th April 7 pm - 8:30 pm

PANEL Different positions from art, culture and research confront one another to discuss the theme *"Travel of people and images"*:

Friday, 23rd April 7:30 pm - 9:30 pm Britta Schmitz (Senior curator (ret.), Nationalgalerie im Hamburger Bahnhof-Museum für Gegenwart in Berlin), Stefanie Bürkle (artist and professor of visual arts, TU Berlin), Martina Löw (Professor for Sociology of Architecture, TU Berlin and Spokesperson for the Collaborative Research Centre 1265 „Re-Figuration of Spaces“)

LIVE-STREAM As part of the conference „Video-Space-Methods“, the team will provide insights into artistic research methods directly from the exhibition space:

Friday, 30th April 2021 6 pm - 6:30 pm.

Further information about [the project can be found at:](#)

stefanie-buerkle.de, www.kunst.tu-berlin.de

Funded by the German Research Foundation
(DFG) – project number 290045248 – SFB 1265