

*American.*  
LOGISTICS ●

Transportation Management

## Powered by Tech, *Driven by People*



### Benefit / Demand Management



Driving a successful transportation benefit takes a combination of partners, technology, people and legacy knowledge. We deliver a first-class experience with real-time reporting for visibility.



### Operation Centers



These technology hubs powered with expert trained staff are something to see! Our operation centers are located nationwide delivering a backbone of facilitation while monitoring activity 24/7. Think command center for all your mobility activity.



### Safety Society



The American Logistics Safety Society is built around every aspect of our business. From HIPAA compliance of data, vetting our professional networks, or how we implement workflows and efficiencies, our safety stamp is a top priority.



### Transformative Technology



Our (SOC 2 Certified) technology platform exists to enable a safe, documented transportation management system for your organization. Access our network of vetted providers, scheduling, member verification, custom reporting, billing, real-time tracking, AI powered intelligence, and 24/7 monitoring so nothing is missed.

## 20 + Years of Mastering Mobility

American Logistics can seamlessly manage your non-emergency transportation benefit leveraging our proprietary technology platform, network of operation centers and quality provider networks. Our number one objective is to provide a **great experience** for your staff and members alike.

[americanlogistics.com](https://americanlogistics.com)

# American



# WORKFLOW DESIGNED FOR A BETTER EXPERIENCE

[HC] PLANS



- MEDICARE ADVANTAGE
- MEDICAID
- COMMERCIAL PLANS
- HOSPITALS & FACILITIES

1



RIDE PLEASE

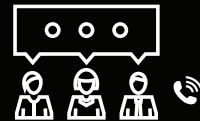


2

CASE MANAGERS



[OR]



24/7

AMERICAN LOGISTICS OPERATION CENTERS

3

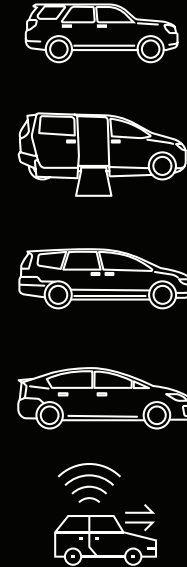


[ EQUATION FOR SUCCESS ]

( AMERICAN LOGISTICS ) + **Uber** = ON-DEMAND ACCESS FOR BETTER HEALTH OUTCOMES

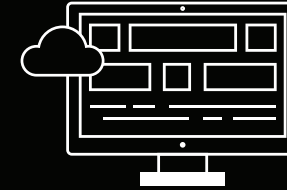
4

ALL MODES



5

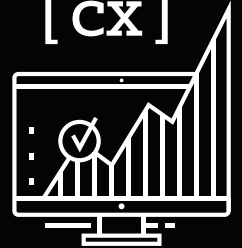
SOC 2 CERTIFIED



- GPS
- TIME STAMPS
- PICK
- DROP
- CAPITATION
- WILL CALL RETURNS
- REAL TIME DATA
- 100% TRACKED

6

[ CX ]



[ REAL-TIME DASHBOARDS ]

- REPORTING
- J.O.M.'S
- BILLING

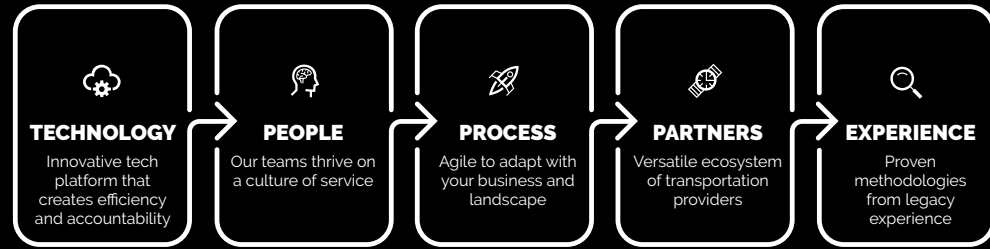
5 M + RIDESHARE TRIPS THRU A.LOGISTICS





## How we do this...

A systematic approach to transportation



Our approach to transportation management enables us to evolve with the changing landscape. We understand how fast our world is moving from ride-share to autonomous vehicles. Seamless integrations to our vast driver network, Real-time geo-fencing, enabling pick-up punctuality and ensuring accountability are just a few key features our proprietary applications do for your organization when partnering with us.

American

## Our brand attributes



**Be Genuine** – Strive to say and do the right thing. Stay humble, be forthright and honest in your interactions.

**Put People First** – Care for individuals more than processes or profit. Create solutions and provide experiences that improve lives.

**Foster Transparency** – We build our brand on trust. Acknowledge successes and accept responsibility for shortcomings and work towards solutions.

**Stay Relevant** – Learn, progress and innovate. Continue to forge thought leadership through a changing landscape.

**Maintain Tenacity** – Be diligent and determined. Relentless dedication to performance, execution and accountability.

**Teamwork** – Leverage partnership. When people of goodwill labor cooperatively in a honest and dedicated way, there is no end to what can be accomplished.

## A little about us



American Logistics was founded in 2006, but our roots in the transportation industry date back over 50 years. We provide transportation management in 18 states to healthcare payers and providers (NEMT/NMT) and Government (paratransit/dial-a-ride for municipalities). Owing to our reputation, the company is synonymous with reliable and punctual passenger-centric services.

The company is not only forward-thinking in terms of our technology but also in our corporate values putting people first and engendering a workplace of authenticity and transparency. We take social responsibility seriously by fostering innovative transportation solutions to help reduce the carbon footprint of any transportation program.



**Corporate Office &  
West Coast Operations Center**  
1192 S. Silicon Way, Suite C,  
St. George, UT 84770

**Executive Office**  
905 Calle Amanecer, #360  
San Clemente, CA 92673

866-222-4280  
american**logistics**.com