



# Liquid Composable GPU

Liquid Command Center™ Software Enables Composable GPU PCIe-enabled, Direct-Connected Resource for Dell EMC PowerEdge Server



Coupled with Dell EMC award-winning PowerEdge portfolio, Liquid delivers improved resource management and utilization with software-defined infrastructure composability for GPU solutions. Composable, high-performance GPU resources are allocated through software at bare metal across Liquid’s ultra-low-latency platform, simplifying scalability and resource orchestration. Unlocking the resource agility, performance and efficiency necessary for a wide variety of use cases in artificial intelligence and machine learning, Liquid enables the clustering of dozens of GPUs for the most demanding workloads, real-time GPU to CPU allocation, and even CPU bypass for “peer-to-peer” data transactions.

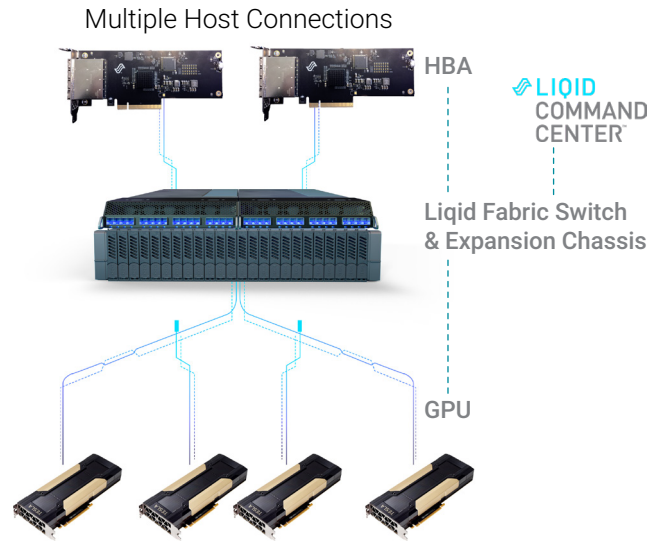
Liquid’s intelligent PCIe fabric and Command Center software enable IT users to significantly increase capacity

and bandwidth for GPU-based solutions, supercharging the most demanding applications for which lightning fast data manipulation is imperative. With the improved resource management and utilization Liquid delivers, IT users can leverage disaggregated GPU with FPGAs, CPUs, and Intel® Optane™ memory extension technologies to create balanced systems and recognize exponential increases in resource utilization without increasing the data center footprint.

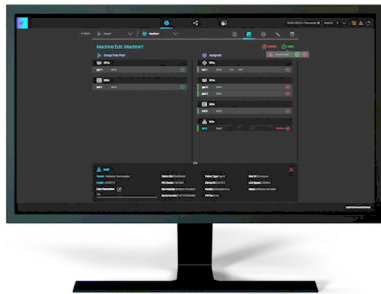
Composable GPU on Liquid fabrics expands the promise of composability, allowing IT users to create and maintain a more efficient data center infrastructure to meet the crushing and uneven data performance requirements of today’s AI-driven compute environments, as well as prepare for emerging, high value applications.

## Liquid Composable GPU Specifications

Architecture	GPU Pool Connected Over PCIe
Capacity Count	4x GPU per 2U Expansion Chassis
Scalability	Up to 100 Chassis with External PCIe Fabric
Host Interconnect	PCIe Gen3 (x16, x8, or x4 options)
Host Connections	Up to 8 Host per Chassis (8x4 or 4x8 or 2x16)
Max Host Count	100s Hosts with External PCIe Fabric Switch
Total Bandwidth	~50 GB/s – Full Duplex (per Chassis)
Cabling to Host	Standard MiniSAS HD Cabling
Management SW	Liquid Command Center™
Fail Over	HA Optional Support
Power	2000W (per Chassis)
Cooling	4x 35mm High Performance Fans



## Composable Bundle LQD8340 GPU JBOx



### Contents of the Solutions Bundle include:

Device	Quantity	Description
Software	1pcs	Liquid Command Center Management SW
Fabric	1pcs	Liquid Grid - PCIe Gen3 Fabric Switch
HBA	8pcs	Liquid PCIe Host Bus Adapters
Expansion	1pcs	PCIe Expansion Chassis
GPU	4pcs	NVIDIA GPU

\*All cables included

For quotes and/or inquiries, please contact: [Dell@liquid.com](mailto:Dell@liquid.com)

Liquid, Inc.  
 329 Interlocken Pkwy., Ste 200  
 Broomfield, CO 80021  
 office: +1 303.500.1551  
 email: [Dell@liquid.com](mailto:Dell@liquid.com)

### Expanded Topology

Multiple GPU Expansion Chassis

