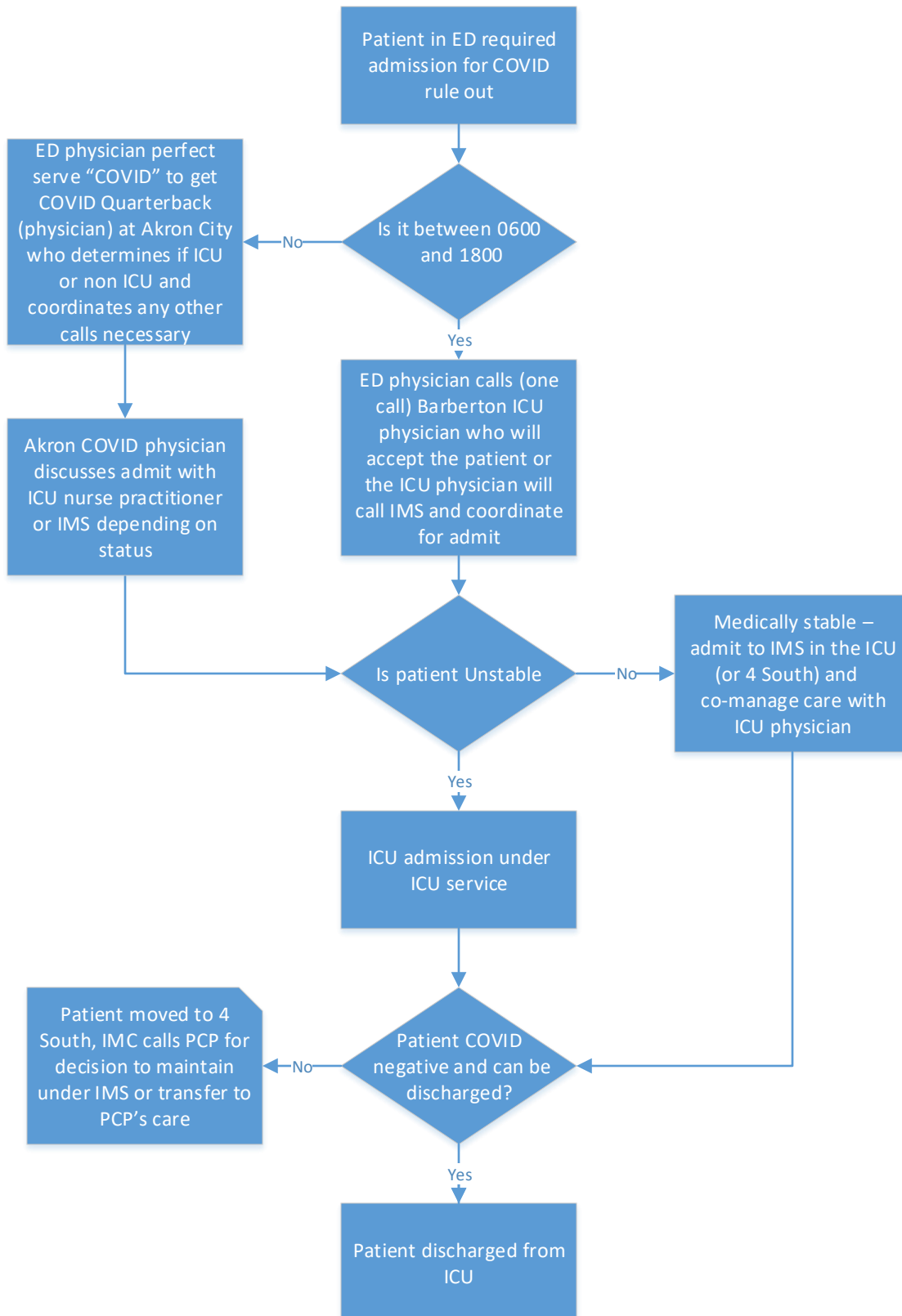


Barberton COVID Patient Admission Flow



- Medically stable in the ICU are co-managed by ICU and IMS. If transferred to 4 South a call is made to the PCP for decision to maintain IMS care or transfer care
- Follow-up for patients if pulmonary compromised or still on oxygen ICU pulmonologists will provide follow-up
- If a total of 8 patients in ICU conference with ICU attending, Unit Director and IMS for patient placement
- If negative testing but high presumptive diagnosis consider IMS to continue to follow patient until discharge
- Any push back contact Dr. Hughes