

Instructional Coaching

by Renee Whiting, Assoc. Director of Education

As the sun excitedly awakened the eastern sky, it was a new day in Adventist education, which at times is synonymous with change.

A new paradigm shift demanded educational practices that would meet the needs of all learners. We maintained our Adventist philosophical beliefs and our commitment to raising heaven-bound students; but how would we implement the new initiatives like standards-based learning and grading, differentiation, and data-driven instruction? The answer was inclusive of three main areas:

- Development and sustainability of interpersonal relationships
- Differentiated and reflective mentorship that is growth focused
- Data-driven instructional practices within a continuous school improvement framework

In response to the need to think differently about teaching and learning, the Southwestern Union Conference has opted to address the needs through instructional coaching.

What is or does an instructional coach do? We are so glad that you asked.

- An instructional coach is a teacher facilitator, that is experienced in the field and that walks hand in hand with the classroom teacher in the refinement and development of their professional craft. It is a non-evaluative, growth-focused partnership.
- They assist teachers in the process of data-driven clarity, learning to determine what is and isn't working and how to transition from practices that are no longer beneficial to themselves or their students.

- They demonstrate that all growth is goal focused. Learning targets and success criteria are based on evaluation rubrics and standards that define the best practices of successful educators.
- The instructional coach works to ensure that the process isn't about themselves. They resist the urge to problem solve for the educator. Instead, they facilitate the process of self-directed growth for each person. They understand that discovery and self-revelation have greater lasting effects.
- Finally, the coach/teacher relationship must be safe. It should create a space where authentic growth can take place and continue to thrive. The instructional coach assists the process of real learning in real time. That learning is typically inclusive of knowledge and use of resources, learning environments, and self-care.



As the sun hesitatingly begins to set in the western sky, the birth of a new normal makes the anticipation of tomorrow's possibilities for our learning community almost unbearable, but we take comfort in the Jeremiah 29:11 promise:

"FOR I KNOW THE PLANS I HAVE FOR YOU." Great things are on the horizon!

The North American Division *Educators' Convention*

The [NAD Educators' Convention](#) is scheduled for August 7-10, 2023 in Phoenix. The Union covers the cost of hotel and registration/meals; conferences cover travel and per diem. Three meals will be served at the convention center (Tuesday and Wednesday lunches; Tuesday dinner). Educators will be given per diem to cover other meals while at the convention. The SWUC educators will be staying at the Sheraton Grand Phoenix. Conferences will be developing rooming lists that will be sent on to the Union.



EDUCATION

Matters

in the Southwestern Union Conference

Volume 27 • Issue 1

PURPOSE

Leadership Camp—On October 15-18, the annual Leadership Camp was held at Lone Star Camp. It was great to be able to resume having it in-person again this year. Elder Helvis Moody with some of the conference youth directors led out with the programming, and student leaders from SWAU also contributed. They all did a great job! Eleven of the academies were represented, and we feel that they all benefited and were blessed by being there.

Next year, Leadership Camp will be held September 14-17, again at Lone Star Camp.

Recruitment of Teachers—Two initiatives regarding the recruitment of teachers have been developed: [SWUC Teacher Education Scholarship](#) and SWAU Intro to Teaching Dual Credit Course. Contact Dr. The at SWAU if an academy would like to offer the Intro to Teaching Course.



PLAN

REACH—The Texas Conference has created a REACH Padlet that can be accessed here: <https://padlet.com/TXOE/REACH>.

Support Services—See the [support services](#) provided by the SWUC Office of Education.

Coaching—The Southwestern Union has hired Renee Whiting to serve as an instructional coach for our schools. She is busy coordinating Professional Learning Communities (PLCs) across the Union, which are currently focused on embedding standards-based learning in the context of continuous school improvement in their practices.



Renee Whiting

PRACTICE

Webinars—See the attached flyers for 2022-2023 Educator and Parent Webinars.

Secondary Workshops

Music Teachers' Workshop On October 3-4, the Southwestern Union arranged a workshop for the secondary music teachers of the Union. Southwestern Adventist University's music department, led by Dr. Devon Howard, planned and organized the event. The University music professors led out in discussions about various topics of interest to our teachers. Topics included music trips, music festival, worship music, etc. The feedback has been very positive, so a workshop will be provided each fall, rotating through the various subject areas.

History Teachers' Workshop During the fall of 2023, the Union will plan to collaborate with SWAU again and have a workshop for secondary history teachers. Details will be shared when they are available.

Robotics—The Robotics Tournament is March 17-19, 2023 at Lone Star Camp. Access the [website](#) for more information.



ASCD—The [ASCD Annual Convention](#) is March 31-April 3, 2023 in Denver.

Certification—NAD voted to give any educator with an active Basic, Standard, Professional, and/or Administrator certification, who worked during the pandemic in our system, 100 clock hours to be applied to either academic or non-academic certification renewal.



EDUCATION *Matters*

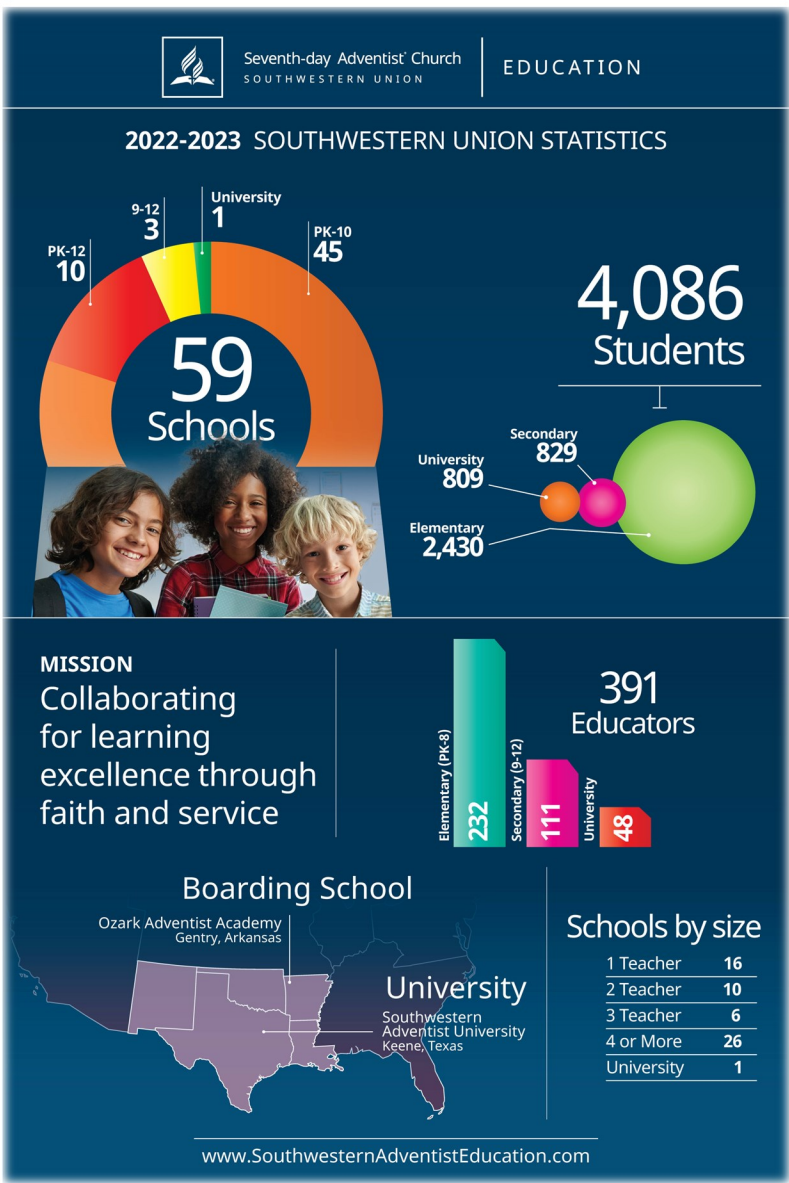
in the Southwestern Union Conference

Volume 27 • Issue 1

PRODUCT

Data—Survey Data is available on Union-wide implementation of [Continuous School Improvement \(CSI\)](#) and [Standards-based Learning \(SBL\)](#).

Data Cards—[2022-2023 Data Cards](#) and [Academy Cards](#) are available. Contact the SWUC Office of Education if you would like copies.

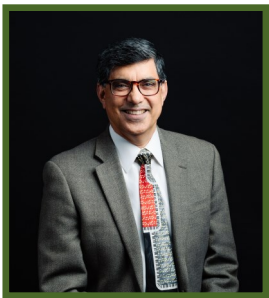


Evaluation Forms—The [Teacher/Leadership Evaluation Forms](#) have been revised. They can be used as both a self-evaluation tool and an administrative evaluation tool. Based on the data collected, [Individual Professional Development Plans](#) can be created.

AE Connect—A new NAD SIS is currently in development. There will be a pilot for next school year (23'-24') for select schools. Much thought is being put into class structure and gradebook. If you would like to participate in development focus groups, please email Martha Ban at marthaban@nadadventist.org.



CONGRATULATIONS AND FAREWELL TO



Raul Aguilar

*on his retirement as
Texas Conference Associate Superintendent*

WELCOME TO



Sandra Patterson

as Texico Conference Superintendent

WELCOME TO



Adam Littell

as Oklahoma Conference Superintendent

WELCOME TO



Renee Whiting

as SWUC Associate Director of Education

SouthwesternAdventistEducation.com

Education@SWUC.org



SOUTHWESTERN UNION