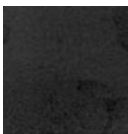


1520 mm | 59.8"

2064 mm | 81.3"



### METAL OPTIONS



Mild Steel

### DESCRIPTION

Clear / Grey / Bronze Mirror Options | Patinated Blue Black Mild Steel Frame

### DIMENSIONS

1520W x 100D x 2064H mm | 59.8W x 3.9D x 81.3H in

### DISCLAIMERS:

**METALS** - All raw metals; brass, copper, mild steel in their respective finishes are unsealed. Metals in a raw, natural and unsealed state will oxidise and change in colour and tone. This is a completely natural process, therefore all our metal finishes will need to be maintained with an appropriate wax/crème, the application of which will build up a natural sealant over time. **Ferrogain**: a lightly textured matte paint finish.