



Shown with door, accent bar and trivet in painted metallic black finish.

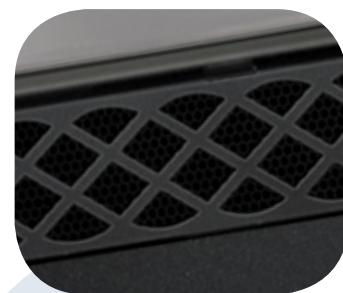
CDVS280 - Direct Vent^{*} Compact in Stature, Not Power!

This stove may be compact in stature, but not in power! If you have limited space but still desire the beauty, warmth and conveniences of a gas stove, the CDVS280 is the answer. Offering a variable heat range up to 30,000 BTU's, you control the exact amount of heat needed. The precisely engineered burner system produces unique YELLOW DANCING FLAMES[®] which fill your room with a warm, inviting glow. This extraordinary small stove delivers great peace of mind.

^{*}B-vent adaptor available.



Decorative accent bar and door available in painted metallic black, 24 Karat gold plated or satin chrome plated finishes.



Painted black decorative inset adds a designer's touch and comes standard.

Accessories

It's easy to update the look of your fireplace by simply changing the decorative accessories.

Insert Louvres



Polished Brass Finish
Antique Brass Finish
Brushed Stainless Steel Finish
Painted Black Finish

Bevelled Flashing Kits

Available in 6".



Painted Textured Satin Black Finish

Deluxe Flashing Kits



6" Painted Black Finish

9" Painted Black Finish

Faceplates



Brushed Nickel

Brushed Copper

Painted Black

Cast Iron Surrounds



Painted Black Finish

Porcelain Enamel Majolica Brown Finish

Arched Cast Iron Surround & Door Kit



Available for CDI-30 & CBI360.

Firebox Panel Options

Firebox panels add a masonry or a contemporary feel to your firebox.



Decorative Sandstone Brick



MIRRO-FLAME™ Porcelain Reflective Radiant Panels

River Rock Media Kits

Switch out existing logs to a more contemporary river rock setting. Available for CDI-30.



Grey



Multi-colored

Andirons

Designed to simply stand in front of the logs and give the optimum masonry look and feel. Available in Painted Black.



Riser Box

Available in Painted Black Finish.



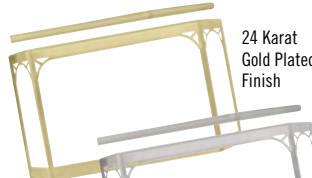
Remote Controls

Remotes with digital read out and modulating control give you the comfort level you need at the touch of a button.

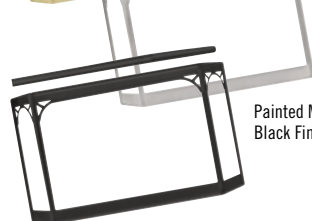


Door & Accent Bar Options

Available for CDVS280 & CDVS500.



24 Karat Gold Plated Finish



Satin Chrome Plated Finish



Painted Metallic Black Finish

Extrusion Trim Kits

Available in Painted Textured Satin Black finish.



Three-Sided Kit



Four-Sided Kit

Contemporary Trim Kit



	CDI-30	CBI360	CDI30	CDVS280	CDVS500	CDVS600
Electronic Ignition	-	-	-	-	-	S
Stove Doors (Painted Metallic Black, Satin Chrome Plated or 24 Karat Gold Plated finishes)	-	-	-	0	0	-
Louvers (Polished Brass, Antique Brass, Brushed Stainless Steel or Painted Black finishes)	0	0	-	-	-	-
Ornamental Inset and Trivet (Painted Black finish)	-	-	-	S	S	-
Faceplates (Brushed Nickel, Brushed Copper or Painted Black finishes)	0 •	0 •	0 •	-	-	-
Bevelled Flashing Kit	0	0	-	-	-	-
6" and 9" Deluxe Flashing	0	0	-	-	-	-
Backerplate (three or four-sided)	-	-	0	-	-	-
Cast Iron Surround Kit / Flashing	0	0	0	-	-	-
Extrusion/Contemporary Trim Kits	-	-	0	-	-	-
MIRRO-FLAME™ Porcelain Reflective Radiant Panels	0	0	0	-	-	-
Sandstone Decorative Brick Panels	0	0	0	-	-	0
Blower Kit	S	S	S	S	S	0
Millivolt Wall Thermostat	0	0	0	0	0	0
On/off Remote Control	0	0	0	0	0	0
Thermostatic Remote Control	0	0	0	0	0	0
Accent Bars (Painted Metallic Black, Satin Chrome Plated or 24 Karat Gold Plated finishes)	-	-	-	0	0	-
Andirons (Available in Painted Black finish)	0	0	0	0	0	0
Riser Box - Available in Painted Black finish	0	0	0	-	-	-
Alternate River Rock Media Kit	0	-	-	-	-	-

- = Not Available 0= Optional S= Standard
• Must be purchased to complete unit

Backer Plates

Available as three or four-sided in Painted Black finish.



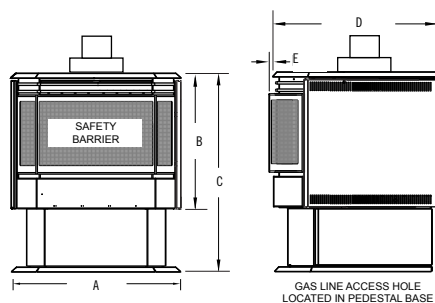


CDVS280

Features & Benefits

- 260 sq. in. glass area
- No electricity required to light or operate - millivolt system ensures reliable use even during power failures
- Includes heat activated variable speed blower
- Easy clean hinged door
- Exclusive PHAZER® log set with traditional glowing charcoal embers
- Metallic black accent bar, ornamental inset and trivet come standard
- 85% Steady State maximum efficiency
- Stainless steel flex connector and shut off
- 100% SAFE GUARD® automatic gas shut off for your peace of mind
- YELLOW DANCING FLAMES® fill the firebox with realistic flames
- Door available in metallic black, satin chrome plated or 24 Karat gold plated finishes
- Optional decorative accessories available to transform the design of your stove
- Optional B-vent adapter kit available
- Optional remote with digital read out and thermostatic control
- Bedroom, bathroom, bed sitting and mobile home approved
- President's Limited Lifetime Warranty

	CDVS280
BTU's (Input)	30,000
Venting	Top* 4" & 7"
Minimum Clearances to Combustibles	
Corner	1"
Rear	2"
Sides	7"
Glass Type	Ceramic
Glass Size	
Height	11 3/8"
Width	24 1/2"
Efficiencies	
EnerGuide	57.4%
AFUE	65%
Steady State	85%
Mobile Home Certified	Yes



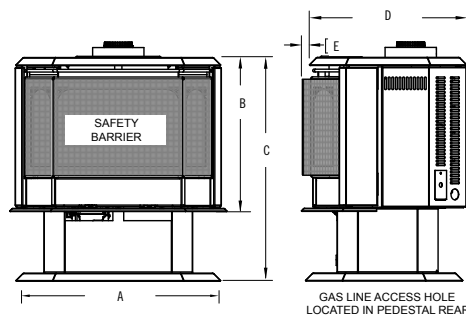
	A	B	C	D	E
CDVS280	22 1/2"	17 3/4"	26 3/4"	18 1/2"	1 3/4"

CDVS500

Features & Benefits

- 357 sq. in. glass area
- No electricity required to light or operate - millivolt system ensures reliable use even during power failures
- Triple burner "turbo boosts" the heating power to increase the already impressive 30,000 BTU's to 44,000 BTU's
- Includes heat activated variable speed blower
- Easy clean hinged door
- Exclusive PHAZER® log set with traditional glowing charcoal embers
- Metallic black accent bar, ornamental inset and trivet come standard
- 84% Steady State maximum efficiency
- Stainless steel flex connector and shut off
- 100% SAFE GUARD® automatic gas shut off for your peace of mind
- Door available in metallic black, satin chrome plated or 24 Karat gold plated finishes
- Optional B-vent adapter kit available
- Optional decorative accessories available to transform the design of your stove
- Optional remote with digital read out and thermostatic control
- Bedroom, bathroom, bed sitting and mobile home approved
- President's Limited Lifetime Warranty

	CDVS500
BTU's (Input)	44,000
Venting	Top* 4" & 7"
Minimum Clearances to Combustibles	
Corner	1"
Rear	2"
Sides	7"
Glass Type	Ceramic
Glass Size	
Height	13 7/8"
Width	25 3/4"
Efficiencies	
EnerGuide	70%
AFUE	67%
Steady State	84%
Mobile Home Certified	Yes



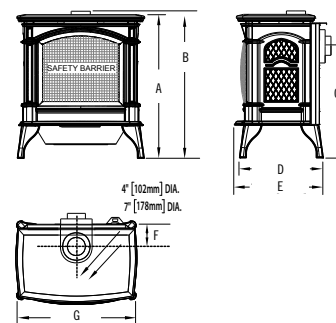
	A	B	C	D	E
CDVS500	28 3/4"	21"	30 3/4"	21 1/4"	2"

CDVS600

Features & Benefits

- 394 sq. in. glass area
- Electronic ignition with battery back-up
- Larger viewing area with its new updated design
- Elegant arched front and a sleek, sophisticated outer casting design
- ACS (Anti-Condensation Switch) controls pilot usage for cold climate installations
- Exclusive PHAZER® log set with traditional glowing charcoal embers
- Fuel saving electronic ignition with battery back-up and on/off switch
- Built-in adjustable flame/heat control for maximum comfort and efficiency
- Decorative cast iron trivets for rear vent installations (available in painted black finish)
- Optional remote with digital read out and thermostatic control
- Optional decorative accessories available to transform your stove to the exact design you need
- Optional B-vent adaptor kit
- Optional heat circulating blower kit with variable speed and thermostatic control
- Bedroom, bathroom, bed sitting room and mobile home approved
- President's Limited Lifetime Warranty

	CDVS600
BTU's (Input)	35,000
Venting	Top*/Rear 4" & 7"
Minimum Clearances to Combustibles	
Corner	2"
Rear	6"
Sides	6"
Glass Type	Ceramic
Glass Size	
Height	18 3/4"
Width	21"
Efficiencies	
EnerGuide	63.1%
AFUE	64%
Steady State	78%
Mobile Home Certified	Yes



	A	B	C	D	E	F	G
CDVS600	30 1/4"	37"	24"	17 1/4"	19 1/2"	5 1/2"	27"