



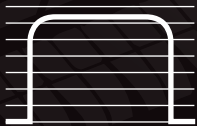
# ENHANCED PERFORMANCE



Maximize transmission performance and durability with Raybestos® Powertrain's GPZ friction clutch plates! This state-of-the-art friction technology outperforms OE material by as much as 20 percent to withstand high stress, high temperatures and repeated cycling. With performance that improves as power increases, GPZ's outstanding performance benefits are perfect for heavy-duty vehicles and high-stress driving.

### RECOMMENDED USE:

Heavy-duty vehicles, commercial vehicles and high-stress driving applications.



SMOOTH ENGAGEMENTS



GREATER TORQUE CAPACITY



HIGHER HEAT RESISTANCE



OPTIMUM PERFORMANCE



WITHSTANDS HIGH HORSEPOWER



# FRICTION CLUTCH-PACKS



MAKE	TRANSMISSION	YEAR	COMPONENTS	PART NO.
CHRYSLER	68RFE	2007-ON	3 2C GPZ, 6 Overdrive GPZ, 7 Low/Reverse High Energy, 5 Underdrive GPZ, 7 Low/Reverse High Energy, 2 Reverse High Energy, 5 Underdrive GPZ, 6 Overdrive GPZ, 3 4C GPZ	RGPZ-6800
CHRYSLER	A518 / 46RH, A518ES / 46RE, A618 / 47RH, A618ES / 47RE, 48RE	2003-ON	4 Rear (Forward) GPZ 48RE, A618, 6 Forward (A518, A618, 47RE), Direct (A518, A618, 47RE, 48RE.) GPZ, 6 Overdrive Brake GPZ, 10 Overdrive Direct Tan	RGPZ-016
CHRYSLER	A518 / 46RH, A518ES / 46RE, A618 / 47RH, A618ES / 47RE, 48RE	1998-ON	10 Forward (A518, A618, 47RE), Direct (A518, A618, 47RE, 48RE) GPZ, 5 Overdrive Brake GPZ, 10 Overdrive Direct Tan	RGPZ-47
CHRYSLER	A518 / 46RH, A518ES / 46RE, A618 / 47RH, A618ES / 47RE, 48RE	1990-ON	9 Forward Direct (A518, A618, 46RE, 47RE), Direct (48RE) (.084") GPZ, 5 Overdrive Brake GPZ, 10 Overdrive Direct Tan, 9 Overdrive Direct Steels	RGPZ-4784
CHRYSLER	AS69RC	2013-ON	6 K2 Clutch GPZ, 6 K3 Clutch GPZ, 8 B2 Clutch GPZ, 7 K1 Clutch GPZ	RGPZ-009
FORD	10R80	2017-ON	3 'A' Clutch, 5 B Clutch, 5 C Clutch, 6 D Clutch, 5 E Clutch, 4 F Clutch	RGPZ-268
FORD	5R110W TorqShift	2005-ON	3 Overdrive GPZ, 4 Intermediate GPZ, 6 Low/Reverse, 6 Low/Reverse Stage-1™ Red, 4 Forward GPZ, 4 Direct GPZ, 3 Coast Stage-1™ Red	RGPZ-5110
FORD	5R110W TorqShift	2003-2004	5 Forward GPZ, 5 Forward Direct Kolene®	RGPZ-5112
FORD	5R110W TorqShift	2005-2010	5 Forward GPZ, 5 Forward Direct Kolene®	RGPZ-5122
FORD	6R140	2011-ON	5 Low Reverse Waved High Energy Segmented, 8 Overdrive Clutch (Selective GPZ), 12 Direct Clutch GPZ, 5 Forward Clutch Waved High Energy	RGPZ-6R140
FORD	6R60, 6R75, 6R80	2008-ON	12 A Forward, D Low/Reverse GPZ, 6 Overdrive GPZ, 10 Direct Intermediate GPZ	RGPZ-017
FORD	AOD, AODE, 4R70E, 4R70W, 4R75W	1992-ON	6 AODE, 4R70W Direct GPZ, 4 Intermediate Red, Stage-1™, 5 Forward/Reverse Red, Stage-1™	RGPZ-108
FORD	C6	1967-1975	5 Forward HP Stage-1™ Red, 6 Low/Reverse Stage-1™ Red, 5 Direct GPZ Clutch	RGPZ-008
FORD	E40D, 4R100	1998-ON	3 Overdrive GPZ Clutch 4R100, 3 Coast Graphitic, 3 Intermediate GPZ Clutch 4R100, 6 Low/Reverse Tan Radial, 6 Direct GPZ Clutch, 5 Forward GPZ Clutch	RGPZ-4100
GM	10L80	2018-ON	3 'A' Clutch, 5 B Clutch, 5 C Clutch, 6 D Clutch, 5 E Clutch, 4 F Clutch	RGPZ-268
GM	10L90	2018-ON	3 'A' Clutch, 5 B Clutch, 6 C Clutch, 7 D Clutch, 5 E Clutch, 4 F Clutch	RGPZ-269
GM	6L80	2006-ON	5 1-2-3-4 GPZ, 5 2-6 Clutch GPZ, 5 Low/Reverse GPZ	RGPZ-021
GM	6L90	2006-ON	6 1-2-3-4 GPZ, 6 2-6 GPZ, 7 4-5-6 GPZ, 6 Low/Reverse GPZ	RGPZ-022
GM	8L45, 8L90	2015-ON	4 C1 Clutch GPZ, 3 C2 Clutch GPZ, 4 C3 Clutch GPZ, 5 C4 Clutch GPZ, 4 C5 Clutch GPZ	RGPZ-019
GM	TH250, TH250C, TH350, TH350C, TH375B	1969-1986	9 Forward Direct GPZ, 5 Low/Reverse GEN 2 Blue Race Product; High Static, 3 Intermediate GPZ	RGPZ-011
GM	TH400, 3L80, TH400-R2, TH425, THMR2, 3L80HD, TH375, TH475, 4L80E, 4L85E	1965-1990	3 Intermediate 3L80, 4L80E (.080") GPZ, 10 Forward Direct GPZ	RGPZ-007
GM	TH400, 3L80, TH400-R2, TH425, THMR2, 3L80HD, TH375, TH475, 4L80E, 4L85E	1996-ON	3 Overrun 4L80E Tan, 4 4th Tan, 4 Intermediate High Energy, 10 Forward Direct GPZ	RGPZ-010
GM	TH700-R4, 4L60, 4L60E, 4L65E, 4L70E	1987-ON	2 Overrun Tan, 5 Low/Reverse Tan, 4 Reverse Input 2nd Design Tan, 5 Forward Tan, 6 3rd, 4th GPZ Clutch 4L60E, TH700-R4	RGPZ-001
GM	TH700-R4, 4L60, 4L60E, 4L65E, 4L70E	2001-ON	2 Overrun Tan, 5 Low/Reverse Tan, 4 Reverse Input 2nd Design Tan, 5 Forward Tan, 7 3rd, 4th GPZ Clutch 4L65E	RGPZ-005
MERCEDES	722.9	2005-ON	6 B2 GPZ, 8 B1, B3 ID Spline GPZ, 5 K1 ID Spline GPZ, 5 K3 SS OD Spline GPZ, 5 K3 SS ID Spline GPZ, 5 K1 OD Spline GPZ, 5 G3 GPZ, 5 K2 OD Spline GPZ, 5 K2 ID Spline GPZ, 8 B1, B3 OD Spline GPZ	RGPZ-025
MERCEDES	722.6 (W5A330, W5A580)	1996-2000	5 B2 GPZ, 10 K1 & B1 GPZ, 6 K2 Large ID GPZ, 6 K2 Large ID GPZ, 5 B3 GPZ, 5 K3 Double sided, ID Spline GPZ	RGPZ-024
NISSAN / INFINITI	RE7R01A / JR710E, JR711E	2009-2012	6 Reverse Brake GPZ, 6 Input GPZ JR710E, RE7R01A GPZ, 2 Front Brake GPZ, 5 Direct Clutch GPZ, 4 2, 3, 4, 6 Brake GPZ, 5 Low Brake GPZ, 4 High/Low Reverse Brake GPZ (Subaru 5 Speed)	RGPZ-266
NISSAN / INFINITI	RE7R01A / JR710E, JR711E	2009-2012	8 B1 Reverse Brake GPZ, 7 Input GPZ JR711E, RE7R01A, 2 Front Brake GPZ, 6 Direct Clutch GPZ, 5 2, 3, 4, 6 Brake GPZ, 5 Low Brake GPZ, 4 High/Low Reverse Brake GPZ (Subaru 5 Speed)	RGPZ-267
TOYOTA / LEXUS	AB60E, AB60F	2007-ON	4 Reverse 5-6 (#1 Brake) (B1) GPZ, 6 1-2-3-4 GPZ, 5 3-5 Reverse (Rear) (C3) GPZ, 5 4-5-6 (Direct) (C2) GPZ, 4 2nd Brake (#3 Brake) (B3) GPZ, 4 6th (#2 Brake) (B2), 7 Reverse (#4 Brake) (B4) GPZ	RGPZ-023
ZF CHRYSLER	8HP45X, 8HP55A, 8HP55AH, 8HP70XH, 8HP90	2013-ON	6 A Brake ID Spline (Flat) GPZ, 5 B Brake (Flat) GPZ, 14 C & E OD Spline (Waved) GPZ, 5 D Brake ID Spline (Flat) GPZ	RGPZ-020
ZF CHRYSLER	8HP55 / OBK, 8HP70, 8HP50Z	2010-2014	5 A Brake ID Spline (Flat) GPZ, 5 B Brake ID Spline (Flat) GPZ, 11 C & E OD Spline (Waved) GPZ, 4 D Brake ID Spline (Flat) GPZ	RGPZ-018