



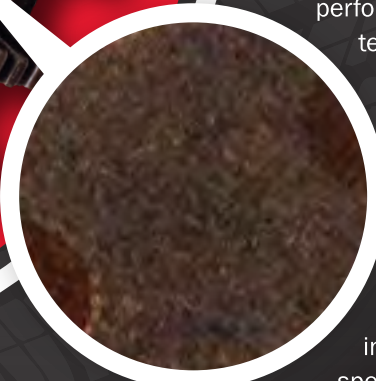
**ENHANCED  
PERFORMANCE**



**TORQKIT**

MADE WITH GPZ TECHNOLOGY

Working to boost your truck's performance? Then you know that those OE clutches have to go! With an enhanced shift feel, increased torque capacity and smooth engagements, Raybestos® Powertrain designed our drop-in Torqkits to help tear up the drag strip, bust through the mud and pull toward success. Raybestos Powertrain Torqkits feature our GPZ technology and steel reaction plates, which work together to deliver improved performance, reduced core temperatures and increased durability.



**RECOMMENDED USE:**

High-stress diesel or towing applications in which horsepower and torque have been increased beyond OE specification.



**INCREASED  
DURABILITY**



**INCREASED  
TORQUE CAPACITY**



**REDUCED CORE  
TEMPERATURES**



**IMPROVED  
CLUTCH LIFE**

**4x4**

**PERFECT FOR  
4WD & FLEET**

# ENHANCED PERFORMANCE SOLUTIONS



MAKE	TRANSMISSION	YEAR	TYPE	COMPONENTS	PART NO.
ALLISON	LT1000, LT2000, LT2400 SERIES	1999-2010	Torqkit	C1 GPZ Torqkit, C2 GPZ Torqkit, C3 GPZ Torqkit, C4 Torqkit, C5 Super Pak	RCPTK-1000
ALLISON	LT1000, LT2000, LT2400 SERIES	2011-ON	Torqkit	C1 GPZ Torqkit, C2 GPZ Torqkit, C3 GPZ Torqkit with Back Plate, C4 Torqkit, C5 Super Pak	RCPTK-1001
ALLISON	LT1000, LT2000, LT2400 SERIES	1999-2010	Torqkit	5 C3, C4 Steels, 1 C3, C4 Spring Steels, 1 C3 P1 Spacer Steels, 6 C3, C4 GPZ	RTK-1033
ALLISON	LT1000, LT2000, LT2400 SERIES	1999-ON	Torqkit	1 C1 Apply Plate Steel, 1 C1 Apply Plate, 8 C1 SS ID Spline GPZ (Requires Apply Plate), 8 C1 SS, OD Spline GPZ (Requires Apply Plate)	RTK-1001
ALLISON	LT1000, LT2000, LT2400 SERIES	1999-ON	Torqkit	8 C2 Steels, 7 C2 GPZ	RTK-1002
ALLISON	LT1000, LT2000, LT2400 SERIES	1999-2010	Torqkit	1 C3, C4 Steels, 1 C3, C4 Spring Steels, 5 C3, C4 GPZ, 3 C3, C4 (Alt. .079") (Selective) Steels, 1 C3 P1 Spacer Steels	RTK-1013
ALLISON	LT1000, LT2000, LT2400 SERIES	1999-2010	Torqkit	5 C3, C4 Steels, 1 C3, C4 Spring Steels, 6 C3, C4 GPZ	RTK-1014
ALLISON	LT1000, LT2000, LT2400 SERIES	2011-ON	Torqkit	5 C3, C4 Steels, 5 C3, C4 GPZ, 1 C3 P1 Spacer Steels	RTK-1023
ALLISON	LT1000, LT2000, LT2400 SERIES	2011-ON	Torqkit	6 C3, C4 Steels, 6 C3, C4 GPZ, 1 C3, C4 (Alt. . 079") (Selective) Steels	RTK-1024
ALLISON	LT1000, LT2000, LT2400 SERIES	2011-ON	Torqkit	6 C3, C4 Steels, 6 C3, C4 GPZ, 1 C3 P1 Spacer	RTK-1043
CHRYSLER	48RE (Only)	2003-ON	Torqkit	1 Front (Direct) Torqkit, 1 Rear (Forward) Torqkit, 1 Overdrive Torqkit, 1 OD Direct Plates Combo (Steel and Friction)	RCPTK-4800
CHRYSLER	48RE (Only)	2003-ON	Torqkit	8 Front Direct SS ID Spline GPZ, 8 Front Direct SS OD Spline GPZ, 1 Thin Steel Apply Plate, 1 Stepped Steel Backing Plate	RTK-4801
CHRYSLER	A518 / 46RH, A518ES / 46RE, A618 / 47RH, A618ES / 47RE, 48RE	2003-ON	Torqkit	5 Rear (Forward) ID Spline GPZ, 4 Rear (Forward) OD Spline Kolene® Steels, 1 Front (Direct) OD Spline Steel Pressure Plate	RTK-4802
CHRYSLER	A518 / 46RH, A518ES / 46RE, A618 / 47RH, A618ES / 47RE, 48RE	2003-ON	Torqkit	7 Overdrive Brake ID Spline GPZ, 7 Overdrive Brake OD Spline Kolene® Steels, 1 Overdrive Brake Steel	RTK-4803
CHRYSLER	68RFE	2007-ON	Torqkit	1 Underdrive Clutch Torqkit GPZ, 1 2C Clutch Torqkit GPZ, 1 Overdrive Clutch Torqkit GPZ, 1 4C Clutch Torqkit GPZ, 1 Reverse and Low Reverse Clutch GPZ	RCPTK-6800
CHRYSLER	68RFE	2007-ON	Torqkit	5 Underdrive SS ID Spline GPZ, 5 Underdrive SS OD Spline GPZ	RTK-6801
CHRYSLER	68RFE	2007-ON	Torqkit	5 2C GPZ, 5 2C Steel Plate	RTK-6802
CHRYSLER	68RFE	2007-ON	Torqkit	4 4C Double Sided ID Spline GPZ, 4 4C Kolene® Steel, 1 4C Clutch GPZ	RTK-6804
CHRYSLER	68RFE	2007-ON	ZPAK	1 Overdrive Reaction Plate, 7 Overdrive OD Spline GPZ, 7 Overdrive ID Spline GPZ, 1 OD/UD Pressure Plate, 1 OD/Rev Pressure Plate	RZP-008
FORD	5R110W TorqShift	2003-2004	Torqkit	1 Overdrive Torqkit GPZ, 1 Low Reverse Maxpak, 1 Coast Maxpak, 1 Direct Torqkit GPZ, 1 Intermediate Torqkit GPZ, 1 Forward Torqkit GPZ	RCPTK-5110
FORD	5R110W TorqShift	2005-2007	Torqkit	1 Forward Torqkit GPZ, 1 Intermediate Torqkit GPZ, 1 Overdrive Torqkit GPZ, 1 Low Reverse Maxpak, 1 Coast Maxpak, 1 Direct Torqkit GPZ	RCPTK-5111
FORD	5R110W TorqShift	2003-2007	MaxPak	6 Low/Reverse Stage-1™, 6 Low/Reverse Kolene® Steel	RMAX-06
FORD	5R110W TorqShift	2003-ON	MaxPak	3 Coast Stage-1™, 3 Coast Kolene® Steel	RMAX-07
FORD	5R110W TorqShift	2003-ON	Torqkit	1 Snap Ring, 5 Forward/Direct Kolene®, 1 Direct, 1 Forward/Direct, 6 Direct GPZ, 1 Direct Piston	RTK-5111
FORD	5R110W TorqShift	2003-2004	Torqkit	5 Forward ID Spline GPZ, 5 Forward/Direct	RTK-5112
FORD	5R110W TorqShift	2003-2004	Torqkit	5 Intermediate GPZ, 5 Intermediate Steel, 1 Intermediate Backing Plate	RTK-5113
FORD	5R110W TorqShift	2003-ON	Torqkit	5 Overdrive GPZ, 4 Overdrive Kolene®, 2 Overdrive Steel, 1 Overdrive Piston	RTK-5114
FORD	5R110W TorqShift	2005-2010	Torqkit	5 Forward ID Spline GPZ, 5 Forward Kolene®	RTK-5122
FORD	5R110W TorqShift	2005-ON	Torqkit	5 Intermediate GPZ, 5 Intermediate, 1 Intermediate Backing Plate	RTK-5123
GM	4L80E	1991-ON	MaxPak	5 4th Clutch Stage-1, 3 Overrun Stage-1, 14 Forward/Direct Stage-1, 5 Intermediate Stage-1	RFMAX-001
GM	6L80	2006-ON	ZPAK	1 3-5 Reverse Steel, 5 3-5 Reverse ID Spline GPZ, 4 3-5 Reverse OD Spline GPZ, 1 3-5 Reverse DS OD Spline GPZ	RZP-005
GM	6L80/6L90	2006-ON, 2007-ON	ZPAK	1 3-5 Reverse Steel, 5 3-5 Reverse ID Spline GPZ, 4 3-5 Reverse OD Spline GPZ, 1 3-5 Reverse DS OD Spline GPZ	RZP-005