

Goodalls Tailors

www.GoodallsTailors.co.uk

Self-Measure Form

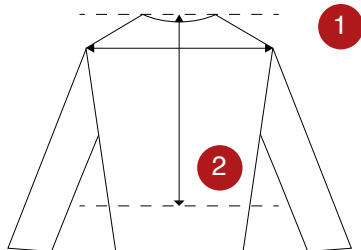
Please use this form to record your measurements before entering them online. If you need to send them by post please enter all your details and send to **Goodalls Tailors, Butcher Lane, Rothwell, Leeds LS26 0DB.**

Name	<input type="text"/>	Rank	<input type="text"/>
Regiment	<input type="text"/>		
Address	<input type="text"/>		
	<input type="text"/>	Postcode	<input type="text"/>
Telephone	<input type="text"/>		
Email	<input type="text"/>		

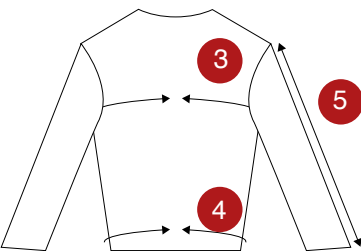
Please follow the instructions and enter your measurements in the space provided. Our staff are professionals and can usually spot any mistake you may have made whilst taking your measurements. If we feel your measurements may be wrong we will contact you for further confirmation before continuing with your uniform.

Remember our **NO-NONSENSE 100% GUARANTEE**

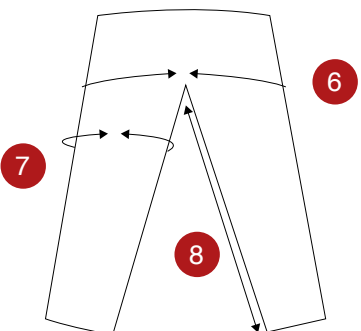
This means that if you are not completely satisfied with the fit of your Mess Uniform we will be only too happy to make any alterations required free of charge*.



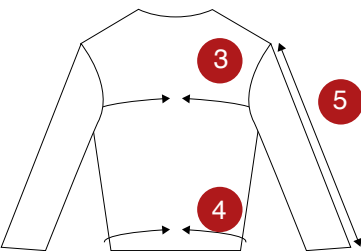
1. SHOULDERS Measure across the back from shoulder to shoulder.



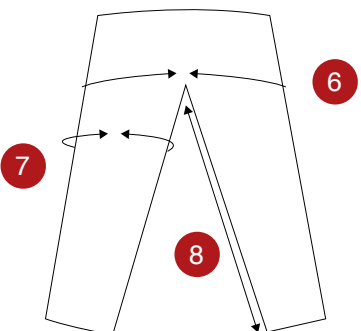
2. NAPE TO WAIST Place your tape measure under your collar and allow the tape to follow the contour of your body. Measure down parallel to your naval.



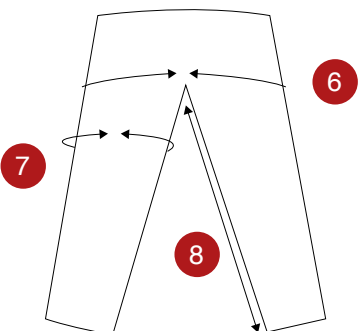
3. CHEST Measure over the shoulder blades, well up under the arms, around the fullness of the chest. Do not measure over bulky clothing.



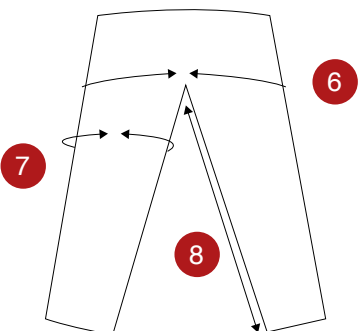
4. WAIST Measure around your waist passing the tape measure over your navel (Mess trousers are worn high and with braces).



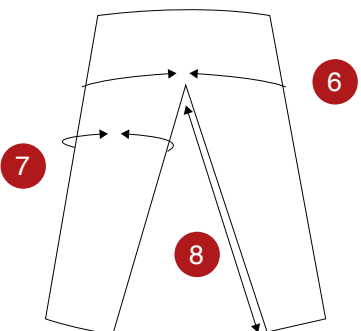
5. SLEEVE LENGTH Place your tape measure on shoulder point (and measure in a straight line down the outside of your arm to your cuff).



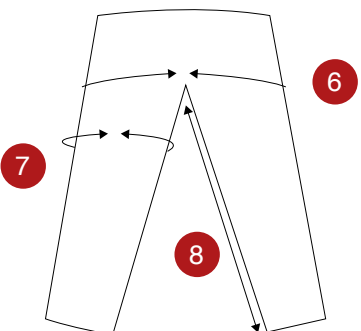
6. SEAT Measure around the prominence of the seat. Do not measure over bulky clothing.



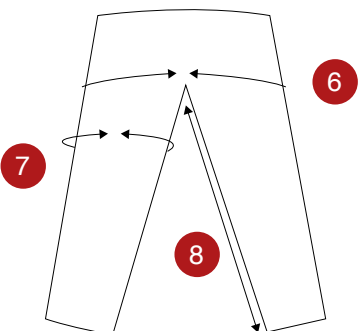
7. THIGH Measure around the thigh at its fullest.



8. INSIDE LEG In stocking feet measure from well up into the crotch inside the leg to the floor. We will make the necessary allowance for footwear.



9. COLLAR Measure around your bare neck at its fullest part. Add half inch to find your collar size.



10. HEIGHT In stocking feet, measure in inches from the top of your head to the floor.

11. BOOT SIZE If you are ordering boots please indicate the size you require.

* Alterations must be carried out within 1 month of purchase.