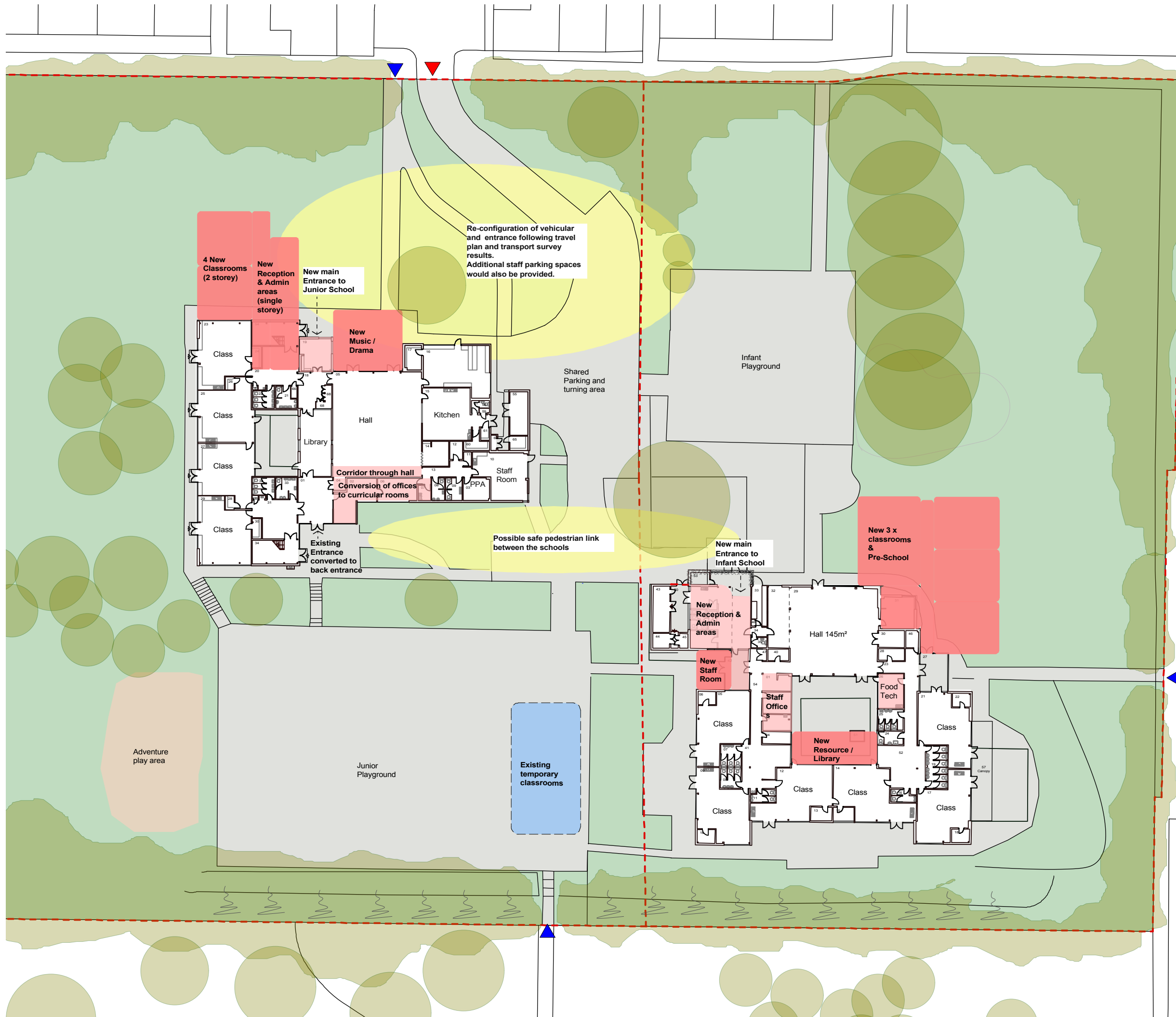


Property Services
Merton Infant and Junior Schools

Proposed Expansion to Add 1 Form of Entry to both Schools
Total after development:
Infant - 270 places
Junior - 360 places

Proposed Ground Floor Plan



- New Build
- Refurb.
- Temporary (to be removed on completion of new build works)
- Notional re-landscaped area
- Existing Pedestrian Access
- Existing Vehicular Access
- Site Boundary

North

0m 5m 25m

1:500 @ A3
P09165-02 Rev F7
 October 2012