

WX5 Series, 3" Wing Flush Mount Corner Guard

- Standard Heights are 4' and 8'.
- Custom Heights are available, all custom cuts have a plus or minus 1/8" tolerance.

HEIGHT:

COLOR:

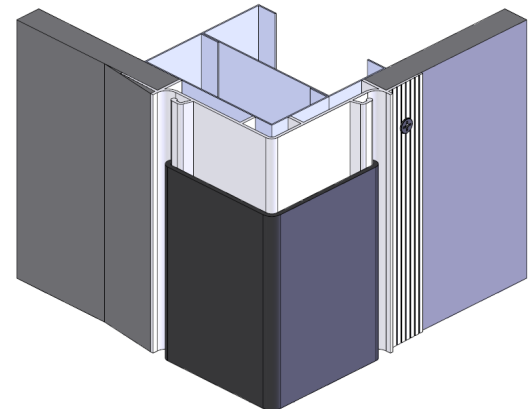
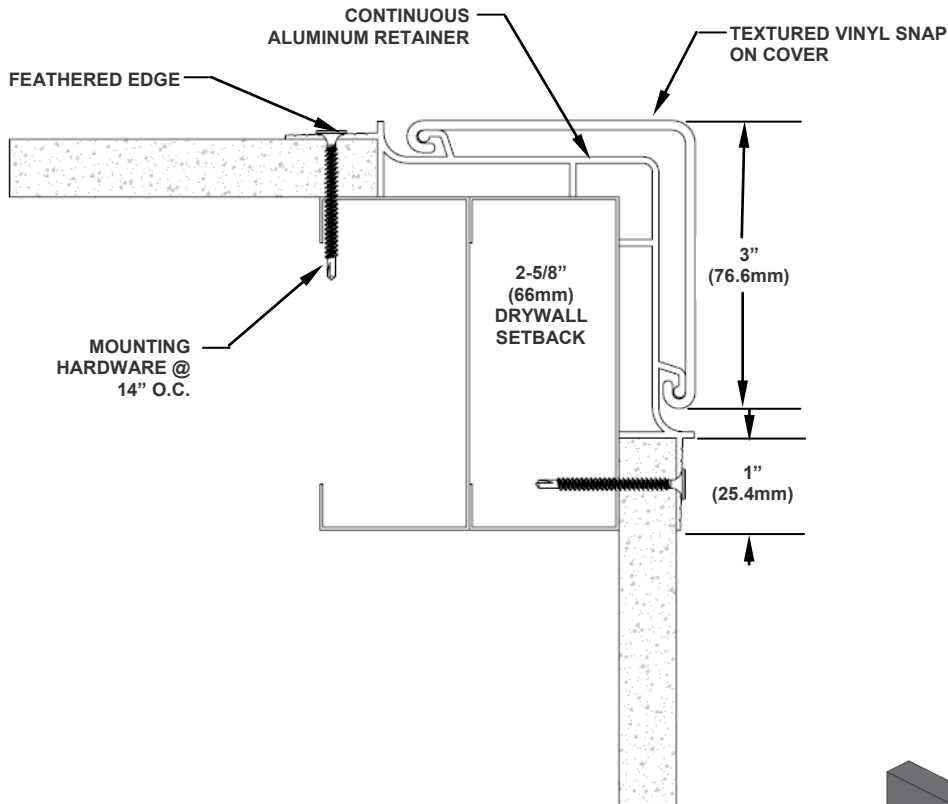
QUANTITY:

Economy Colors

- 11921 Black
- 11924 Sawdust
- 11925 Sand
- 11926 Khaki Brown
- 11927 Gray
- 11929 White
- 11930 Taupe
- 11931 Pale Yellow
- 11932 Ivory
- 11933 Brown

Additional colors available, call Factory for availability, lead time, and possible set up charges.

Full Length Units have retainers and covers that dimensioned to go from the floor to 1" above the ceiling height. The cover can be cut at the bottom to accommodate wall base height.



Installation

Flush Mount Corner Guard Systems: Attach aluminum retainer to the wall, apply joint compound to feather edge, snap on vinyl cover. Field trimming may be required to obtain exact desired height.

CUSTOMER:

PROJECT:

LOCATION:

ARCHITECT

WX5-3FMCG REVISED: 10/1/2015



wallprotex™

3750 Ohio Avenue
 St. Charles, IL 60174-5438
 Ph: 877-880-8115 Fax: 630-443-8930
 info@wallprotex.com