

# WX22 Series, 4" Bumper Guard with Aluminum Retainer

- Standard Length is 12'.
- Custom lengths are available, all custom cuts have a plus or minus 1/8" tolerance.

QUANTITY:

END CAPS:

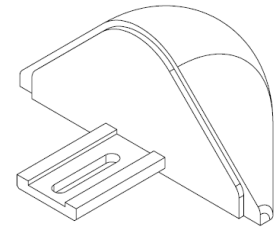
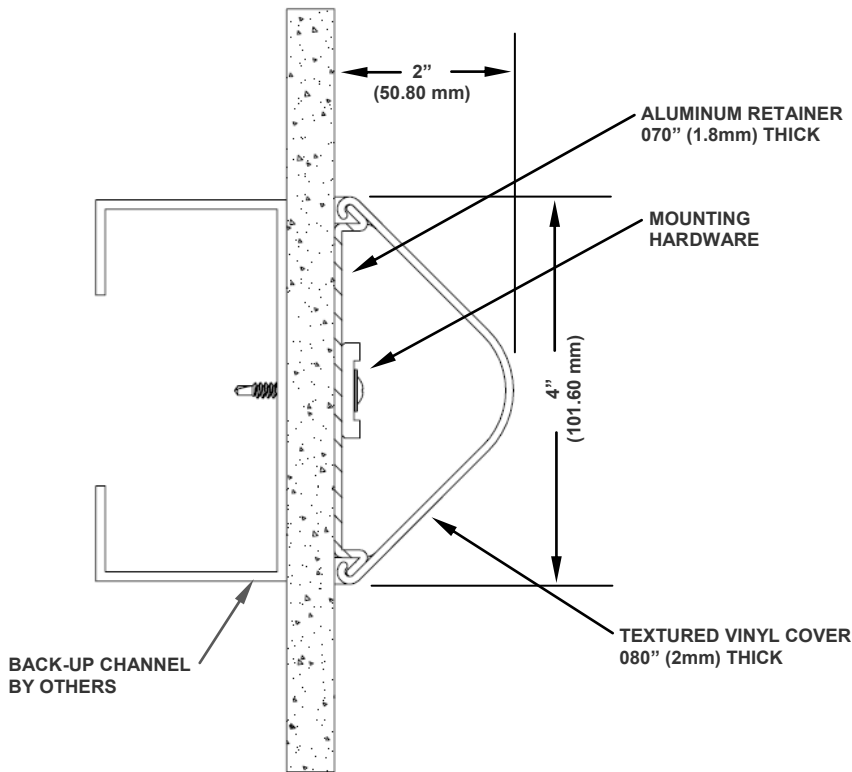
OUTSIDE CORNERS:

COLOR:

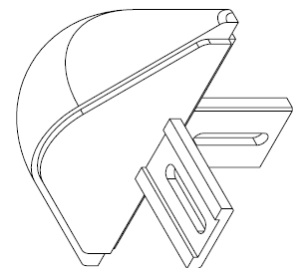
### Economy Colors

- 11921 Black
- 11924 Sawdust
- 11925 Sand
- 11926 Khaki Brown
- 11927 Gray
- 11929 White
- 11930 Taupe
- 11931 Pale Yellow
- 11932 Ivory
- 11933 Brown

*Additional colors available, call Factory for availability, lead time, and possible set up charges.*



**END CAP**



**OUTSIDE CORNER**

### Installation

Bumper Guard Systems: Cut aluminum to desired length, attach end caps or corners to the aluminum, attach aluminum to the wall, then cut cover to desired length and snap onto the aluminum. When a splice occurs, splice the aluminum retainer and the vinyl cover at different locations along the run. The use of back-up channels at stud wall conditions is recommended.

CUSTOMER:

PROJECT:

LOCATION:

ARCHITECT

WX22-4BG REVISED: 12/2/2016



**wallprotex™**

3750 Ohio Avenue  
 St. Charles, IL 60174-5438  
 Ph: 877-880-8115 Fax: 630-443-8930  
[info@wallprotex.com](mailto:info@wallprotex.com)