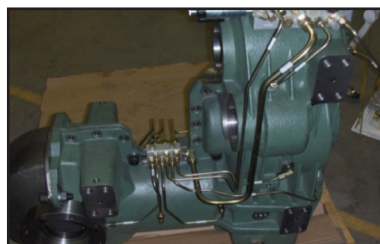
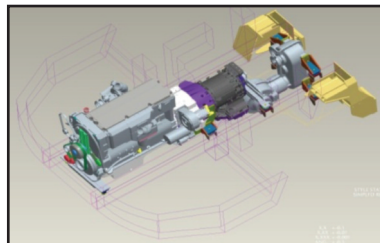


## Tube & Weld

## Transmission Tube Lines

**Problem:** A heavy duty truck manufacturer needed external fluid conveying pressure lines to feed the transmission shown in the pictures below. Steel lines were preferred because of their durability, clean appearance, space saving and ease of installation without clamping.



**Solution:** Customer sent a prototype transmission into Mid-State for evaluation. We designed the tube routing in 3D for approval. The prototype transmission was returned with a set of tubes as shown in pictures below.

**Result:** Our customer can order a single kit of custom bent tube assemblies. They will save time in production to install and set themselves apart in the marketplace due to the benefits described above.

- Beading
- Bending
- Brazing (Torch)
- Brazing (Induction)
- Flaring (JIC & ORFS)
- Machining
- Welding (TIG)
- Welding (Orbital)
- Packaging
- Finishes & Coatings
- System Design
- Testing (Impulse & Burst)
- Testing (Particle Count)

### Engineering support

#### Hydraulic tube assemblies provide:

- ✓ Higher working pressures
- ✓ Simplified assembly
- ✓ Lower labor costs
- ✓ Reduced leak points

**Customer – Heavy Duty Truck Manufacturer**



**Mid-State**  
**1101 Gahanna Parkway**  
**Columbus, OH 43230**  
**Ph. (614) 864-1811**  
**Fx. (614) 864-0435**