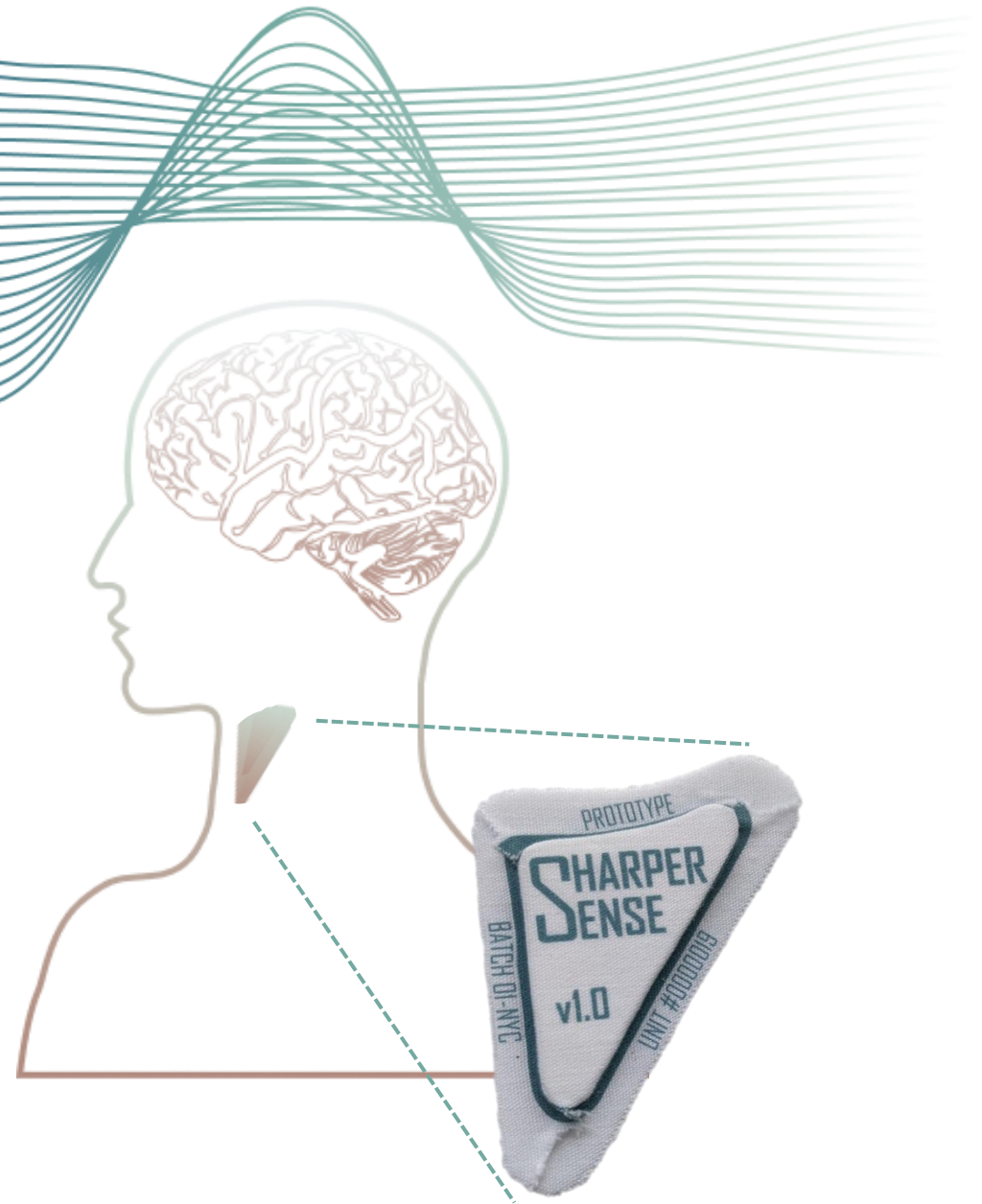


# SHARPER SENSE



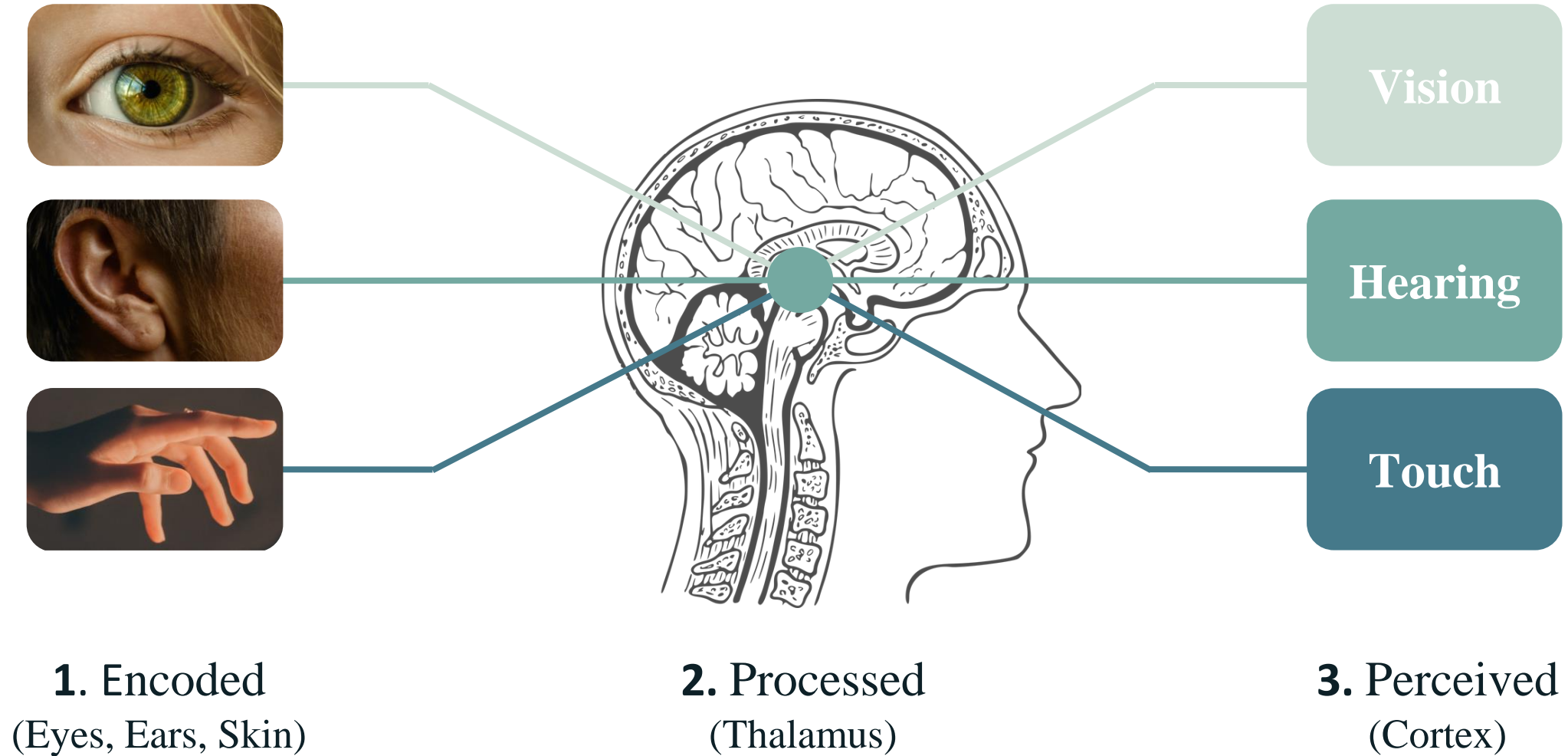
# SHARPER SENSE

Wearable neurotechnology that  
enhances vision, hearing, and touch

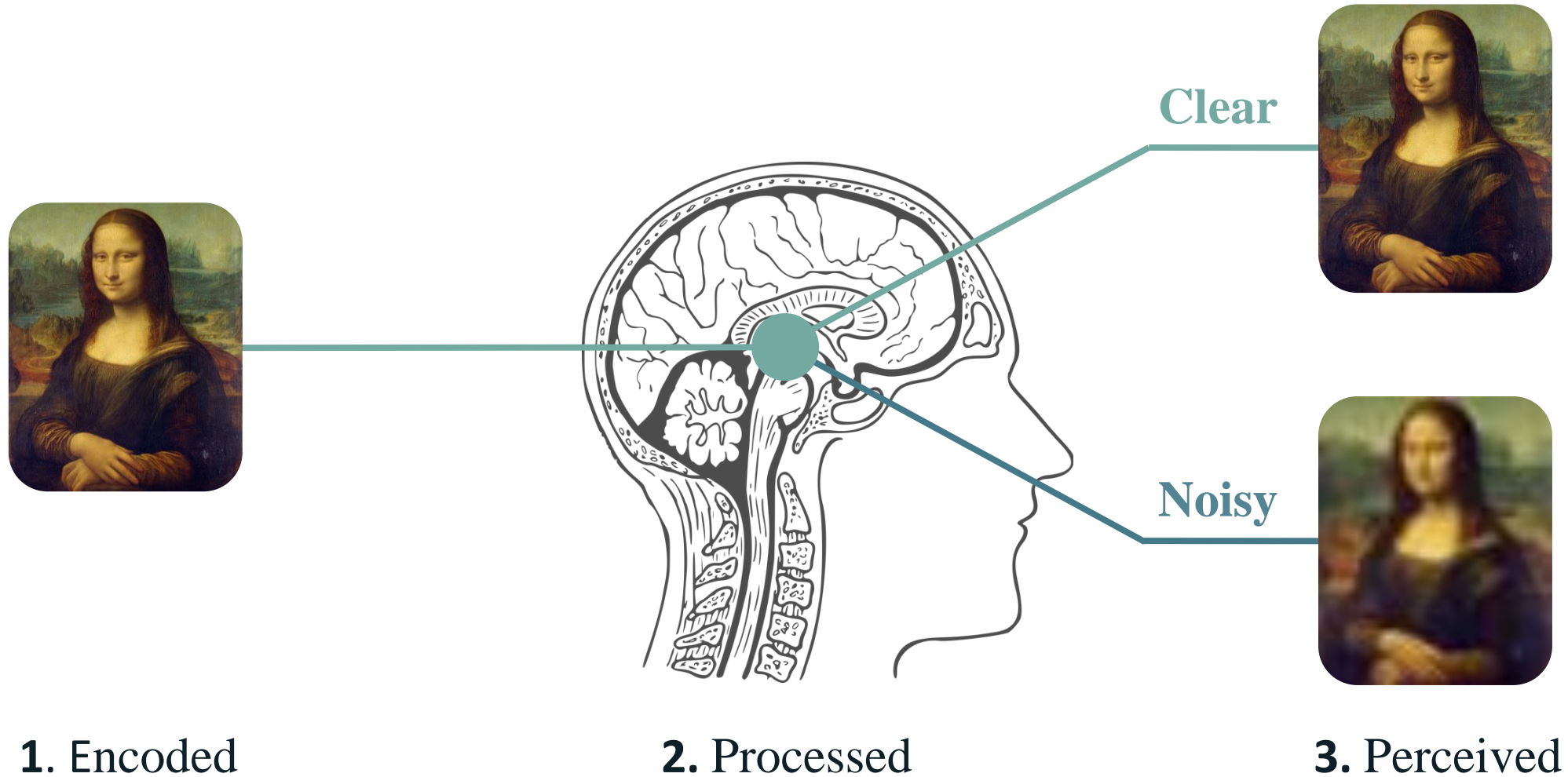


Fatigue, inattention, concussions, aging,  
and neurodisorders all dull your senses

# Sensory information is processed before it's perceived



# Imperfect sensory processing causes dull senses





# Impaired senses hurt performance everywhere



Work



School



Recreation

# Existing methods of improving sensory processing



Stimulants  
unsafe



Devices  
bulky, unnatural



Therapy / Training  
delayed benefit

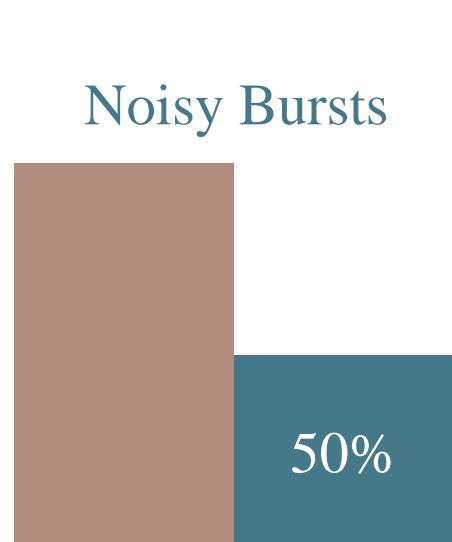


Supplements  
rarely effective



safe, comfortable, instant benefit

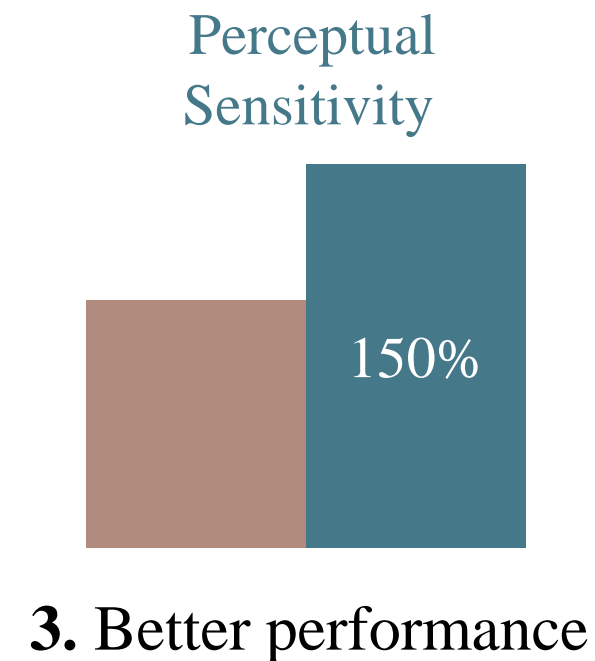
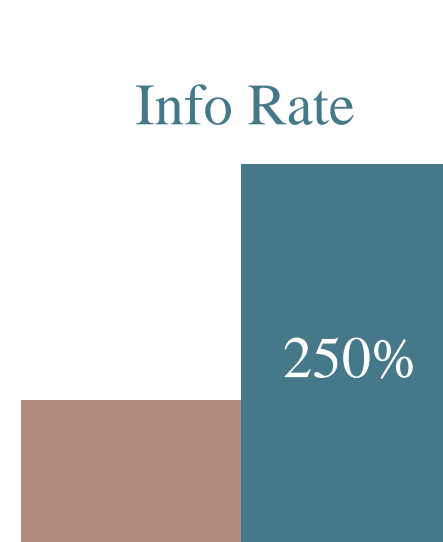




**1. Less noise**



**2. Increased sensory detail and definition**



## Performance Enhancement Applications (over the counter)

Demanding and  
Hazardous Jobs

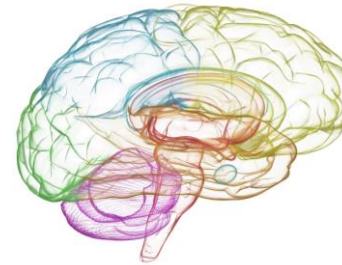


Sports, Musicians,  
Esports, Students



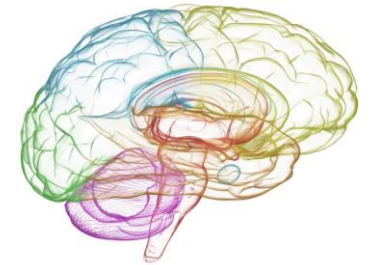
## Clinical Applications (prescription)

Neurodegeneration



Aging related  
Parkinson's  
Multiple sclerosis

Sensory Processing  
Disorders



ADHD  
Autism  
Dyslexia

# Sharper Sense falls within multiple growing markets

Human Augmentation

Sports Tech

Neuromodulation

Wearables

Assistive Devices

We've identified user groups with the most pressing need for Sharper Sense

# Senior Athletes + Sensory Loss





# Shift Workers + Hazardous Jobs





# Fatigued Athletes + Dangerous Sports



# Esports Athletes + Overloaded Senses



# Sharper Sense Development Plan

Testing in Animals

Business Development

Wearable Hardware Development

Internal Pilot Clinical Studies

External Clinical Trials

Proof of Concept  
in Animals★

Proof of Concept  
in Humans★

Consumer Product  
to Market★

Clinical Product  
Clearance★

2018 2019 2020 2021 2022 2023 2024

Academic Funding (NIH, NSF, DARPA)

Founder  
Founded

Competitions,  
Accelerators  
(\$65K)

Seed Funding  
(\$400K)

Series A  
(\$2-5M)



# We are quickly attracting support and recognition

---

## Accelerators:



## Incubators:



## Competitions:





Scientific  
Advisor

Management

Business Advisors



Professor Jason Carmel

Charles Rodenkirch, PhD  
CEO and President

Professor Qi Wang  
Founder

John Sullivan, MBA

Laurence Birch, MBA

Linh Le

Clinical neural  
stimulation

Neuroscience, electrical engineering,  
tech transfer, entrepreneurship

Wearables, healthtech, venture capital, business  
development, audiology, clinical trials

The logo for SharperSense features the company name in a bold, dark blue, sans-serif font. The word 'SHARPER' is on the top line and 'SENSE' is on the bottom line. The letters are partially overlaid by a series of thin, wavy lines that flow from left to right. These lines are in shades of blue and green, with some lines crossing each other to create a sense of depth and movement.

# SHARPER SENSE

**President:** Charles Rodenkirch, PhD

**Email:** Charles@SharperSense.com

**Phone:** (646) 470-3040

**Website:** [www.SharperSense.com](http://www.SharperSense.com)