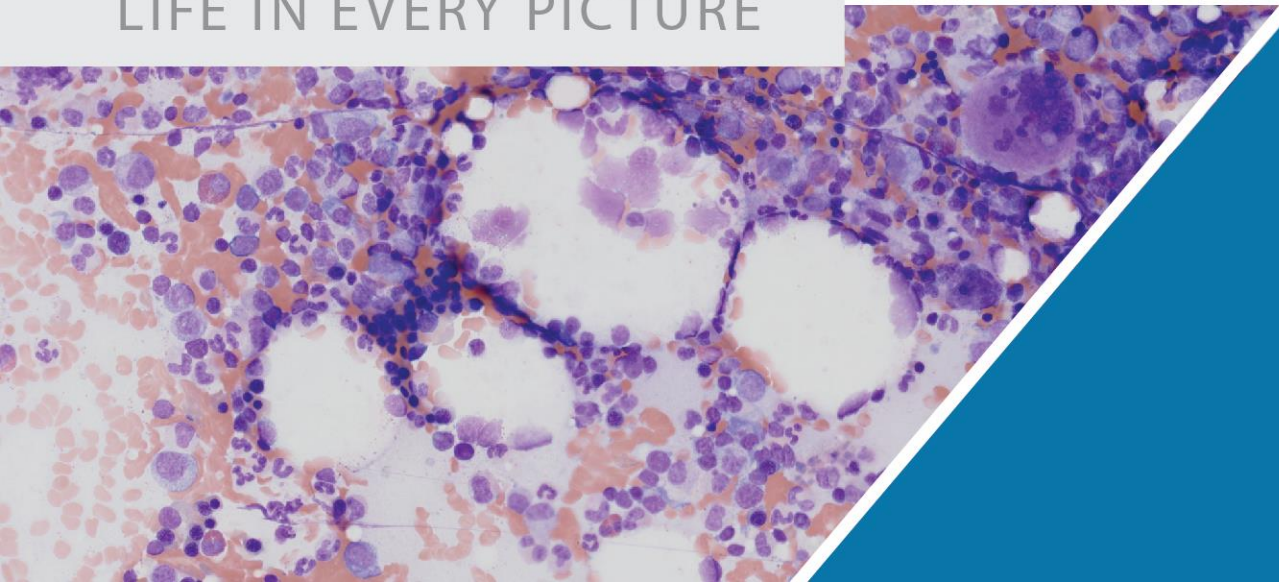




LIFE IN EVERY PICTURE



Kenneth To, PhD, MBA
Chief Executive Officer

kennethto@viewsiq.com

There is a large and growing need for access to pathology

- 45K pathologists serving 350K hospitals in major markets
- Between 2007-2017, the number of pathologists in the US decreased by 17.5% ¹
- Lack of subspecialty expertise in remote hospitals
- Remote pathology today:
 - Physical shipment of slides, or
 - Pathologist travels to remote site
- Greater access to pathologists leads to improved patient outcomes and revenue in for-profit settings
- Represents a total addressable market of \$4.4B ²



¹ [Metter et al \(2019\) Trends in the US and Canadian Pathologist Workforces From 2007 to 2017. JAMA Netw Open 2\(5\):e194337](#)

² Source: [Allied Market Research](#), [Precedence Research](#), and company analysis

Going Digital Addresses This Lack of Access, and Panoptiq is the Key to Unlocking AI-Driven Image Analysis



- ✓ Uses existing microscope and camera
- ✓ Patented software stitches and transmits in real time
- ✓ Easy and inexpensive to install – can be done virtually
- ✓ Built-in tools for annotating and collaborating
- ✓ Live-stream allows for real-time remote consults during surgery
- ✓ Digitization is the key to unlocking AI-driven image analysis
- ✓ Use as diagnostic aid requires no regulatory approval



Going Digital Addresses This Lack of Access, and Panoptiq is the Key to Unlocking AI-Driven Image Analysis



Panoptiq: <https://youtu.be/LvKaKKFEF2A>



Panoptiq Is The Only Patented Software That Enables Remote Pathology, Live-Streamed Quickly and Cost-Effectively



Mikrosan

Leica

3D Histech

Platform	Software	Hardware	Hardware	Hardware
Integrates with existing microscope workflow easily	✓	✗	✗	✗
Embedded high-magnification scans up to 100X	✓	✗	✗	✗
Captures full complexity of 3D microscope sample	✓	✓	✗	✗
Live-stream for remote time-sensitive use cases	✓	✓	✗	✗
Manageable and shareable file sizes	✓	✗	✗	✗
Retail pricing	\$5K/yr SaaS	\$25K-100K One-Time	\$50K-250K One-Time	\$30K-100K One-Time



30+ Active Top-Tier Customers Using Panoptiq Today, Targeted for the Remote Hospital Setting

“I’ve never been able to attain better image quality and focal detail than with Panoptiq. The fluidity of focus control and ease of operation with Panoptiq is unparalleled.”

Dr. Katsushige Yamashiro, MD, PhD
Chief, Division of Diagnostic Pathology
Nikko Memorial Hospital & Hokkaido Cancer Center



Geisinger
13 site hospital network

UCLA Health
200 site hospital network



Management Team with Deep Domain Experience and Functional Expertise



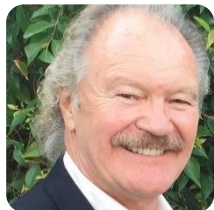
Kenneth To, PhD, MBA
Chief Executive Officer
15+ years serial entrepreneur

- Medical affairs, marketing, product management
- Deep scientific domain knowledge
- Eli Lilly & Co., Stemcell Technologies, Wax-it Histology Services (Founder)



George Hennen, MBA, PMP
VP Product Management
15+ years commercializing products

- R&D strategy, product development, monetization, analytics
- Cisco, GE Healthcare, Volvo, NASA



Keith Jalbert, BBA
Chief Commercial Officer
30+ years sales and marketing executive

- Sales strategy, execution, directly responsible for \$1.6B across 120 sales representatives
- Synnex, Smith Kline, Baxter, Novartis



Rafay Azhar, MBBS, FRCPath (UK)
Director of Medical Affairs
20+ years anatomical pathologist

- Expertise in cytopathology, gastrointestinal and liver pathology
- Pathologist and Director of Digital Pathology, Singapore General Hospital
- Adjunct Professor at University of Ottawa