

Vital Signs

thank you for your ongoing support



Our Voice

MEDIA

NZMA Chair, Dr Kate Baddock talked with Local Matters in Northland on euthanasia and Radio NZ on the Budget and at the time of writing these have not aired.

NZMA GPC Chair, Dr Jan White talked with [TV One](#) on the need for more investment especially in relation to GP shortages and [NZ Doctor on the Budget](#) and what that means. Newshub also talked with Jan on [self harm](#) and the need for investment in mental health and with NZMA Deputy Chair Professor Harvey White on the Budget.

DIARY

NZMA Chair, Dr Kate Baddock and NZMA CEO, Lesley Clarke attended the Australian Medical Association National Conference in Brisbane Australia - see below.

Lesley and NZMA Communications Manager, Diana Wolken met with the Director of Workforce Services at TAS and RMO lead.

Lesley attended the prebudget 'lockup' in the Beehive.

NZMA MEDIA RELEASE AND WELLBEING BUDGET

The New Zealand Medical Association welcomes New Zealand's first Wellbeing Budget which will improve the lives of families most in need. In particular we welcome the investment of \$1.9 Billion in Mental Health and Addiction and the new frontline service for mental health.

"Having trained mental health workers in our doctors' clinics, iwi health providers and other health services will make a positive difference in all our communities and means we can tailor to the needs of the individual and the whānau," says Dr Jan White, Chair of the NZMA GP Council.

Here is a [link](#) to all NZMA media releases.



AMA NATIONAL CONFERENCE 2019

Attending the Australian Medical Association National Conference gave us the opportunity to participate in the discussions on the key issues facing our colleagues 'across the ditch'.

Key issues included aged care, artificial intelligence, mental health and the medical workforce. An issue that is gaining attention is Doctor's Health and making it a priority that doctors can and should look after their own health and the ongoing barriers to care.

Globally the World Health Assembly has made the decision to classify work related burnout as a problem that influences health status and to include it in the new version of the international code of diseases.



Left: NZMA CEO Lesley Clarke, NZMA Chair Kate Baddock and AMA President Tony Bartone.

Right: Previous AMA President Andrew Pesce, Kate Baddock and Lesley Clarke



YOUR FEEDBACK WANTED X2

1. Climate Change Response (Zero Carbon) Amendment Bill

The Parliamentary Environment Committee has called for submissions on the [Climate Change Response \(Zero Carbon\) Amendment Bill](#).

The Bill's purpose is to provide a framework by which New Zealand can develop and implement clear and stable climate change policies that contribute to the global effort under the Paris Agreement. In July 2018, the NZMA made a [submission](#) on the discussion document that preceded the development of this Bill.

To help inform our response to the Bill, could you please provide your feedback to Policy Manager [Sanji Gunasekara](#) by close of play **Monday 24 June**.

2. MCNZ Cultural competence, partnership & health equity: consultation

As part of its work to support doctors to improve cultural competence, the Medical Council has reviewed and updated the following two statements in partnership with Te ORA:

- [Statement on cultural competence and the provision of culturally-safe care](#)
- [Statement on Achieving best health outcomes for Māori: a resource](#)

Council is now seeking responses to the following specific questions:

Draft Statement on cultural competence and the provision of culturally-safe care

1. Do you agree with the proposed definition of cultural competence (in paragraph 14 of the draft revised statement)? Do you have any suggestions on how the draft definition could be improved?
2. Paragraph 15 of the statement specifically outlines the cultural competence standards Council expects of doctors. Do you agree with the proposed standards? What changes (if any) do you suggest could improve these draft standards?
3. Please provide any feedback about the draft Statement on cultural competence and the provision of culturally-safe care that you think Council should consider.

Draft Statement on achieving best health outcomes for Māori: a resource

1. Paragraph 27 outlines how doctors and healthcare organisations can support the achievement of best health outcomes for Māori. Do you think this adequately captures the key points that should be included? What changes (if any) do you suggest could improve this guidance?
2. Please provide any other feedback about the draft Achieving best health outcomes for Māori: a resource that you think Council should consider.

To help inform our response, please provide your feedback on the [consultation documents](#), including responses to the above questions where relevant, to Policy Manager [Sanji Gunasekara](#) by close of play **Monday 24 June**.



WORLD MEDICAL ASSOCIATION WELCOMES DECISION ON BURNOUT

The World Medical Association has given a warm welcome to the decision by the [World Health Assembly](#) to classify work related burnout as a problem that influences health status and to include it in the new version of the international code of diseases.

WMA President Dr. Leonid Eidelman said: "For too long burnout among physicians has been largely ignored. Emotionally exhausted physicians are a danger to patients and a danger to themselves. The cost in terms of human lives and money is appalling.

"The number of suicides among doctors resulting from burnout is a scandal and I hope that the WHO's new classification will shine a spotlight on this disgraceful situation."



GP CME 2019 - SCAM ALERT

It has come to our attention that there may be some scam emails circulating for the Rotorua GP CME 2019 meeting.

The content states:

I am following up to confirm, if you are interested acquiring the attendee list.

*Rotorua General Practice Conference & Medical Exhibition 2019
Rotorua, New Zealand
20-23 Jun 2019
Counts: 2,500*

Let me know your thoughts so that I can send cost & additional information.

We believe these not to be genuine, as the event organiser would not share this data.

Should you receive an email such as this please do not respond.



DEADLINE OF 1 JULY NEARS FOR CHILDREN'S ACT WORKER SAFETY CHECKS

The Children's Act 2014 (formerly the Vulnerable Children Act 2014) sets requirements for all 'children's workers' to pass an appropriate check of their suitability to work with children and young people aged under 18.

Anyone who is a children's worker who has not already been checked will need to have passed a check by the legislated deadline of 1 July 2019. Those employing or engaging children's workers are responsible for making sure their staff have passed the appropriate checks.

There's more information on the [MoH website](#) including about who needs to be checked and third-party safety checking providers: [Children's worker safety checking and child protection policies](#)



NOEL LEEMING FRIENDS & FAMILY DAY - SAVE THE DATES

Noel Leeming is hosting an exclusive sale for friends and family of NZMA members.

Let your friends and family know and be sure to make the most of these offers from **10 June - 23 June**. To take advantage of these offers, head in-store and [present this flyer](#) either printed or on your phone.

As an NZMA member benefit don't forget to show your NZMA membership card when making Noel Leeming purchases to receive your member discount all year round.



ATTENTION

CHRISTCHURCH/CANTERBURY RETIRED NZMA MEMBERS

Are you interested in meeting socially for 1 hour once a month prior to attending a Friday Christchurch Hospital Grand Round?

If you are, please contact [Dr Alastair Wilson](#) or meet at **11am Friday 5 July** in the Medici Café, 1st Floor, Christchurch School of Medicine.



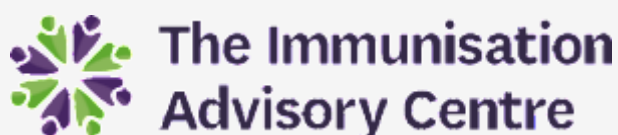
WORLD SMOKEFREE DAY TODAY

New Zealanders are joining the trend to not smoke or give up smoking.

Positive action around being smokefree is snowballing to create an Aotearoa where being smokefree is the normal way of life. Having fewer people who smoke around you, and having the smokefree attitude continuously reinforced, means it's easier to give up smoking. Crucially, people are also less likely to start using tobacco.

Today, May 31, is World Smokefree Day and is the ideal time to celebrate our country's smokefree successes. We can have a smokefree Aotearoa by 2025 if we work together to help our friends, whānau and workmates become smokefree.

The recent [Digest](#) has an article on Vaping and Smokefree NZ 2025.



FINDINGS FROM THE HEALTH PROVIDERS' SURVEY

Late last year, the Immunisation Advisory Centre sought participation in their survey that asked frontline health care workers what's working, and what's not, in achieving optimal immunisation coverage in New Zealand/Aotearoa.

Four inter-related key themes recurred throughout the survey responses: access; health literacy and awareness; engagement, whakawhanaunga/relationship building and trust; and opportunistic vaccination.

Please see attached the [summary of findings](#).



Te Kaunihera
Rata o
Aotearoa

Medical
Council of
New Zealand

MEDICAL COUNCIL'S NEW WEBSITE LAUNCHES

The Medical Council have launched their new website at www.mcnz.org.nz.

Their main goals with this new site were to make it easier to find what you are looking for, and once you've found it, that it is up to date and easy to read. They've also now made the site compatible with mobile devices so you can access the information you need anytime from anywhere.

Quote of the week

Unless we remember we cannot understand
E. M. Forster

CLASSIFIED ADS and situations vacant

NZMA offers members free classifieds and vacancy advertisements.

Check out NZMJ website's [Vacancies page](#) and you may just find your dream opportunity.

Latest vacancies include:

- [General Practitioner | Auckland \(Closes 1 July 2019\)](#)
- [Consultant Psychiatrist - Child and Adolescent Mental Health Services | Wellington \(Closes 31 May 2019\)](#)
- [Consultant Psychiatrist - Kapiti Community Mental Health Team | Kapiti \(Closes 31 May 2019\)](#)
- [General Practitioner | Auckland \(Closes 1 June 2019\)](#)
- [Associate GP wanted | New Lynn, Auckland \(Closes 31 May 2019\)](#)
- [VR GPs | Australia \(Closes 31 May 2019\)](#)
- [Consultant General Surgeon | New Plymouth \(Closes 31 May 2019\)](#)

Members advertise for free - [classifieds](#) and/or vacancies [via Hotline](#).



UPCOMING EVENTS

View our upcoming health sector events - go to the [NZMA events page on our website](#) for the full list.

2019 REHABILITATION MEDICINE SOCIETY OF AUSTRALIA AND NEW ZEALAND

20-23 October 2019, Adelaide, Australia

Rehabilitation Medicine Society of Australia and New Zealand's (RMSANZ) 4th Annual Scientific Meeting will be held in Adelaide Sunday 20 - Wednesday 23 October.

The theme for the conference is *Contemporary Rehabilitation: Knowledge Translation, Collaboration and Community Engagement*.

This theme speaks to their unique strengths while also highlighting exciting areas of future growth. The program aims to be relevant to a wide breadth of rehabilitation practice.

RMSANZ hope to provide a forum for Rehabilitation Physicians and colleagues from allied health, nursing and related medical specialties to share knowledge, skills and experiences, to network, and to enjoy South Australia.

Visit the [RMSANZ](#) website for more information.

INJURY 2019

8 August 2019, Auckland

INJURY 2019 will be Thursday 8th August at the usual venue, Eden Park, Auckland, NZ.

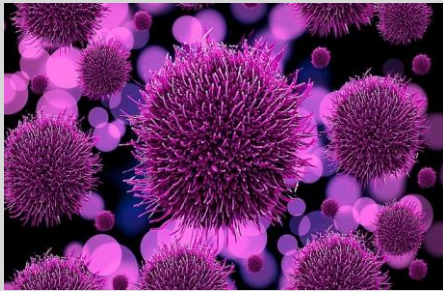
In response to attendee feedback the international speakers include Rebekah Ogilvie from Canberra, Australia. Rebekah's presentations last year resonated with attendees and I am looking forward to some further challenging and informative talks. Our other international speaker is Professor Belinda Gabbe from Monash in Melbourne, Australia. Belinda has co-authored many of the landmark papers that have come out of the Victorian State Trauma System and many of the findings have direct relevance to us in NZ. As usual there will be a range of local speakers as well as the best of the submitted abstracts.

Professor Ian Civil
Director, Trauma Services, Auckland City Hospital
Convenor, INJURY 2019

[Registrations are open on the Injury 2019 website.](#)



MEMBER BENEFITS



NO COST ADVERTISING

NZMA offers members the facility to place vacancies for personnel in the NZMJ and Vital Signs.

Reach the medical professionals you want and take advantage of this facility as many do week on week.

MEDICUS INDEMNITY INSURANCE

Medicus is a medical indemnity insurance option for New Zealand practitioners. It is an independent 'not-for-profit' risk management group established by New Zealand registered medical practitioners to assist members of the New Zealand medical profession to manage the risks associated with professional practice.

Medicus offers insurance, risk management advice and free medico-legal counselling. It uses the services of insurance broker Aon New Zealand to obtain highly rated commercially underwritten insurance for its members.

NZMA members receive a **10% discount** on annual premium charges.

For more information including application forms please go to the [Medicus website](#).

NZMA Advisory Service

EMPLOYMENT RELATIONS ACT - UNIONS/GOOD FAITH

The Employment Relations Act is based around the concept of 'good faith', which is mutual trust, confidence and fair trading between employees, unions and employers. The NZMA Advisory Service has member resources that cover the concept of good faith and the role of unions under the ERA.

These flyers are available for members to download from the [NZMA advisory service](#) on our website. You must be logged in to view and/or download these flyers, or you can email [NZMA](#) for copies.

Vital Signs is your weekly bulletin about the NZMA and 'what's hot'.

New Zealand Medical Association
Level 5 NZMA House, 26 The Terrace
Wellington, Wellington 6140
New Zealand

[Add us to your address book](#)

| Ph (04) 472 4741 | Fax (04) 471 0838

Email: communications@nzma.org.nz | Visit our website: www.nzma.org.nz