

Vital Signs

Thank you for your support



Our Voice

Media

NZMA Chair Kate Baddock talked with [TV3 on the coronavirus and impact on New Zealand](#) and the crisis that already exists in primary care.

[NZMA General Practitioner Council Chair, Jan White](#) spoke with NZ Doctor on the ongoing COVID19 situation and the anger, frustration and concern of primary care at the front line - protecting health workers is one of three priorities outlined by WHO.

Vote now

[NZMA Elections - Your leadership Our advocacy](#)



2020 NZMA ELECTIONS OPEN - YOUR OPPORTUNITY TO LEAD AND ADVOCATE FOR OUR PROFESSION

Your leadership | Our advocacy

We are only as strong as our collective voice. Be part of our leadership where change begins and decisions are made. NZMA is a strong advocate on medico-political issues, with a strategic programme of advocacy with politicians and officials across the board.

We provide leadership for the medical profession. We promote professional ethics, unity and values for our profession and for the health of all New Zealanders.

a) NZMA Board - two positions

b) Doctors-in-Training Council - four positions

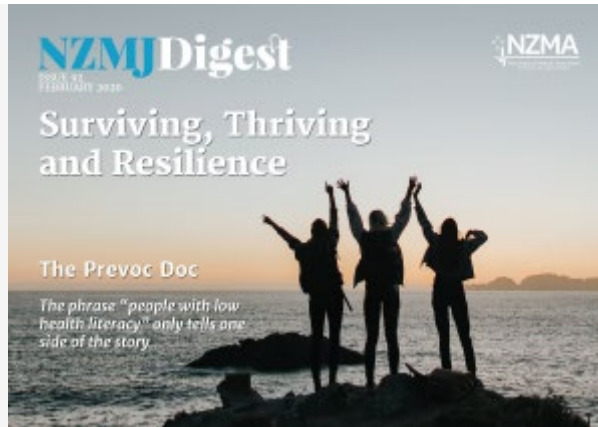
c) Specialist Council - one position

Download the [nomination form here](#), fill in and email to nzma@nzma.org.nz

More [information here](#).

Your current leadership information [here](#).

- *All nominations must have the endorsement of the nominee.*
- Nominations close **midnight Friday 13 March**.
- If more nominations are received than positions available, an election will be held.



LATEST DIGEST NOW OUT

Read about your colleague's experiences and insights and topics that matter large and small in our day to day lives.

NZMA Chair Kate Baddock on ['surviving, thriving and resilience'](#).

From the front line - DiTC Chair, Katelyn Costello on 'The Prevoc Doc'.

NZMA GP Council Chair [Jan White](#) on the General Election and primary care and more...

[Fare for Rare](#) - launching at Parliament today Friday 28 February

MFAS - [case studies and financial advice](#) for 2020

[People with low health literacy](#) - tells only one side of the story

Report finds equity gap in NZ Surgical Systems for Māori - [HQSC](#)

[NZMA submissions](#) - Folic Acid Fortification, Mental Health & Wellbeing Commission Bill, Budget Policy Statement 2020 and the Arms Legislation Bill to name a few...



2019 NZMA & NZMSA TEACHING AWARDS- SECOND ROUND OPEN

The second round of nominations for the 2019 NZMA & NZMSA Teaching Awards has opened. For more detail on the Awards themselves [click here](#).

NZMA and NZMSA are looking for examples of excellent teaching displayed by the shortlisted finalists to help the judging panel make their final decision as to whom receives each award.

If you know of, or have worked with any of the below shortlisted candidates and can provide relevant information to help the judges in their decision making then please fill in the feedback forms.

You can read the candidate profiles by clicking on the links below and then make your nomination and give your feedback to support the panel in making their decision.

RMO Shortlist:

Bryan Bae; Thomas Clendon; Diana Fieldwick; Jamie Harvey; and Jonathan Lee

SMO Shortlist:

Bronwyn Copeland; Rowan French; Marta Kroo; Kyle Perrin and Tom Thomson

Nominations close midnight Sunday 22 March 2020:

[RMO New Zealand Medical Teaching Award finalist profiles](#) | Nominate [here](#)

[SMO New Zealand Medical Teaching Award finalist profiles](#) | Nominate [here](#)



MEASLES UPDATE FROM NATIONAL CO-ORDINATION CENTRE (NCC)

Measles outbreak response

The National Coordination Centre (NCC) thanks all DHBs, PHOs, general practices and healthcare staff for the support and ongoing efforts to respond to the national measles outbreak.

The outbreak is ongoing but has tapered off significantly, with just seven cases of measles in January 2020 - emergency response to this outbreak has stepped down and the situation monitored.

Please ensure that all measles cases are entered onto EpiSurv and any new outbreaks are reported to notifycommndiseases@health.govt.nz as outlined in the Ministry's *Communicable Disease Control Manual*, available on the Ministry's [website](#).

Next steps to increase measles immunisation rates

There is now enough MMR vaccine available to vaccinate more broadly.

Under PHARMAC's Pharmaceutical Schedule, a maximum of two doses can be given to any person meeting the following criteria:

1. For primary vaccination in children
2. Revaccination following immunosuppression
3. Any individual susceptible to measles, mumps or rubella (which includes unvaccinated adults under age 50)
4. A maximum of three doses for children who have had their first dose prior to 12 months.

NCC asks immunisation service providers to now focus on ensuring infants receive their MMR vaccinations on time and improving the immunity of 5-14 year olds. This should include the active recall of all children in this age range who have not had any MMR vaccination.

Please also ensure that all MMR doses administered are recorded on the National Immunisation Register (NIR), unless the patient specifically requests it not to be recorded. The measles outbreak highlighted the information gap created by the lack of national records for people aged 14 and over and not automatically enrolled on the NIR.

National measles immunisation campaign

A new measles immunisation campaign is scheduled to commence in May 2020. This will be targeted at young adults, aged 15-29, with a focus on Māori and Pacific individuals. PHARMAC has sourced more than 350,000 additional MMR vaccines for the campaign; the vaccines are scheduled to arrive by the end of April 2020. The Ministry will work with DHBs to develop local plans for vaccinating this group to ensure the campaign reaches young adults in their communities.

MMRO changes in Auckland and beyond

In response to the reduction in case numbers, Auckland Regional Public Health, the three Auckland DHBs and the Ministry of Health have agreed to discontinue MMRO for babies aged six to 11 months who live in Auckland or who are travelling to Auckland. The first dose of MMR (MMR1) will continue to be administered at 12 months in the Auckland region.

As part of Immunisation Schedule changes in October 2020, the first dose of MMR will move to be administered at 12 months of age across the rest of New Zealand. At the

same time, the second dose of MMR will move to be administered at 15 months of age, replacing the current MMR immunisation event at 4 years of age. Further information will follow about this and other changes to the schedule.



VOCATIONAL TRAINEE WANTED TO BE PART OF THE WORK OF THE MEDICAL COUNCIL OF NEW ZEALAND

The Medical Council of New Zealand (Council) is currently seeking to appoint a vocational trainee to join its Education Committee.

The ideal candidate will be enrolled and actively participating in a vocational training programme, have an interest in how medical education in New Zealand is provided during vocational training and will be able to contribute to ways that this can be improved.

They will be able to participate constructively in discussion regarding education matters. Ideally, they would also have an understanding of Council's role and function as a medical regulator.

Interviews for the vacancies are likely to take place in early April 2020 via videoconference.

Please email your expression of interest to NZMA CEO Lesley Clarke.

Quote of the week

Good health and good sense are two of life's greatest blessings.

Publius Syrus

CLASSIFIED ADS and situations vacant

NZMA offers members free classifieds and vacancy advertisements.

Check out the NZMJ website's Vacancies page and you may just find your dream opportunity.

Latest vacancies and classifieds include the following - just click on the vacancy/classified ad to be taken to the full ad:

Vacancies

- [Associate GP with a view - Raumati South, Greater Wellington \(closes 31 March 2020\)](#)
- [Intensivist | Hawke's Bay \(Closes 14 March 2020\)](#)
- [Dr Dundee | Katherine Northern Territory - \(Closes 14 March 2020\)](#)
- [Specialist Physician for Older People | Northland DHB \(Closes 6 March\)](#)
- [GP Required | Te Puke \(Closes 6 March 2020\)](#)
- [Public Health Physician Dunedin | Otago \(Closes 6 March\)](#)
- [Palliative Care Physician | Auckland \(Closes 29 February 2020\)](#)
- [General Practitioner 1/10th \(neg\) | Auckland \(Closes 21 March\)](#)

Classifieds

- [Auckland General Practice for sale: Central suburbs](#)
- [Solo Rural GP Practice for Sale - Whangarei](#)
- [Practice for sale - Urban Auckland](#)
- [GP partnership for sale - Nelson City](#)
- [Practice for Sale in Auckland Medical Centre](#)

Members advertise for free - classifieds and/or vacancies via Hotline.



UPCOMING EVENTS

View our upcoming health sector events - go to the [NZMA events page on our website](#) for the full list.



AUSTRALIA & NEW ZEALAND GENERAL MEDICINE UPDATE 2020

20-22 March 2020

How do you keep your knowledge and skills up to date?

The world of medicine is evolving more rapidly than ever before.

[Click here to learn more and register](#)



WONCA 2020

23rd Apr 2020 - 26th Apr 2020

WONCA is taking place from 23 – 26 April 2020 at the Aotea Centre in Auckland. It will be hosted by the College, in conjunction with the Rural General Practice Network and Te Ohu Rata o Aotearoa - Māori Medical Practitioners Association.

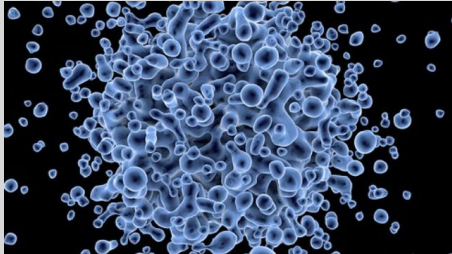
This major primary health care conference is expected to attract more than 1000 delegates, from New Zealand and the Asia Pacific region.

WONCA takes the place of the College's annual Conference for General Practice, and will also include the National Rural Health conference and the Te ORA Hui-ā-Tau and Scientific conference. For information, visit the conference [website](#).



MEMBER

BENEFITS



NZMA MEMBERS NO COST ADVERTISING

NZMA offers members the opportunity to place vacancies for personnel in the NZMJ and Vital Signs free of charge.

Reach the medical professionals you want as many do week on week.



CHERRYTREE

Cherrytree is a unique shopping concept that gives members exclusive access to wholesale prices for almost every conceivable category of product. As an NZMA member, join a FREE membership and receive a 20 point credit towards a premium Gold membership valued at \$200. NZMA members also receive a discounted Cherrytree Gold renewal fee. For more details please contact communications@nzma.org.nz

Member Advisory Service

Parental Leave

The Parental Leave and Employment Protection Act 1987 provides a statutory entitlement of up to 52 weeks' parental leave for the care of a new baby, or where care is undertaken of a child to be adopted. Parental leave is unpaid, and may comprise a component of 'maternity' or 'paternity' leave (for the birth or immediate arrival of the child), plus 'extended' leave (for ongoing care), or it may simply comprise "extended" leave. We have articles available describing obligations, entitlements and suggested forms/agreements that can be used to ensure that this Act is complied with. Government funded paid parental leave is also covered.

These flyers are available for members to download from the [NZMA advisory service](#) on our website. You must be logged in to view and/or download these flyers, or you can email NZMA for copies.

- Information about Parental Leave under the Parental Leave & Employment Protection Act 1987.

- [Notice about entitlement to parental leave.](#)

Vital Signs is your weekly bulletin about the NZMA and 'what's hot'.

[unsubscribe](#) | [update subscription preferences](#)

New Zealand Medical Association
Level 5 NZMA House, 26 The Terrace
Wellington, Wellington 6140
New Zealand

[Add us to your address book](#)

| Ph (04) 472 4741 | Fax (04) 471 0838

Email: communications@nzma.org.nz | Visit our website: www.nzma.org.nz