



FIAT CHRYSLER AUTOMOBILES

# Jeep Renegade MY21:

New engine line-up EU6D Final

New Buzz Model 80th anniversary

EMEA  
REGION



Jeep



# Renegade MY21 – PRODUCT NOVELTIES





## Renegade MY21

### NEW ENGINE E6DFINAL LINE-UP

- Petrol 1.0 MT
- Petrol 1.3 DDCT

### NEW BUZZ MODEL: 80TH ANNIVERSARY

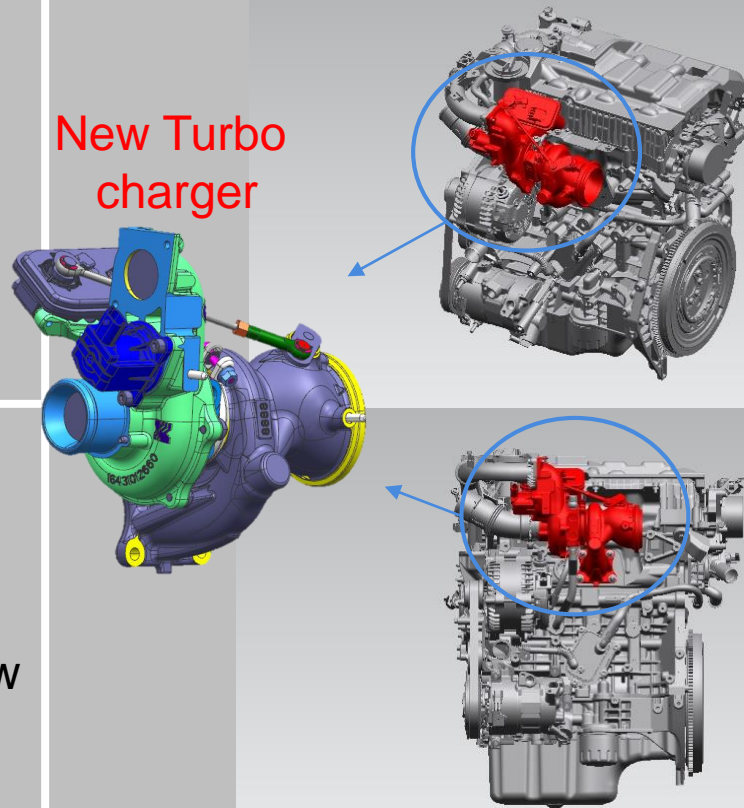
# Petrol 1.3 DDCT 150hp EU6D Final

## Technical description – main features vs EU6d temp

New engine oil 0W20:

- Reduced friction
- Fuel Economy improvement

New Turbo charger:  
(carry over from Compass Application) Designed to improve Low End Torque



## IDLE COASTING

With IDLE COASTING active, the ICE is not connected to the wheels thanks to an automatic action on the clutch:

in this way fuel consumption can be reduced since there is not engine braking.

The potential co2 saving is up to 1gr/km WLTC.

the ICE is still on at idle in order to provide a power supply to all the vehicle's functionalities such as 12V battery recharge and A/C management.

The IDLE COASTING is automatically activated at speeds between 25 and 160km/h and on the TFT is displayed the following icon:



## SPORT MODE

The 1.3 DDCT E6d Final offers a new Sport mode selectable through a dedicated button in front of the gear lever.

The Sport mode changes several vehicle parameters in order to offer a better responsive engine and an increased performance perception. Sport Mode deactivates Idle coasting.



# Sport mode - details

Jeep

Engine

Accelerator  
Pedal

Automatic  
Gearbox

SPORT

Dynamic

High

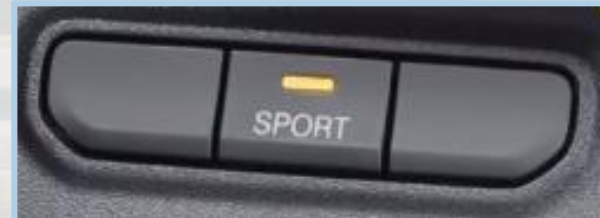
Quick shift

NORMAL

Normal

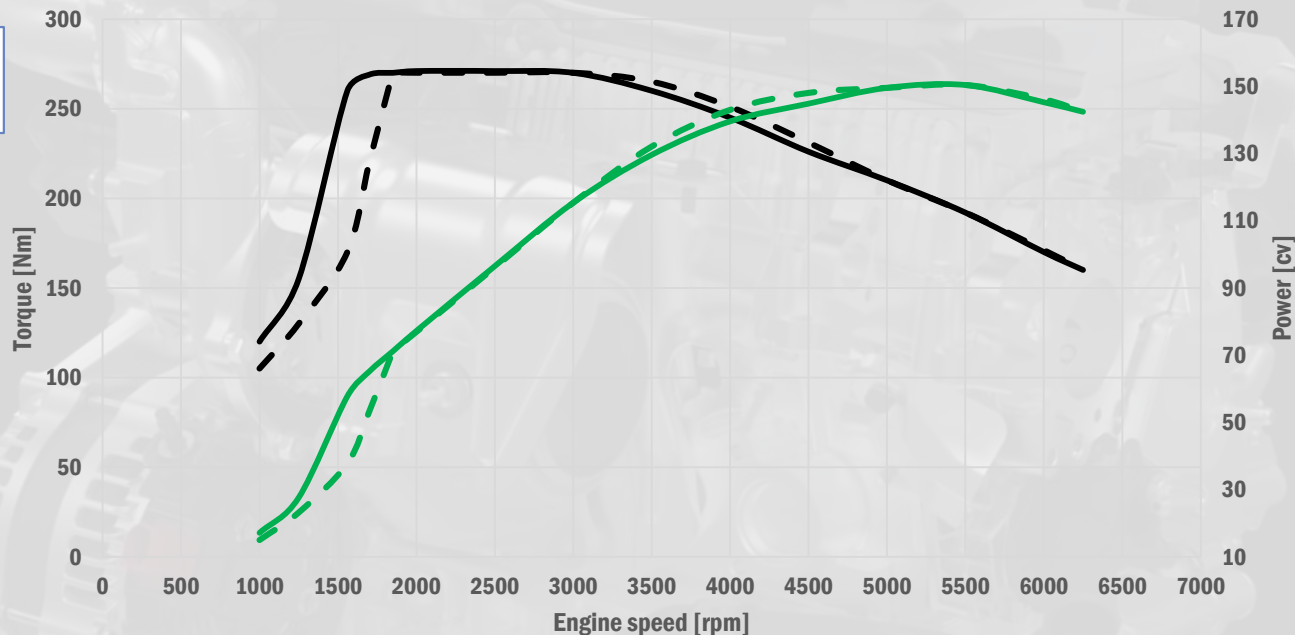
Neutral

Neutral shift





# Petrol 1.3 DDCT 150 hp EU6D Final - Technical description



	1.3 E6D FINAL	1.3 E6D TEMP
POWER [cv]	150 @ 5500rpm	150 @ 5500rpm
TORQUE [Nm]	270 @ 1560rpm	270 @ 1850rpm
V MAX [km/h]	203	196
0/100 [s]	9,8	9,4

Note: 1.0 Turbo T3 MT FWD 120 HP: no dedicate pages, no changes in EU6DFinal

The Active Grille Shutter (opt MDX) is a system that automatically opens and closes a panel applied to the lower grille of the bumper.

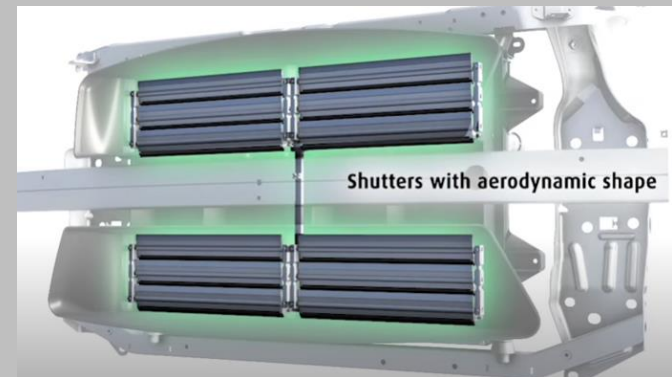
When the system is closed, it improves the aerodynamic efficiency of the vehicle reducing turbulence.

This leads to a significant reduction in fuel consumption and CO2 emissions, while maintaining the ideal temperature for the engine.

When a greater flow of air is needed to cool the powertrain (for example in urban traffic), the panel remains open, while when the engine temperature is low or the air flow is sufficient (for example on the highway), the grid is closed.

AGS is present on all E6D final engines:

- 1.0 T3 MT Gasoline
- 1.3 T4 DDCT Gasoline
- N/A on PHEV





Renegade AGS is positioned on lower part of the bumper, on the main air intake of the vehicle. The potential co2 saving is up to 1gr/km WLTC as average contribution.



# Renegade MY21 – 80<sup>TH</sup> ANNIVERSARY



Anniversary Editions has celebrated Jeep heritage since 25th Anniversary CJ-5 in 1966

1966

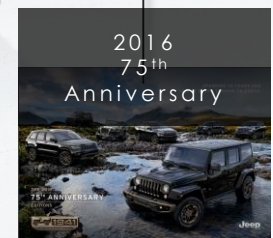
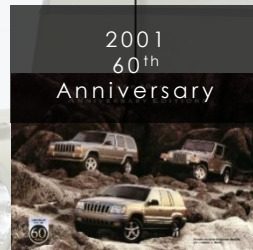
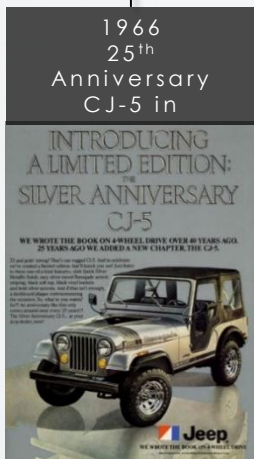
...

2001

2006

2011

2016





# Renegade MY21 80th Buzz Model – Product Configuration



Renegade  
Limited

**BLUE: delta 80<sup>th</sup> vs  
reference Trim**

Powertrains

**1.0 Gas MT FWD**  
**1.3 Gas DDCT FWD**

Radio / Cluster

**8.4" NAV**

Technology

**Full LED Pack**  
Low/ High beam,  
Fog Lights, Rear Lights

## **Parking Pack**

Blind Spot detection with rear  
cross path, Rr parking camera,  
Parallel and perpendicular  
park assist

## **Visibility Pack**

Auto Headlight activation, Rain  
sensor, Auto High Beam,  
Electrochromic rear view  
mirror

Interior

**Interior Theme**  
**8 way Power seats –  
driver and passenger**

## **Function Pack**

Ext rearview mirrors with electric drive, folding and  
defrost, Passive Entry, Keyless Go, reversible and  
height adjustable cargo floor, 40/20/40 rear seat with  
pass through and armrest, Auto folding mirrors,  
window closing/opening via remote control

Exterior

**18" wheels 80<sup>th</sup>**  
**Black tinted**  
**glass**  
**Exterior Theme**

## Buzz model

- Limited base buzz model (Limited trim)
- **Engines availability (EU6DFinal):**
  - 1.0 T3 120hp MT FWD
  - 1.3 T4 150hp DDCT FWD
- **Timing:** December 2020 Commercial Launch (SoP November 2020)
- **Expected mix:** 15% @launch, 8% lifecycle

## Reasons why:

- Honor 80 years of brand global growth and 4x4 leadership with a limited edition series that celebrates and grows Jeep brand pillars
- Reinforce presence in the high-end of the segment
- Further emphasize infotainment technological contents introduced in Model MCA + New style contents with >20% customer advantage target

Buzz model Contents (on top base Limited trim):

### INTERIOR

- VP2 8.4" DAB NAV radio w/ smartphone integration & Uconnect services

### EXTERIOR

- Full LED Pack
- 18" Alloy wheels
- Privacy Glass, Parking Pack, Visibility Pack, Function Pack

### NEW STYLE (1941 theme)

- Badging Granite crystal/Neutral Grey accents (exterior/interior)
- Diamond pattern black cloth with tungsten stitching and 80<sup>th</sup> tag
- Interior High Gloss Black accents
- Logo tag on seats and floor mats
- Key chain w/ customized plaque
- Infotainment splash screen – "Since 1941"

