



SARS-CoV-2 Antigen Rapid Test Kit (Colloidal Gold Immunochromatography)



- Non-invasive sample collection
- Easy to use, no devices required
- Rapid test result within 15mins
- High accuracy
- Cost-efficiency
- Clear result readings



Airport



Hotel



Hospital



Station



Corporation

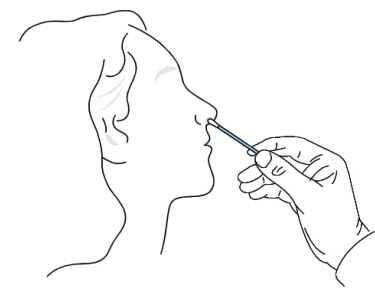


Massive
Screening

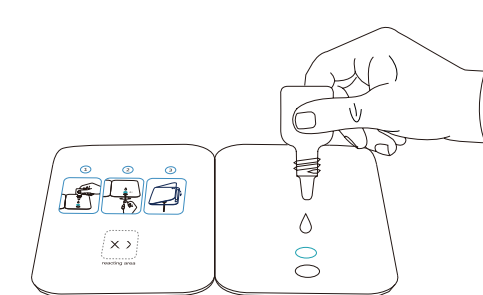


Personal use

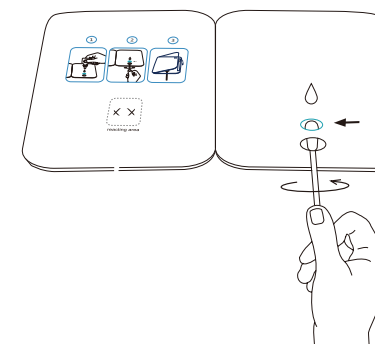
Operation steps



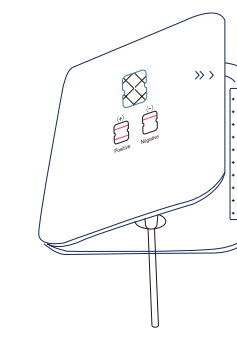
Step1: Collect the swab



Step2: Add 4 drops of buffer to hole A



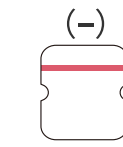
Step3: Insert the sample through hole B to hole A, rotate the swab clockwise first and counterclockwise, twice each.



Step4: Peel off the adhesive, and fold the left side over, wait for 15 minutes.

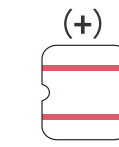
Result Interpretation

Negative



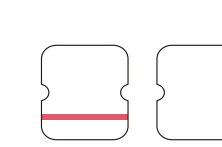
Top line only

Positive



Both bottom line and top line

Invalid



Bottom line only, or no line

LEPU MEDICAL TECHNOLOGY (BEIJING) CO.,LTD

No.37 Chaoqian Rd.,Changping District, Beijing,China
Email: crm@lepu-medical.com



SARS-CoV-2 Antigen Rapid Test Kit (Colloidal Gold Immunochromatography)



Airport



Hotel



Hospital



Station

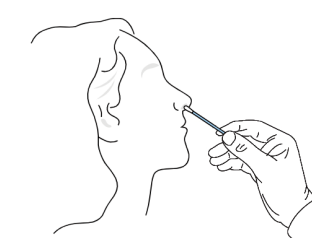


Company

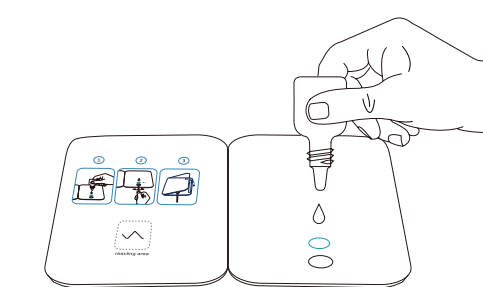


Personal

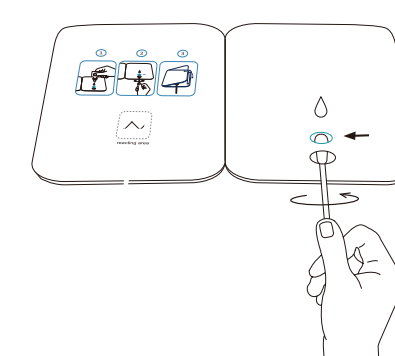
Operation steps



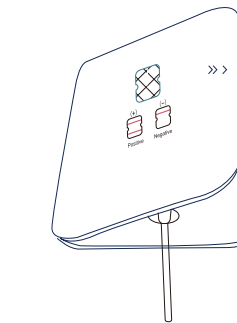
Step1: Collect the swab



Step2: Add 4 drops of buffer to hole A



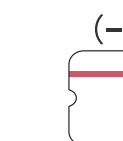
Step3: Insert the sample through hole B to hole A, rotate the swab clockwise first and counterclockwise, twice each.



Step4: Peel off the adhesive, and fold the left side over, wait for 15 minutes.

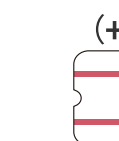
Result Interpretation

Negative



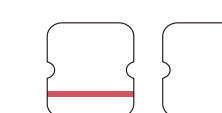
Top line only

Positive



Both bottom line and top line

Invalid



Bottom line only, or no line

LEPU MEDICAL TECHNOLOGY (BEIJING) CO.,LTD

No.37 Chaoqian Rd.,Changping District, Beijing,China
Email: crm@lepu-medical.com