

# HDS-27

## Four-Post Lifts

SKU# 5175162

27,000-lb. Capacity, Heavy-Duty Truck Lift, Extended Ramps

Questions? Contact BendPak's Sales Team

sales@bendpak.com | 1-800-253-2363

Monday - Friday, 7AM to 4:30PM PST

## Construction, Municipal and Commercial Vehicles Welcome

This is where our lifts really step into the next level of lifting. If you need a bigger, better [four-post lift](#) that can handle a 27,000-lb., Class 7 semi-truck, you need the HDS-27. Bigger sheaves and beefier components carry on our legacy of dependability. If your shop services commercial and/or municipal vehicles, a lift of this stature is practically mandatory. Get your hands on this utterly massive truck lift and bring a higher level of service to your garage or shop.



## Choose Extended Length

SKU#	Model	Description
5175164	HDS-27X	Extended Length

## Features

- 27,000-lb. lifting capacity
- Extended length runways available
- Includes 48" extended steel approach ramps
- Supersized 12" diameter cable sheaves
- Stainless steel lifting cables
- Grease nipples
- Single hydraulic under-runway cylinder
- Integrated flow restrictor
- Durable powder coat
- Spring-loaded safety locks
- Second lock system on constant guard
- Fully enclosed lifting cables
- Multiple adjustable height locking positions
- Maintenance-free electric hydraulic power system
- Conveniently positioned operator controls
- 12" x 12" base plates
- Runways feature a durable matte finish
- Optional rolling jacks

Note: An air supply (minimum 30 psi / 3 CFM) is required for the safety-lock mechanisms to disengage. It is solely the responsibility of the end-user to provide, install and maintain the air supply.

Not all BendPak lift models meet the standards as prescribed by ANSI/ALI ALCTV-2017 or ANSI/UL 201. Consult [www.autolift.org](http://www.autolift.org) for a complete list or contact BendPak via [contact@bendpak.com](mailto:contact@bendpak.com).

### Extended Runways

We extend the runways on our heavy-duty truck lifts to keep your cargo safe. Steep ramps sometimes cause drivers to accidentally hit the pedal too hard and overshoot their target. A gradual climb maximizes loading and unloading convenience, as well as safety.

### Dual-hub cable sheaves

Simply put, bigger sheaves and sheave axles make for a sturdier, safer and more powerful car lift. We build our four-post lift sheaves 12" in diameter, accompanied by 4" diameter sheave axles. You can expect low-maintenance and high-functioning parts for many years to come.

### Heavy-duty aircraft cable

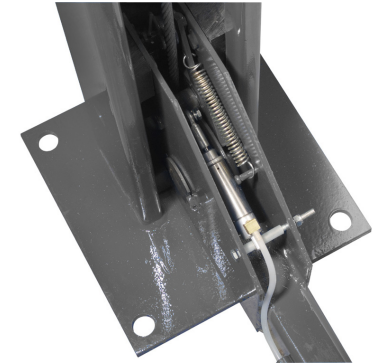
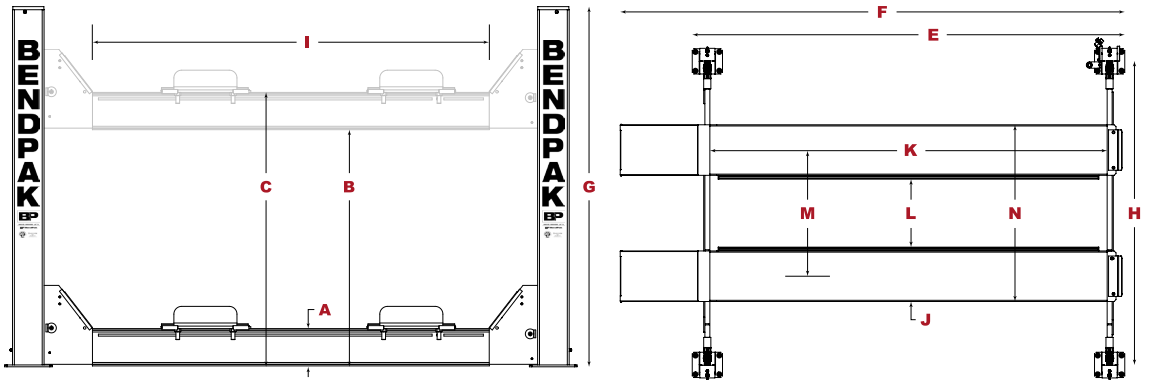
Our 1/2" diameter, 6 x 25 stainless-steel lifting cables have a 14,000-lb. breaking strength per cable. The four cables alone, without the hydraulic cylinder, offer more than enough power to safely lift your 35,000-lb. truck. We over-engineer our components and proudly wear our ALI Certification on the columns of our four-post lifts for all the world to see.

### Built-in lubrication

Grease nipples are useful devices because they make the HDS-27 a self-lubricating, auto-maintaining powerhouse. This massive car lift reduces your costs by giving you quality parts, like self-lubricating sheaves, which require only periodic attention.

### Large base plates

Truck lift base plates are made a little wider than the bases of our lighter-duty four-post lift models: 12" x 12" plate dimensions are sturdy and can be easily bolted into suitable concrete flooring for years.



Model	HDS-18E	HDS-27	HDS-27X
SKU#	5175968	5175162	5175164
Lifting Capacity	18,000 lbs. (8,165 kg)	27,000 lbs. (12,247 kg)	27,000 lbs. (12,247 kg)
A - Min. Runway Height	8.5" (216 mm)	8.5" (216 mm)	8.5" (216 mm)
B - Max. Rise	60" (1,524 mm)	60" (1,524 mm)	60" (1,524 mm)
C - Max. Lifting Height	68.5" (1,740 mm)	68.5" (1,740 mm)	68.5" (1,740 mm)
D - Overall Width	154" (3,912 mm)	154" (3,912 mm)	154" (3,912 mm)
E - Outside Length	257" (6,528 mm)	257" (6,528 mm)	317" (8,052 mm)
F - Overall Length	309.25" (7,856 mm)	312.5" (7,940 mm)	376.75" (9,569 mm)
G - Height of Columns	93" (2,362 mm)	93" (2,362 mm)	93" (2,362 mm)
H - Width Between Columns	134" (3,404 mm)	134" (3,404 mm)	134" (3,404 mm)
I - Drive-Thru Clearance	109" (2,769 mm)	109" (2,769 mm)	109" (2,769 mm)
J - Runway Width	22" (559 mm)	22" (559 mm)	22" (559 mm)
K - Length of Runways	249" (6,321 mm)	249" (6,321 mm)	309" (7,845 mm)
L - Width Between Runways	38" (965 mm) - 56" (1,422 mm)	38" (965 mm) - 56" (1,422 mm)	38" (965 mm) - 56" (1,422 mm)
M - Runway Centerline	60" (1,524 mm) - 78" (1,981 mm)	60" (1,524 mm) - 78" (1,981 mm)	60" (1,524 mm) - 78" (1,981 mm)
N - Outside Edge of Runways	82" (2,083 mm) - 100" (2,540 mm)	82" (2,083 mm) - 100" (2,540 mm)	82" (2,083 mm) - 100" (2,540 mm)
Min Wheelbase @ Rated Capacity	145" (3,683 mm)	185" (4,699 mm)	230" (5,842 mm)
Min Wheelbase @ 75% Capacity	125" (3,175 mm)	160" (4,064 mm)	195" (4,953 mm)
Min Wheelbase @ 50% Capacity	105" (2,667 mm)	135" (3,429 mm)	165" (4,191 mm)
Min Wheelbase @ 25% Capacity	85" (2,159 mm)	110" (2,794 mm)	130" (3,302 mm)
Locking Positions	9	9	9
Lock Spacing	every 6" (152 mm)	every 6" (152 mm)	every 6" (152 mm)
Lifting Time	75 sec	75 sec	75 sec
Motor	220 VAC / 60 Hz / 1 Ph	220 VAC / 60 Hz / 1 Ph	220 VAC / 60 Hz / 1 Ph



An air supply (minimum 30 psi / 3 CFM) is required for the safety-lock mechanisms to disengage. It is solely the responsibility of the end-user to provide, install and maintain the air supply.

Not all BendPak lift models meet the standards as prescribed by ANSI/ALI ALCTV-2017 or ANSI/UL 201. Consult [www.autolift.org](http://www.autolift.org) for a complete list or contact BendPak via [contact@bendpak.com](mailto:contact@bendpak.com).