

The logo for ANC, featuring the letters 'ANC' in a bold, black, sans-serif font. A red diagonal line is positioned to the left of the 'A', extending from the top left towards the middle of the 'A'.

**WESTFIELD
WORLD TRADE CENTER
PATH HALL SIZE STUDY**

OCTOBER 2, 2020

TRIBUTE IN LIGHT

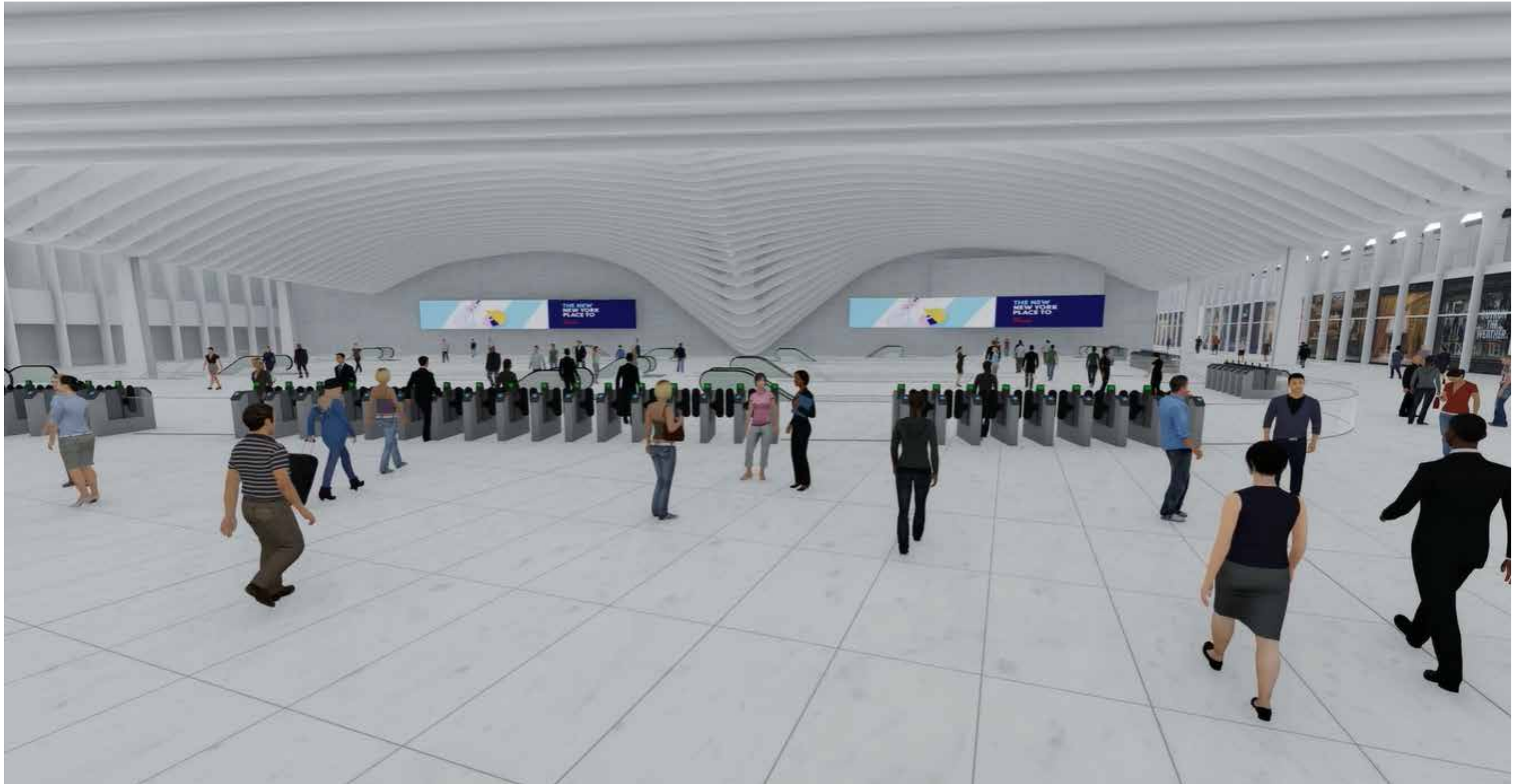
The 9/11 Memorial will be open this evening
for a special viewing of the Tribute in Light.

9/11 MEMORIAL & MUSEUM

#TributeInLight #Honor911

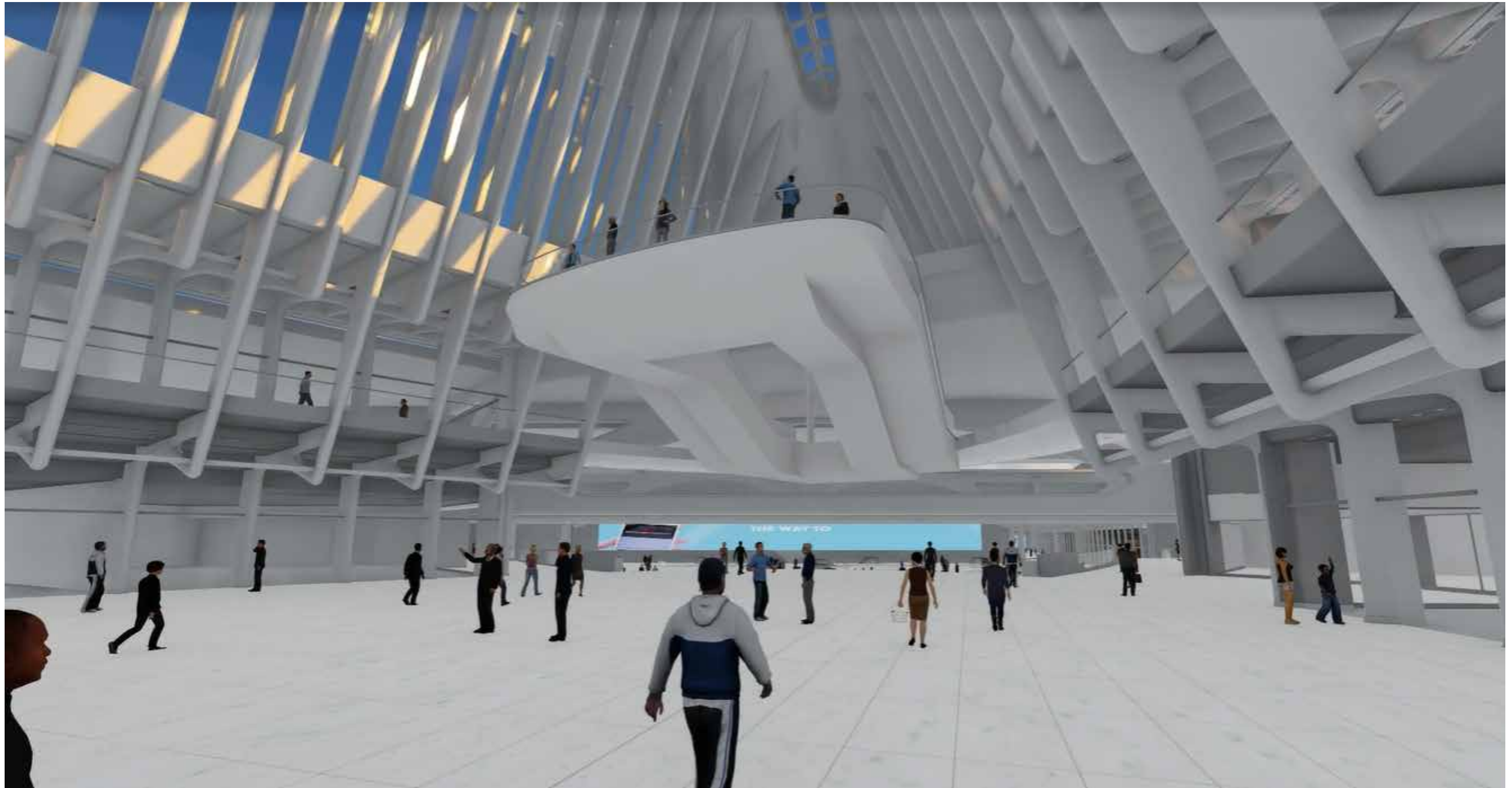
OCULUS PATH HALL // [CLICK TO PLAY OUR 3D RENDER OF LED DISPLAYS](#)

TWO LED SCREENS



OCULUS PATH HALL // [CLICK TO PLAY OUR 3D RENDER OF LED DISPLAYS](#)

DOUBLE-SIDED SCREENS



OCULUS PATH HALL // LED DISPLAYS SPECIFICATIONS

TWO LED SCREENS

SPECIFICATIONS		3.9MM	SPECIFICATIONS		2.6MM
MM Pitch		3.9mm	MM Pitch		2.6mm
Quantity		2	Quantity		2
Active Display Height (ft.)		9.23'	Active Display Height (ft.)		9.23'
Active Display Width (ft.)		78.74'	Active Display Width (ft.)		78.74'
Pixel Resolution (H)		720 p	Pixel Resolution (H)		1080 p
Pixel Resolution (W)		6144 p	Pixel Resolution (W)		9216 p
Total SQFT		1,453.07	Total SQFT		1,453.07

DOUBLE-SIDED SCREENS

10.15 by 149.28'

SPECIFICATIONS		3.9MM	SPECIFICATIONS		2.6MM
MM Pitch		3.9mm	MM Pitch		2.6mm
Quantity		Double Sided	Quantity		Double Sided
Active Display Height (ft.)		10.15'	Active Display Height (ft.)		10.15'
Active Display Width (ft.)		149.28'	Active Display Width (ft.)		149.28'
Pixel Resolution (H)		792 p	Pixel Resolution (H)		1188 p
Pixel Resolution (W)		11648 p	Pixel Resolution (W)		17472 p
Total SQFT		1,515.17	Total SQFT		1,515.17

12.00' by 149.28'

SPECIFICATIONS		3.9MM	SPECIFICATIONS		2.6MM
MM Pitch		3.9mm	MM Pitch		2.6mm
Quantity		Double Sided	Quantity		Double Sided
Active Display Height (ft.)		12.00'	Active Display Height (ft.)		12.00'
Active Display Width (ft.)		149.28'	Active Display Width (ft.)		149.28'
Pixel Resolution (H)		936 p	Pixel Resolution (H)		1404 p
Pixel Resolution (W)		11648 p	Pixel Resolution (W)		17472 p
Total SQFT		1,790.74	Total SQFT		1,790.74

OCULUS PATH HALL // PROJECT TOTAL SIDE BY SIDE COMPARISON

REGULAR TIME:

	3.9MM WALL MOUNTED (2) 9.23' H X 78.74' W	2.6MM WALL MOUNTED (2) 9.23' H X 78.74' W	3.9MM DOUBLE SIDED HANGING 10.15' H X 149.23' W	3.9MM DOUBLE SIDED HANGING 12.00' H X 149.23' W	2.6MM DOUBLE SIDED HANGING 10.15' H X 149.23' W	2.6MM DOUBLE SIDED HANGING 12.00' H X 149.23' W
LED DISPLAY	\$990,127	\$1,296,253	\$1,928,863	\$2,277,550	\$2,507,121	\$2,965,458
INSTALLATION	\$1,656,879	\$1,656,879	\$2,242,427	\$2,242,427	\$2,242,427	\$2,242,427
CONTROL MANAGEMENT SYSTEM	\$221,228	\$221,228	\$341,243	\$341,243	\$341,243	\$341,243
GRAND TOTAL:	\$2,868,234	\$3,174,360	\$4,512,533	\$4,861,219	\$5,090,791	\$5,549,128
<i>Difference:</i>		<i>\$306,127</i>	<i>\$1,644,299</i>	<i>\$1,992,986</i>	<i>\$2,222,557</i>	<i>\$2,680,894</i>

OVERTIME:

	3.9MM WALL MOUNTED (2) 9.23' H X 78.74' W	2.6MM WALL MOUNTED (2) 9.23' H X 78.74' W	3.9MM DOUBLE SIDED HANGING 10.15' H X 149.23' W	3.9MM DOUBLE SIDED HANGING 12.00' H X 149.23' W	2.6MM DOUBLE SIDED HANGING 10.15' H X 149.23' W	2.6MM DOUBLE SIDED HANGING 12.00' H X 149.23' W
LED DISPLAY	\$990,127	\$1,296,253	\$1,928,863	\$2,277,550	\$2,507,121	\$2,965,458
INSTALLATION	\$2,062,284	\$2,062,284	\$3,251,519	\$3,251,519	\$3,251,519	\$3,251,519
CONTROL MANAGEMENT SYSTEM	\$221,228	\$221,228	\$341,243	\$341,243	\$341,243	\$341,243
GRAND TOTAL:	\$3,273,639	\$3,579,766	\$5,521,625	\$5,870,311	\$6,099,883	\$6,558,220
<i>Difference:</i>		<i>\$306,127</i>	<i>\$2,247,986</i>	<i>\$2,596,672</i>	<i>\$2,826,244</i>	<i>\$3,284,581</i>

PROJECT NOTES:

Hanging Double-Sided Display Notes:

- Westfield/ Others are responsible for the metal ceiling panels. ANC pricing is contingent on what is found in ceiling. Pricing assumes adequate structure, and easily accessible attachment point.
- Pricing assumes power and data brought to display location by Others.

Attached to Wall Display Notes:

- Includes (2) months scaffolding for North & South Displays; includes drilling of holes into marble by Miller Druck;
- Pricing assumes power and data brought to display location by Others.

OCULUS PATH HALL // LED SCREENS PRICING: REGULAR TIME INSTALLATION

TWO LED SCREENS

DISPLAY	PRICING
3.9 mm Displays - QTY 2	\$990,127
INSTALLATION	
Miller Druck	\$63,735
Safeway Scaffolding	\$337,647
North Shore Neon	\$966,308
Electrical and Structural Engineering	\$170,588
ANC Project Management and General Conditions	\$118,600
	\$1,656,879
CONTROL MANAGEMENT SYSTEM	
LiveSync Control Sysytem	\$221,228
GRAND TOTAL:	\$2,868,234

DISPLAY	PRICING
2.6mm Displays - QTY 2	\$1,296,253
INSTALLATION	
Miller Druck	\$63,735
Safeway Scaffolding	\$337,647
North Shore Neon	\$966,308
Electrical and Structural Engineering	\$170,588
ANC Project Management and General Conditions	\$118,600
	\$1,656,879
CONTROL MANAGEMENT SYSTEM	
LiveSync Control Sysytem	\$221,228
GRAND TOTAL:	\$3,174,360

DOUBLE-SIDED SCREENS

10.15 by 149.28'

DISPLAY	PRICING
3.9mm Displays Double-Sided	\$1,928,863
INSTALLATION	
Installation (inclusive of heavy equipment)	\$1,900,870
Electrical & Structural Engineering	\$110,227
ANC Project Management & General Conditions	\$231,330
	\$2,242,427
CONTROL MANAGEMENT SYSTEM	
LiveSync Control Sysytem	\$341,243
GRAND TOTAL:	\$4,512,533

DISPLAY	PRICING
2.6mm Displays Double-Sided	\$2,507,121
INSTALLATION	
Installation (inclusive of heavy equipment)	\$1,900,870
Electrical & Structural Engineering	\$110,227
ANC Project Management & General Conditions	\$231,330
	\$2,242,427
CONTROL MANAGEMENT SYSTEM	
LiveSync Control Sysytem	\$341,243
GRAND TOTAL:	\$5,090,791

12.00' by 149.28'

DISPLAY	PRICING
3.9mm Displays Double-Sided	\$2,277,550
INSTALLATION	
Installation (inclusive of heavy equipment)	\$1,900,870
Electrical & Structural Engineering	\$110,227
ANC Project Management & General Conditions	\$231,330
	\$2,242,427
CONTROL MANAGEMENT SYSTEM	
LiveSync Control Sysytem	\$341,243
GRAND TOTAL:	\$4,861,219

DISPLAY	PRICING
2.6mm Displays Double-Sided	\$2,965,458
INSTALLATION	
Installation (inclusive of heavy equipment)	\$1,900,870
Electrical & Structural Engineering	\$110,227
ANC Project Management & General Conditions	\$231,330
	\$2,242,427
CONTROL MANAGEMENT SYSTEM	
LiveSync Control Sysytem	\$341,243
GRAND TOTAL:	\$5,549,128

OCULUS PATH HALL // LED SCREENS PRICING: OVERTIME INSTALLATION

TWO LED SCREENS

DISPLAY	PRICING
3.9 mm Displays - QTY 2	\$990,127
INSTALLATION	
Miller Druck	\$90,049
Safeway Scaffolding	\$383,750
North Shore Neon	\$1,288,635
Electrical and Structural Engineering	\$181,250
ANC Project Management and General Conditions	\$118,600
	2,062,284
CONTROL MANAGEMENT SYSTEM	
LiveSync Control Sysytem	\$221,228
GRAND TOTAL:	\$3,273,639

DISPLAY	PRICING
2.6mm Displays - QTY 2	\$1,296,253
INSTALLATION	
Miller Druck	\$90,049
Safeway Scaffolding	\$383,750
North Shore Neon	\$1,288,635
Electrical and Structural Engineering	\$181,250
ANC Project Management and General Conditions	\$118,600
	2,062,284
CONTROL MANAGEMENT SYSTEM	
LiveSync Control Sysytem	\$221,228
GRAND TOTAL:	\$3,579,766

DOUBLE-SIDED SCREENS

10.15 by 149.28'

DISPLAY	PRICING
3.9mm Displays Double-Sided	\$1,928,863
INSTALLATION	
Installation (inclusive of heavy equipment)	\$2,909,962
Electrical & Structural Engineering	\$110,227
ANC Project Management & General Conditions	\$231,330
	\$3,251,519
CONTROL MANAGEMENT SYSTEM	
LiveSync Control Sysytem	\$341,243
GRAND TOTAL:	\$5,521,625

DISPLAY	PRICING
2.6mm Displays Double-Sided	\$2,507,121
INSTALLATION	
Installation (inclusive of heavy equipment)	\$2,909,962
Electrical & Structural Engineering	\$110,227
ANC Project Management & General Conditions	\$231,330
	\$3,251,519
CONTROL MANAGEMENT SYSTEM	
LiveSync Control Sysytem	\$341,243
GRAND TOTAL:	\$6,099,883

12.00' by 149.28'

DISPLAY	PRICING
3.9mm Displays Double-Sided	\$2,277,550
INSTALLATION	
Installation (inclusive of heavy equipment)	\$2,909,962
Electrical & Structural Engineering	\$110,227
ANC Project Management & General Conditions	\$231,330
	\$3,251,519
CONTROL MANAGEMENT SYSTEM	
LiveSync Control Sysytem	\$341,243
GRAND TOTAL:	\$5,870,311

DISPLAY	PRICING
2.6mm Displays Double-Sided	\$2,965,458
INSTALLATION	
Installation (inclusive of heavy equipment)	\$2,909,962
Electrical & Structural Engineering	\$110,227
ANC Project Management & General Conditions	\$231,330
	\$3,251,519
CONTROL MANAGEMENT SYSTEM	
LiveSync Control Sysytem	\$341,243
GRAND TOTAL:	\$6,558,220

OCULUS PATH HALL // STATEMENT OF WORK

ADMINISTRATIVE	ANC	PURCHASER
Provide accurate architectural, structural engineering, and electrical drawings or information, including exploratory surveys to confirm existing conditions if necessary.		X
Provide Payment and Performance Bond.		X
All required zoning , building, street or sidewalk closure permits, and associated costs, as required.		X
Shipping of all equipment to site.	X	
Receive, unload, and inspect all new equipment upon delivery.	X	
Provide safe storage of video equipment and control equipment in a safe, dry and secure location until installation, if required.		X
Unobstructed access to equipment and control room throughout installation, until equipment is 100% operational.		X
ENGINEERING & SUBMITTALS	ANC	PURCHASER
Customer is responsible to ensure the existing structure/building is adequate, including, but not limited to, providing sealed engineering and calculations, as-builts, and other information, documentation, or enabling of exploratory work as may be required for ANC's Engineer to adequately design the display structure and it's attachment to the building or structure.		X
Provide structural engineering drawings, electrical drawings, shop drawings, and equipment locations for new equipment.	X	
Engineering and certification for new equipment attachment design.	X	
Provide approval of all structural engineering drawings, electrical drawings, shop drawings, equipment locations, color renderings, and ad copy layouts for new equipment.		X
Responsible to ensure sufficient structural integrity at points of attachment, including any modifications, additions or alterations as required.		X
DEMOLITION, REMOVAL & SITE CLEANUP	ANC	PURCHASER
Removal of existing equipment and structural components, as required.		X
Disposal of existing equipment and structural components, as required.		X
Post installation site clean-up.	X	
PHYSICAL INSTALLATION	ANC	PURCHASER
Fabricate, deliver, and install structural (Sub-structure) supports for all equipment, including hardware, shims and miscellaneous materials as required.	X	
Provide & Install LED components.	X	
Provide all required Floor/ Field Protection, if required.		X
Provide camera ready artwork for ad panels, and logos at time of order, if required.		X

OCULUS PATH HALL // STATEMENT OF WORK CONTINUED

ELECTRICAL & DATA INSTALLATION	ANC	PURCHASER
Submit electrical engineering drawings	X	
Provide (and install, if required) primary power feed within 10' of the display location with sufficient amps for ANC proposed display(s); typically 208v 3-phase.		X
Provide secondary electrical panels and/or remote power control, if required.	X	
Installation of secondary electrical panels and/or remote power control, if required. Including all conduit, wire, and low voltage conduit & wire as may be required for the remote power control.	X	
Provide & Install all branch circuits necessary to LED display(s), subsequent backlit displays (if necessary), and 120V 1-phase servicing outlets in the vicinity of the display location (if necessary). Exact locations to be coordinated with ANC and electrical contractor.	X	
Furnish signal cables as specified by ANC, if required.	X	
Provide and install signal cable conduit, with pull string, from control location to all Equipment locations/signal termination points, as delineated in the electrical and signal drawings.		X
Labor to pull signal cable (and remove existing cable), if required.		X
Terminate signal cable at control system equipment and display equipment, if required.		X
Mount and install fiber patch panel in control location and display location, if required.	X	
Provide high speed internet connection to control room equipment.		X
Power outlets on clean dedicated circuit(s) for all control equipment required per electrical engineering within control room location.		X
CONTROL SYSTEM	ANC	PURCHASER
Provide climate controlled control room for all control equipment and processing. Normal operating temperature should be between 65 and 75 degrees Fahrenheit. Normal operating humidity should be less than 80 percent non condensing.		X
Supply static IP address five (5) days prior to installation.		X
Third party application fees as required by the customer, i.e. stat feed, etc.		X
Provide computer(s) for control software.	X	
Receive, set-up, and testing of all control equipment.	X	
Set-up and testing of statistics and timing system.	X	

OCULUS PATH HALL // STATEMENT OF WORK CONTINUED

TRAINING	ANC	PURCHASER
Provide list of personnel for training five (5) days in advance.		X
Provide sign off list for all training to be distributed to all parties upon completion.	X	
Perform two (2) days of maintenance training.	X	
Perform two (2) days of signage and control system operation.	X	
Perform final systems testing and commissioning.	X	
PROJECT CLOSE- OUT	ANC	PURCHASER
Site walk thru to conduct final inspection of punch list items with ANC		X
Completion of punch list items	X	
PROJECT SPECIFIC NOTES		
ANC has provided a (5) year warranty on all LED parts.		
ANC has included a video scaler as part of the control system package to enable dynamic live video content.		
ANC has included installation pricing with Union labor rates.		
ANC has included applicable bonds and taxes.		
Any and all sales and use taxes, duties (including, but not limited to, any import or associated duties, fees, tariffs), excises and other charges, including without limitation VAT/Sales Tax, (“collectively referred to as Government Charges”) now or henceforth levied on any date in connection with the sale of the LED System shall be the full responsibility of the Purchaser. Purchaser shall reimburse ANC for any and all Government Charges ANC may advance on Purchaser’s behalf. Purchaser acknowledges that neither ANC nor Purchaser may have advance knowledge of such Government Charges. ANC has excluded any and all taxes from the pricing in the enclosed proposal.		



ANC
www.anc.com