



YOUR TECHNOLOGY TOOLKIT

The ANC Capabilities Overview



Engineering the Unforgettable

sports



events



places



Design & Consulting

Project Execution

Service Operations

ANC is an Experience Design and Execution company that transforms commercial spaces such as entertainment venues, sports arenas, transit hubs, and retail destinations into immersive digital media experiences.

// So, what are my options and how do they differ?



The Technology Toolkit We Deliver:

- LED
- OLED
- LED Glass
- LCD and LCD Video Walls
- Temporary and Mobile Event Systems
- Interactive Kiosks and Wayfinding
- Control System
- IPTV
- Integrated Audio System
- Broadcast Systems
- Architectural Lighting
- 3D Projection
- Facial Recognition
- Motion Sensors
- Augmented Reality



STANDARD & CUSTOM DISPLAYS

- Exclusive distribution & service partnerships
- Traditional Indoor and Outdoor LED/LCD displays
- Custom designed LED modules
- Fine pitch through low resolution display options
- Wide range of component options
- Premium Solutions & Cost-Effective Options

THIN LED

- Adheres to ADA Regulations (2" off wall)
- Thin Design Suited To Direct Wall Mounting
- Magnetic Fixings For Easy Installation
- Fix And Remove From The Front



THIN LED

- **PRODUCT LEAD TIME**
 - 50-60 days + shipping
- **PRODUCT SPECIFICATIONS & OPTIONS**
 - Indoor only
 - From 0.9mm to 3.9mm
 - Exact HD aspect ratio and formats
 - 2" thin
 - No sub frame required (can mount directly on wall)
 - Patented features for easy and fast installation
 - Power and data redundancy available (option)
- **INSTALLATION/INFRASTRUCTURE CONSIDERATIONS**
 - Uses commonly available 120-240 VAC Power at display location
 - Wireless and Wired content delivery options
 - UL/ETL certified Electrical/Data cabling within display sections using internal power and data jumpers
 - Power and data can be wired in any direction
 - Concave curve available (option)
 - ADA compliant
- **SERVICE & WARRANTY**
 - Two and Five Year Standard Warranty terms
 - Extended Warranty Options
 - Front Service Only (wall mount)



“MICRO” LED

MICRO/GOB/COB

PROS

- Durable, epoxy coated
- Improved contrast over fine pitch

CONS

- Emerging tech (\$\$\$ expensive!)
- Can be reflective, uneven finish when “off”
- Generally difficult or impossible to repair LED



“MICRO” LED

MICRO/GOB/COB

- **GENERAL PRODUCT SPECIFICATIONS & OPTIONS**
 - Indoor only
 - ~0.9mm to 1.7mm
 - ~1200 to 1600nit brightness
 - Typically 16:9 aspect ratio designs
 - Remote power and data options
- **INSTALLATION/INFRASTRUCTURE CONSIDERATIONS**
 - Content delivery, proprietary processing
 - Power and data wiring same as fine pitch
 - Curves, difficult to impossible
 - Specialized install (factory supervised)
 - ADA compliance
 - TAA (Some)
 - Not all products are Class “B”
- **SERVICE & WARRANTIES**
 - Full Front magnetic service
 - 1-3 Year Standard Warranty terms
 - Extended Warranty Options Generally Available
- **PRODUCT LEAD TIME**
 - Stock to “never”



ANC SOLUTION: THIN LED

WELLS FARGO CENTER BAR DISPLAYS

WELLS FARGO CENTER – PHILADELPHIA: CLUB BARS, SPORTSBOOK, CONCOURSES, AND SUITES





Kershaw Ks =
Dodger Wins

10-3
2.87 ERA

84.5%

The Dodgers win **84.5%** of games (9-2) when Clayton Kershaw throws 7 or more strikeouts this season.

DODGERS A.I.

HOME RUN PROBABILITY

M. Batts	17.4%
C. Seeger	15.1%
J. Turner	15.3%
C. Bellinger	24.3%
M. Muncy	22.6%
A. Pollock	17.1%
G. Lux	14.3%
W. Smith	16.1%
C. Kershaw	2.1%

* Cody Bellinger has the highest projected Home Run Probability today, according to Dodgers A.I.

DODGERS A.I.

AT-BAT OUTCOME PROBABILITY

STRIKEOUT	34.2%
OUT	22.1%
HIT	17.4%
SINGLE	12.3%
DOUBLE	6.4%
HOME RUN	4.1%
WALK	2.9%
TRIPLE	0.6%

DODGERS A.I.

AT-BAT OUTCOME PROBABILITY

STRIKEOUT	34.2%
OUT	22.1%
HIT	17.4%
SINGLE	12.3%
DOUBLE	6.4%
HOME RUN	4.1%
WALK	2.9%
TRIPLE	0.6%

ANC SOLUTION: THIN LED

DODGERS BAR

FLEXIBLE LED

- Flexible transformation
- Customizable shape: flat into curves, etc
- Vivid visual effect
- Seamless assembly
- Individually replaceable tiles, easy to maintain
- Modules offer magnetic front maintenance
- Minimum diameter .95m



FLEXIBLE LED

- **PRODUCT LEAD TIME**
 - 50-60 days + shipping
- **PRODUCT SPECIFICATIONS & OPTIONS**
 - Indoor Resolutions range from 1.9mm to 6mm
 - Outdoor Resolutions from 2.9 to 10mm
 - Smooth curves down to 1m diameter
 - Convex or concave or straight(no curve)
- **INSTALLATION/INFRASTRUCTURE CONSIDERATIONS**
 - Uses commonly available 120-240 VAC Power at display location
 - Wireless and Wired content delivery options
 - UL/ETL certified Electrical/Data cabling within display sections using pre made power and data jumpers
 - Bend Radius to 1m diameter
 - Can come with or without a cabinet
- **SERVICE & WARRANTY**
 - Two and Five Year Standard Warranty terms
 - Extended Warranty Options
 - Front/Rear Service depending on application requirements and product chosen



ROCKET MORTGAGE POWER PORTAL

ANC SOLUTION: FLEX LED



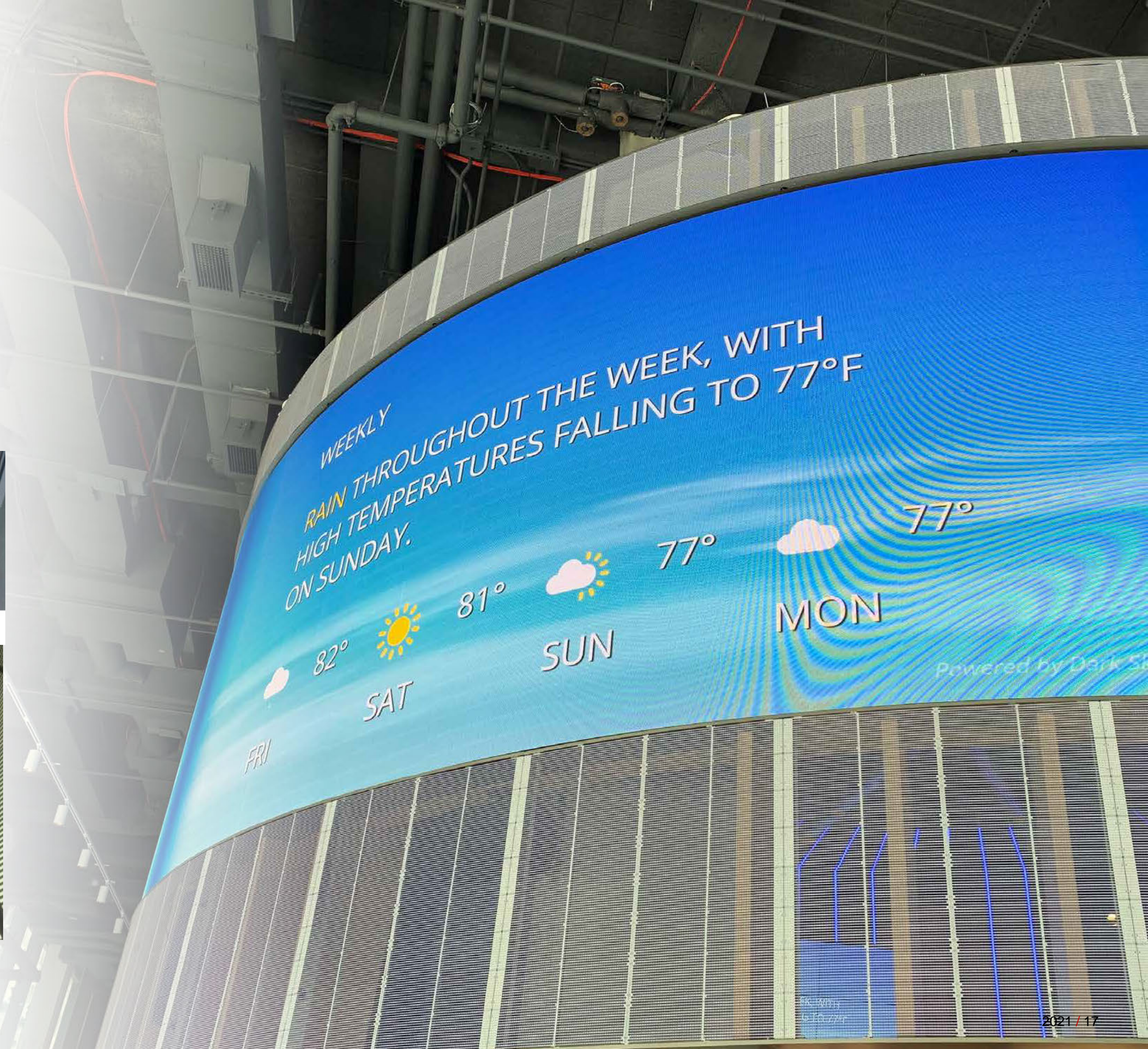
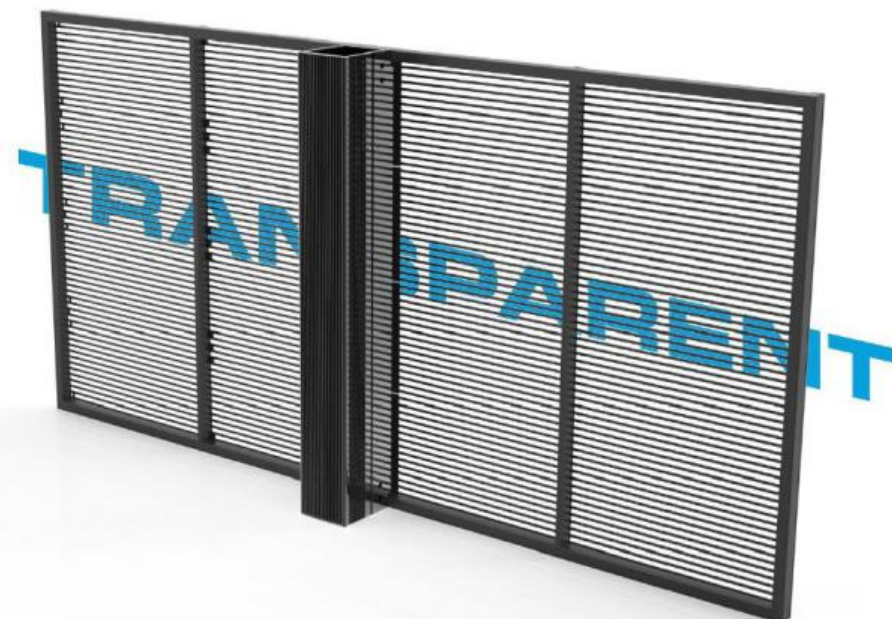
[Click to view video](#)

TRANSPARENT LED

- Super Transparent
- High Brightness
- Wide Viewing Angle
- Super Slim
- High Definition
- Up To 70% Transparency
- Lightweight

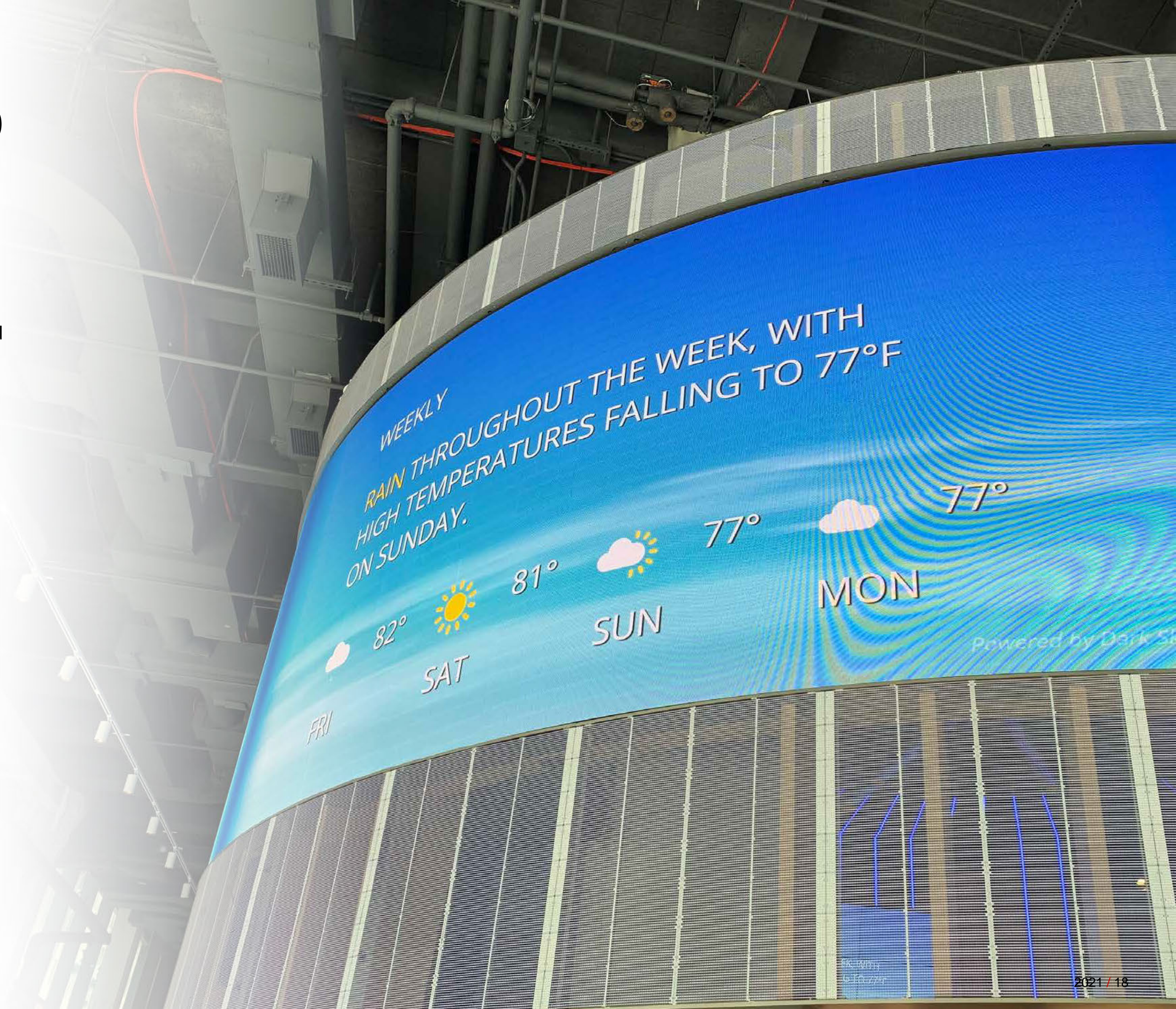


HIGHLY FLEXIBLE



TRANSPARENT LED

- **PRODUCT LEAD TIME**
 - 50-60 days +shipping
- **PRODUCT SPECIFICATIONS & OPTIONS**
 - Resolutions range from 2.6mm to 15mm indoor and from 10mm to 75mm outdoor
 - Indoor/Outdoor
 - Best Use Cases are Display Sizes 4'x6' and larger
 - Transparency up to 85%
 - High Brightness(5000 NIT even on indoor)
 - Designed for store front window displays
 - Can curve depending on application
 - Can match corporate colors
- **INSTALLATION/INFRASTRUCTURE CONSIDERATIONS**
 - Uses commonly available 120-240 VAC Power at display location
 - Wireless and Wired content delivery options
 - UL/ETL certified Electrical/Data cabling within display sections using pre made power and data jumpers
 - Very light weight
- **SERVICE & WARRANTY**
 - Two and Five Year Standard Warranty terms
 - Extended Warranty Options
 - Front/Rear Service depending on application and product chosen



CHASE BANK

ANC SOLUTION: TRANSPARENT LED



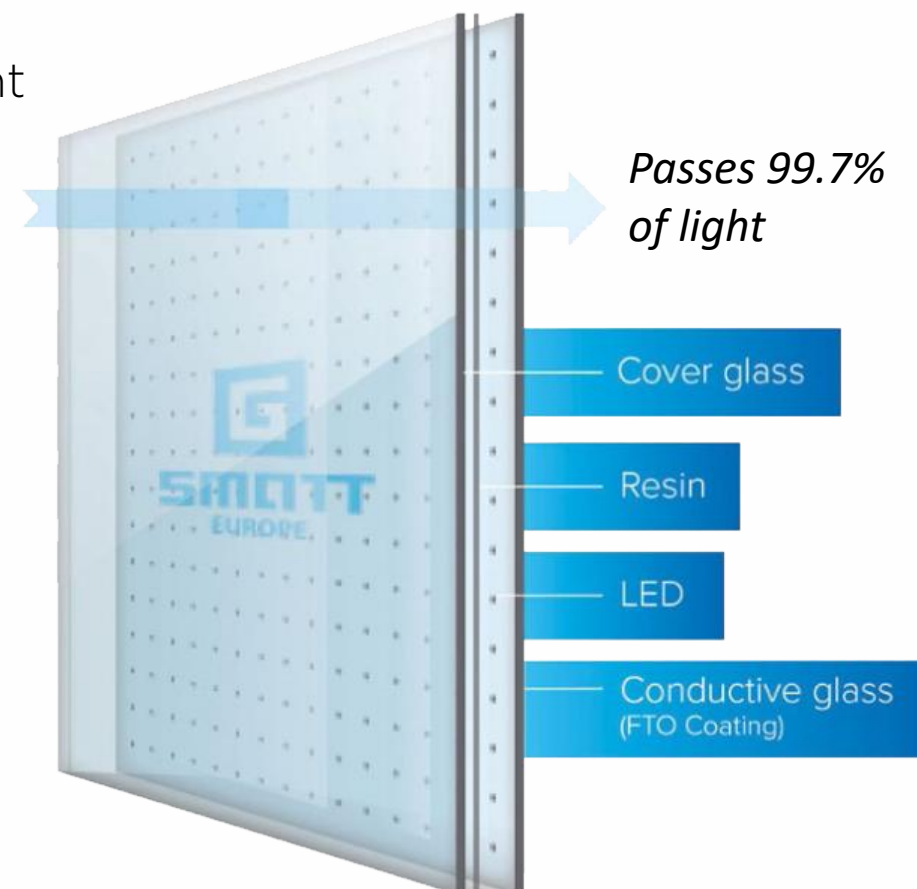
ALLEGIANT STADIUM

SOLUTION: MESH LED

LED “GLASS”

ANC and GLAAM America Form G-Glass Partnership announced October 2020.

- 24 global patents. 200+ global installations. 100% custom-design built to order.
- No longer compromise between transparency or dynamic video
- Forefront of the Media Architecture Revolution
- Architectural-Grade LED Glass, durable, encased design
- Installs like standard glazing
- 99%+ Transparent



LED “GLASS”

- **PRODUCT SPECIFICATIONS & OPTIONS**

- 99.75% Transparent
- Indoor/Outdoor
- 20mm indoor and 20mm to 60mm outdoor
- ~2000 – 5000 nit brightness
- From 1' x 1' to 1M x 3M sizes

- **INSTALLATION/INFRASTRUCTURE CONSIDERATIONS**

- BTO design to replace existing or spec'd glazing
- Varying glass and coating options
- Integrated power and data paths
- Remote power/data, up to 150' away
- Custom content delivery
- TAA Compliant

- **SERVICE & WARRANTY**

- Five Year Standard Warranty on Glass
- Extended Warranty Options
- Front/Rear Service depending on application

- **PRODUCT LEAD TIME**

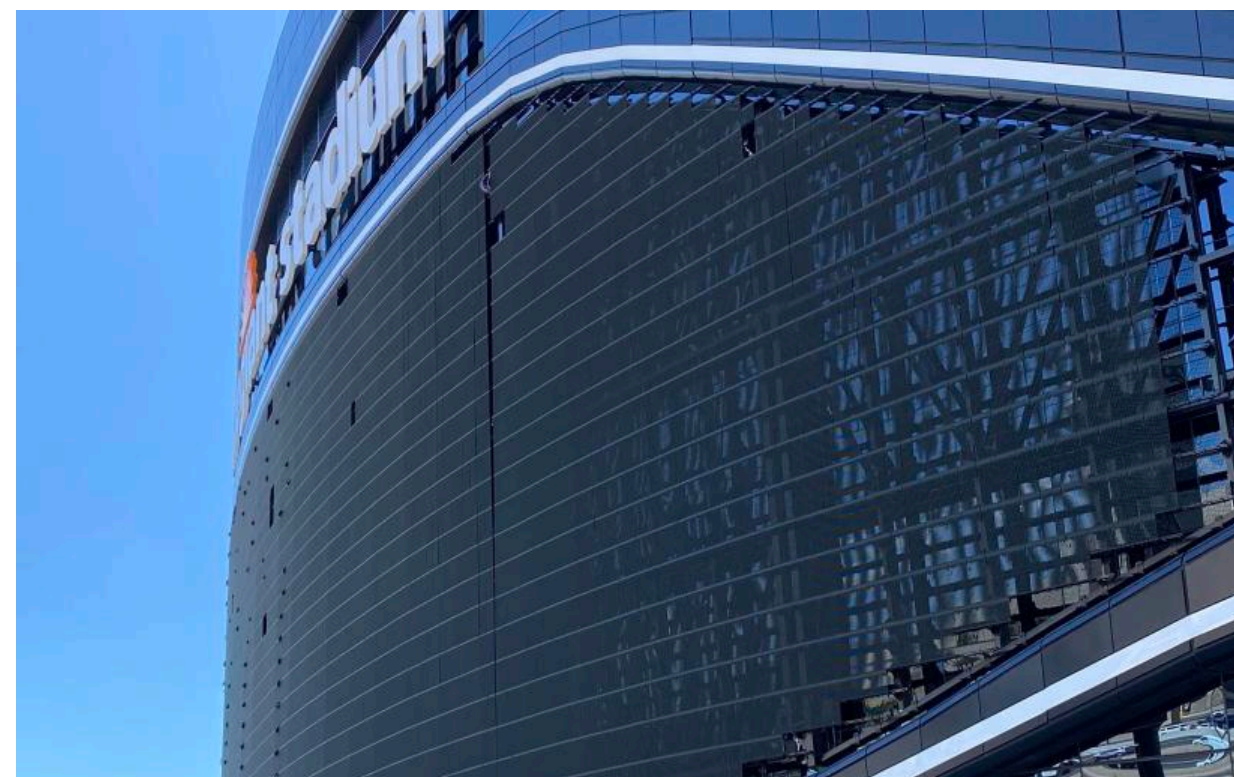
- BTO 60-75 days



G-GLASS
(right)

VS

MESH LED
(left)



COEX Center

SOLUTION: ARCHITECTURAL-GRADE GLASS LED



[Click to view video](#)

Tin Building - Pier 17

SOLUTION: ARCHITECTURAL-GRADE GLASS LED



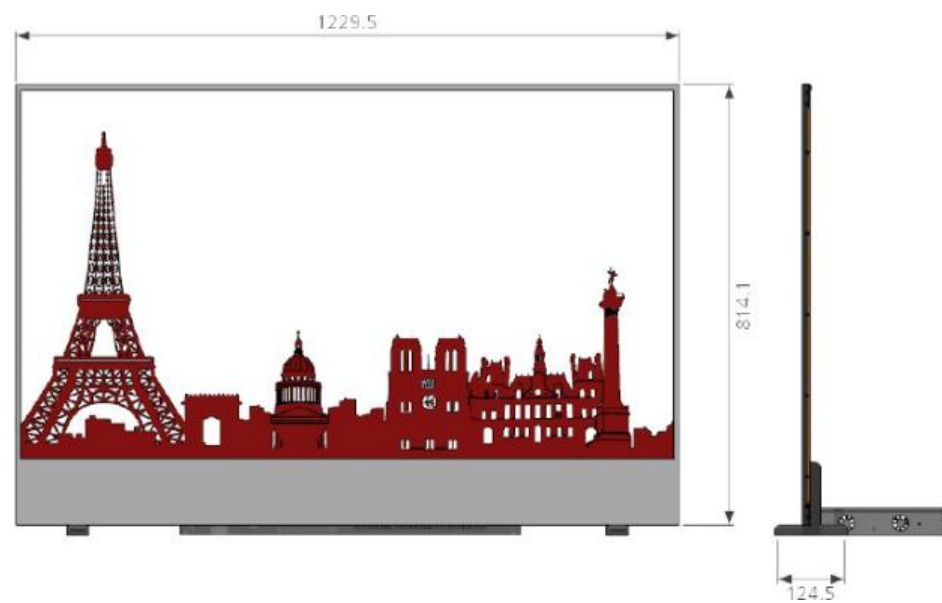
RENDERING IS FOR VISUALIZATION PURPOSES. FINAL DEPLOYED PRODUCT AND ENVIRONMENT MAY DEVIATE FROM VISUALIZATION **ANC**



[Click to view video](#)

Transparent OLED/LCD

- Completely transparent when “off”
- HD and 4K Resolutions
- Custom Hybrid LCD Configurations
- Kiosks, Video Walls, Promotional Displays
- High Brightness
- Factory Quality Assurance



Transparent OLED/LCD

- **PRODUCT SPECIFICATIONS & OPTIONS**

- TOLED

- Indoor only
 - TOLED 55" HD resolution
 - TOLED 400 nit

- TLCD

- Indoor/Outdoor
 - Sizes from 20" to 80"+ with customization

- **INSTALLATION/INFRASTRUCTURE CONSIDERATIONS**

- Both transparent when pixels are "OFF"
 - Custom content delivery, especially pixel to pixel
 - TLCD not emissive (needs backlight)
 - Standard 2x tall walls, 3x tall with customization
 - "Glass" can be tailored or curved to project
 - Power and data can be remote for access


- **SERVICE & WARRANTY**

- Two Year Standard Warranty terms
 - Service can vary

- **PRODUCT LEAD TIME**

- 60-80 Days



A modern office lobby with large, multi-paned windows. The windows are decorated with large, colorful leaves (red, orange, yellow) and butterflies. The interior features black chairs and a desk with a monitor. The text 'SOLUTION: Transparent /LCD' is overlaid on the left side of the image.

SOLUTION: Transparent /LCD

OFFICE LOBBY

BIKE

**GHOST FACTORY
RACING TEAM**

**GHOST
INTERNATIONAL**



[Click to view video](#)

// So, where to go from here?

Plan Digital Media Early For An Integrated Experience.

Strategic technology partnerships with versatile manufacturers allows Integrator the advantage to recommend and incorporate the right solutions matched to your individual project objectives and goals.

INTEGRATOR **ADVANTAGE**





The ANC Advantage: Technology Solutions to Re-Define the Consumer Experiences
A FOCUSED AND PURPOSE-DRIVEN START TO FINISH APPROACH

DESIGN & CONSULTING

Define Product Specs

A/V Consulting

Product Selection from
Multiple Factories

Pre-construction Documentation

Experience Creation

Creative Design & Visualizations

INTEGRATION & EXECUTION

A/V Integration

Engineering

Product Sourcing

Factory Quality Assurance

Content Creation

SERVICE OPERATIONS

Software

Content Programming

Event Operation

Service & Maintenance

Creative Studios Graphic
/Visual Design

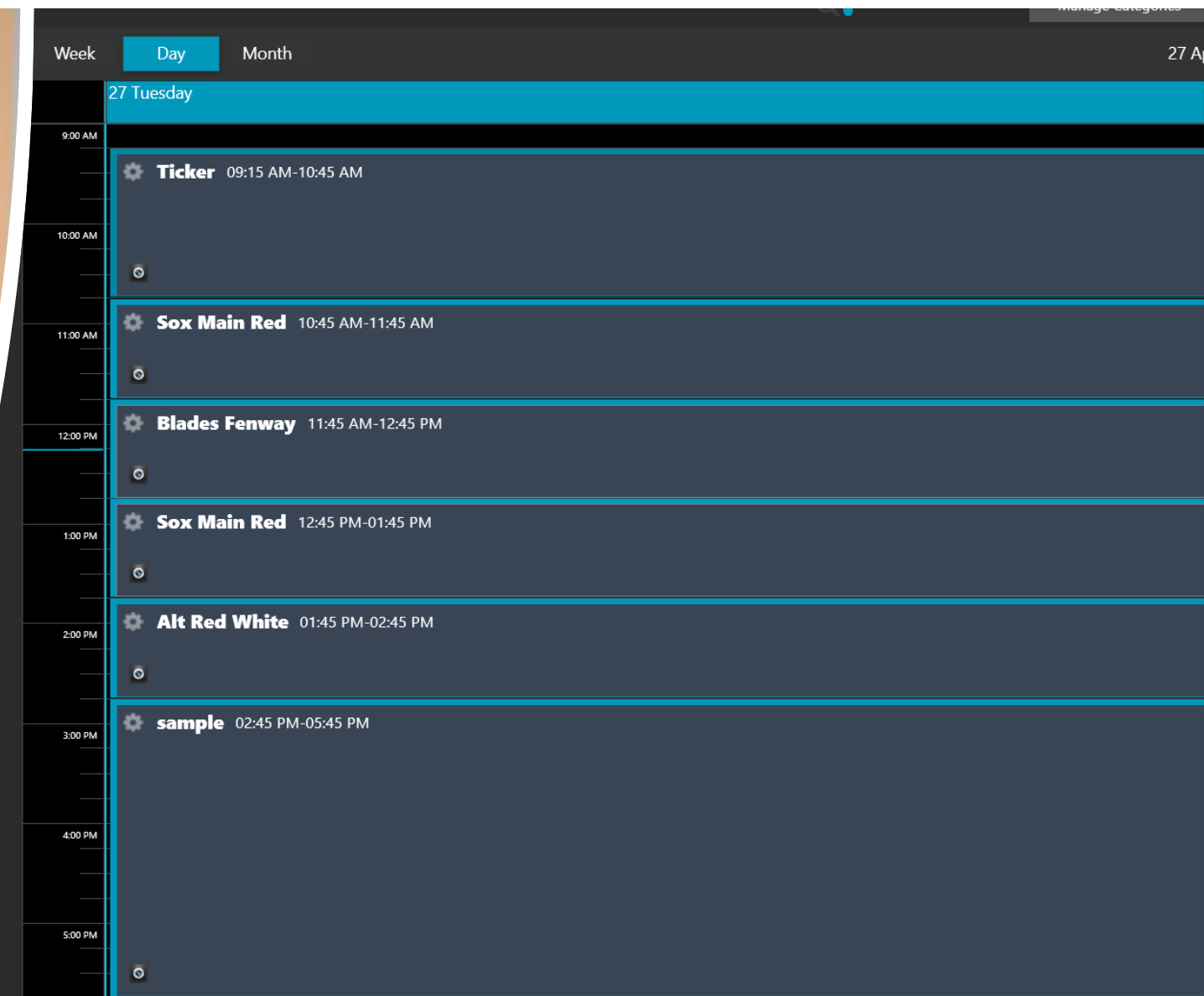
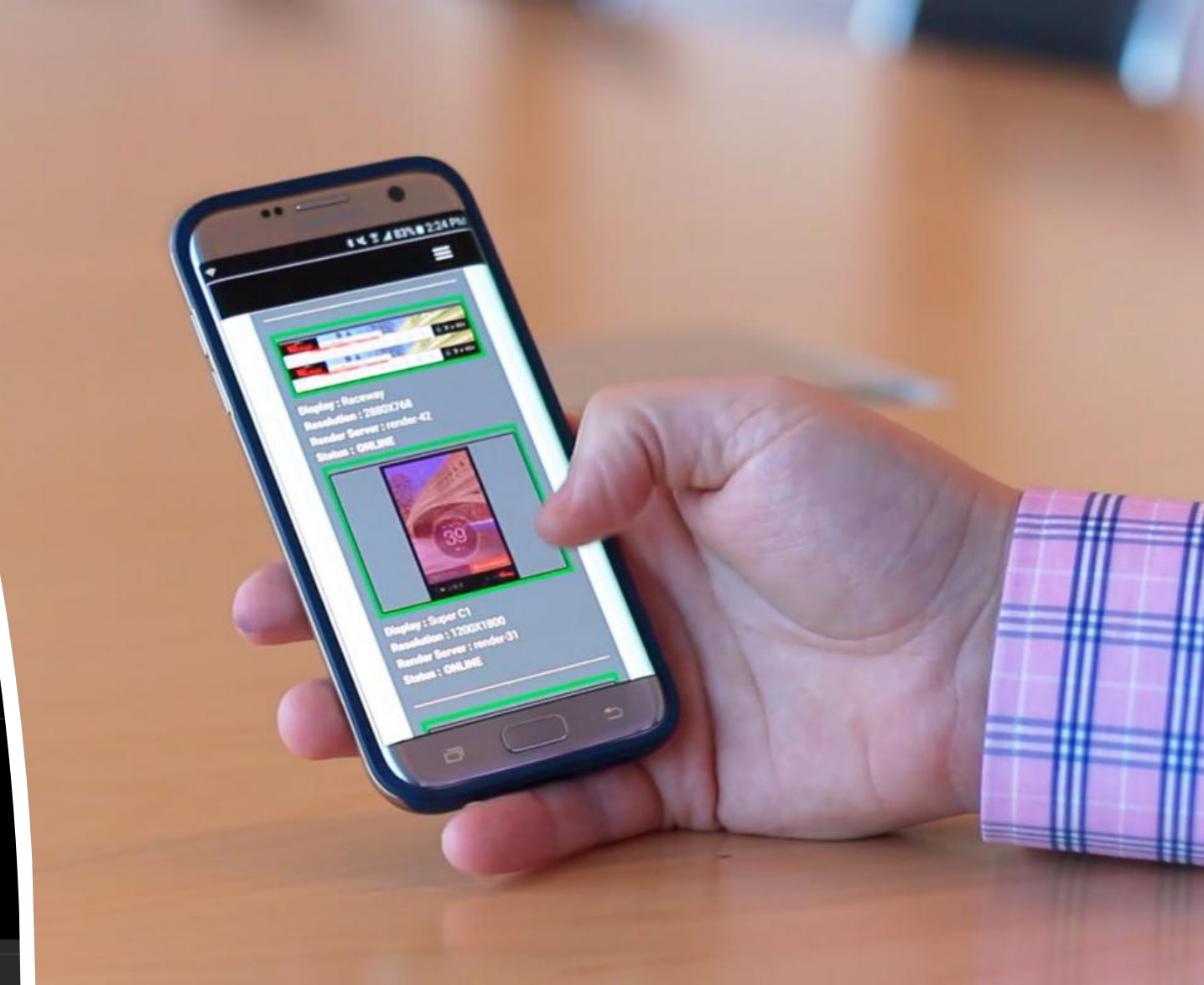
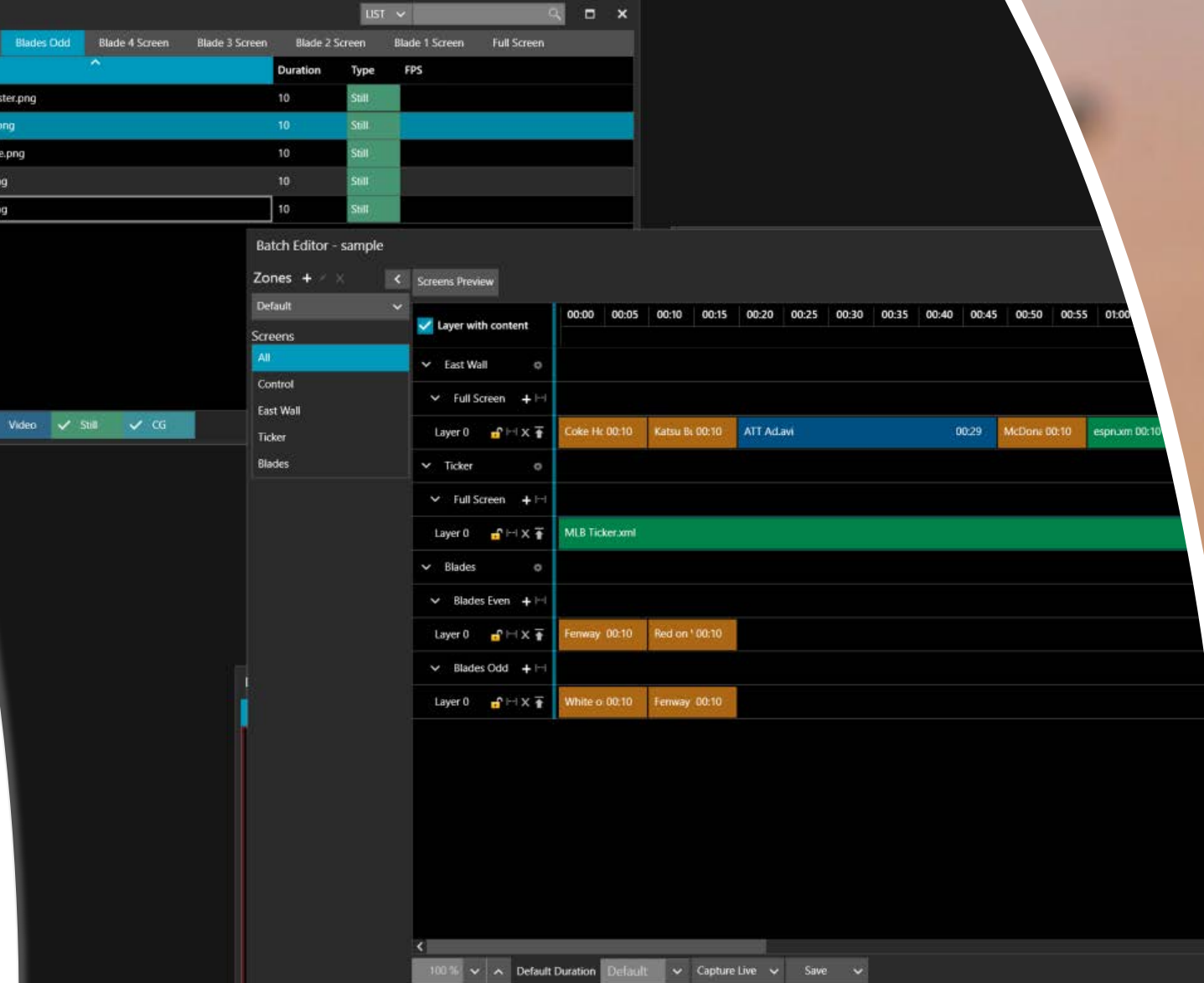


TECHNOLOGY TOOLKIT:

- LED
- T/OLED
- LED Glass
- T/LCD
- Projection mapping
- Architectural Lighting
- Kiosks
- On Prem/Cloud CMS
- Distributed Video
- Integrated Audio
- Broadcast Systems
- Facial Recognition
- Augmented Reality
-and more!

LiveSync ANC's Control System Platform

- Flexible user-friendly platform to create, control, modify & monitor spectacular digital signage experiences.
- Ability to schedule 24/7 programming and drag-and-drop takeovers of entire interior and exterior display networks.
- Future-Proof platform for any plug-ins, expansions, IPTV, or additions.
- Sponsor Exposure Reports And See What Is Playing In Real Time.
- LiveSync Venues:
 - WinStar World Casino & Resort, Gold Glove Bar & Dodger Stadium, BetRivers.com Sports Lounge & Wells Fargo Center, Bankerslife Field House
 - Westfield World Trade Center, Pier 17 at South Street Seaport and Moynihan Train Hall as well as major live events.





ANC

ENGINEERING THE
unforgettable