

**INDEX DESCRIPTION**

Daily assessments for Oman crude partials with the option of physical delivery.

**INDEX DETAILS**

Start date	1-Jul-2020
Commodity	Crude
Frequency	Daily
CCY / UOM	USD / BBL
Precision	3 decimal places
Periods	1, Month
Data types	Index
Pricing basis	Flat
Delivery basis	FOB Partial Cargoes
Trading hub	Middle East
Timezone	Asia/Singapore
Holiday calendar	Holidays_GX_Singapore

**INDEX QUALITY SPECIFICATION**

Oman crude (API 31.3, Sulphur 1.14%).

**CRITERIA FOR INCLUSION**

The assessment reflects the physical spot market value of Oman crude, in parallel with the front-line GX0000097 Crude Oil Dubai Partials assessment.

Contract size	25,000 bbl
Assessment range	2 months forward from calendar month
Destination restriction	None
Trading window	1600 - 1630

Each Oman crude partial can be used between a seller-buyer pair to converge to a full 500,000-barrel cargo for physical delivery.

In Oman partials trading, sellers typically declare either Oman or, as an alternative deliverable grade, Murban upon trading a total 500,000 barrels worth of partials with the buyer.

If the seller declares a Murban cargo, the buyer pays an additional fee, called a quality premium, to the seller for the cargo.

**OMAN**

Load Port: Mina Al-Fahal Terminal, Oman

**MURBAN**

Load Port: Fujairah/Jebel Dhanna, UAE

**INDEX TIMES****TIME DETAILS**

1630 Singapore close

**CALCULATION APPROACH****TRADE DATA APPROACH**

	Y/N
Priority to reported and concluded transactions	Y
Sole-sourced data from trading principles accepted	N
Inter-affiliate data accepted as valid	N

GX may consider bids, offers and swaps and futures-derived implied prices alongside trades if these are deemed more representative of market value at the midpoint of the assessment period.

The assessment takes into account trades for Oman partials, provided the traded levels are within the band of competitive bids and offers standing at the end of the open market trading session. The crude is assessed at the point of loading.

If partials trading leads to delivery of physical cargoes, this will also be taken into account for the assessment.

**ALIAS DEFINITIONS**

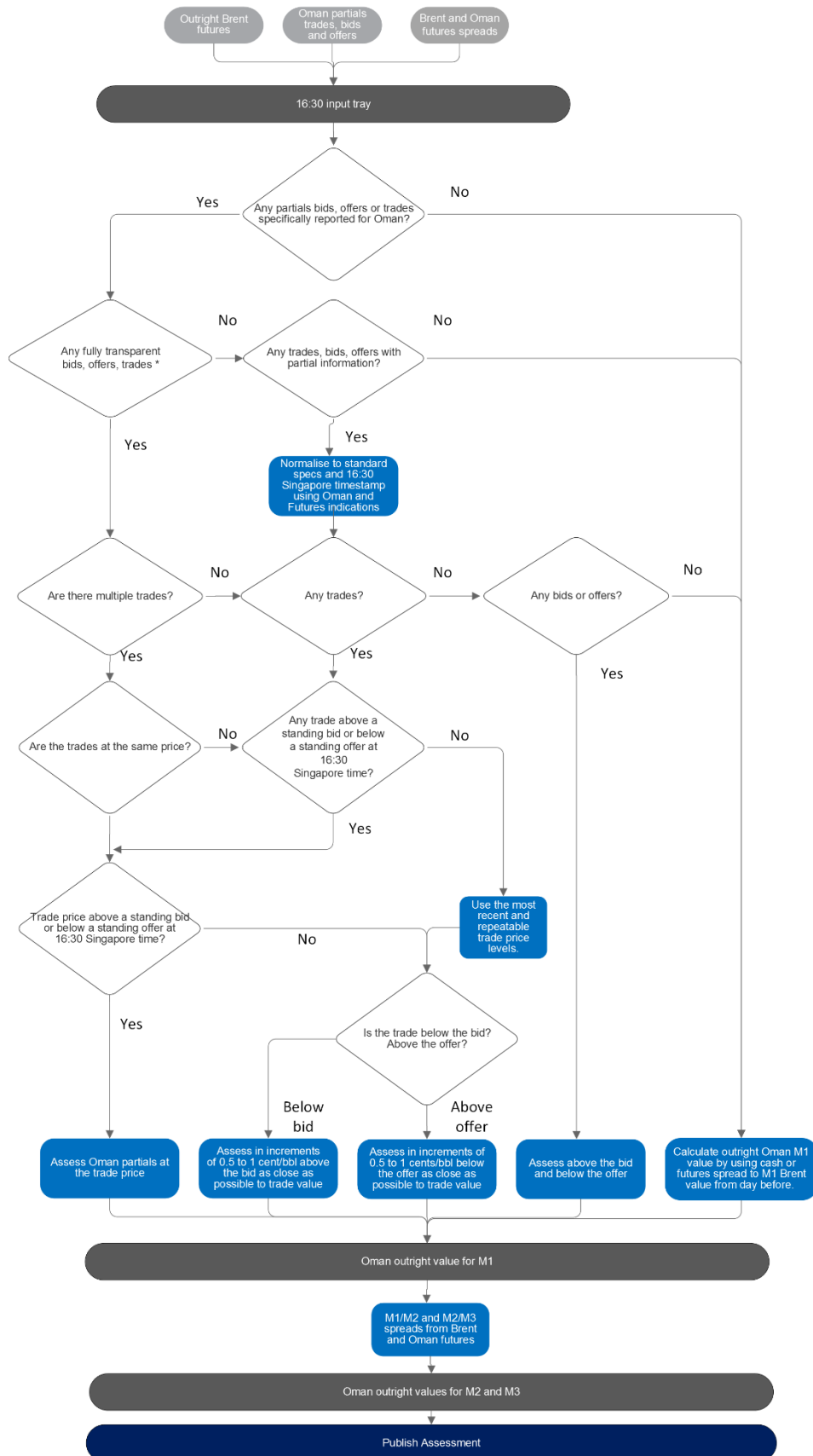
None

**FACTSHEET INFORMATION**

Factsheet version	1.0
Factsheet valid from	1-Jul-2020
Factsheet valid to	(ongoing)



## CALCULATION DETAIL



\* Containing: Cargo Size, Exact Price, Price Basis, Buyer, Seller and Trade timestamp