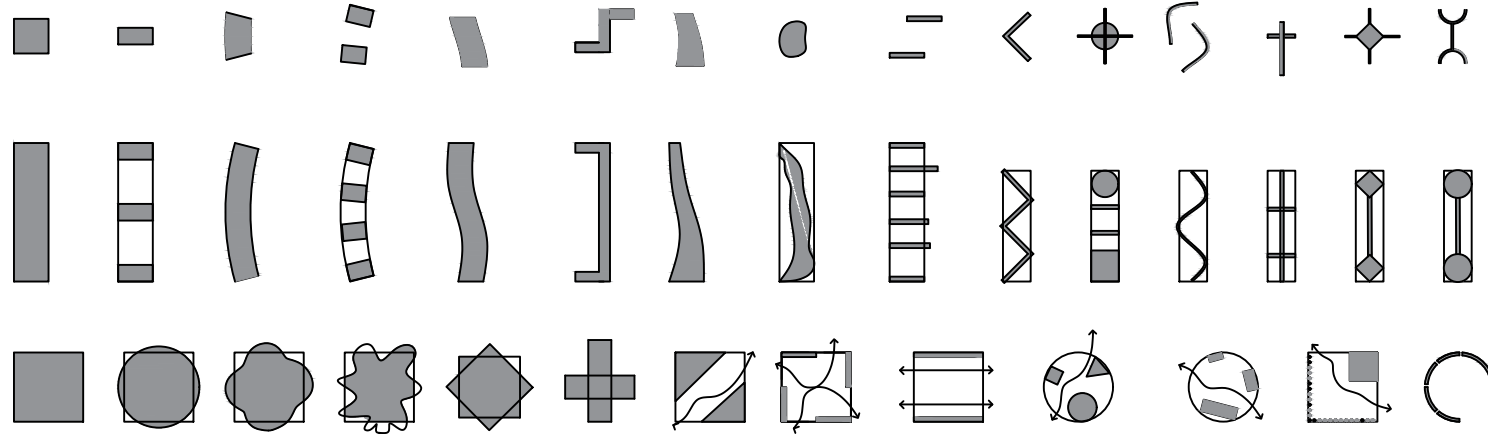
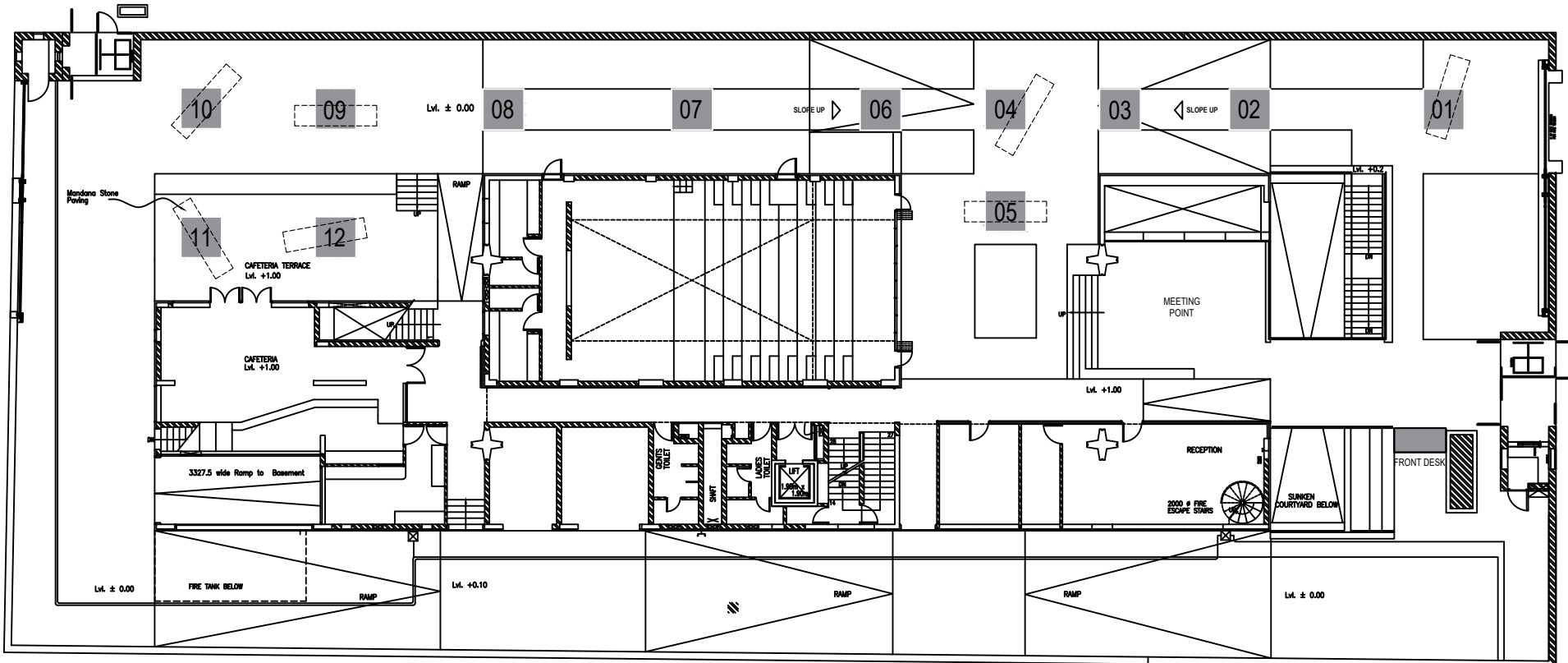


Exhibits/ Installations:



notional plan variations suggested with the hope that the participants will arrive at their own interpretations beyond these.

INSTRUCTIONS FOR PARTICIPANTS



ALLIANCE FRANCAISE de DELHI GROUNDS (GROUND FLOOR PLAN)

The layout of the 20under35: 11th DXD Exhibition this time around has been arrived at while keeping in mind the prevailing COVID-19 conditions/ restrictions. The exhibits/ installations, therefore, have been located mostly outdoors and spaced out to maximize social distancing. Rise to the occasion with your out of the box responses.

A. Location

- Available locations are as under:
 - AFD Grounds Based: 1, 4, 5, 9,10
 - AFD Pergola Based: 2, 3, 6, 7, 8
 - Café' Terrace Based: 11, 12
 - Gallery Based: 13, 14, 15, 16, 17
 - Gallery Courtyard Based: 18, 19, 20
- Locations to be allotted on first come first served basis keeping in mind equitable distribution of design domains.
- Participants must get in touch with DXD Exhibition Coordinator to fix their locations.
- Participants are expected to share the concept/ idea of their exhibit/installation in advance with the DXD Exhibition Coordinator by email.
- Participants are advised not to commence any fabrication without receiving his go ahead.

B. Permissible Size

- Max. Ground Area / Participant : 4 sq meters/ max length being 4 meters.
- Minimum Size/ Participant: no limit, must be visible/ audible
- Maximum Height: design driven + dependent on available conditions at the chosen/ allocated location
- Participants may check on location specific liberties possible, if any, with the DXD Exhibition Coordinator

C. Exhibit/ Installation: Form / Expression

- To be determined by the participant. May be:
- 2 or 3 dimensional
 - Direct/matter of fact
 - Narrative/installation based
 - Static/mobile/interactive
 - Low-tech/high-tech/multimedia
 - Medium may/may not be the message

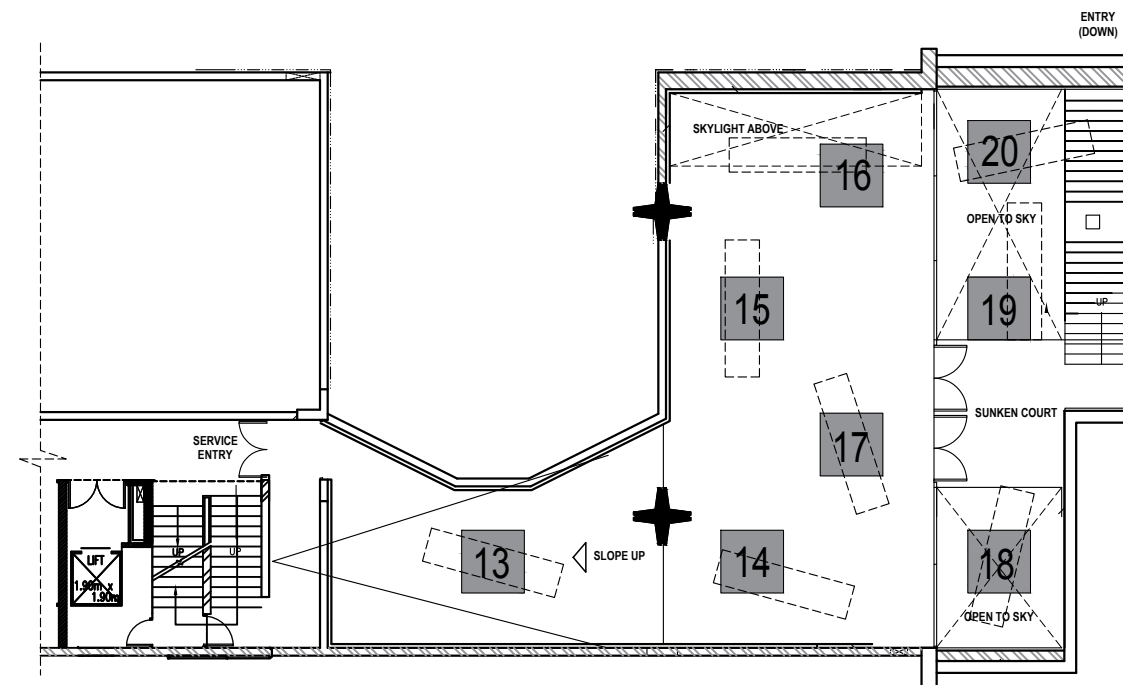
D. Knowing the Premises

- Participants may visit the AFD Grounds & the Galerie Romain Rolland independently or by prior arrangement.
- Participants must refer to the photographs and the drawings (plan, section) of the premises.

E. General Instructions

- The geometry of each location as indicated in the drawing is only notional and does not represent the floor outline of the exhibit except that of the pergola locations. It only indicates the maximum permissible covered area (gray square) and the adjustable variant with maximum permissible length (dotted rectangle).
- You are advised to choose your plan outline, shape and size to suit your design idea as long as it does not break the maximum area/ length restrictions.
- All the ground, cafe terrace, gallery, sunken court-based exhibits/ installations are expected to be island like, visible/ accessible from all sides or walk-through variety - single or multiple plainer / 3D entities.
- All the pergola-based exhibits/ installations are of fixed size (2 x 2 meters) and are expected to be gateway like walk- through variety, visible/ accessible only from within - single or multi plainer/ 3D entities. A basic enclosing framework of the pergola will be provided by DXD.
- All AFD grounds, cafe terrace, gallery, sunken court-based exhibits/installations (15 out of 20) must be fully or partially weather proof as it can rain in Delhi in the months of February/March.
- Locations 2, 3, 6 and 13 are situated on mildly sloping ramps.
- The final orientation of your proposed exhibit/ installation at your chosen/ allotted location will be determined after receiving your final design idea.
- All exhibits/installations should be self-supporting. However, anti-gravity systems may be employed wherever feasible.
- Subtle and suitable physical connections may be made between the exhibits/installations and the available surrounding features at the selected location, if so desired.
- As the Exhibition is on only during daytime, no artificial lighting maybe taken into consideration except in case of the Gallery based locations.

INSTRUCTIONS FOR PARTICIPANTS



GALLERIE ROMAIN ROLLAND (BASEMENT FLOOR PLAN)