

# 18,500 RSF 2 STORY JEWEL BOX BUILDING

LOCATED IN IRVINE NEXT TO JOHN WAYNE AIRPORT  
LEASING OPPORTUNITY



**A STREET  
PARTNERS**

**18851 BARDEEN**

*Irvine, California*

FOR LEASING INFORMATION

CONTACT A STREET PARTNERS AT 949 381 5100

OR VISIT [ASTREETPARTNERS.COM](http://ASTREETPARTNERS.COM)

# 18851 BARDEEN

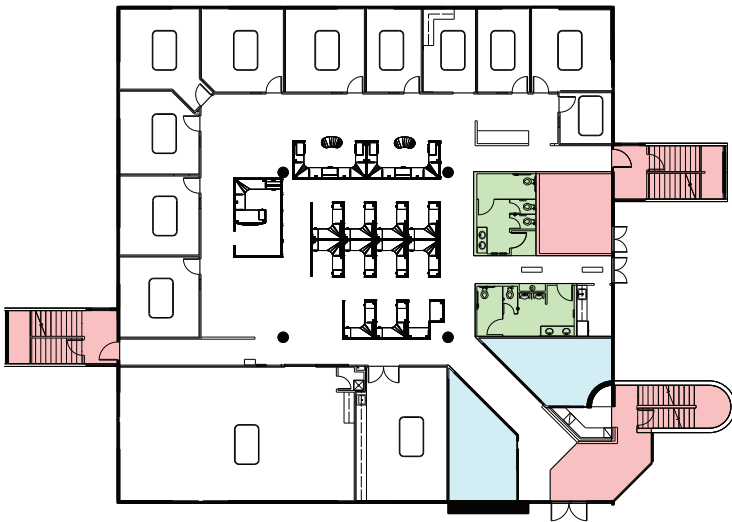
*Irvine, California*

## PROPERTY PROFILE

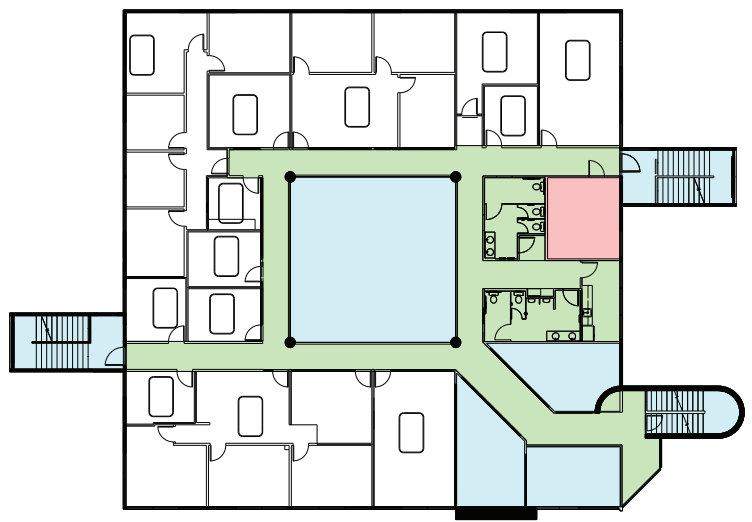
- A fully-furnished jewel box stand-alone building located in the Airport Market next to John Wayne Airport.
- 1st floor has 11 private offices, open area with 26 workstations, conference room, private restrooms, and kitchen.
- 2nd floor has mix of private offices and large collaboration rooms, kitchen, private restrooms and separate entrance.
- Full creative tenant improvement package available for credit tenant.

## FLOOR PLAN

- 1st Floor - 10,500 RSF



- 2nd Floor - 8,000 RSF



**FOR LEASING INFORMATION,  
CONTACT A STREET PARTNERS AT 949 381 5100  
OR VISIT [ASTREETPARTNERS.COM](http://ASTREETPARTNERS.COM)**

**BLAINE  
ANNETT** PARTNER

[blaine@astreetpartners.com](mailto:blaine@astreetpartners.com)

License No. **01861733**

**COLBY  
ANNETT** PARTNER

[colby@astreetpartners.com](mailto:colby@astreetpartners.com)

License No. **01859824**

**MORGAN  
LIEBER** SENIOR ASSOCIATE

[morgan@astreetpartners.com](mailto:morgan@astreetpartners.com)

License No. **01967995**

The accuracy of all information regardless of source, including but not limited to square footages and lot size, is deemed reliable but is not guaranteed and should be independently verified through personal inspection by and/or with the appropriate professionals.