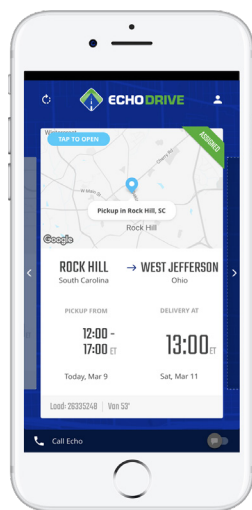
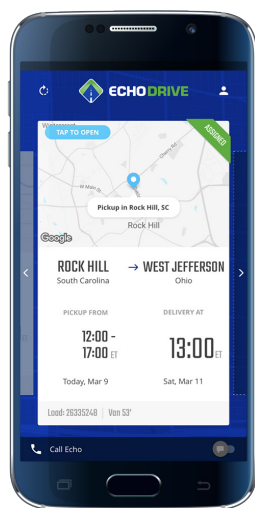
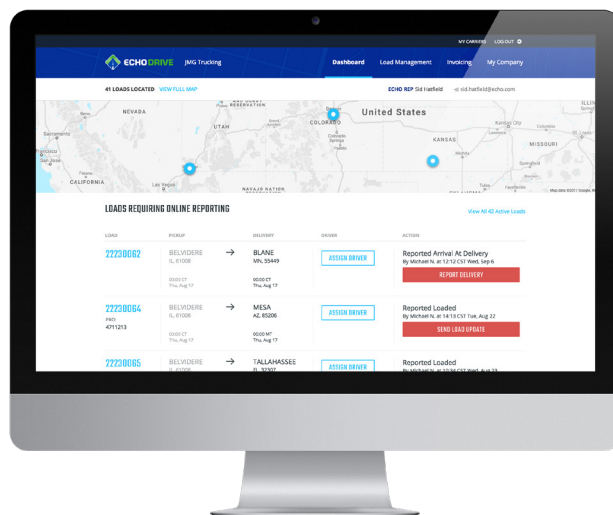


Put Communication and Load Management on Cruise Control with EchoDrive™

The new EchoDrive app and web portal provide carriers with more flexibility, transparency, and control. Drivers get fewer phone calls asking for shipment updates, and dispatchers get a more efficient way to manage their drivers

Dispatcher Web Portal Benefits Include:

- Full fleet overview with ability to manage loads and drivers
- Visibility into your Echo shipment volume history
- Complete load visibility during shipment process
- Invoice portal to view current and past receivables
- No manual re-entry of data
- Ability to share load info with one click



Driver Mobile App Benefits Include:

- Full document upload capabilities
- Load info collected in one place
- Convenient ability to view all stops
- Real-time tracking
- Reduced check-in phone calls
- Easy-to-use, single-touch interaction
- Privacy control options
- Android and iOS device compatibility

From load details to invoice updates, EchoDrive puts all the information you need at your fingertips in one simple, easy-to-use portal. Our load management tool keeps dispatchers organized and gets drivers back on the road.



Sign up for EchoDrive today!
Contact your Echo carrier representative to learn more.