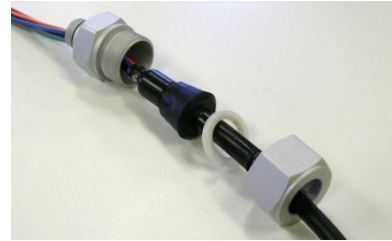
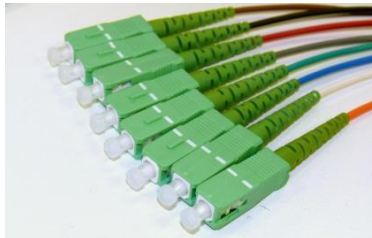


CF FIBER SERVICE NODE CABLE



CF Fiber Service Node Cable

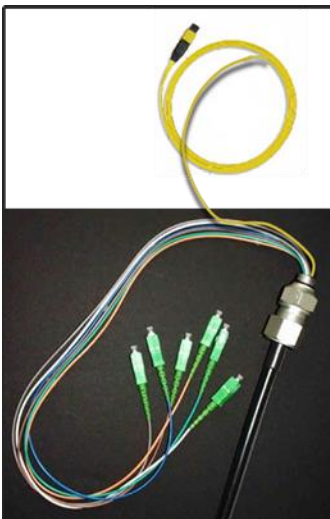
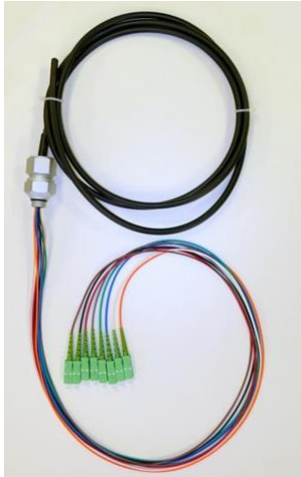
The C Fiber Service Node Cable assemblies are manufactured using FFT (Floating Fibre Technology). When furcation tubes are glued to the end, or the cable fiber bending during temperature changes may cause increased attenuation. With FFT, the fibers are free to move within the transition piece and furcation tubing as the cable expands and contracts. This eliminates any attenuation changes due to fiber bending at the transition point during temperature changes.

Cable Assembly Testing and Specs

- Guaranteed to match the published specifications
- Can be supplied with test data.
- Checked for end-face geometry using interferometer.
- Tested 100% for insertion and return loss.
- Cable assemblies meet Telcorida GR-326 specifications
- Cables meet Telcorida GR-20.

Features and Benefits

- FFT minimizes fiber bending and breakage from temperature
- Cable pullout strength of 400 lbs
- Fibres fanned out with furcation tubing
- 10 pound connector and furcation tubing
- Kevlar reinforced furcation tubing
- Standard 5/8" metal grommet for input ports
- Compact grommet to minimize protrusion outside of node
- Bend resistant fibre available
- Armoured central loose tube or Dielectric central loose tube
- Available cable length 1m up to 6000 m



CF FIBER SERVICE NODE CABLE

Ordering Information

CF	NP	A	E	-	C	X	-	06	-	B	X	-	0030	M
	1	2	3		4	5		6		7	8		9	10

1. Connectors on One End or both ends

- NP One end (pigtail) (Standard)
NJ Two ends (jumper)

2. Fibre Type

- A Enhanced Singlemode (ESM) (Standard)
B ESM BendBright
C BendBright xs

3. Cable Type (Outside Plant)

- A Central Loose Tube Armored 2F-12F (Standard)
B Central Loose Tube Unarmored Dielectric 2F-24F
C Central Loose Tube Armored Dielectric 12F or 24F
D Indoor/Outdoor RISER Unarmored Dielectric 1F-24F
E Indoor/Outdoor PLENUM Unarmored Dielectric 6F-12F

4. Fiber Count

- 01 One Fibers (RISER ONLY)
02 Two Fibers
04 Four Fibers
06 Six Fibers (Standard)
08 Eight Fibers
12 Twelve Fibers
24 Twenty-Four Fibers

5. Breakout & Leg Length Style

a) End One

- A 0.9 mm x 24 inches
B 0.9 mm x 36 inches
C 2.0 mm x 24 inches
D 2.0 mm x 36 inches

b) End Two

- A 0.9 mm x 24 inches
B 0.9 mm x 36 inches
C 2.0 mm x 24 inches
D 2.0 mm x 36 inches
X Pigtail Styles (standard)

6. Grommet Type

- A 5/8" 24 Node Prep Std Aluminum Grommet
B 5/8" 24 Node Prep Nickel Plated Brass Grommet
C 5/8" 24 Node Prep Long Grommet

7. Connector Type & Quantity (1-24 based on Fiber Quantity)

- A SC/UPC
B SC/APC (Standard)
C FC/UPC
D FC/APC
E FC/UPC
F FC/APC
G LC/UPC
H LC/APC
I LC/UPC Duplex
J ST/UPC
K MTP/APC (Up to 12 Fibers)

8. What is the Second Connector Type?

- A SC/UPC
B SC/APC (Standard)
C FC/UPC
D FC/APC
E FC/UPC
F FC/APC
G LC/UPC
H LC/APC
I LC/UPC Duplex
J ST/UPC
K MTP/APC (Up to 12 Fibers)
X NA Pigtail Style (Standard)

9. Accessories

a) Grounding Strap on Cable

Y= Yes N=No

b) Pulling Grip

Y= Yes N=No

10. Cable Length

1 to max 6000 meters

11. Length Unit Measure

- F Feet
M Meters (Standard)



telecommunications solutions inc.

650 Rupert Street | Unit #6 | Waterloo ON | N2V 2R8
Phone: 519.748.4411 | 1-877-900-7996 | fax: 519.748.0466
customerservice@connect-telcom.com

www.connect-telcom.com