

CONNECT



NO LASH LINE SYSTEM™

Your Pipeline in the Sky



NO LASH LINE SYSTEM™ creates Your Pipeline in the Sky

SIMPLE AND SAFE

A Technician can install the **NLLS** by placing, spin & snap over the existing messenger or self-support cables. A Terminal Clamp is installed at each termination.

Step two is to place a Rodder & guide tool through the **NLLS**. The Guide Tool can pass through multiple pre-installed cables. The cable can be pulled through your open air duct (**NLLS**) by attaching cable direct to the Rodder or a pull rope.

Because of this Simple construction method, a technician installer requires less expertise and less training than lashing experts. The **NLLS** simplifies & provides additional safety on your railroad, highway and river crossings. Since most of construction with the **NLLS** can be done at utility poles without excessive heavy equipment or tools, dangerous situations, injuries and risks can be reduced with **NLLS** construction.

• CONSTRUCTION METHODS / PROCESS

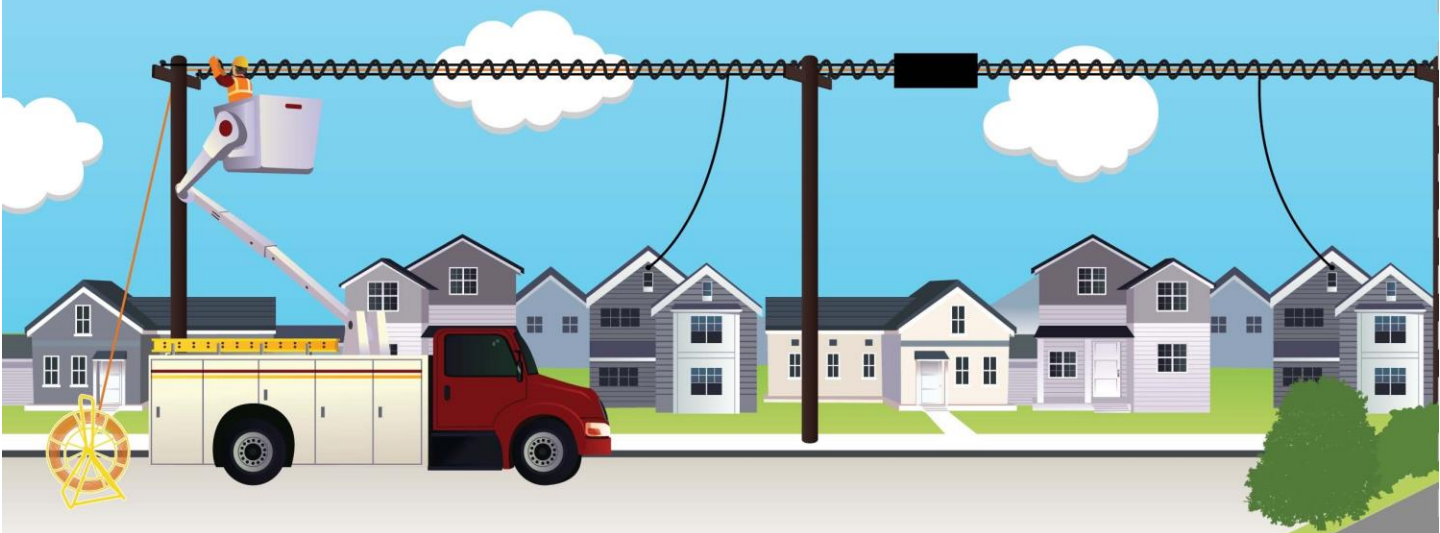
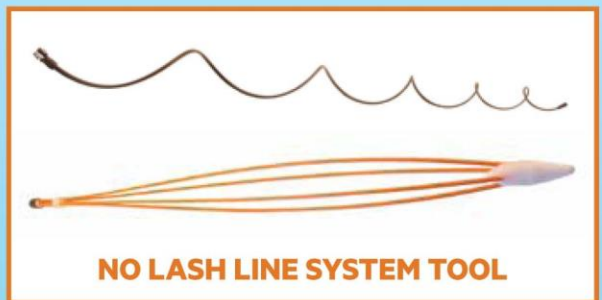
- Decreased craftwork expertise
- Reduced training requirement
- Less Tools and Equipment

• REDUCE RISK EXPOSURE - STREET, RAILROAD, WATER CROSSING

- Less Traffic control
- No low hanging cables reducing danger

• NO NEED TO ELEVATE HEAVY TOOLS

- Reduce Injuries
- Reduce accident Risk & property damage

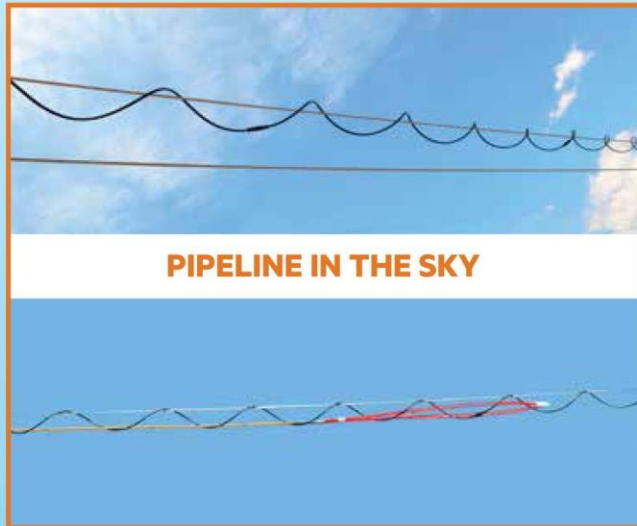


The **No lash Line System (NLLS)** was designed and produced in the late 90's for FTTH build in Tokyo Japan.

The **NLLS** is very Simple, Safe, Productive and Efficient product choice for placing cable and managing drops on a messenger or existing cables. The **NLLS** produces today's system in preparation for tomorrow's upgrades. The future build will be easier and less expensive. The **NLLS** offers opportunity to install advance pre-positioning production before deploying the Fiber. The **NLLS** is used by Telecom, Broadband, and I-net providers throughout Japan. From Northern to southern Japan, over the past 16 years **NLLS** has proven itself in these extreme weather conditions such as the North with the existence of floating Ice Bergs to the south with multiple annual Typhoons. Lashing became a thing of the past.

PRODUCTIVE AND EFFICIENT

Once the **NLLS** is installed, you will never need to Lash again. The pipeline for future construction and maintenance is in place. Placing new cables, removing old cables and changing the route can be done simply without Lashing. The **NLLS** will reduce Make-ready, tree trimming with speedy installation.



• PIPELINE IN THE SKY

- Easy adding, removing and changing cables
- Easy routing
- No Need to Overlash Again
- Enhance Plant removal safe and easy
- Reduce Multiple Customer Easement Access
- Reduce Customer complaints & property damage by less access requirements verses lashing & Jigging procedures

• MAKE-READY

- Reduce time & Labor costs
- Reduce the need for Re-engineering
- Productive cable placement will Gain your new subscriber sooner than later

• COST EFFECTIVE

- Reduce Labor steps
- Reduce Tree Trimming
- Eliminate broken lashing wire & maintenance
- Increased Customer satisfaction
- Reduce J-Hook attachment Fee's

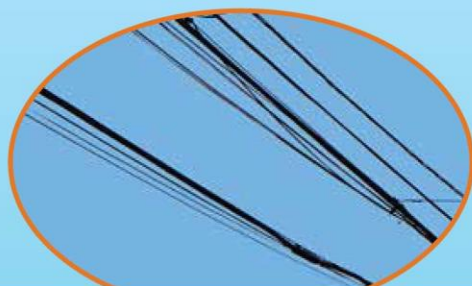


YOU CAN PLEASE YOUR CITY BY CONCEALING SERVICE DROPS IN YOUR PIPELINE IN THE SKY

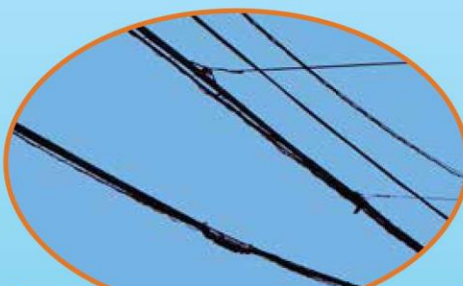
RESOLUTION FOR SERVICE DROPS + FIBER DROP MANAGEMENT

The **NLLS** offers versatility for Fiber & service drop management by extending or multiplying fiber drop installations only when needed.

- Reduce and Consolidate Fiber Splice locations
- Longer Fiber drops decrease overall build costs
- Remove cost of placing advance Fiber drops for unknown subscribers
- Organizes drops internally & Minimize the clutter of service drops
- Reduce additional J-Hook Pole attachment expenses
- Reduce time & labor expense of Overlashing Multi-drop environments



WITHOUT NO LASH LINE SYSTEM



WITH NO LASH LINE SYSTEM





NO LASH LINE SYSTEM™

Your Pipeline in the Sky

VIDEO LINKS:

System Overview: https://youtu.be/dS41fko_fFI

D- Lash Installation: <https://youtu.be/GYb4z6611ak>

Copper mining Installation: <https://youtu.be/KyWQIV89PcA>

Neutral Line Installation: <https://youtu.be/K8vYt5sFJOI>

Corner Pull Installation: <https://youtu.be/lfgNJ6sBfyg>

Road Crossing Installation: <https://youtu.be/FpYbmbSnPOg>

Set Up: <https://youtu.be/HevkiBuL-Vw>

