

East Gippsland Fires 2019-20

Built Recovery Sub-plan



Table of Contents

About this built environment recovery sub plan	3
Background to the disaster	4
Summary of impacts as at August 2020	4
Residential	4
Farming	4
Commercial / industrial	5
Infrastructure	5
Purpose of this sub-plan	6
Goals, activities, and framework for recovery	7
Framework for recovery	7
Recovery goal – built environment	7
Recovery objectives	8
Agencies and partners involved	9
Roles and responsibilities of partners	9
Governance, leadership, and delegations	10
Recovery governance	10
Approach to recovery of the built environment	11
A community-led recovery management approach	11
Recovery monitoring, review, and evaluation	13
Deliver a clean-up program to support landholders to rebuild – as at 30 July 2020	13
Deliver rebuilding support and advice to assist landholders to rebuild and enhance the resilience and sustainability of housing at an affordable cost	13
Restore public assets (e.g. roads, community open space assets, visitor sites)	13
Support the rebuilding of fencing and related agricultural infrastructure	13
Key challenges and risks	14
Links to the community recovery committees	15
Working Action Plan	16
Private and Public Assets	16
Clean Up	18
Temporary Housing	19
Planning and Building	20
Public Assets	21
Transport and Roads	24
Telecommunications	27
Energy Services	28
Drinking Water / Sewerage	29

About this built environment recovery sub plan



Evacuees from Mallacoota step off HMAS Choules' Landing craft as they arrive at HMAS Cerberus.

The East Gippsland Built Recovery Working Group has developed the Built Recovery Sub-plan as an agreed approach to managing and implementing built recovery activities following East Gippsland bushfires which burned throughout the region from November 2019 until March 2020.

Residents of East Gippsland regularly deal with seasonal fires, but over the past few years they have also lived with severe drought.

The fires that burnt through the summer of 2019-20 were extensive and impacted every part of the shire, particularly from a social and health perspective. There were significant property losses, including homes and Aboriginal heritage sites, and extended periods of isolation for residents, towns and farms.

The Australian Defence Force evacuated people from some towns, the largest of which was Mallacoota. The scale of the fires meant a state of disaster was declared in six local government areas, including East Gippsland, the impact on our community will continue for many years to come.

In the wake of this event, the Victorian Government established Bushfire Recovery Victoria to work with local government and fire-impacted communities to coordinate recovery.

Immediately after the fires, national and state-wide restrictions were put in place to manage the global COVID-19 pandemic. This has been a significant complication for the recovery of individuals, families and communities across East Gippsland.

Background to the disaster

On 21 November 2019, lightning strikes ignited fires across eastern Victoria in the Hume and Gippsland emergency management regions. Subsequent fires increased the extent of the disaster most notably in the Mallacoota and Omeo districts.

By the time they were all contained in February 2020, the fires had impacted more than 118 communities, damaging numerous houses, public infrastructure such as roads, bridges, and coastal infrastructure, and fencing and other agricultural infrastructure.

Find out more in the East Gippsland Recovery Plan.



Destroyed home. Image: courtesy Salvation army

Summary of impacts as at August 2020

Residential

Dwellings	Total
Primary places of residence destroyed	244
- Other dwellings destroyed (incl. flat, caravan, holiday house and holiday rental)	115
Primary places of residence damaged	33
- Other dwellings damaged (incl. flat, caravan, holiday house and holiday rental)	18
Sheds	Total
Destroyed	532
Damaged	45

Farming

Dwellings	Total
Primary places of residence destroyed	17
- Other dwellings destroyed, includes flat, caravan, holiday house and holiday rental	4
Primary places of residence damaged	17
- Other dwellings, includes flat, caravan, holiday house and holiday rental	0

Summary of impacts as at August 2020

Commercial / industrial

Commercial / industrial	Total
Destroyed	12
Damaged	3

Source: Datalink Internet Systems Pty Ltd

As a result of COVID-19, secondary impact assessments (SIAs) were suspended in March 2020. As at 30 July 2020, approximately 60 SIAs are still to be scheduled for completion. All remaining SIAs are scheduled for completion by 30 September 2020.

Infrastructure

Fencing	Total
Agriculture Victoria (AgVic)	5,206km
Department of Environment Water Land and Planning (DEWLP)	1,300km
East Gippsland Catchment Management Authority (EGCMA)	100km
Roads/Tracks	Total
Regional Roads Victoria (RRV)	420km
East Gippsland Shire Council (EGSC)	650km
Department of Environment Water Land and Planning (DEWLP)	7,500km
Bridges/crossings	Total
Regional Roads Victoria	2
East Gippsland Shire Council	15
Department of Environment Water Land and Planning (DEWLP)	394
Parks Victoria (PV)	89
Fire towers	8
Recreation areas, visitor sites and community open space assets	Total
Department of Environment Water Land and Planning (DEWLP)	24
Parks Victoria (PV) - (Key sites and National Parks)	6
East Gippsland Shire Council (EGSC)	7
Telecommunications	Total
Transit Link	60km
Property Connection interruptions	950
Energy services	Total
Transformers	2
Pole replacement	165
Water	Total
Drinking water – additional operating	\$420,000
Drinking water upgrades	\$500,000
Sewerage – additional operating	\$150,000

Purpose of this sub-plan



The Built Environment Recovery Sub-plan is a sub-plan of the East Gippsland Recovery Plan.

Built environment recovery considers the direct impacts to residential, rural, commercial and industrial infrastructure as well as essential services infrastructure that supports the transport network, communication and data network/systems, energy supplies, water supply, treatment and sewerage and public buildings and assets infrastructure in East Gippsland.

This document brings together planning at the regional and municipal levels in one sub-plan and seeks to coordinate and align state-wide recovery programs with regional and community recovery initiatives to ensure a coordinated approach to the built environment recovery.

State and regional recovery plans support community-led recovery. This sub-plan will be informed by themes emerging from community recovery plans and raised by community recovery committees.

This version of the Built Environment Recovery Sub-plan reflects issues and priorities raised by communities and individuals to date through their engagement with a range of agencies.

Goals, activities, and framework for recovery

Framework for recovery

This sub-plan should be read in conjunction with the East Gippsland Recovery Plan, which sets out the approach and framework for recovery, including the East Gippsland Recovery Principles.

Community-led recovery is central to the approach and this sub-plan will be regularly reviewed and revised based on community feedback and issues and priorities identified by community recovery committees.

Recovery goal – built environment

Built environment recovery in East Gippsland will be led by the East Gippsland Built Environment Working Group and the goal is to assess and implement the recovery and rebuilding of private and public infrastructure and assets through a planned, coordinated and adaptive approach between community and partner agencies, based on continual assessment of impacts and needs.



Clean up. Image: courtesy BRV

Recovery objectives

The built environment recovery objectives are as follows:

- Support the rebuild of housing that is sustainable and resilient, safe, and affordable and meets the needs of our communities, including support services to assist communities through the planning and rebuilding processes.
- Rebuild infrastructure (roads, power, telecommunications, other community assets) that considers resilience and climate change at the core of its design and service principles and meets community needs. Insert image 6 Repairing roads
- Identify opportunities to improve community assets to enhance the safety of communities during future events.
- Ensure community consultation and involvement in relevant decision-making processes.
- Ensure risk reduction is considered in the rebuilding and reconstruction phase, including infrastructure and essential services, considering climate change, and enhancing resilience.
- Ensure protection of Aboriginal cultural heritage, places, and objects of cultural significance during rebuilding.
- Protection of heritage places areas and objects of community heritage value and significance.
- Deliver an assessment and voluntary clean-up program to assist landholders rebuild.



50km stretch of the Princes Highway (A1) between Cann River and the NSW border

Agencies and partners involved

The Built Environment Recovery Sub-plan has been developed to support the coordination of recovery activities across residential housing, commercial and industrial buildings, key infrastructure assets such as roads, bridges and public spaces as well as telecommunications, energy services, drinking water, sewerage and transport at the municipal level. Agencies will regularly update the Built Environment Working Group on recovery activities listed in the workplan, monitor delivery, and escalate issues as required.

The main recovery agencies and organisations are:

- East Gippsland Shire Council (EGSC)
- Bushfire Recovery Victoria (BRV)
- Agriculture Victoria (AgVic)
- AusNet Services
- Department of Transport (DoT) and Regional Roads Victoria (RRV)
- Department of Environment, Land, Water and Planning (DELWP)
- Department of Human and Health Services (DHHS)

- East Gippsland Catchment Management Authority (EGCMA)
- East Gippsland Water (EGW)
- Environment Protection Authority Victoria (EPA)
- Insurance Council of Australia
- Parks Victoria
- NBN Co
- Telstra

**Other agencies may provide services in addition to those listed.*

Roles and responsibilities of partners

The Built Environment Recovery Action Plan sets out roles and responsibilities of agencies and other organisations in accordance with the Emergency Management Manual Victoria.

All partners work to coordinate recovery activities to deliver the best outcomes for the East Gippsland community, in line with the objectives of this sub-plan.



Fiji Army clearing roads.

Governance, leadership, and delegations

Recovery governance

The Built Environment Working Group was established to coordinate recovery activities at a regional and municipal level and as a reporting mechanism for regional recovery efforts. East Gippsland Shire Council leads the Built Environment Working Group, which reports to the East Gippsland Recovery Committee.

Governance, decision-making and authorising arrangements are set out in the East Gippsland Recovery Plan, including in relation to working groups.

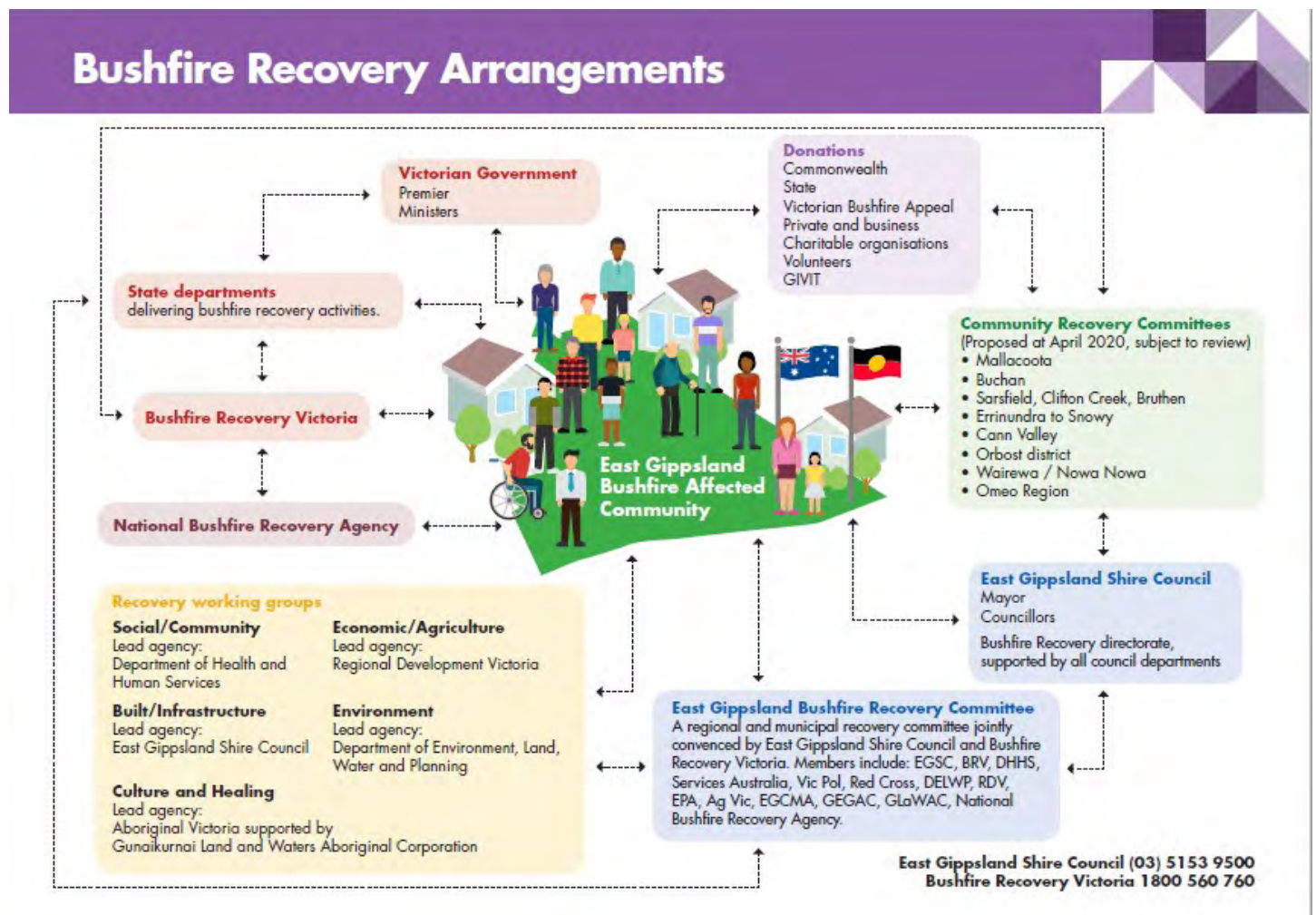
Recovery in East Gippsland is jointly led by East Gippsland Shire Council and Bushfire Recovery Victoria consistent with the approach set out in the Emergency Management Manual Victoria. The working groups report to the East Gippsland Recovery Committee and the East Gippsland Recovery Committee leads or chairs each working group.

The working group coordinates recovery activities but does not have additional decision-making authority. Where agreement regarding recovery activities cannot be reached the matter may be escalated to the recovery committee.

See an overview of recovery arrangements below.

Some issues cross the boundaries of different working groups and liaison between groups is required to ensure effective delivery, e.g.

- Short-term modular housing – social;
- New facilities to support visitation – economic;
- Fencing – natural environment;
- Ensuring that built environment projects are planned and delivered in a manner consistent with the rights of Traditional Owners – culture and healing.



Approach to recovery of the built environment

A community-led recovery management approach

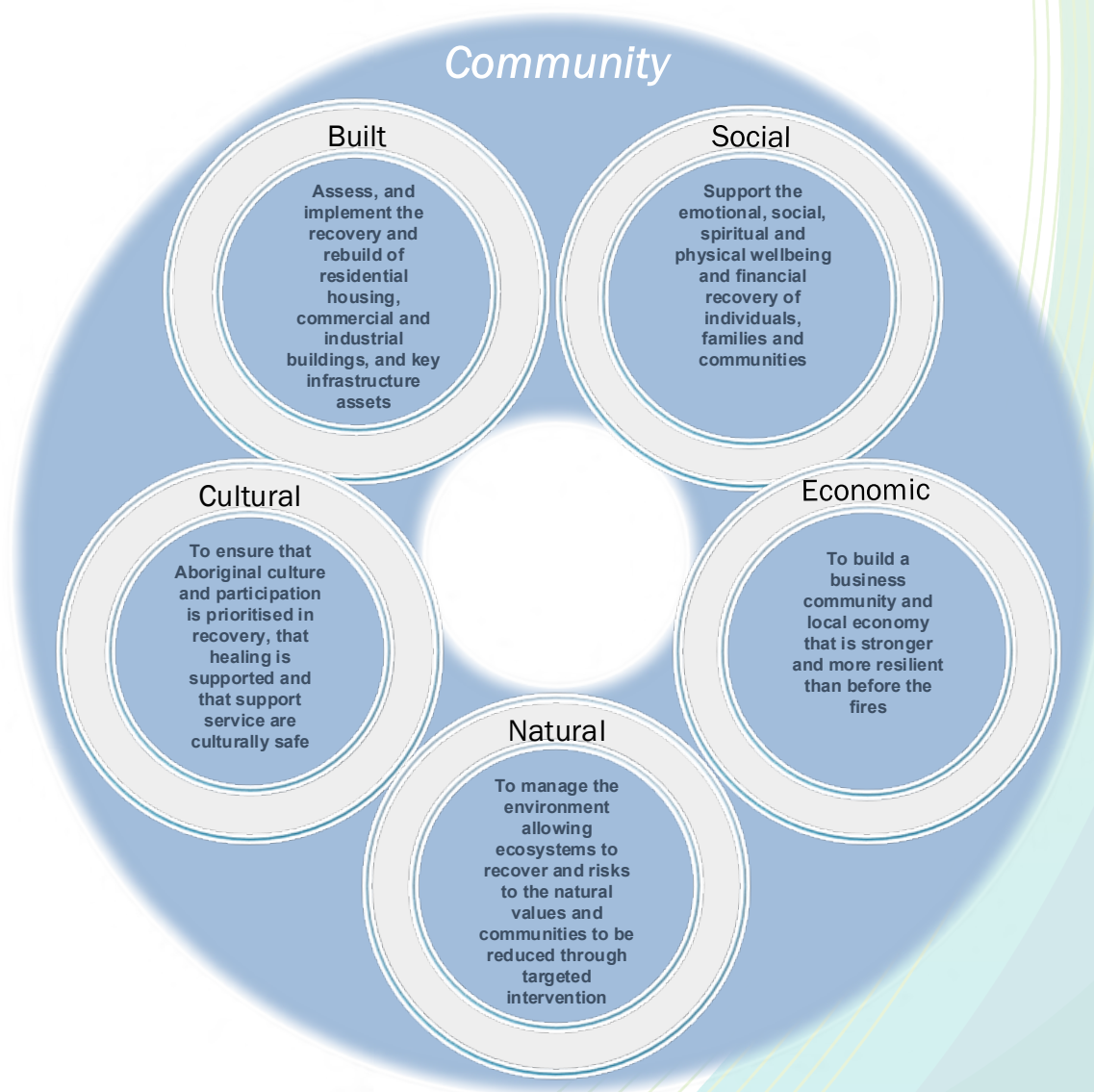
Recovery in East Gippsland will use a community-led approach, which moves beyond traditional community engagement. Local government and Bushfire Recovery Victoria will partner to support communities to establish and lead their own recovery planning process.

When the community is genuinely leading, the government's role is to support the community to

identify community recovery priorities and to develop a plan to achieve these.

The Built Environment Recovery Action Plan has been informed by issues and priorities raised by communities to date and will be revised as further information becomes available.

The plan sets out how we approach planning, coordination, and delivery of services to support communities in their recovery.



Priority actions, programs, and projects

An initial list of priority actions, programs and projects is outlined below (see the plan for more detail):

Deliver clean-up program to support landholders rebuild.	<ul style="list-style-type: none"> BRV are leading the delivery of a state-wide clean-up program and providing options for disposal waste.
Deliver rebuilding support and advice.	<ul style="list-style-type: none"> Council, with support from BRV will provide an advisory service with a focus on approval processes to assist landholders navigate the rebuilding process, support resilience and sustainability. BRV and Council will identify pathways to support landholders that may still find rebuilding difficult.
Restore public assets (eg roads, community open space assets and visitor sites)	<ul style="list-style-type: none"> Restoration of damaged roads and similar assets by Council, DELWP, PV and RRV (eg Mallacoota foreshore paths and boardwalks).
Support the rebuilding of fencing and related agriculture infrastructure.	<ul style="list-style-type: none"> Support to rural landholders to rebuild fencing and other agriculture infrastructure through provision of grants (BRV/AgVic) supporting the work of volunteers.
Improve the resilience of key road access routes to reduce the likelihood and/or duration of interrupted access to communities.	<ul style="list-style-type: none"> While restoring access and condition of damaged roads is a critical first step, the extent and duration of interrupted road access to communities was a critical issue associated with the event. There is a need to explore options to reduce the risk of road access being interrupted in future events to reduce timelines for restoring access. The Princes Hwy is a focus for this project.
Improve the resilience of telecommunications, water, and electricity infrastructure to reduce the likelihood of failure, particularly for remote communities, during future events.	<ul style="list-style-type: none"> Telecommunications (landline and mobile) and electricity supplies were interrupted early in the event for some remote communities and took extended periods of time to restore. This impacted community's capacity to access information during the event and reduced capacity of agencies to deliver effective relief. There is a need to explore and implement options to improve resilience of systems including education about use of systems during events.
Enhance and improve the resilience of community facilities to support community need, including the capacity to support communities during future events.	<ul style="list-style-type: none"> Community facilities played an important role supporting impacted communities during and after the event. This included relief centres, Neighbourhood Safer Places, places of assembly and community halls which were used by communities to provide relief support after the event. There is a need to review these facilities and identify opportunities to enhance facilities to better support communities in the event of a major natural disaster. Improvements might include installation water tanks, generators, or other power supply, supplies of relief goods etc.
Support and educate communities in their preparedness for disasters when key infrastructure fails.	<ul style="list-style-type: none"> Support communities to increase resilience and self-reliance in responding to infrastructure vulnerability.

Recovery monitoring, review, and evaluation

The Built Environment Recovery Working Group has identified priority recovery actions. To ensure the outcomes for built environment recovery are effective and reflect emerging and changing community needs, there will be continuous monitoring, review, and evaluation.

Deliver a clean-up program to support landholders to rebuild – as at 30 July 2020

Properties registered	943
Properties assessed	743
Properties - clean-up commenced	710
Properties - clean-up complete	692

Deliver rebuilding support and advice to assist landholders to rebuild and enhance the resilience and sustainability of housing at an affordable cost

Property owners engaged with support services for rebuilding	102
Property owners issued with permit	30
Property owners completed rebuild	

Restore public assets (e.g. roads, community open space assets, visitor sites)

Kilometres of roads impacted (Source RRV)	420
Kilometres of roads assessed	303
Kilometres of roads repairs commenced	97
Bridges and crossings lost	483
Bridges replaced	

Support the rebuilding of fencing and related agricultural infrastructure

Kilometres lost as at 30 June	6,606
Kilometres restored	

Improve the resilience of key road access routes to reduce the likelihood and/or duration of interrupted access to communities:

- Project milestones

Improve the resilience of telecommunications infrastructure to reduce the likelihood of loss of communication, particularly for remote communities, during any future events:

- Project milestones

Enhance and improve the resilience of community facilities to support community need, including the capacity to support communities during future events:

- Project milestones

Identify pathways for landholders that may find it difficult to rebuild:

- Project milestones

Support and educate communities in their preparedness for disasters when key infrastructure fails:

- Project milestones

Key challenges and risks

A range of challenges and risks are associated with the built environment recovery program, not the least being the scale and nature of the impacts (including the impacts on community associated with loss of private assets), the funding required for recovery works and the ongoing risks associated with further natural disaster events and the need to consider embedding resilience into the restoration and management of public and private assets.

Covid 19

Covid 19 has impacted recovery activities across the five recovery pillars or environments. In relation to built environment recovery, it has delayed completion of the secondary impact assessment and affected the way in which other services are provided (such as clean-up and rebuilding advice). It has also impacted the way in which CRCs can engage with communities to identify priorities. Alternative strategies are being implemented to ensure recovery activities continue.

Supporting individuals

Recovery planning needs to consider the range of needs of impacted community, including the need for more intensive support to navigate rebuilding processes. A high-level customer service and solution focussed approach is needed to assist some landholders navigate particularly complex rebuilding situations.

Further, six months on from the major impacts of the 2019/20 bushfires, some individuals impacted by the fires are being identified that have not accessed support services, including supports in relation to loss of private assets.

Policy changes and program development

Some responses to support built environment recovery require significant preparatory work, potential policy changes and funding (e.g. improving the resilience of telecommunication infrastructure). State and commonwealth governments require time to work through the policy changes. At the same time, while not all communities move at the same pace, some are moving into recovery more quickly than services and changes at the local, state and commonwealth governments can readily support.

Preparedness for the next season

Some communities have a focus on preparedness for the next fire season which provides a very real timeline for initial changes to improve the resilience and capacity of infrastructure.

Funding for restoration and improving resilience

Insurance, the national Disaster Recovery Funding Arrangements, and direct government funding allocations provide the primary funding sources for public sector recovery activities. Invariably there are gaps in the coverage of loss by these fund sources. For example, impacts on walking tracks, lookouts and boardwalks are not covered by DRFA and not all impacts are covered by insurance.

Activities to improve the resilience of public infrastructure, electricity supply and telecommunication are not typically covered by the above funding sources and so these items are subject to funding.

Similar challenges exist for impacted members of the community where existing insurance policies may not be sufficient to support rebuilding and replacement of private assets, particularly given contemporary planning requirements in relation to bushfire risk.

Gaps in existing programs

Notwithstanding the very significant support programs that have been implemented, some recovery needs will continue to be identified which are not covered by existing support programs e.g. hazardous trees and fire debris on both private and public land (including roadsides). While significant work has been completed to identify hazardous trees on roadsides, this was limited to areas impacting the traffic lanes and over time more hazardous trees are likely to be identified.

Data management

Currently data in relation to built environment impacts and recovery activities is distributed across a range of systems held by state and local government. In addition, information held by State Government is held in systems across different agencies. There is an opportunity to streamline and strengthen the built environment impact assessment and recovery approach through better integration of systems and data.

Links to the community recovery committees

The Built Environment Recovery Sub-plan has been informed by issues raised by the community to date. As the community recovery committees are established, new issues and priorities may be identified, and the action plan may be refined as required. This is a critical step in community-led recovery.

The focus to date has been on restoring impacted assets and strengthening the resilience of private and public infrastructure.

As community recovery committees identify projects requiring investment in community facilities and public infrastructure, these will be considered and may be included in this sub-plan. Note that many of these projects are expected to relate to improvements and upgrades to deliver improved social and economic outcomes.

Priority projects in other recovery environments also may result in the upgrade or construction of assets, e.g. economic recovery projects focusing on tourism may include new or upgraded facilities.

This sub-plan will be regularly reviewed to ensure it reflects community priorities.

Working Action Plan

The following action plan focusses on the restoration and repair of public assets and supporting the clean-up and rebuilding of impacted private assets. Further project planning is underway in relation to improving the resilience of public infrastructure, community facilities and energy and telecommunication systems.

Community Recovery Committees and the Economic Recovery Working Group may also identify new or upgraded built environment assets to support better social and economic outcomes e.g. new tourism facilities or experiences, or upgrades community facilities.

Several of non-government and volunteer organisations are continuing to provide support to East Gippsland landholders and communities in both clean-up and initial rebuilding works. These efforts are acknowledged and welcomed. They are however numerous and are not reflected in the action plan below. This does not lessen their significance for impacted communities.

Private and Public Assets

Recovery Goal	Recovery Activity	Timelines	Lead Agency	Support Agencies	Funding Status	Link to CRC	Link to Lead Agency Policy/ Plan	Status Report
Initial impact assessments to private and public assets.	Undertake Initial Impact Assessments (IIA) of bushfire affected properties.	Immediately post initial impact of event.	EMV	VicPol DELWP MFB	EMV		Emergency Management Act 2013 EMMV SERP MEMP	Successful completion of IIA's. Information provided to State and Local Government.
	Undertake Secondary Impact Assessments (SIAs) of bushfire affected properties.	Immediately post IIA completion.	EGSC	MAV	EMV		Emergency Management Act 2013 EMMV SERP MEM	Successful completion of SIAs, all impacted structures identified, case management referrals updated, information recorded and provided to State Government to inform relief and recovery actions.
	Undertake impact assessment of all bushfire affected public assets.	Immediately post initial impact of event.	EGSC	BRV RRV DELWP PV	EMV		Emergency Management Act 2013 EMMV SERP MEMP	Successful completion of assessments.
	Undertake assessment of all bushfire impacted fences on private and public lands.	Immediately post initial impact of event.	EGSC	BRV DELWP EG CMA AgVic	EMV		Emergency Management Act 2013 EMMV SERP MEMP	Successful completion of assessments to inform recovery and rebuild of fencing stock. Total loss is captured to inform relief and recovery actions.

Recovery Goal	Recovery Activity	Timelines	Lead Agency	Support Agencies	Funding Status	Link to CRC	Link to Lead Agency Policy/ Plan	Status Report
Initial impact assessments to private and public assets.	Update and maintain information systems and provide accurate data and mapping of asset loss/damage to key stakeholders.	Ongoing	EGSC	DELWP BRV	BRV		Emergency Management Act 2013 EMMV SERP MEMP	Validation of IIA and successful completion of SIAs and information provided to State and Local Government.
	Undertake continuous improvements in data validation to ensure consistent and accurate reporting across agencies.	Ongoing	EGSC	BRV DELWP AgVic	BRV			Data is accurate to inform recovery and rebuild and shared across agencies.
Provide accurate information and advice relating to public health.	Develop communications process to provide up-to-date, relevant, and consistent messaging to fire impacted communities.	Ongoing	EGSC	EPA BRV DELWP	BRV			Relevant information provided to affected communities through Community Newsletter, agency websites and Recovery Hubs.

Clean Up

Recovery Goal	Recovery Activity	Timelines	Lead Agency	Support Agencies	Funding Status	Link to CRC	Link to Lead Agency Policy/ Plan	Status Report
Provide accurate information and advice about property Clean-Up.	Provide advice to property owners and residents in response to bushfire related enquiries for Grocon Clean-Up registration.	August 2020	BRV	EGSC DELWP	BRV			Relevant information provided to affected communities and all impacted residents requesting clean-up are registered with Grocon.
	Ensure support and advice is available to communities to support timely decisions regarding clean-up of properties.	August 2020	BRV	EGSC DELWP	BRV			Community well informed & landowners signed up to participate in clean-up.
	Liaise with the BRV, EPA and Worksafe regarding commencement and delivery of site clean ups.	Ongoing	BRV	EGSC EPA Worksafe				Information obtained from Authority is relevant and up to date.
	Provide support, advice, and systems to manage effective waste disposal options from impacted properties and public land.	Ongoing	BRV					Clean-up process established and prioritisation of works is scheduled and communicated to all relevant agencies.
	Establish Fencing Stockpile sites for community to locate impacted fencing materials and ensure ongoing management of stockpile materials.	Ongoing	EGSC DELWP	BRV				Bushfire waste disposed of at approved landfills. Properties cleaned-up by Grocon.
	Establish clear processes for referrals, schedule of works, site clearance and issuance of certification to residents that the site complies with EPA requirements.	Ongoing	BRV	EGSC				Processes are clear and available for residents.
Provide accurate information and advice about the re-establishment of fences.	Provide fencing services via grants and volunteer organisations to re-establish fences damaged during the fires.	Ongoing	BRV	Blaze Aid EGSC DELWP Ag Vic EG CMA				All fencing asset loss in documented and funding streams identified and made available to community.
Provide accurate information and advice about the management of Hazardous Trees.	Remove all hazardous trees felled onto private assets i.e, fencing, ingress/egress.	Ongoing	DELWP	BRV EGSC				All hazardous trees and tree debris removed from private property and private assets.

Temporary Housing

Recovery Goal	Recovery Activity	Timelines	Lead Agency	Support Agencies	Funding Status	Link to CRC	Link to Lead Agency Policy/ Plan	Status Report
Establishment of temporary accommodation	Identify key services, resources, and support information to support residents through the rebuild process.	Ongoing	BRV DHHS	EGSC				Key services, resources and support information identified and embedded in the Recovery Hubs.
	Develop, approve, and implement Temporary Housing Policy.	May 2020	DHHS BRV	EGSC				Temporary Housing Policy has been submitted to all agencies for review, is approved and implemented.
	Assessment of applications for temporary accommodation.	Apr 2020	BRV DHHS	EGSC				Application process developed and implemented.
	Approve temporary accommodation structures to meet community needs.	Ongoing	BRV DHHS	EGSC				Approved and implemented.
	Review temporary accommodation site location in relation to land assessments.	Ongoing	EGSC	DELWP BRV				

Planning and Building

Recovery Goal	Recovery Activity	Timelines	Lead Agency	Support Agencies	Funding Status	Link to CRC	Link to Lead Agency Policy/ Plan	Status Report
To provide advice and information about rebuilding.	Identify key services, resources, and support information to support residents through the rebuild process.	Ongoing	EGSC	DELWP				Relevant information provided to affected community.
	Provide advice in relation to temporary and permanent dwellings and buildings in relation to building and planning provisions and processes.							
	Information provided on rebuilding via Fact Sheets and on web site, explaining requirements for different approvals and streamlined processes.	Ongoing	EGSC	BRV DELWP				Formalised approvals and processes that document the streamlined services – Land Capability/BAL/ Geotech/Land Management Plans/ Exemptions/Planning Provisions/ BAL Approved Designs (Housing).
	Develop a concierge service to support residents through the rebuild process.	Ongoing	EGSC	BRV				Framework for the rebuild support service is approved and implemented.
	Identify key services, resources, and support information to support residents through the rebuild process. Work closely with Aboriginal communities to ensure specific cultural needs are considered through the rebuild process.	Ongoing	EGSC	BRV AV GLAWAC				Key services, resources and support information identified and embedded in the Recovery Hubs.
To streamline planning requirements where possible for rebuilding.	Work with the State Government to introduce streamlined planning controls that enhance capacity to fast track rebuilding proposals.	Ongoing	BRV	DELWP EGSC				Streamlined planning controls introduced.
To align local rebuilding processes with state-wide directions.	Participate in strategic discussions concerning the rebuilding and reconstruction process.	Ongoing	BRV	EGSC DELWP				Environment, Planning & Building Department input into strategic discussions.
	Work with EG CRCs to ensure effective outcomes in relation to people being able to quickly rebuild on their damaged properties.	Ongoing	EGSC BRV					Planning permits & other related approvals/consents are considered quickly (streamlined and fast-tracked process).

Public Assets

Recovery Goal	Recovery Activity	Timelines	Lead Agency	Support Agencies	Funding Status	Link to CRC	Link to Lead Agency Policy/ Plan	Status Report
To assess public assets in fire affected areas.	Assess public assets in fire affected areas and make recommendations about both immediate and long-term repairs and/or reinstatement requirements.	Ongoing	EGSC DELWP PV					All building assets in fire affected areas inspected and audit report provided.
	Assess open space assets in fire affected areas and make recommendations about both immediate and long-term reinstatement requirements.	Ongoing	EGSC DELWP PV					All open space assets in fire affected areas inspected and audit report provided.
	Undertake an assessment of impact on fire management assets including fire towers.	June 20	DELWP					Detailed impact assessments and insurance claims for repair – note 3 towers confirmed lost.
	Undertake an assessment of recreation and historic assets within the fire footprint.	June 20	DELWP	PV				Detailed impact assessments and insurance claim reports.
	Undertake mapping of Council managed land areas to inform strategic and operational response.	Ongoing	EGSC					Inspections completed and audit report provided.
	Prepare program of works and estimate costs for reinstatement of public assets.	Ongoing	EGSC					Inspections completed and audit report provided.
To assess Council facilities affected by the bushfire response.	Inspect all Council assets utilised for staging areas, relief centre and community response operations to assess impact, rectification, and enhancement opportunities.	Ongoing	EGSC					Inspections completed and audit report provided.
	Undertake mapping of Council managed land areas to inform strategic and operational response.	Ongoing	EGSC					Inspections completed and audit report provided.
	Prepare program of works and estimate costs for reinstatement of public assets.	Ongoing	EGSC					Inspections completed and audit report provided.

Recovery Goal	Recovery Activity	Timelines	Lead Agency	Support Agencies	Funding Status	Link to CRC	Link to Lead Agency Policy/ Plan	Status Report
To set priorities for reestablishment of public assets affected during the fires.	Identify key public assets of significance such as the Mallacoota Boardwalk and Foreshore areas and prioritise.	Ongoing	EGSC					Key public assets of significance have been identified through the EGSC Bushfire Recovery Projects Plan and prioritised.
	Assess and prioritise the rebuild of key public assets such as reserves and rail-trail paths.		EGSC	DELWP				Sites reinstated - State funding for repairs.
	Prepare program of works and estimate costs for reinstatement of open space assets.	Ongoing	EGSC	PV DELWP				Detailed program of works and budget prepared.
	Undertake design process for the reinstatement of burnt / damaged boardwalks /paths within open space areas with a focus on resilience and risk reduction.	Ongoing	EGSC	DELWP				Design process completed per project.
	Re-establish and open public land recreational sites and facilities on State Forest and National Park land.	Ongoing program schedule	DELWP	PV				Facilities and site reopened according to a publicised schedule.
	Prepare program of works and estimate costs for reinstatement of open space assets.	Ongoing	EGSC	PV DELWP				Detailed program of works and budget prepared.
	Undertake design process for the reinstatement of burnt / damaged boardwalks /paths within open space areas with a focus on resilience and risk reduction.	Ongoing	EGSC	DELWP				Design process completed per project.
Assessment and implementation of erosion control measures	Develop schedule of erosion management priorities based on the potential to contribute to key asset failure.	Ongoing	EGSC	RRV DELWP				Detailed program of works and budget prepared.
	Mitigation against open drain scouring and erosion that form part of the urban stormwater system in Mallacoota. There are several locations that would benefit from drain and outfall treatments to reduce erosion risk and mitigate siltation of the waterway.	Ongoing	DELWP	PV EGSC RRV				Priorities documented and works programmed.
	Carry out regular inspections of installed erosion control devices to ensure they function correctly.	Ongoing	DELWP	PV EGSC RRV				Erosion control measures regularly inspected.
	Undertake a program of additional table drain and culvert inspections and clearing in fire affected areas to remove silt and debris.	Ongoing	DELWP	Parks Victoria EGSC RRV				Regular inspection program undertaken.

Recovery Goal	Recovery Activity	Timelines	Lead Agency	Support Agencies	Funding Status	Link to CRC	Link to Lead Agency Policy/ Plan	Status Report
	Assess and remove debris blockages in waterways where they will impact on assets or waterway function.	Ongoing	DELWP PV EGSC RRV	PV EGSC RRV				Agency partnerships developed and coordinated erosion management response undertaken.

Transport and Roads

Recovery Goal	Recovery Activity	Timelines	Lead Agency	Support Agencies	Funding Status	Link to CRC	Link to Lead Agency Policy/ Plan	Status Report
To provide access to fire affected areas for Emergency Services and residents.	Remove and clean up all hazardous trees and tree debris from roads and roadsides in key peri-urban areas. Ensure tree debris and vegetation management in remote area is considered for environmental values.		DELWP RRV EGSC EGSC					All hazardous trees and tree debris removed; roads open to traffic.
	Remove debris from roads to create trafficable surfaces.		EGSC RRV DELWP					All roads cleared and open to traffic.
	Temporarily limit traffic speed along some fire affected roads.		VICPOL EGSC					Temporary speed zones in place.
	Carry out emergency bridge works.		EGSC					Temporary make safe works carried out.
	Close dangerous roads until emergency response tree and road works carried out.		VICPOL					Dangerous road areas closed.
To assess public assets in fire affected areas.	To undertake a comprehensive assessment of road and bridge damage across the road network.		EGSC RRV					All fire affected roads inspected, and immediate tree hazards removed, and maintenance regimes implemented.
	To undertake a comprehensive assessment of road and bridge damage on State forest and national parks roads.		DELWP PV					Successful completion of aerial assessment and follow up engineering site assessments, provision of data to insurers to facilitate replacement program.
	Undertake Level 1 inspections of bridges in all fire affected areas.		EGSC DELWP RRV					Level 1 inspections carried out.
	Undertake Level 2 and 3 inspections of bridges in fire affected areas if required.		RRV EGSC					Level 2 and 3 inspections carried out where required.
	Undertake ongoing roadside/public reserve tree inspections within fire affected areas and document tree removals.		EGSC DELWP Parks Victoria					Inspection program developed and removals documented.

Recovery Goal	Recovery Activity	Timelines	Lead Agency	Support Agencies	Funding Status	Link to CRC	Link to Lead Agency Policy/ Plan	Status Report
	Assess hazardous trees in fire affected roadsides (and other Council managed areas) and make recommendations about immediate and long-term removal and clearance of trees and vegetation, including on-going maintenance regimes.		EGSC BRV DELWP RRV					All fire affected roads inspected, and immediate tree hazards removed, and maintenance regimes implemented.
To reinstate infrastructure that was damaged/lost.	Carry out road repairs within fire affected areas.		EGSC RRV DELWP					Assessment of the network completed, works scheduled. Road repairs undertaken and roads reinstated.
	Undertake a major bridge replacement program on public land (50+ structures)		DELWP PV					No of structures replaced No of structures repaired.
	Undertake drainage works to clear and maintain drains in fire affected areas, particularly in areas where erosion has caused additional silting and debris collection.		EGSC RRV DELWP Parks Victoria					Assessment of the network completed, works scheduled. Drainage works undertaken.
	Repair and carry out surface works to car parks and roads that were affected because of staging and relief centre operations.		DELWP CFA ADF					Assessment of the network completed, works scheduled. Works carried out and roads reinstated.
	Undertake major and minor culvert repairs.		EGSC RRV					Assessment of the network completed, works scheduled. Works carried out.
	Replace all damaged/lost signage and road furniture.		EGSC RRV					Assessment of the network completed, works scheduled. All signage and road furniture replaced.
	Assess roadside vegetation for new and emerging impacts from weed infestations in fire affected areas and make recommendations about both immediate and long-term monitoring and management.		RRV EGSC DELWP					Assessment of the network completed, works scheduled. All fire affected roads and roadside reserves inspected.

	Audit road signage and furniture in fire affected areas.		RRV EGSC DELWP					All fire affected roads inspected, and audit report provided.
	Assess bridge and major culvert assets in fire affected areas and make recommendations about both immediate and long-term repairs and reinstatement requirements.		EGSC RRV DELWP					Assessment of the network completed, works scheduled. All fire affected bridged and major inspected, and audit report provided.
	Prepare program of works and estimate costs for reinstatement of road assets.		EGSC DELWP					Detailed program of works and budget prepared.
To protect Council road assets from damage by Grocon from bushfire clean-up	Complete dilapidation assessment of Council road network in bushfire damaged areas to confirm asset condition pre-clean-up by Grocon.		EGSC BRV					Dilapidation survey carried out
	Enter into agreement with Grocon for use of road network.		BRV EGSC Grocon					Agreement with Grocon.
	Complete post clean-up condition report of road network to identify damage caused by Grocon during clean-up, and request defects be addressed		BRV EGSC Grocon					Defects identified and rectified by Grocon as part of handover

Telecommunications

Recovery Goal	Recovery Activity	Timelines	Lead Agency	Support Agencies	Funding Status	Link to CRC	Link to Lead Agency Policy/ Plan	Status Report
To assess public assets in fire affected areas.	Assess impact to key Telecommunications services across East Gippsland.	Completed	Service Provider					All impacted telecommunications services assessed.
To assess public assets in fire affected areas.	Assess impact to key NBN assets across East Gippsland.	Completed	Service Provider					All impacted NBN services have been assessed.
To set priorities for reestablishment of assets affected during the fires.	Maintenance and/or retrieval of any Temporary Network Infrastructure deployed.	Completed	Service Provider					TNI maintenance schedule developed Plan for TNI retrieval developed.
	Prepare and undertake a program of works for repair to damaged assets	Completed	Service Provider					Network restoration plan developed.
	Prepare and undertake a program of works for rebuild of destroyed assets.	N/A	Service Provider					Site rebuild plan/s developed Services restored to rebuilt site Services restored and reinstated to BAU supply for customers.
Provision of service to fire impacted property owners.	Undertake connection works as property owners rebuild to ensure nbn service.	Ongoing	Service Provider					All services reconnected to properties requesting a service.

Energy Services

Recovery Goal	Recovery Activity	Timelines	Lead Agency	Support Agencies	Funding Status	Link to CRC	Link to Lead Agency Policy/ Plan	Status Report
To assess public assets in fire affected areas.	Assess impact to key energy services across East Gippsland Assess impact to key energy services across East Gippsland.	Complete	AusNet	DELWP AusNet DELWP				Electricity and gas services assets reinstated and returned to reliable supply.
	Undertake inspections of vegetation immediately adjacent to key electrical assets.	Complete	AusNet					Inspections completed.
	Undertake a line inspection of key assets within the network and identify opportunities to improve the resilience of those assets.	Complete	AusNet					Line inspection completed.
	Prepare and undertake a program of works for vegetation management to ensure appropriate vegetation clearance from electrical assets (including removal of any hazard trees)	Complete	AusNet					Develop a program of works to undertake vegetation management.
To set priorities for reestablishment of public assets affected during the fires.	Prepare and undertake a program of works for line construction to restore the electrical network.	Complete	AusNet					
	Undertake reconnection works as property owners rebuild to ensure electrical supply is reinstated.	Complete	AusNet					

Drinking Water / Sewerage

Recovery Goal	Recovery Activity	Timelines	Lead Agency	Support Agencies	Funding Status	Link to CRC	Link to Lead Agency Policy/ Plan	Status Report
Provision of drinking water that meets the Australian Drinking Water Guidelines to customers (domestic and commercial) on mains supply water.	Undertake assessment of any impacted water infrastructure to determine likelihood of impact to water quality.	Complete	EGW					BAU Assessment completed.
	Conduct repairs to drinking water infrastructure at Mallacoota water treatment plant.	Complete	EGW					BAU Repairs completed.
	Major water quality infrastructure upgrade at Orbost raw water storage and water treatment plant to deal with source water turbidity issues and provide for future extreme events.	Complete	EGW					BAU Upgrade completed.
Provision of wastewater collection and treatment services to customers (domestic and commercial) on sewerage reticulation system.	Conduct repairs to wastewater re-use infrastructure at Mallacoota wastewater treatment plant.	Complete	EGW					BAU Repairs completed.
	Conduct repairs to No 1 sewer pump station in Mallacoota.	Complete	EGW					BAU Repairs completed.
	Minor repairs and upgrades to other damaged assets.	Complete	EGW					BAU Repairs and upgrades completed.
To facilitate the provision of drinking water and wastewater management in fire affected areas.	Provision of alternative water supply.	Complete	SE Water BRV					Alternative water supply provided and support to landholders for tank replacement scheme.
	Inspect fire-damaged septic tanks.	Ongoing	EGSC BRV					Provision of drinking water and wastewater services to community.
	Develop a 'one-stop-shop' as the initial contact point for bushfire affected residents who need emergency relief water, as well as coordinating the delivery of water across affected areas, including the provision of water tanks.	Complete	SE Water BRV Melbourne Water					Provision of drinking water, rainwater tanks and support to landowners to flush existing tanks