

Cann Valley Recovery Update

JULY 2022

Update from Annie

Well, winter has certainly come upon us with gusto, especially with those torrid winds bringing down trees and ensuring that the SES crew was on top of their game!

I would like to introduce Ernie Vare who is working alongside me in the role of Community Recovery Support Officer. Many of you will already know Ernie, as he grew up in the district and is involved with the Cann River CFA brigade. Ernie and I work closely together to ensure a community lens is applied to all components of our work and we strive to deliver the best outcomes for the Cann Valley District.



Annie Kentwell and Ernie Vare

I would like to congratulate the following successful East Gippsland Community Foundation grant recipients:

Club Terrace Community Reserve Committee (\$34,834 for Club Terrace Recreation Reserve Temporary Meeting Place);

Tamboon Inlet Community Association (\$45,000 for Emergency Shed and Equipment for Tamboon South);

Cann Valley District Representative Group (\$69,031 Community-led Capacity Building and restoration of the Cann River Old Noorinbee Winery building.

Thanks to the foundation's Executive Officer, Michelle Dowsett, for awarding those 'big cheques' to the successful local community groups.

In May, several Councillors and Council's executive leadership team visited Club Terrace to 'meet and greet' the Club Terrace Community Reserve Committee. Their itinerary began with an update on the demolition of the Old School, a viewing of the temporary community meeting place and progress of the new permanent community facility.

They then travelled to Cann River to meet with the Cann Valley District Representative Group to discuss topics such as the Cann River Waste Transfer Station, proposed additional parking spaces, fire preparedness grants and the new Mick Baum skate park.

One of the follow-up actions was to share information about suggested transfer station site assessments. This information has been provided directly to community members through the post. Council then hosted a luncheon to thank volunteers from the district for all they have done. A video was also shown of several familiar local faces expressing why they love to volunteer. The video is available on Council's YouTube channel under the 2022 Volunteer Week playlist:

<https://bit.ly/3nEPIXq>

The Tourism Opportunity Plan (TOP) is being finalised and will soon be released. The document highlights tourism opportunities for existing and potential new business operators. The TOP provides further nature-based tourism opportunities in Cann Valley to support the large number of visitors who travel through the area every year.

Club Terrace Facility

We were pleased to receive funding of \$751,000 from Bushfire Recovery Victoria to construct a purpose-built facility for Club Terrace. The facility will be a new community hall after the existing hall was directly impacted

during the 2019-20 bushfires. Due to the extent of the damage, the hall will be demolished.

Community halls in districts such as Club Terrace are a well-loved hub for community events, celebrations, and gatherings for support during times of need. This new facility will be a welcome addition to this community.

For more information or to view the plans, please visit

<https://bit.ly/3biYvEV>



Councillors met with community members at Club Terrace on 16 May to discuss the construction of a new community facility following a successful Council funding application.

Cann River Waste Transfer Station

We would like to thank community members for their interest and feedback through the Your Say page regarding the waste transfer station. The planning permit application for the transfer station has received a number of objections and is being assessed by Council's planning team. The next step is an independent mediation process in late July, and then consideration at an open Council meeting. We are committed to ensuring the community has the waste disposal infrastructure necessary to function efficiently and encourage community members to follow the progress of the service transition on our website: <https://yoursay.eastgippsland.vic.gov.au/cann-river-transfer>

Cann Valley Recovery Update



Budget adopted

Council adopted the 2022-23 Budget at its Council meeting on Tuesday, June 28.

In considering community feedback, the 2022-23 Budget features some changes to what was presented to the community for feedback in the draft Budget.

More than 400 community members and groups took the opportunity to provide a range of feedback on the draft. Councillors read and considered all this feedback, along with verbal feedback received from residents during their day-to-day interactions.

Amendments made to the final 2022-23 Budget included an increase in the value of the Capital Works Program from \$91.4 million to \$104 million.

Mayor Cr Mark Reeves said the capital works budget was about three times larger than usual – it usually sits around \$32-\$42 million.

"It is important to note Council's contribution to the capital works budget has not increased. All of the increase has come from our work to secure state or federal grants. These are mostly competitive grants that we have been able to attract to East Gippsland for projects that we know are a priority for the community. The grant income for our capital projects is \$53 million.

Rates and charges

The rate waiver for eligible properties where the main dwelling was destroyed or deemed uninhabitable as a result of the 2019-20 bushfires will continue for the 2022-23 and 2023-24 years. Councillors heard the feedback from

the community and amended the farm rate differential discount, increasing the discount to 20%. The farm rate differential will be 80% of the general rate.

Waste levy

The \$37 levy is a direct response to a significant increase in the Victorian Government's landfill levy that is imposed on our landfills. This is the second year that the Victorian Government has imposed such a significant increase which will increase our landfill costs by almost \$1 million. Domestic waste collection charges will remain the same as in the 2021-22 year as will our waste facility fees and charges. The cost to dispose of mattresses has decreased, to encourage people to dispose of these items responsibly.

The 2022-23 Budget can be viewed on our website and at our Customer Service Centres.

Rebuilding

We are continuing to support people whose homes were destroyed or damaged by the fires of 2019-20. Our Rebuild Support Service, set up in partnership with Bushfire Recovery Victoria, provide specialised advice to help streamline both planning permit application requirements and advice. Our recent Rebuild Support Service figures indicate that across the Cann Valley district (Buldah, Cann River, Chandlers Creek, Club Terrace, Combienbar, Noorinbee, Noorinbee North, Tamboon, Tamboon South, Tonghi Creek, Wingan) there have been 12 referrals to Rebuild Support Services.

If you need assistance navigating planning approvals, contact the service on brss@egipps.vic.gov.au

Cann Valley community members who have longer term housing requirement needs are encouraged to register on the Victorian Social Housing registry if eligible. Contact us if you need additional information or go to housing.vic.gov.au

More than two years since the fires, rebuilding remains slow. There are a range of reasons and challenges being faced by those rebuilding. Some reasons include insurance that does not cover the increased building costs or the current bushfire building standards, limited numbers of builders/tradespeople, increase in building costs over the last year, and supply chain issues reducing building material availability.

This situation presents complex issues which require more effort and attention from all levels of government and other partners. We are advocating strongly on relation to these issues with the state and federal governments. We are also convening with partners to work on finding solutions to these barriers. Recognising the ongoing impact on property owners affected by the Black Summer 2019-20 bushfires that have yet to rebuild, Council will extend the rate waiver period for an extra year. The waiver is available for the 2022-23 and 2023-24 financial years to people who lost the main dwelling on the property and are yet to rebuild.

Have you signed up to our *My Council, My Community* newsletter?

It's our monthly shire-wide newsletter emailed to your inbox. Find out about our programs, projects, consultation opportunities, grants, services and more. To read the latest edition or subscribe, visit <https://bit.ly/3c4wJ5S>



Cann Valley Recovery Update

JULY 2022



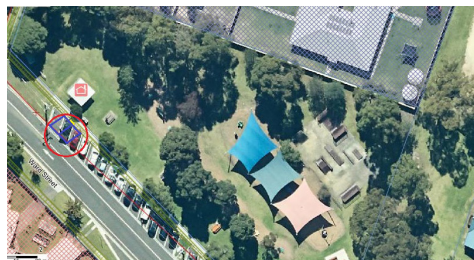
Electric vehicle charging station coming to Cann River

We are starting to roll out a network of electric vehicle (EV) charging stations for the public. We secured federal and state government funding to install seven fast chargers by June 2023.

The aim is to support the uptake of electric vehicles and encourage more tourism across our region. All of our electric vehicle charging stations will source 100% renewable electricity as part of the Victorian Energy Collaboration (more on that program at <https://veco.org.au>)



Stage 1 is funded by the Australian Government's Local Roads and Community Infrastructure Program and will see a 50kw fast charger installed in Tongio Road on-street parking in the coming weeks. Charging stations will also be installed in Bairnsdale, Orbost and Cann River.



For more information contact Rebecca Lamble, Sustainability Officer, on 03 5153 9500 or visit the energy page on our website <https://bit.ly/3OwTtKd>

Environment Connect Winter 2022

The winter edition of Environment Connect is now available.

Environment Connect is our quarterly update about environmental projects, activities, and opportunities. Past copies are available from the website:

<https://bit.ly/3R8CC2i>



A word from Kaylene Wickham, Agribusiness Development Officer

The Agribusiness Development Officer role has provided me with the opportunity to work alongside our farmers who were drought affected and then fire affected. As a result, I am better aware of the issues that are affecting our rural communities, enabling me to effectively advocate for funding or services where needed. The response to Council's 2021 Farmer Survey was notable with 435 surveys returned. This provided us with current, real time, raw data that we have used to develop seven action themes.

The new 'Grown Caught Made' farm gate trail program links farmers to sales, new markets, locals, and visitors touring our lovely region.

To see a farm gate business that you can visit, check out the Visit Gippsland website, <https://bit.ly/3bxVEP5>

It is evident many people are still struggling to 'reground' after all the events of the past couple of years.

Many people have faced repeated setbacks and are only now just able to lift their heads and take a breath.



Kaylene with Neil Stringer from Forge Creek Lamb as he joins the new 'Love where it's Grown Caught Made' program.

To support farmers, Community Outreach Events were held in some rural communities. Farmers who attended these events reported that they appreciated knowing there were services available to assist.

It is important to me to make sure farming businesses can connect to programs, initiatives, funding and opportunities, so they can pursue plans for their business.

To share news of programs, funding etc, I collate an agri-newsletter. If you would like to receive this, email KayleneWi@egipps.vic.gov.au or call 03 5153 9500.

Visitor Services Survey

Have your say and be part of reshaping the future of visitor services in East Gippsland.

The tourism industry has faced significant challenges over the last couple of years. Now is a good time to review how future visitor services could look in our region.

Residents are invited to fill in a survey to help evolve our tourism service offer.

Continued over page...

Cann Valley Recovery Update

JULY 2022



Complete the survey to win

As a thank you for completing the survey, you can go into the draw to win an experience for two at the new Metung Hot Springs.

Please complete the survey by 11.59 pm on 19 July at: www.surveymonkey.com/r/EGVSCCommunityStudy



A picture is worth a thousand words...



Cann River has a fantastic new mural celebrating the dedication and community support of CFA and SES volunteers, staff from emergency services agencies, and timber workers. Mayor Cr Mark Reeves attended the official unveiling on Tuesday 5 July – it was great to see a strong attendance of over 50 people. Also at the unveiling were Member for Gippsland East Tim Bull, CFA Commander Don Tompkins and SES Assistant Chief Officer, Regional Manager Anthony McLean. The mural was painted by Simon White and is in a high-profile location on the wall of the SES depot on Monaro Highway.

Why not apply for a community grant?

Our next round of Community Grants are open now.

There are two categories: Community Projects, and Arts and Heritage. Grants are available to community groups, clubs, facility managers, event managers and, for some arts and heritage grants, individuals.

We are holding an online session to help you refine your project or activity, and give you tips on writing your application. The one-hour session will be on:

- Wednesday 13 July from 6.00 pm.

It is important to read the guidelines before starting your application. Please call our Community Development Officer on 03 5153 9500 if you have any questions. For more information or to register visit www.eastgippsland.vic.gov.au/community/grants

Annie Kentwell
Place Manager -
Cann Valley

(03) 5153 9432
0499 469 804
AnnieK@egipps.vic.gov.au

Contact Council
5153 9500
feedback@egipps.vic.gov.au