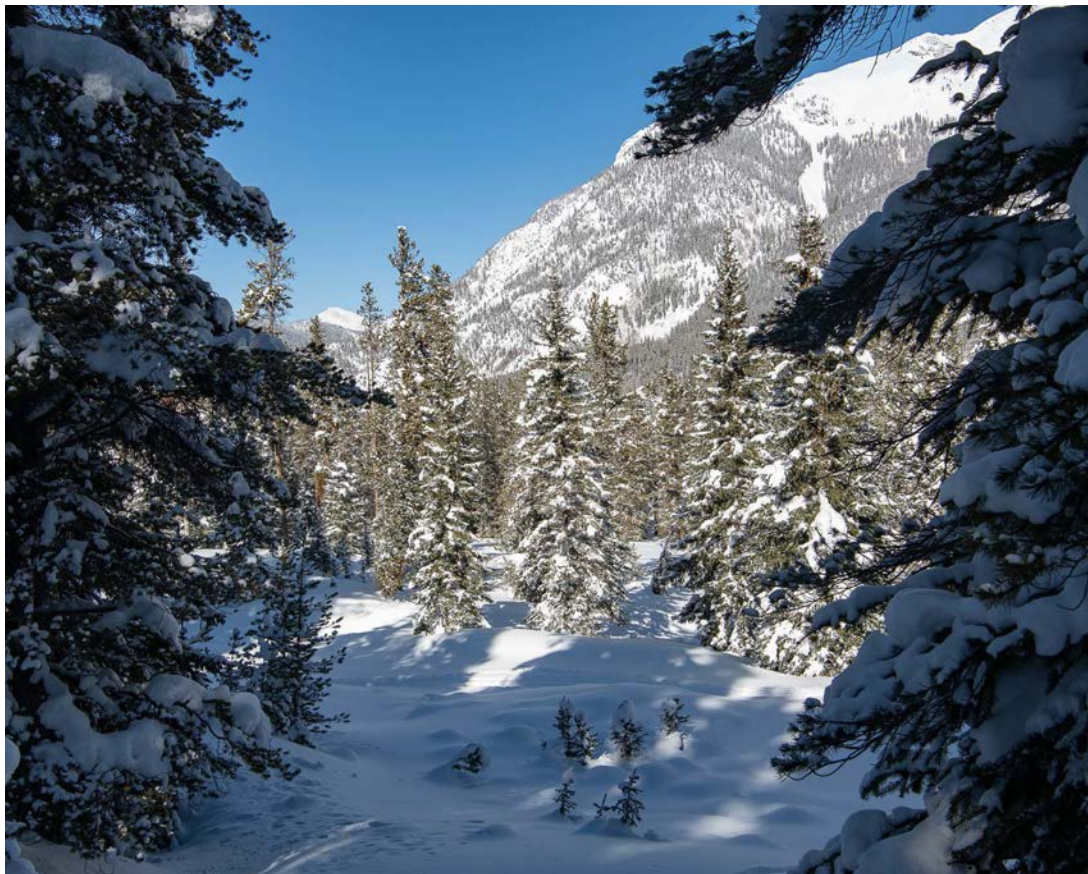
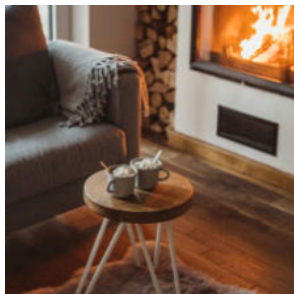




## BORN MOUNTAIN CLUB | HOMESITE No.1



- Ⓐ *View corridors to the north, east and west.*
- Ⓑ *Trail to Copper Village just a step to the west.*
- Ⓒ *Ski in ski out access to Bee Traverse along trail to Copper Village.*
- Ⓓ *Backs up to forested wetlands.*



***Homesite No. 1** is a secluded forested lot located on the right at the end of the A-Lift Neighborhood roadway, just beyond the wetland crossing bridge. Access to the trail to Copper Mountain Center Village is a step away to the west. Views from this site include forested areas to the west and north including forested wetlands to the east.*

**Lot Size** 0.2381 ACRES (10,370 SQ FT) > **Potential Home Size** 6,000 GSF





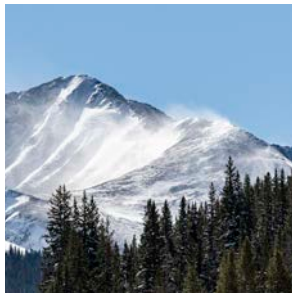


## BORN MOUNTAIN CLUB | HOMESITE No.2

★ SOLD ★



- *Views of the Tenmile Range to the south.*
- *Trail to Copper Village just a step to the northwest.*
- *Ski in/ski out access to Bee Traverse along trail to Copper Village.*
- *Backs up to forested wetlands.*



*Homesite No. 2 is bounded by the Bee Traverse ski run on the west, a forested wetland on the southeast and other homesites to the east and the north. Views from this site include the Tenmile Range to the south.*

**Lot Size** 0.2381 ACRES (10,370 SQ FT) ◇ **Potential Home Size** 9,000 GSF







## BORN MOUNTAIN CLUB | HOMESITE No.3



- A** *Views of the Tenmile Range to the south.*
- B** *Ski in ski out access to along the Formidable ski run.*
- C** *Backs up to forested wetlands.*
- D** *Access to recreational hiking and snow shoe trails.*



*Homesite No. 3 is bounded by the Formidable ski run on the south, a forested wetland on the west and other homesites to the east and the north. Views from this site include the Tenmile Range to the south.*

**Lot Size** 0.2381 ACRES (10,370 SQ FT) ◇ **Potential Home Size** 5,000 GSF

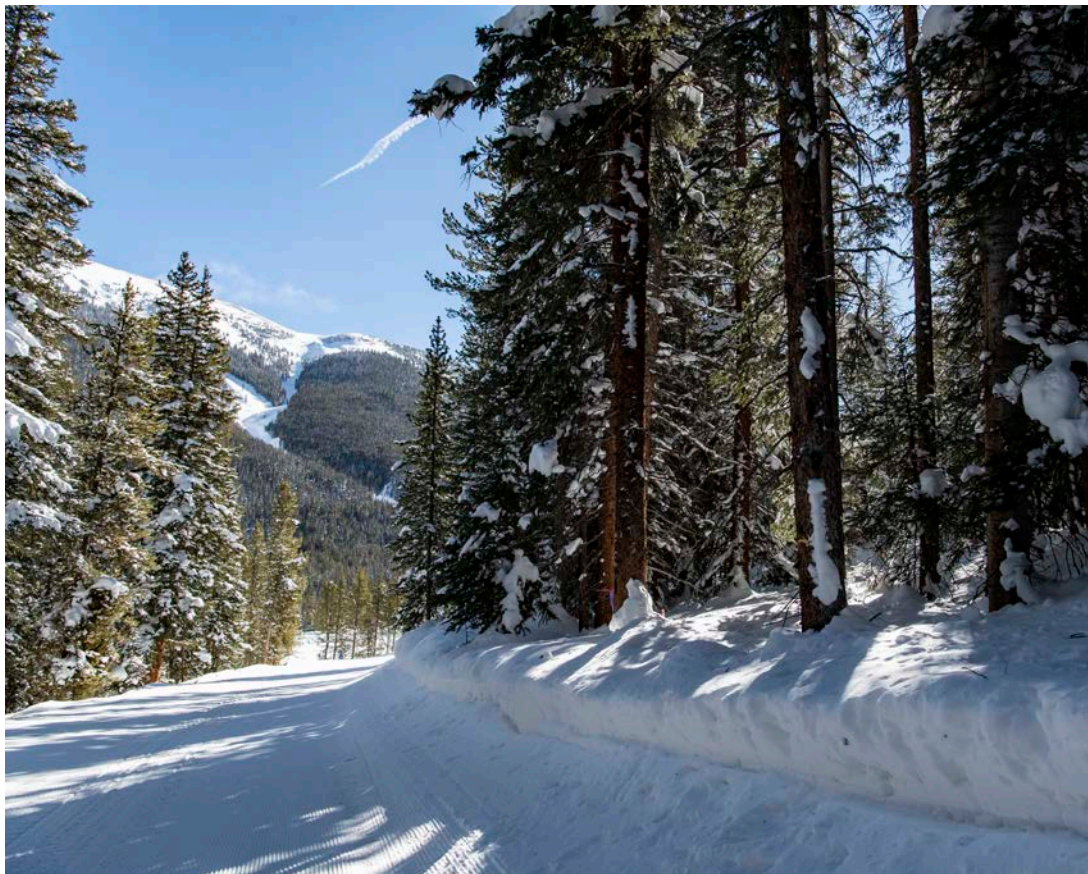




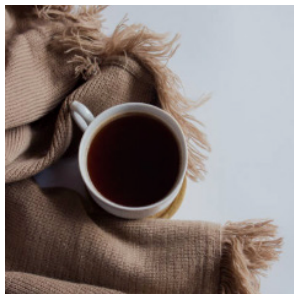
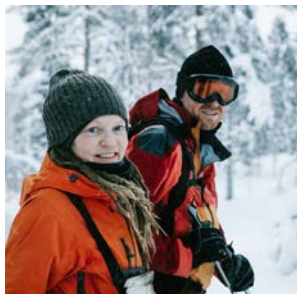


## BORN MOUNTAIN CLUB | HOMESITE No. 4

SOLD



- A** Views of the Tenmile Range to the south.
- B** Ski in ski out access to along the Formidable ski run.
- C** Access to recreational hiking and snow shoe trails.
- D** Ski in ski out access to the Alpine Chairlift.



*Homesite No. 4 is the first single family lot on the right along the A-Lift Neighborhood roadway. This lot is bounded by the Formidable ski run to the south, the hotel parcel on the east and other homesites to the west and the north. Views from this site include the Tenmile mountain range to the south.*

**Lot Size** 0.2381 ACRES (10,370 SQ FT) > **Potential Home Size** 6,000 GSF



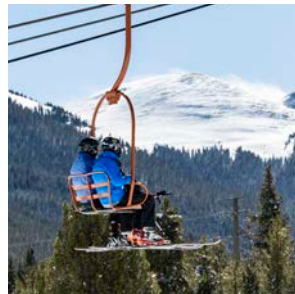




## BORN MOUNTAIN CLUB | HOMESITE No.5



- A** Views of forested wetlands to the west and Tenmile Range to the south.
- B** Ski in ski out access along the pedestrian trail to the south.
- C** Backs up to forested wetlands.
- D** Access to recreational hiking and snow shoe trails.



*Homesite No. 5 is the first single family home lot located on the right along the A-Lift Neighborhood access road. This lot is bounded by a townhome parcel to the north, a forested wetland to the west, single family home lots to the south and the hotel parcel to the east. The best views from this site includes the forested wetland to the west and the Tenmile mountain range to the south.*

**Lot Size** 0.2381 ACRES (10,370 SQ FT) **Potential Home Size** 9,000 GSF

