

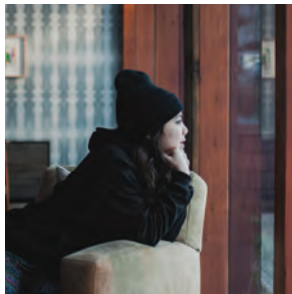


# BORN MOUNTAIN CLUB | HOMESITE No.1

RESERVED



- A Views to the north, east and west.
- B Trail to Center Village just a step to the west.
- C Ski-in, ski-out access to Bee Traverse along trail to Center Village.
- D Backs up to forested wetlands.



*Homesite No. 1 is a secluded forested lot located on the right at the end of the A-Lift Neighborhood roadway, just beyond the wetland crossing bridge. Access to the trail to Copper Mountain East and Center Village is a step away to the west. Views from this site include forested areas to the west and north including forested wetlands to the east.*

**Lot Size** 0.24 ACRES (10,377 SQ FT) **Potential Home Size** 6,000 GSF



