

THE CONFIDENT KAT



THE **COSMO TIGERTAIL** IS AN
ALL SEASON SUV/CUV HIGH
PERFORMANCE TOURING
TIRE THAT PROVIDES:

- ➔ EXCELLENT HIGH SPEED STABILITY
- ➔ SMOOTH COMFORTABLE RIDE
- ➔ PRECISE HANDLING AND STEERING RESPONSE
- ➔ UNRIVALED CONTROL AND WET TRACTION



COSMO TIRES *TigerTail*



THE
CONFIDENT KAT

COSMO TIRES®

TigerTail

TREAD DESIGN

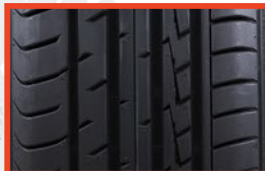
FEATURES



THE

CONFIDENT KAT

HIT THE ROAD WITH COSMO CONFIDENCE. OUR **TIGERTAIL** TIRE BRINGS TOP VALUE AND PERFORMANCE TO EVERYDAY DRIVING. AVAILABLE IN A WIDE RANGE OF SIZES AND TESTED ON THE ENDURANCE RACING CIRCUIT, THE TIGERTAIL IS A DEPENDABLE, DURABLE AND HIGH-QUALITY TIRE FOR THE DAILY COMMUTE, THE ROAD TRIP, AND ANYTHING ELSE LIFE MAY THROW AT YOU!



ADVANCED TREAD DESIGN

Asymmetric pattern provides superior control in both wet and dry conditions



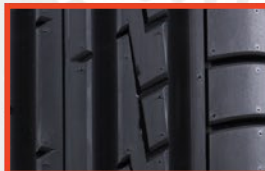
SEMI-CONNECTING BLOCKS

Shoulder blocks are designed to ensure rigidity and improve dry performance ensuring sharp cornering while supporting wet road handling



EQUAL BALANCE DESIGN

Inside shoulder design with balance tread block concepts ensure a silent and comfortable ride



Z-BLOCK DESIGN

Improves wet/dry traction performance thru multi-siping



SOLID CONTINUOUS CENTER RIB

Provides stiffness ensuring high speed stability and more contact area



BEAD REINFORCEMENT SYSTEM

Improves handling performance and steering response



4 CENTER CHANNELS

4 straight grooves provide anti-hydroplaning performance in wet road conditions

CONSTRUCTED

USING

DSS

**DIRECTED
SUPER
SILICA**

PROPRIETARY TECHNOLOGY EMPLOYED IN OUR COMPOUND TO ASSURE LOW ROLLING RESISTANCE, BETTER WET TRACTION AND LONGER TREAD LIFE

UTT

**ULTIMATE
TIRE
TECHNOLOGY**

BRS - BEAD REINFORCEMENT SYSTEM DSS - PROPRIETARY COMPOUNDING
NST - NEW STRUCTURE TECHNOLOGY OPD - OPTIMUM PERFORMANCE DESIGN

CAP

TIGERTAIL IS BUILT TO EXCEED EXPECTATIONS



M+S ALL SEASON



ROAD HAZARD WARRANTY

Free replacement through first 25%

