

X Vent Box Installation: Precast

Our "F" series exhaust cavity termination box was intentionally designed for Precast. Simple and easy to install. Over 20 different ducting options available.



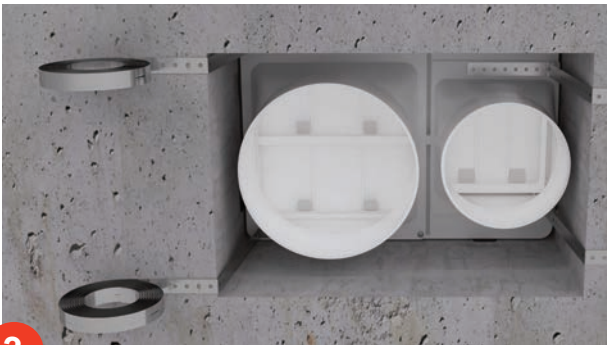
1

Provide properly sized formed block-out.



2

Provide a continuous liberal bead of sealant around rear face flange, as illustrated. Recommended Sealant: Sikaflex®-201 US is a one-component, flexible, polyurethane-based, non-sag elastomeric sealant



3

Pull rear straps tight and bend over and fasten with Tapcon or equal.



4

Secure straps at each corner.

5

X Vent Box will be flush with exterior facade. Providing an attractive, functional, problem free sidewall exhaust termination system.

