



A E Y E Health

Preventing Blindness with AI-Powered Telemedicine

Zack Dvey-Aharon, Ph.D.
CEO, January 2021

Non-Confidential

Artificial Intelligence to Democratize Diagnostic Screening



The Problem



US High-Risk Population

Diabetic Retinopathy

35M people with diabetes
84M prediabetics



Glaucoma & AMD

55M people at age 65+

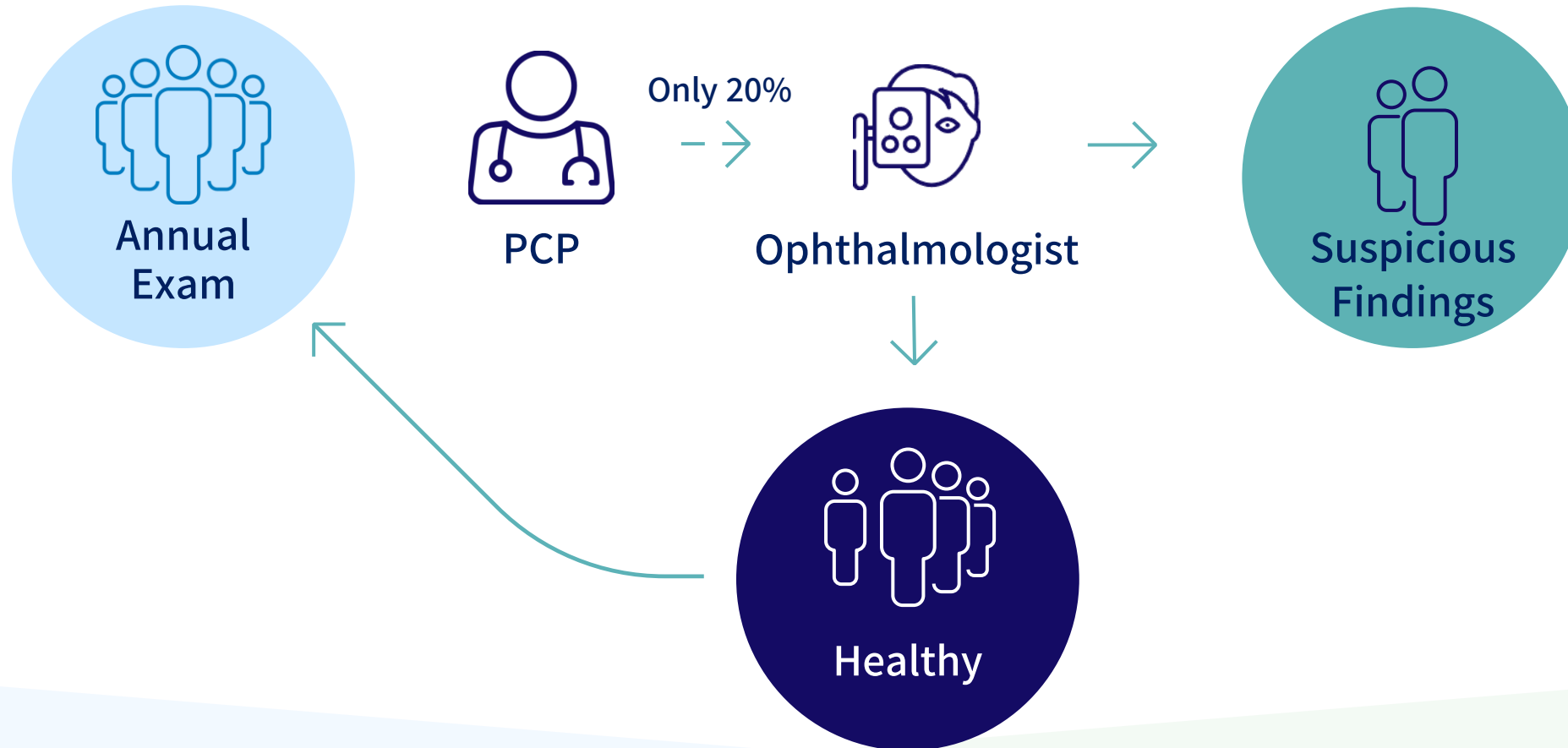
More than 75% are not screened
due to high cost and lack of access

As recommended by:



Current Standard of Care is Inefficient

80% of patients requiring referral remain undiagnosed



AEYE Health's Solution

Screening & diagnosing 100% of patients using new AI CPT code

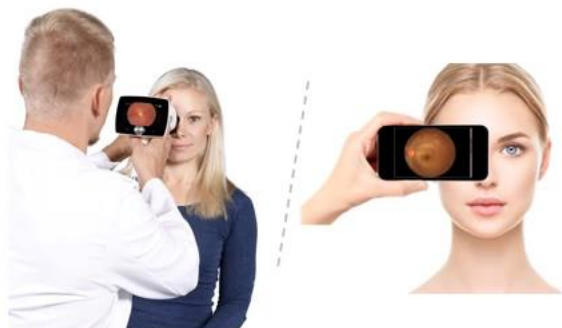


Accurate, Affordable & Usable

Performed in 3 easy steps



Step 1



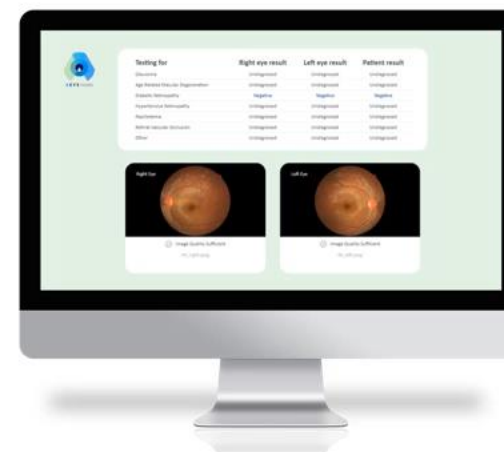
Take a retinal image using a portable camera

Step 2



AI analysis engine

Step 3



Report within a minute

Leadership

Multidisciplinary team of leading AI computer scientists, ophthalmologists & healthcare executives

Executive



Zack Dvey-Aharon, Ph.D.

CEO, CO-Founder

- Serial entrepreneur, advisor, lecturer
- PhD. in Machine Learning, 8200



Danny Margalit

COO, Co-Founder

- Co-Founder Aladdin (NASDAQ IPO)
- Product & IP Expert



Izik Itzhakov

VP Business Development

- Over 20 years in Healthcare IT
- CLEW, iMDsoft, 8200



Amit Wohl

VP Clinical Trials

- Seasoned technology executive
- MSc, MBA MIT, BSc Technion

Board



Yiannis Monovoukas, Ph.D.

- Helios Global, Falcon Ventures
- CEO of TEI Biosciences, Acquired for \$312M



Sean Ianchulev, MD, MPH

- Serial Investor, CEO at Eyenovia
- Professor of Ophthalmology at UCSF & Mount Sinai



Stephen Remondi

- Serial Investor, CEO at Xspera
- Board of advisors at Tufts, Partner at R-Cubed



Mike Netz

- Serial Angel Investor
- Former CEO Teva Israel

Medical

Sean Ianchulev, MD, MPH

Chairman, Medical Advisory Board

Austin Bach, DO, MPH

Medical Director, Ophthalmologist, CEO at Abita

Edward Rubinchik, MD

Ophthalmologist, Founder at Smart Eye Care

Sam Goldberger, MD, MBA

Ophthalmologist, CEO Rangol Partners

Elaine Sachter, MD

Internal Medicine, Virginia Mason

Eli Kraus, MD

Ophthalmologist, retina specialist

Ehud Rechtman, MD

Ophthalmologist, Sheba Medical Center

Tzvi Gottesman, OD

Optometrist, Wesley Eye Care

2021 Go to Market

The first AI CPT code for autonomous diagnostic screening: [92229](#)



Bundles

Q1

Handheld camera + AI
Sold as subscription
USA TAM: **\$3.6B**

Licenses

Q2

Camera manufacturers
Pharma companies
Telemedicine Providers

HES

Q4

Health System Enterprise
Solution to support complex
environment integrations

**\$800,000
BIRD grant**

Strategic Partners Verticals



Camera Manufacturers

AI integrated with retinal cameras

Co-marketing a joint product with Optomed



Pharma Companies

Early detection, AI for clinical & regulatory processes

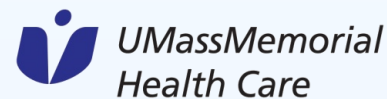
Roche Diabetes Care
Installation at 4 locations



Healthcare Providers

Collaboration with leading AMCs

Mount Sinai, Lahey Clinic, UMass



Aurora AEYE

The First Handheld Diagnostic Screening Bundle

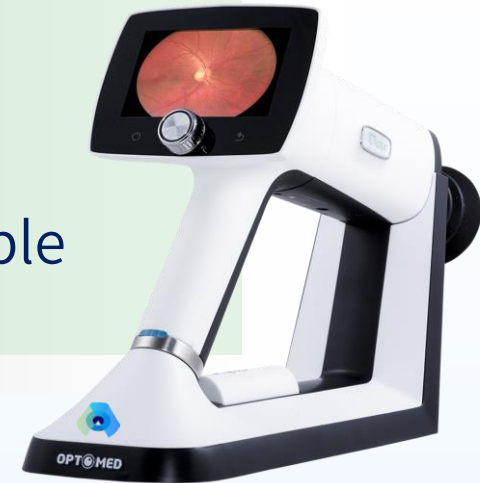


**Bundle
Handheld + AI**

In collaboration with:

OPTOMED

Bundling diagnostic AI
with a portable camera
will make screening
affordable and accessible





Thank You!

www.aeyehealth.com • 1-866-262-7343 • zack@aeyehealth.com