

**My Vision:**


To achieve excellence in local policing and the highest levels of public confidence by working alongside communities and partners to address what matters locally.


[Click on each box to see how the Constabulary is performing](#)




Placing the current performance in context, what does the Constabulary's performance look like?


I monitor force performance by measuring:

 **Victim Based Crime Statistics:**  
Desired outcome: Fewer crimes and therefore fewer victims of crime


 **Public Confidence:**  
Desired outcome: Improved levels of public confidence


 **Victim Satisfaction:**  
Desired outcome: Increased victim satisfaction


and my personal and community priorities:


**Personal Priority 1 –**  
To reduce the impact of domestic abuse, particularly violence against women and girls 

 **Community Priority 1 –**  
To tackle anti-social behaviour

**Personal Priority 2 –**  
To reduce the impact of hate crime 

 **Community Priority 2 –**  
To tackle the harm caused to individuals and communities by alcohol and drugs

**Personal Priority 3 –**  
Improve engagement with local communities across the Constabulary area 

 **Community Priority 3 –**  
To improve road safety by tackling careless and dangerous driving, speeding and other related road safety issues

 **Community Priority 4 –**  
To make our policing service visible and accessible at all times

Overall Outcome

 **High Quality Policing**

**Jump to “Conclusions”**

The emoticons represent my verdict on police performance. See [glossary](#) for more details

## Recent Performance

- Durham Constabulary covers both County Durham and Darlington, an area with a population of around 623,000 people
- Below shows an approximation of how things have changed in the last 5 years:

	<u><b>2009</b></u>	<u><b>2014</b></u>	
<b><u>Staff Numbers</u></b>			
• Police Officers	• 1578	• 1200	• - 378
• PCSOs	• 170	• 155	• - 15
• Police Staff	• 930	• 800	• - 130
<b><u>Crimes</u></b>			
• Overall Crime	• 42,000	• 33,000	• - 22%
• Burglary Dwelling	• 2,500	• 1,350	• - 44.8%
• Theft from a Motor Vehicle	• 3,000	• 2,000	• - 33%
• Violence Against the Person	• 7,000	• 6,400	• - 8%
• Shoplifting	• 3,200	• 3,600	• + 14%
<b><u>Confidence</u></b>	• 53%	• 73%	• +20%
<b><u>Victim Satisfaction</u></b>			
• Actions Taken	• 79%	• 89%	• + 10%
• Follow Up	• 68%	• 84%	• +16%
• Whole Experience	• 82%	• 89%	• + 7%

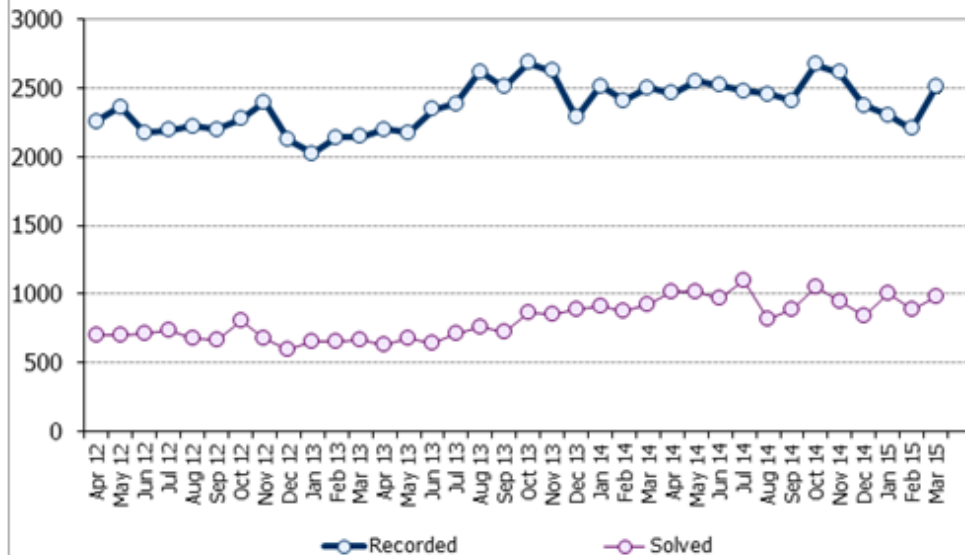
[Next Page](#)

[Return to Main Screen](#)

## Police and Crime Plan Primary Measure: [Victim Based Crime Statistics](#)

	2012/13	2013/14	Difference	% Difference	2014/15	Difference	% Difference	PCC Verdict
Victim based crime (Inc. Medomsley)	26,535	29,275	+ 2740	+ 10.3 %	29,570	+ 295	+ 1 %	☹️
Solved Rate (Inc. / Excl. Medomsley)	30.9 % / 30.9 %	32.2 % / 32.8 %	-	+ 1.3 % / 1.9 %	38.9 % / 39.7 %	-	+ 6.7 % / 6.9 %	😊

**VICTIM BASED (inc. Medomsley) - Durham Constabulary**  
April 2012 to March 2015



We are experiencing increases in crime in areas such as shop lifting. Specific detailed analysis is being undertaken by the Constabulary to better understand who, how and why this crime type is increasing. My initial conclusions are that due to the continued period of austerity, and changes to the benefit system, we are finding that an increasing number of people are 'stealing' to live.

Higher numbers of recorded victim-based crimes also shows people are reporting more to the police when they may previously have not, which is positive. This is particularly the case for domestic abuse and sexual offences. It also includes the [Medomsley Case](#) which, despite being historic, each incident is recorded within the figures for the month that it was reported in. Excluding the Medomsley Case, there was a **0.63%** increase for 2014/15 compared with 2013/14. However, this still includes victims of other historical abuse offences who are now also coming forward following high-profile revelations across the country.

Despite these increases, our solved rates are continuing to increase as well, which is extremely positive. In comparison to our most similar forces, Durham Constabulary had nearly **15% fewer victim-based crimes** recorded in 2013/14 per head of population. 2014/15 data is not yet confirmed.

Given those reasons for an increase in victim-based crime figures detailed above, plus the Government cuts, I feel it is positive that the Constabulary have maintained performance this past year. I will continue to monitor performance as this new year ensues.

A further break down by crime type is available under 'High Quality Policing', later on in this report. [Click here](#) to go to this section

[Next Page](#)

[Return to Main Screen](#)

## Police and Crime Plan Primary Measure: Public Confidence

Public Confidence (CSEW)	12 months to end of June 2014	12 months to end of Sept 2014	% Difference	12 months to end of Dec 2014	% Difference
'taking everything into account I have confidence in the police'	75.9 %	76.1 %	+ 0.2 %	75.7 %	- 0.4 %
% of people who think the police do a good job	62.7 %	62.5 %	- 0.2 %	62.1 %	- 0.4 %

Local Survey	Quarter 1	Quarter 2	% Difference	Quarter 3	% Difference	Quarter 4	% Difference	PCC Verdict
'taking everything into account I have confidence in the police'	76 %	73 %	- 3 %	71 %	- 2 %	72 %	+ 1 %	☹️
% of people who think the police do a good job	72 %	70 %	- 2 %	69 %	- 1 %	68 %	- 1 %	☹️

*\*The local survey and CSEW indicators above are not fully comparable, as the surveys are not exactly the same, however this is the only national data that we have available to us. The quarter 4 CSEW data is not yet available at this time. [CSEW= Crime Survey for England and Wales](#).*

The Constabulary has been focusing on increasing confidence. I am satisfied that the confidence delivery plans, which target activity within the three strands of Community Engagement, Police Effectiveness and Service Behaviour, are now coming to fruition. I am delighted with the success that the Constabulary is seeing with initiatives such as [“Park, Walk and Talk”](#) and [“Mutual Gain”](#). Although I do feel both key indicators need monitoring due to the slight declines, it is important to notice that some local statistics are still higher than nationally and national data is also showing a decline which could be due to some high profile incidents in the media outside of our Constabulary.

It is important that the public have confidence in the police as it increases feelings of safety and also the likelihood they will report a crime. Due to this importance, I have proposed to make increasing public confidence one of my objectives in my refreshed Police and Crime Plan, which came into effect on 1<sup>st</sup> April 2015, the start of the new year.

[Next Page](#)

[Return to Main Screen](#)

## Police and Crime Plan Primary Measure: Victim Satisfaction

Victim Satisfaction	2013/2014					2014/2015					% Difference	PCC Verdict
	Q1	Q2	Q3	Q4	Year End	Q1	Q2	Q3	Q4	Year End		
											Between 13/14 – 14/15	
Whole Experience	91 %	88 %	88 %	87 %	<b>89 %</b>	93 %	90 %	85 %	91 %	<b>90 %</b>	+ 1 %	😊
Ease of Contact	94 %	99 %	97 %	96 %	<b>97 %</b>	99 %	97 %	96 %	98 %	<b>98 %</b>	+ 1 %	😊
Arrival Time	91 %	87 %	87 %	88 %	<b>88 %</b>	91 %	90 %	87 %	89 %	<b>89 %</b>	+ 1 %	😊
Actions Taken	94 %	88 %	89 %	87 %	<b>90 %</b>	93 %	91 %	85 %	89 %	<b>90 %</b>	0	😊
Follow Up	89 %	82 %	86 %	80 %	<b>84 %</b>	88 %	85 %	83 %	80 %	<b>84 %</b>	0	😐
Treatment	97 %	97 %	96 %	95 %	<b>96 %</b>	97 %	97 %	91 %	98 %	<b>96 %</b>	0	😊

\*Percentages are determined through a local victim satisfaction survey by Durham Constabulary with results collated quarterly.

Overall satisfaction rates are high, and this is a credit to the Constabulary.

I am pleased to be able to report high victim satisfaction in all areas, and it is extremely encouraging to see that, even with such good scores the previous year, the Constabulary have been able to build on these for 'Whole Experience', 'Ease of Contact' and Arrival Time'.

It is excellent to see that victims have scored the Constabulary particularly highly in relation to the treatment they have received.

Although satisfaction with 'Follow Up' is not as high as the other areas, it is still not at a low level in comparison with other Forces, however I will monitor this to ensure it does not decrease.

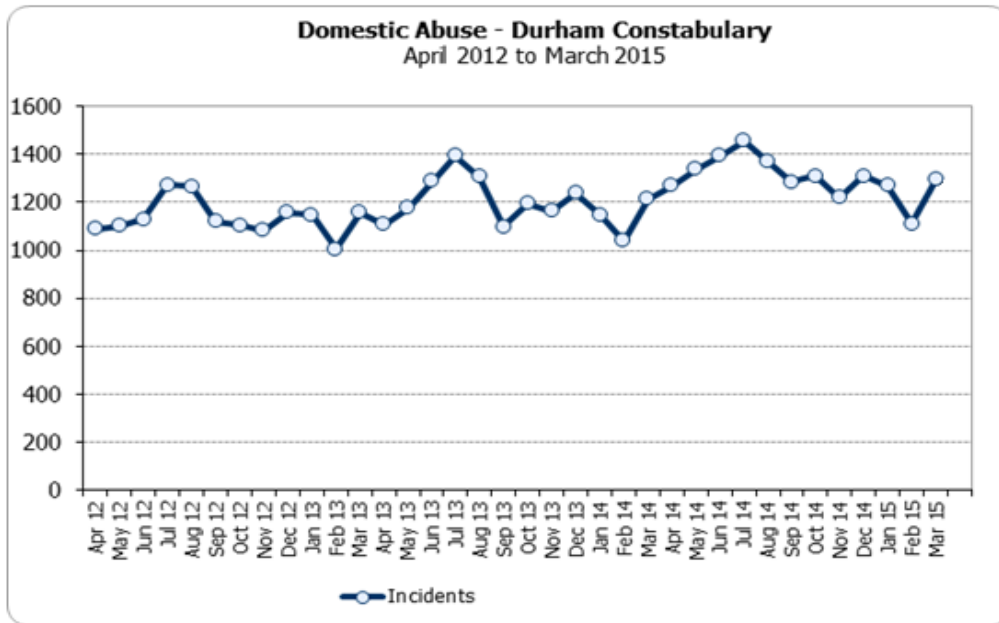
[Next Page](#)

[Return to Main Screen](#)

## Personal Priority 1 – To Reduce the Impact of Domestic Abuse, Particularly Violence Against Women and Girls

	2012/13	2013/14	% Difference	2014/15	% Difference	PCC Verdict
Domestic Abuse*	13,641	14,378	+ 5.4 %	15,672	+ 9 %	😊

\* These are cases that have been flagged with the Domestic Abuse qualifier as Domestic Abuse is not a criminal offence in itself by law



There has been a lot of work by myself, my regional counterparts, the Constabulary and our local partners to increase awareness around domestic abuse. As well as looking to reduce offending, the aim is also to help victims feel confident enough to report and for them to get the services they need. The Constabulary recently launched a new “Sorry is not enough” campaign aimed at increasing awareness of domestic abuse and the help available, with the aim to increase reporting.

The year-on-year increase in reported incidents shown in the table above is encouraging, as it shows more victims are reporting to the police.

The [HMIC](#) inspection in April 2014 of police responses to Domestic Abuse at all forces across the country was extremely positive for Durham Constabulary. They were commended as being one of only eight forces who have been deemed as doing a good job in this area.

A national award was presented to one of Durham’s officers for her outstanding work with a victim of domestic violence, in which she went above and beyond what the public might expect are the normal duties of an officer.

[Next Page](#)

[Return to Main Screen](#)

## Personal Priority 2 – To Reduce the Impact of Hate Crime

A Hate Crime is a crime that is targeted at a specific person or group due to a prejudice against certain characteristics. These protected characteristics are: disability, race or ethnicity, religion, sexual orientation and gender identity. Durham Constabulary, with my support, has also added alternative lifestyle to this list.

Crime Type	2012/13	2013/14	% Difference	2014/15	% Difference	PCC Verdict
Overall Hate Incidents	291	394	+ 35.4 %	375	- 4.8 %	☹️
Racial Prejudice Incidents	193	282	+ 46.1 %	252	- 10.6 %	☹️

Overall Hate Crime incident statistics are generated using protective characteristic qualifiers that are attached by the handler to the case, as they are not all individual criminal offences. Racial prejudice accounts for a large percentage of the overall figures.

It can be seen in the table above that from 2012/13 to 2013/14, the reported incidents increased. This was seen as positive because hate crime is an under-reported and less recognised area of crime, and it suggests awareness and confidence in the police to report has increased. This conclusion was drawn as a number of campaigns were carried out around this time.

However, in the previous year recorded incidents have began to decrease again. There are a number of possible reasons for this: a more accurate recording of hate crime incidents, the Constabulary successfully tackling offenders the previous year, or an increase in prejudice last year in the wake of the murder of Lee Rigby that has now subsided. I have requested a report from the Constabulary looking into this in more detail to ensure confidence in the Police to report is not reducing.

Durham Constabulary is focusing on the levels of service these victims receive, with satisfaction surveys being completed. However, numbers are so low, especially with those hate crimes that are not associated with racial prejudice, they have not yet gathered sufficient data to be able to generalise results across the Constabulary. I have been assured that they will continue to monitor the satisfaction surveys to ensure these victims are consistently receiving optimum service levels. I hope to be able to bring you data on this in the next few months.

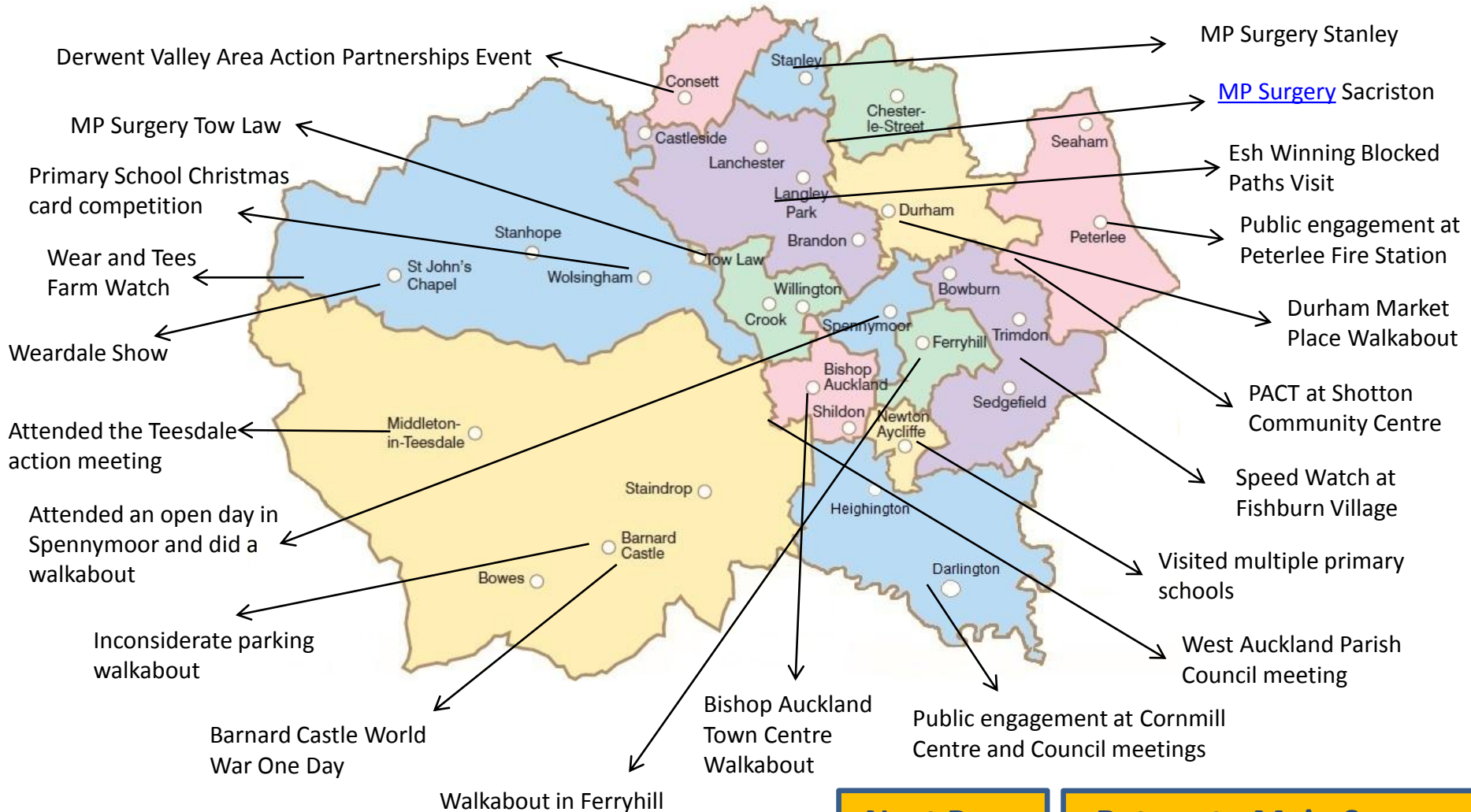
[Next Page](#)

[Return to Main Screen](#)



## Personal Priority 3 – Improve Engagement with Local Communities Across the Constabulary Area

I attend many events and hold my own engagement activities with the community. Below are some of the key examples of places I have been. I keep track of my engagement to ensure I travel across the whole of the area and allow all residents the chance to attend a local meeting with me and have a voice.



[Next Page](#)

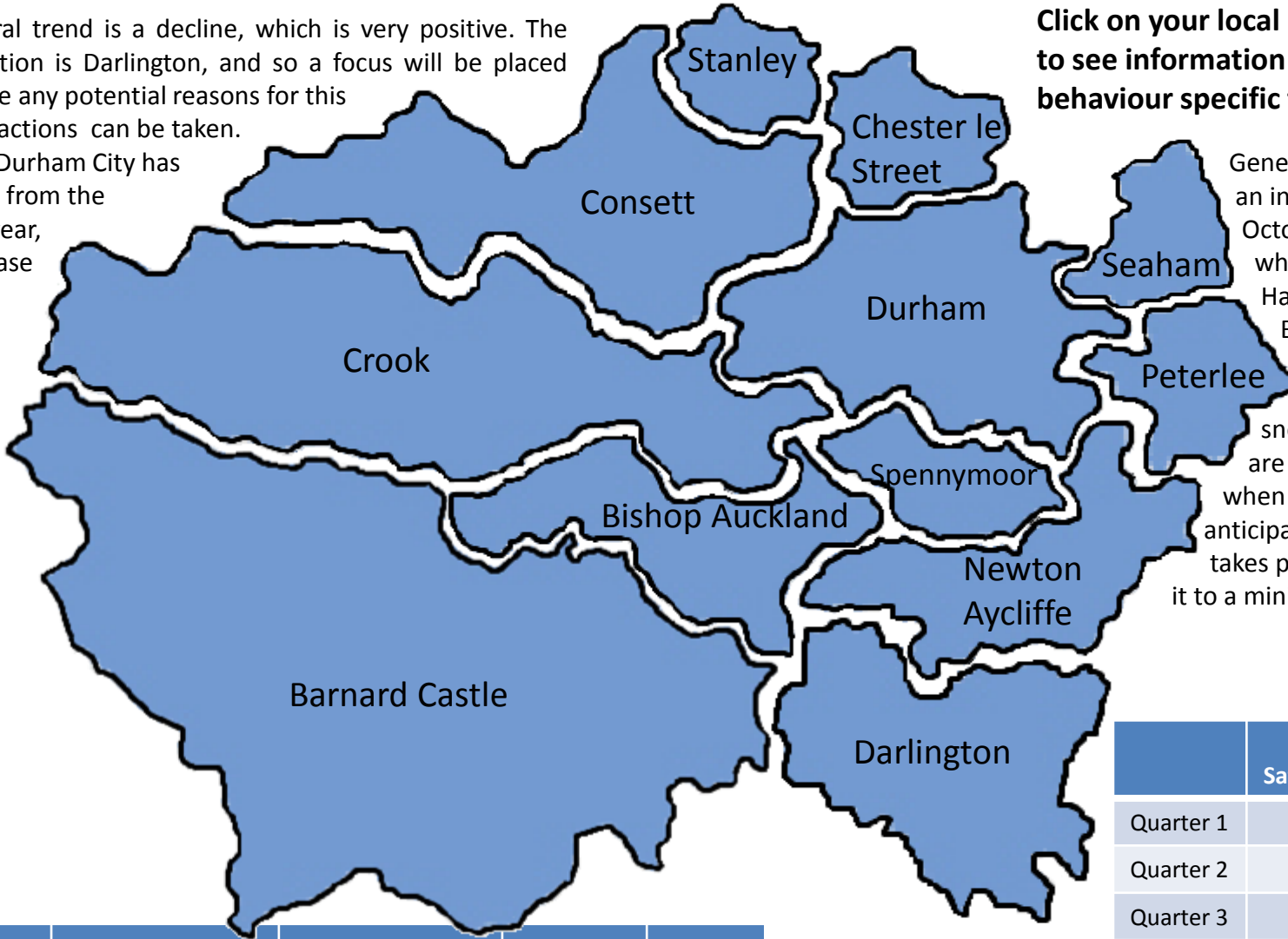
[Return to Main Screen](#)



# Community Priority 1 – To Tackle [Anti-Social Behaviour](#)

The general trend is a decline, which is very positive. The key exception is Darlington, and so a focus will be placed here to see any potential reasons for this and what actions can be taken.

Although Durham City has increased from the previous year, this increase is now declining again.



Click on your local policing sector to see information on anti-social behaviour specific to your area.

General patterns show an increase around October/November, which coincides with Halloween and Bonfire Night, and January due to the snow and snowballing. These are particular times when the Constabulary anticipates an increase and takes precautions to keep it to a minimum.

	2013/14	2014/15	% Difference	PCC Verdict
Anti Social Behaviour	29,638	28,735	- 3 %	😊

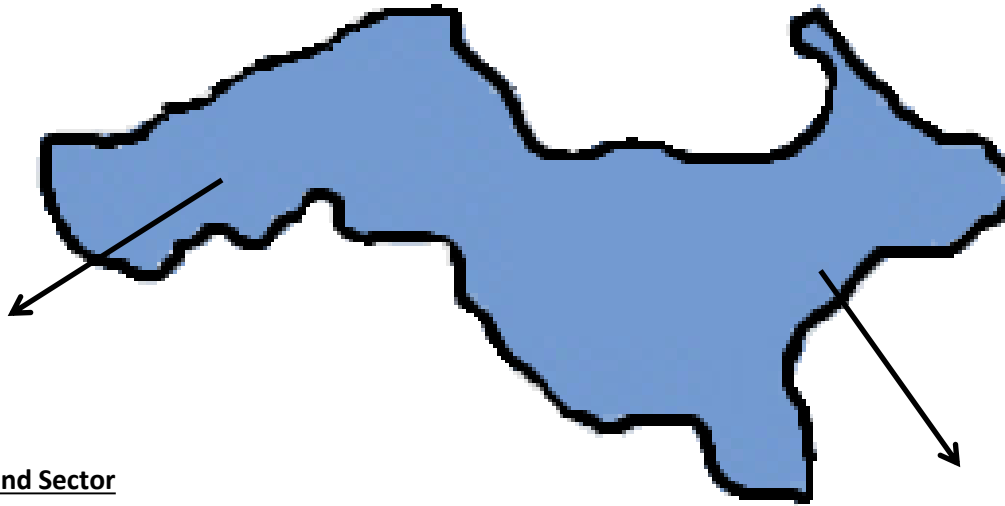
	Public Satisfaction	PCC Verdict
Quarter 1	86%	😊
Quarter 2	88%	
Quarter 3	90%	
Quarter 4	89%	

[Next Page](#)

[Return to Main Screen](#)

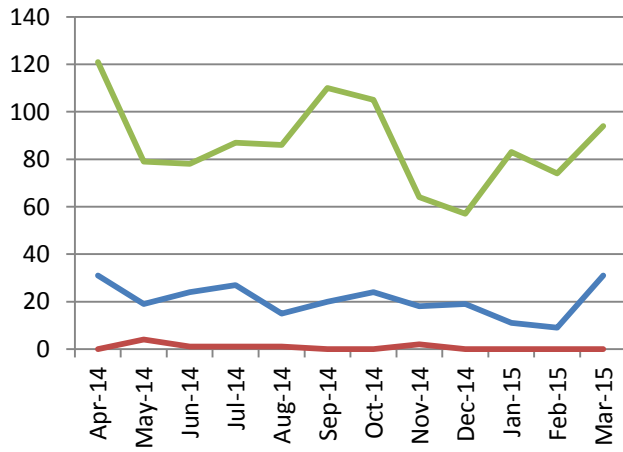
# Community Priority 1 – To Tackle Anti-Social Behaviour

## Bishop Auckland



- Alcohol Related
- Drugs Related
- Youth Related

### Bishop Auckland Sector



	2013/14	2014/15	% Difference	PCC Verdict
Total Anti-Social Behaviour	2,534	2,444	- 3.6 %	😊

[Back to Map](#)

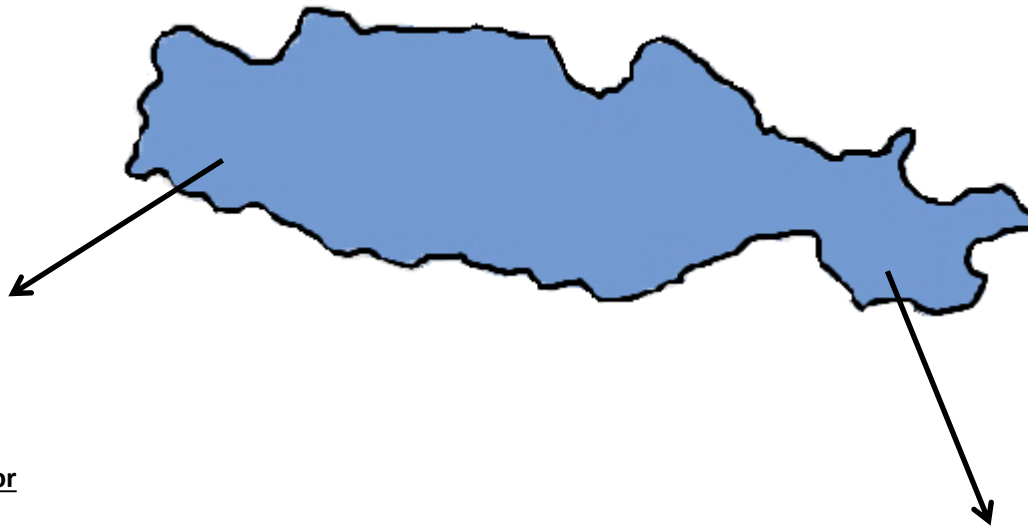
[Next Page](#)

[Return to Main Screen](#)

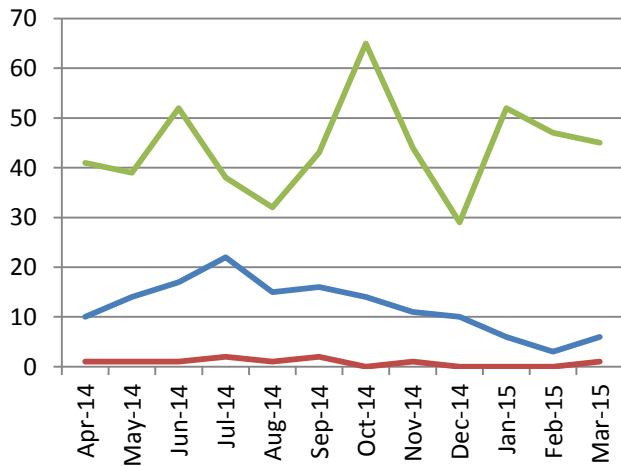
# Community Priority 1 – To Tackle Anti-Social Behaviour

## Crook

- Alcohol Related
- Drugs Related
- Youth Related



### Crook Sector



	2013/14	2014/15	% Difference	PCC Verdict
Total Anti-Social Behaviour	1,508	1,394	- 7.6 %	😊

[Back to Map](#)

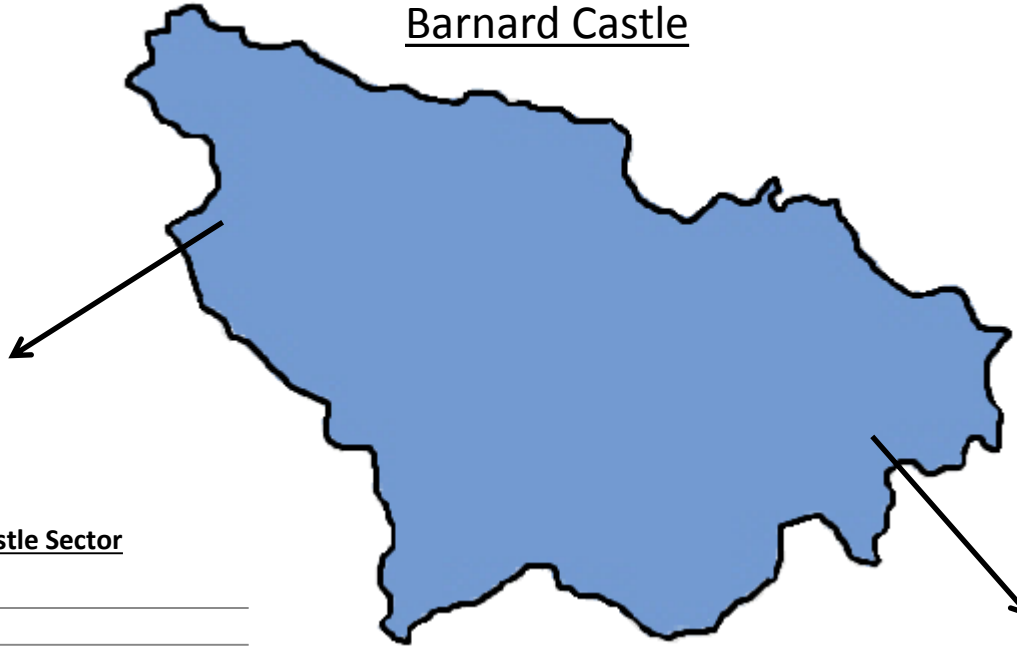
[Next Page](#)

[Return to Main Screen](#)

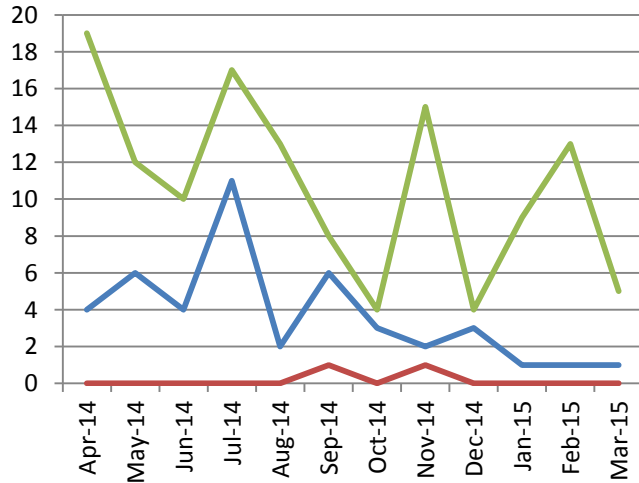
# Community Priority 1 – To Tackle Anti-Social Behaviour

## Barnard Castle

- Alcohol Related
- Drugs Related
- Youth Related



### Barnard Castle Sector



	2013/14	2014/15	% Difference	PCC Verdict
Total Anti-Social Behaviour	453	378	- 16.6 %	😊

[Back to Map](#)

[Next Page](#)

[Return to Main Screen](#)

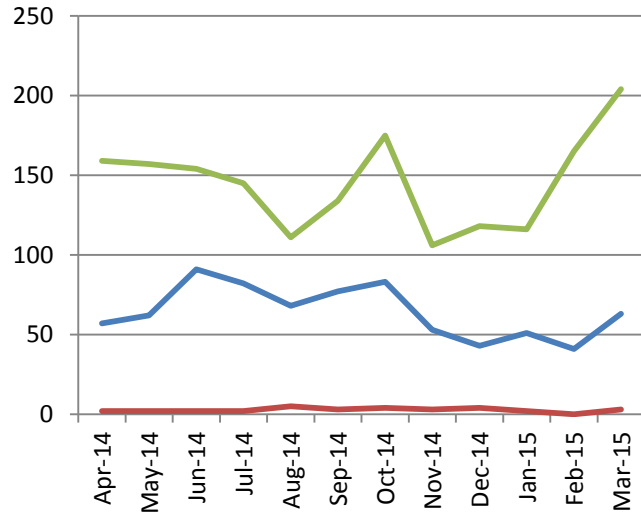
# Community Priority 1 – To Tackle Anti-Social Behaviour

## Darlington



- Alcohol Related
- Drugs Related
- Youth Related

### Darlington Sector



	2013/14	2014/15	% Difference	PCC Verdict
Total Anti-Social Behaviour	5,362	5,478	+ 2.2 %	☹️

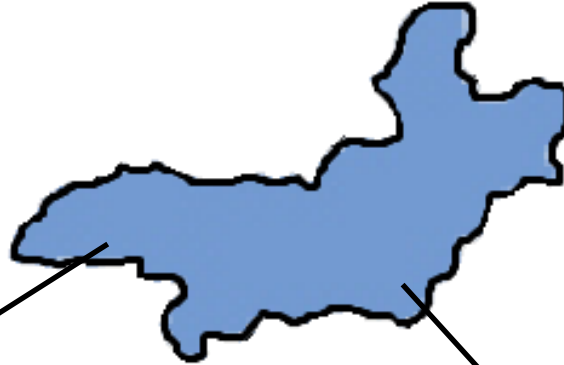
[Back to Map](#)

[Next Page](#)

[Return to Main Screen](#)

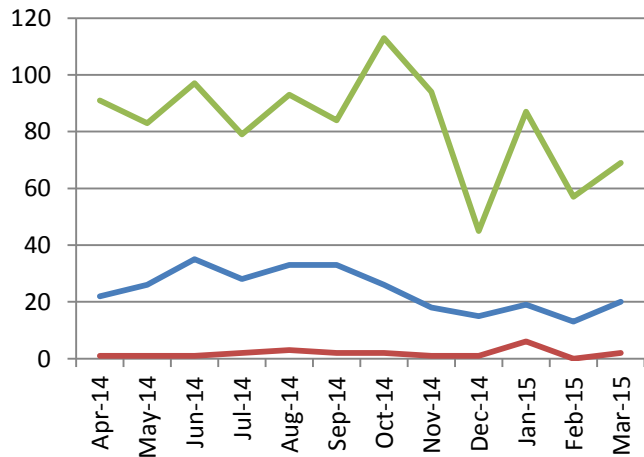
# Community Priority 1 – To Tackle Anti-Social Behaviour

## Newton Aycliffe



- Alcohol Related
- Drugs Related
- Youth Related

### Newton Aycliffe Sector



	2013/14	2014/15	% Difference	PCC Verdict
Total Anti-Social Behaviour	2,619	2,623	+ 0.6 %	☹️

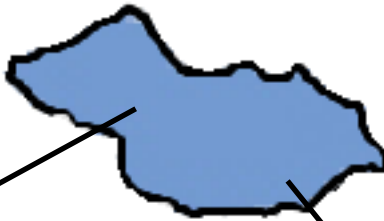
[Back to Map](#)

[Next Page](#)

[Return to Main Screen](#)

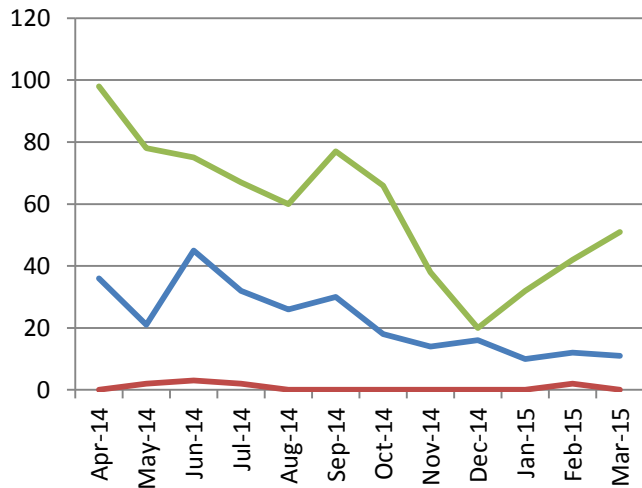
# Community Priority 1 – To Tackle Anti-Social Behaviour

## Spennymoor



- Alcohol Related
- Drugs Related
- Youth Related

### Spennymoor Sector



	2013/14	2014/15	% Difference	PCC Verdict
Total Anti-Social Behaviour	2,202	2,046	- 7.1 %	😊

[Back to Map](#)

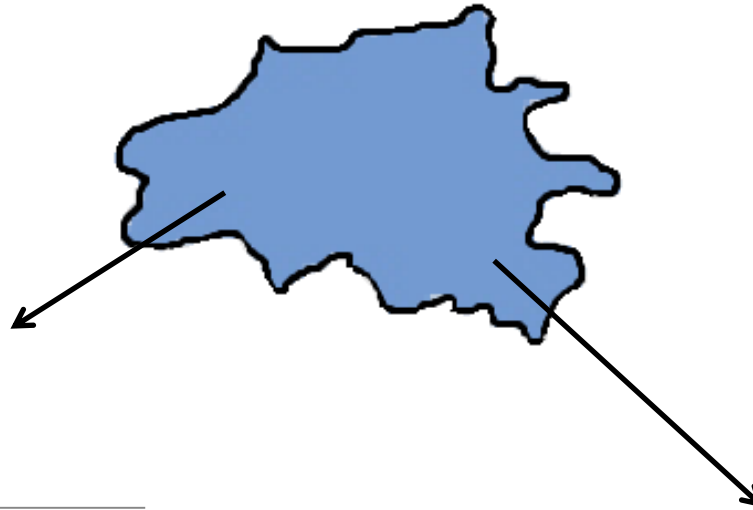
[Next Page](#)

[Return to Main Screen](#)



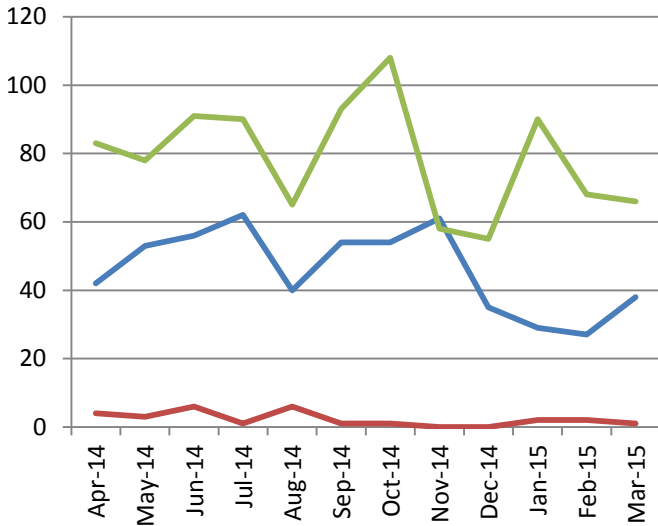
# Community Priority 1 – To Tackle Anti-Social Behaviour

## Durham



- Alcohol Related
- Drugs Related
- Youth Related

### Durham Sector



	2013/14	2014/15	% Difference	PCC Verdict
Total Anti-Social Behaviour	3,265	3,313	+ 1.5 %	☹️

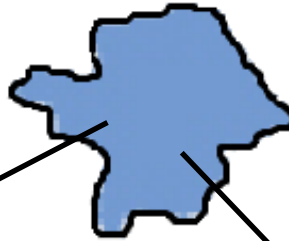
[Back to Map](#)

[Next Page](#)

[Return to Main Screen](#)

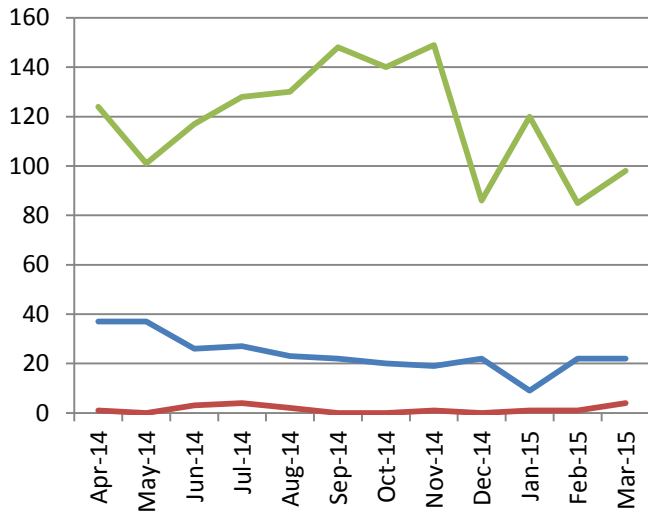
# Community Priority 1 – To Tackle Anti-Social Behaviour

## Peterlee



- Alcohol Related
- Drugs Related
- Youth Related

### Peterlee Sector



	2013/14	2014/15	% Difference	PCC Verdict
Total Anti-Social Behaviour	3,421	3,433	+ 0.4 %	☹️

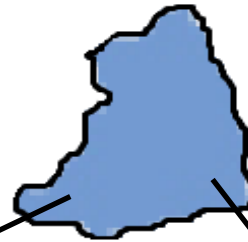
[Back to Map](#)

[Next Page](#)

[Return to Main Screen](#)

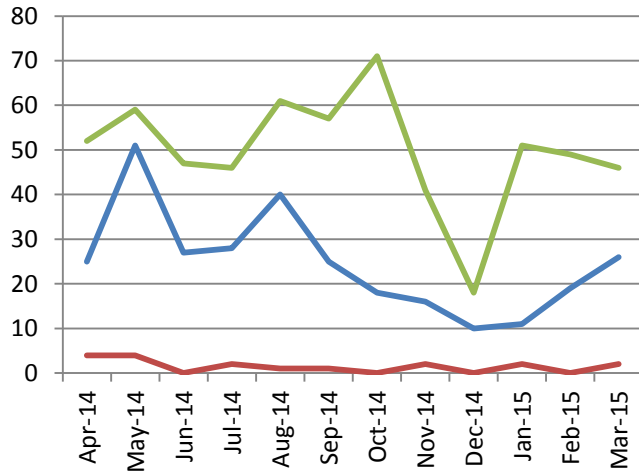
# Community Priority 1 – To Tackle Anti-Social Behaviour

## Seaham



- Alcohol Related
- Drugs Related
- Youth Related

### Seaham Sector



	2013/14	2014/15	% Difference	PCC Verdict
Total Anti-Social Behaviour	1,923	1,922	- 0.05 %	☹️

[Back to Map](#)

[Next Page](#)

[Return to Main Screen](#)

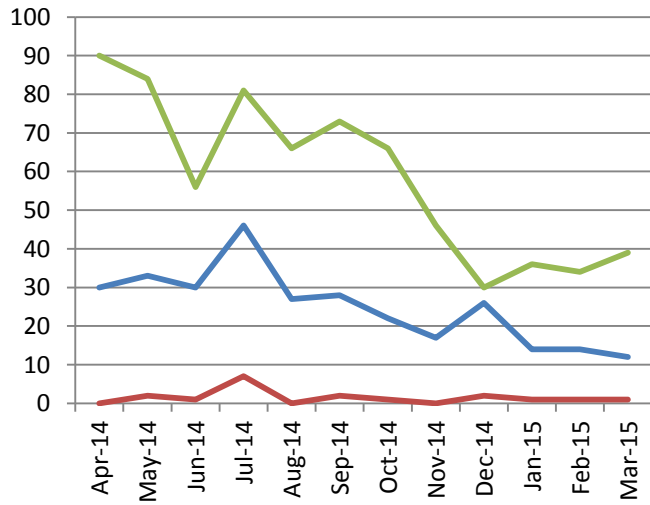
# Community Priority 1 – To Tackle Anti-Social Behaviour

## Chester le Street



- Alcohol Related
- Drugs Related
- Youth Related

### Chester le Street Sector



	2013/14	2014/15	% Difference	PCC Verdict
Total Anti-Social Behaviour	2,298	2,022	- 12 %	😊

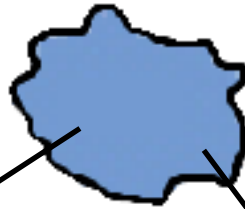
[Back to Map](#)

[Next Page](#)

[Return to Main Screen](#)

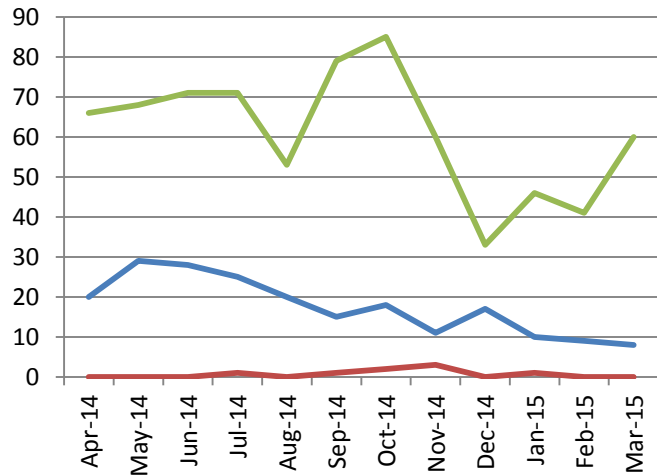
# Community Priority 1 – To Tackle Anti-Social Behaviour

Stanley



- Alcohol Related
- Drugs Related
- Youth Related

**Stanley Sector**



	2013/14	2014/15	% Difference	PCC Verdict
Total Anti-Social Behaviour	2,027	1,782	- 12.1 %	😊

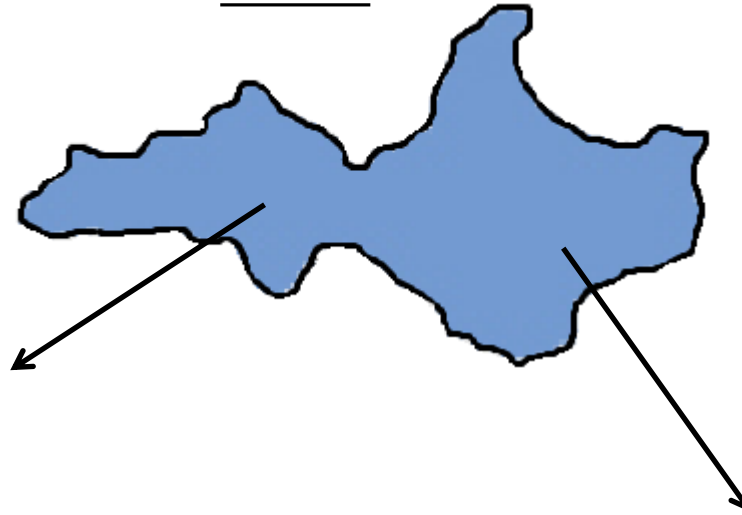
[Back to Map](#)

[Next Page](#)

[Return to Main Screen](#)

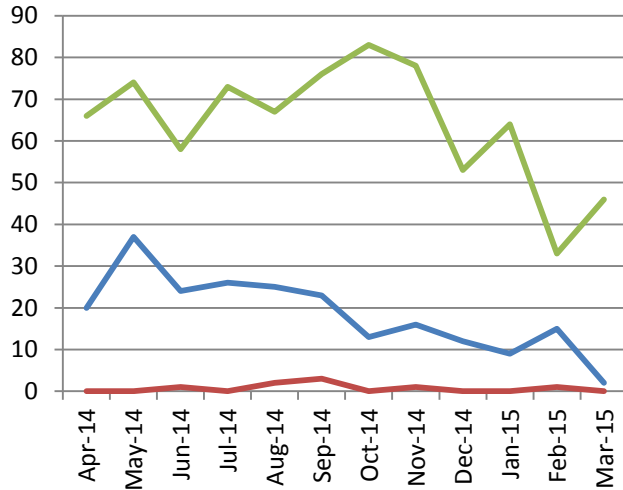
# Community Priority 1 – To Tackle Anti-Social Behaviour

## Consett



- Alcohol Related
- Drugs Related
- Youth Related

### Consett Sector



	2013/14	2014/15	% Difference	PCC Verdict
Total Anti-Social Behaviour	2,026	1,900	- 6.2 %	😊

[Back to Map](#)

[Next Page](#)

[Return to Main Screen](#)

## Community Priority 2 – To Tackle the Harm Caused to Individuals and Communities by Alcohol and Drugs

Crime Type	2012/13	2013/14	% Difference	2014/15	% Difference	PCC Verdict
Alcohol related incidents (% of all incidents)	Statistics are not comparable this far back as there was a change in recording	11.2 %	-	11.2 %	0	☹️
Drug offences	1,237	1,397	+ 12.9 %	1,426	+ 2.1 %	😊
Drug offences outcome rate	98.5 %	96.7 %	- 1.8 %	97.6 %	+ 0.9 %	😊

Due to fantastic targeted operations by the Constabulary, the number of recorded drug offences has increased, with excellent outcome rates. This is very encouraging. Although the percentage of alcohol related incidents has not increased and the percentage relatively low, I feel this is certainly an area to also highlight, as a decrease could contribute to reductions across many crime types.

Local Survey	Quarter 1	Quarter 2	% Difference	Quarter 3	% Difference	Quarter 4	% Difference	PCC Verdict	Working to reduce the harm caused by both alcohol and drugs is an area in which I am working closely with partner organisations, including the Darlington Community Safety Partnership and Safe Durham Partnership, as we all share this priority.
% People who think people drinking and causing a nuisance in public spaces is a problem	36.7 %	38.3 %	+ 1.6 %	40.3 %	+ 2 %	35.3 %	- 5 %	☹️	
% People who think underage drinking and sale of alcohol to youths is a problem	45 %	44.7 %	- 0.3 %	52 %	+ 7.3 %	43.7 %	- 8.3 %	☹️	
% People who think drug dealing and abuse is a problem	36 %	38.7 %	+ 2.7 %	43.7 %	+ 5 %	39 %	- 4.7 %	☹️	

Unfortunately, public perceptions around the problems caused by drugs and alcohol in our area are not as positive, and so this is an area I have highlighted to be focused on. However, I appreciate that public perceptions can be influenced by factors outside of the police's control.

There are positive signs efforts are working as quarter 4 has shown decreases in negative perceptions for all areas.

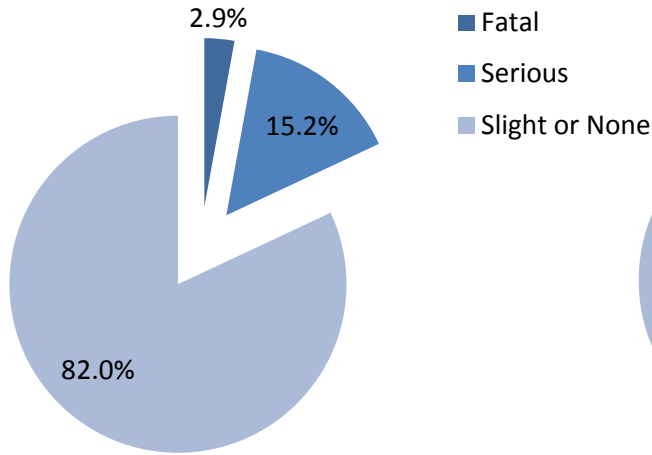
[Next Page](#)

[Return to Main Screen](#)



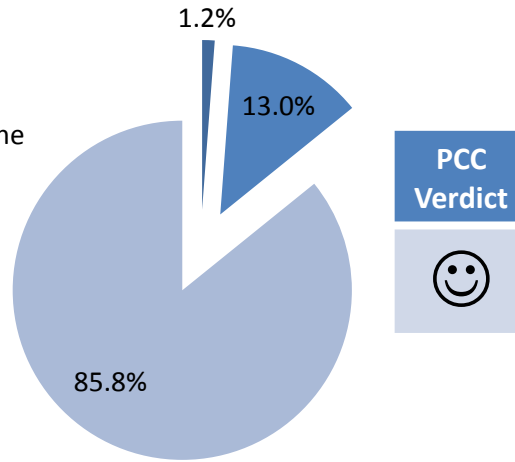
# Community Priority 3 – To Improve Road Safety by Tackling Careless and Dangerous Driving, Speeding and Other Related Road Safety Issues

Road Traffic Accidents 2013/14



Total: 220 out of 1200 road traffic collisions where person(s) killed or seriously injured

Road Traffic Accidents 2014/15



Total: 167 out of 1177 road traffic collisions where person(s) killed or seriously injured



A small percentage of the road traffic accidents in County Durham and Darlington in the last 2 years have resulted in fatal or serious injuries. It is positive to see these percentages declining, but I will endeavour to work with the Constabulary and partners to reduce numbers further. It is also positive to see the overall number of reported incidents declining.

Despite these low figures, the local survey responses show people still consider road safety issues to be a problem, although perceptions have improved in the last quarter.



This is an area that requires joint working with partners and I will continue to support Durham County Council's proposal to implement 20mph speed limit zones. I have encouraged the Constabulary to continue Community Speedwatch with the support of volunteers and have funded the purchase of traffic calming devices.

Local Survey	Quarter 1	Quarter 2	% Difference	Quarter 3	% Difference	Quarter 4	% Difference	PCC Verdict
People who think that dangerous driving is a problem	49.7 %	51 %	+ 1.3 %	53 %	+ 2 %	48 %	- 5 %	☹️
People who think that parking is a problem	47.3 %	52 %	+ 4.7 %	56.7 %	+ 4.7 %	50 %	- 6.7 %	☹️
People who think that speeding vehicles are a problem	67.3 %	65.7 %	- 1.6 %	66 %	+ 0.3 %	61.3 %	- 4.7 %	☹️


[Next Page](#)

[Return to Main Screen](#)

## Community Priority 4 – To Make our Policing Service Visible and Accessible at all Times

Local Survey	Quarter 1	Quarter 2	% Difference	Quarter 3	% Difference	Quarter 4	% Difference	PCC Verdict
People who think the police in this area are easy to contact	61 %	59 %	- 2 %	59 %	0	58 %	- 1 %	
People who are aware the police hold regular, public meetings, to discuss with members of the public the issues the police should be dealing with (PACT)	56 %	55 %	- 1 %	56 %	+ 1 %	55 %	- 1 %	

The Constabulary has advised me they are aware that these figures are linked to overall public confidence and are working on increasing public awareness of what the police are doing. I have requested an update on police engagement with the community be provided to me quarterly, which I will be able to pass on to you.

	March 2014	March 2015	Difference	PCC Verdict
Police Officers	1320	1199	- 121	 I am happy with the Constabulary's performance; not about the cuts to police officer numbers.
Special Constabulary	85	110	+ 25	
Police Staff*	1036	1078	+ 42	
Volunteers	227	248	+ 21	
<b>Total</b>	<b>2668</b>	<b>2635</b>	<b>- 33</b>	

\*Police staff includes PCSOs

I have made an explicit promise to protect neighbourhood policing. Despite numbers in police officers declining in the past year, recruitment is currently under way for new police officers and special constables. Furthermore, the [HMIC](#) Value for Money profile shows the Constabulary is spending more on having visible frontline officers rather than staff, compared to the most similar forces. The number of support staff is stable, rather than in decline, which is again positive at a time when the budgets are being cut. The capacity of the Constabulary has been upheld, once new recruits are taken into consideration, despite austerity. The Constabulary has reviewed its shift pattern in order to improve allocation of resources to peak periods of demand. The Constabulary is looking to introduce mobile data technology to increase visibility, by reducing the need for officers to return to stations.

[Next Page](#)

[Return to Main Screen](#)

## High Quality Policing

Crime Type	2012/13	2013/14	Difference	2014/15*	Difference	PCC Verdict
All Crime (Excl. Medomsley)	29,921	32,156	+ 7.5 %	32,206	+ 0.15 %	☹️
Violence Against the Person <sup>▼</sup>	4,375	5,151	+ 17.7 %	6,538	+ 26.9 %	☹️
Sexual Offences <sup>▼</sup> <sup>▼</sup> Includes Medomsley	367	861	+ 134.6 %	975	+ 13.2 %	☹️
Burglary	4,062	4,283	+ 5.4 %	3,926	- 8.3 %	😊
Vehicle Crime	3,399	3,357	- 1.2 %	2,695	- 19.7 %	😊
Criminal Damage (Inc. Arson)	6,807	6,938	- 1.9 %	6,712	- 3.3 %	😊
Metal Theft	1421	1336	- 6 %	882	- 34 %	😊

\*These figures were generated in May when some incidents may have been no-crimes since 31<sup>st</sup> March, meaning a slight variation from figures reported in April

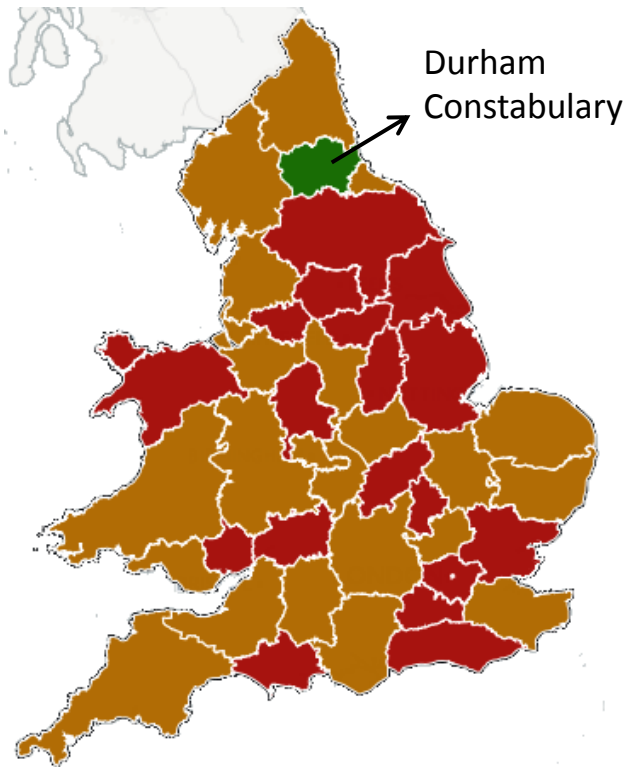
- The increase in violence against the person (VAP) displayed in the figures above is resulting in a knock-on effect on the overall crime figures, however, I am assured that this is due to a change in the way this crime is recorded by the police rather than a growth in this crime type. Furthermore, all forces in the country have experienced an increase in recorded VAP in the 2014/15 financial year.
- For 12 months to the end of September 2014, when ranked with all 43 other Forces in the country, Durham were in the 3<sup>rd</sup> quartile for VAP and in the lowest tier of the 2<sup>nd</sup> quartile for all crime (per 1000 population - 1<sup>st</sup> quartile being the highest level of crime and 4<sup>th</sup> the lowest).
- The sexual offences statistics are inclusive of victims of historic incidents, who are now coming forward. Offences are recorded at the time they are reported rather than when they happened, resulting in an apparent increase. The 'all crime' figure excludes Medomsley but it includes a large number of other historic abuse cases that have been reported in the wake of high profile incidents such as those involving Jimmy Savile and Rolf Harris. It is positive that victims of sexual offences, which are under-reported, are feeling more confident in the Police to come forward.
- Compared to the most similar forces for 2013/14, Durham not only has lower levels of crime but has higher detection, charge and caution rates.
- I will continue to monitor the level of crime, across all crime types, throughout this new year to ensure the Constabulary is continuing to respond to any changes and patterns, and maintain our area as one of the safest places in the country.

[Next Page](#)

[Return to Main Screen](#)

## HMIC Inspections

### Durham Constabulary is the country's top performing police force at investigating crimes



How effective is the force at investigating offending?

- OUTSTANDING
- GOOD
- REQUIRES IMPROVEMENT
- INADEQUATE (NONE RANKED)

In the first Annual Assessment of Policing in England and Wales 2014 (PEEL Report), HMIC assessed all 43 police forces in the country for effectiveness, efficiency and legitimacy.

I am incredibly happy to be able to report that Durham was the only force to be rated as **'outstanding'** at investigating crimes. The force was also judged to be 'outstanding' at tackling anti-social behaviour and 'good' at preventing offending and reducing crime.

This is excellent to see, and it is reassuring to all citizens that their police force is one of the best in the country. However, I want to stress that both myself and the Chief Constable are not complacent, and we will continue to strive to achieve even higher levels of service.

I am committed to protecting neighbourhood policing as I know it is important to the public. In May 2014, following a 'Policing in Austerity' report reviewing six forces, HMIC praised Durham for their commitment to having local officers designated to specific neighbourhoods where they can engage with communities, despite the financial difficulties being faced.

HMIC's Value for Money Report 2014 shows Durham Constabulary has higher detection rates, charges and cautions than the most similar forces, but lower crime figures.

[Next Page](#)

[Return to Main Screen](#)

## Conclusions

- Taking into account the current period of austerity, the number of historic sexual offences now being reported, and government cuts, I am satisfied with the overall performance for this past year. However, I will continue to closely monitor crime levels as I want to see a reduction in crime in our area.
- There has only been an increase in 50 crimes compared with the previous year, which is less than 1 per week. A National document to be released in the coming month is expected to report an increase in crime of around 3.2% across the country.
- An increase in public confidence in the police is leading to increased reporting of crimes, which is very positive and will continue to be a focus.
- Victim satisfaction scores are very positive and something to be commended.
- Given the cuts to funding police forces nationwide are experiencing, this performance data shows the Force is efficiently using their budget to tackle offenders and reduce crime.
- It is excellent to have received such positive feedback from HMIC, supporting our positive conclusions.



[Next Page](#)

[Return to Main Screen](#)

# Glossary

<b>Anti-Social Behaviour</b>	A wide range of behaviours, which cause alarm, distress or harassment to at least one person. They are separated into 3 categories: Personal (targeted at a specific individual or group), Nuisance (causing annoyance to the wider community) and Environmental - (incidents aimed at the physical environment). The force add flags highlighting alcohol, youth and drug related incidents. In some cases one incident can have more than one flag (e.g. both alcohol and youth related), which means it will be included in the figures on the local graphs twice (once in the alcohol and a once in the youth). But, this is not the case in the overall figures.
<b>CSEW</b>	The Crime Survey England and Wales is a survey about experiences of crime from around 38,500 members of the public.
<b>Crime Statistics</b>	All crime statistics in this document are from the Durham Constabulary recorded crime and incident database.
<b>HMIC</b>	Her Majesty's Inspectorate of Constabulary, inspect the Country's police forces.
<b>Local Survey</b>	Local survey conducted by Durham Constabulary.
<b>Medomsley Case</b>	Also known as Operation Seabrook, this is an investigation into serious sexual and physical abuse carried out by staff against inmates at the Medomsley Detention Centre near Consett, mainly in the 1970's and 1980's.
<b>MP Surgery</b>	A meeting for local people to attend and discuss any concerns with their local Member of Parliament (MP).
<b>Mutual Gain</b>	Multiple organisations working together increase social capital in certain areas to build strong communities and increase confidence
<b>Park, Walk and Talk</b>	In certain crime and anti-social behaviour hot spots police officers are to get out of their vehicles and talk to people, during peak crime times
<b>Victim Based Crime</b>	These are crimes against a victim, and are split into 5 categories: violence against the person, sexual offences, robbery, theft offences, criminal damage and arson offences
<b>Victim Satisfaction Rates</b>	These are obtained by the Constabulary through surveys with local victims.



- I am happy with the performance.



- I will be closely monitoring performance.  
This is an area for continued focus.



- I am unhappy with the performance  
and looking at ways to improve.

[Return to Main Screen](#)