



## WILDLIFE OUTAGE PROTECTION FOR SUBSTATIONS

Did you know Birdguard™ Products are also used in Substations? We are proud to partner with Power Utility companies around the world, all sharing a common goal of realizing uninterrupted service, associated cost savings and reliability.

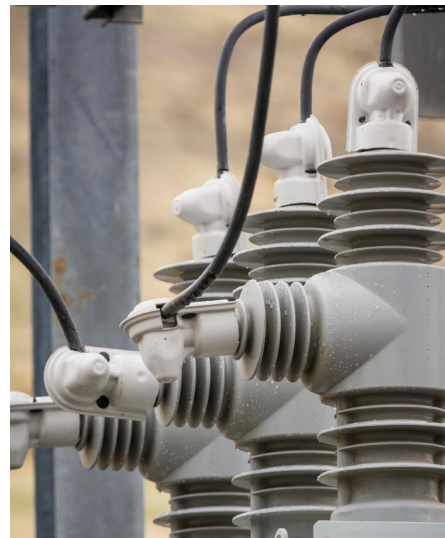
Our Covers are designed for all forms of power distribution:

- Distribution
- Transmission
- Substation

Columbia Basin Electric Coop Substations suffered wildlife caused power outages 3-4 times per year. Expenses and consumer downtime was unacceptable.

Kaddas Birdguard™ Engineers conducted a full site inspection, measured hardware for Part Fit Guarantee, designed and manufactured all covers and trained CBEC personnel for proper installation.

Zero outages have occurred since Birdguard™ products were installed in 2014.





## Columbia Basin Electric Coop

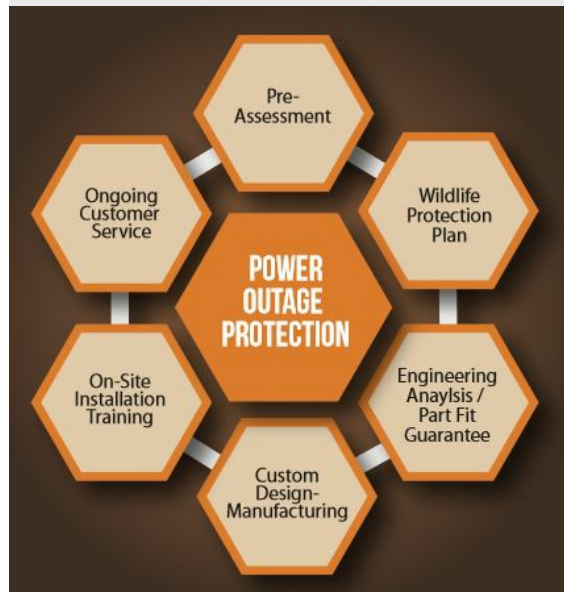
"Kaddas was receptive and creative in producing a product to meet our specific needs. Overall, I think the covers look fantastic!

We have not had a power outage, since the covers have been installed. Thanks to the folks at Kaddas for working with us on this project."

**-Brian Kollman**  
*Operations Manager*  
Columbia Basin Electric Cooperative



## Power Outage Protection



### Why Choose Kaddas?

- V0 Flammability Rating
- IEEE & ASTM Tested up to 72kV
- UV Resistant
- Fire and Flame Resistant
- Self-Extinguishing
- Easily Installed and Re-usable
- WBENC Woman Owned Business
- ISO 9001:2015 Certified
- 100% Made in the U.S.A., by choice.