



NAMIBIA
TOURS & SAFARIS

19-DAY
ULTIMATE NAMIBIA SAFARI
CAMPING OPTION



Overview

| | |
|------------------------|-------------------------|
| Number of days: | 19 days / 18 nights |
| Accommodation: | camping & lodging combo |
| Dates: | flexible |
| Option: | private self-drive |
| Prepared by: | NTS |

The best of Namibia in a 19-Day Ultimate Namibia Safari starting and ending in Windhoek that includes the highlights of Namibia: The Kalahari; Fish River Canyon; Lüderitz; Sossusvlei, with its great sand sea; the seaside towns of Swakopmund and the Skeleton Coast; Damaraland, with its fascinating rock formations, Bushman rock art and desert-adapted wildlife; Kaokoland, the last frontier of true wilderness and the realm of the nomadic Himba people; and Etosha National Park - one of Africa's great game parks.

Itinerary at a Glance

| Days | Destination | Lodge | Includes |
|---------|------------------------------|----------------------------|----------|
| 1 | Windhoek | Am Weinberg Boutique Hotel | BB |
| 2 | Kalahari | Bagatelle Campsite | no meals |
| 3 | Fish River Canyon | Canyon Roadhouse Campsite | no meals |
| 4 & 5 | Lüderitz | Alte Villa Boutique | BB |
| 6 & 7 | Sossusvlei | Sesriem Campsite | no meals |
| 8 & 9 | Swakopmund / Walvis Bay | Swakopmund Luxury Suites | BB |
| 10 | Damaraland | Madisa Campsite | no meals |
| 11 | Kaokoland - Opuwo | Opuwo Campsite | no meals |
| 12 & 13 | Kaokoland – Epupa Falls | Omarunga Campsite | no meals |
| 14 | Etosha National Park | Olifantsrus Campsite | no meals |
| 15 | Etosha National Park | Okaukuejo Campsite | no meals |
| 16 & 17 | Etosha National Park | Onguma Tamboti Campsite | no meals |
| 18 | Central - AfriCat Foundation | Okonjima Omboroko Campsite | no meals |
| 19 | Windhoek | END | |

Legend:

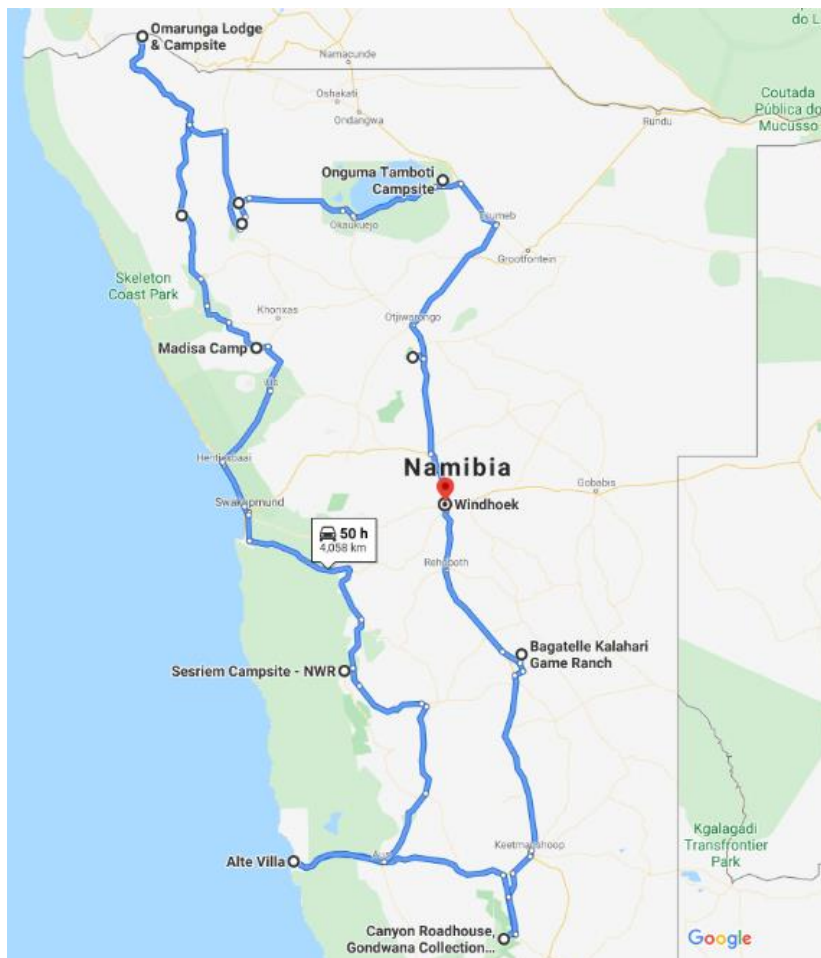
BB: bed & breakfast DBB: dinner, bed & breakfast FB: all meals FI: fully inclusive of meals and activities

Click on the lodge name and it will direct you to our website where you can read more about it.

Accommodation subject to availability - with minimum extra cost, up-grade any accommodation - contact us for suggestions.



Route Map



NETT STO Costs

| No. of Guests | 2 | 4 |
|--|------------|------------|
| 1st January – 30th June 2022 – Low Season | | |
| Cost per person sharing | ZAR 35,205 | ZAR 24,640 |
| 1st July – 31st December 2022 – High Season | | |
| Cost per person sharing | ZAR 38,415 | ZAR 26,355 |
| * A single supplement would apply for lodging nights if staying in a single room | | |



Includes

- Accommodation as indicated – can change depending on availability and request at time of booking
- Meals as indicated
- Meet and greet upon arrival
- Car hire as below
- Airport transfers on arrival and for departure
- Tour file with detailed itinerary, map with route descriptions, vouchers etc.
- 24 hour personal and friendly support
- Fast and efficient response to service providers

Vehicle Hire as Included

Suggested vehicle type:

4X4 Double Cabin – Manual Transmission

With 1 x Roof top tent & camping equipment for 2 pax

With 2 x Roof top tents & camping equipment for 4 pax



Includes:

ZERO Excess – maximum cover, GPS rental, tyre & windscreen, unlimited mileage, 2nd spare tyre & additional driver, contract fee

Excludes:

Refundable vehicle deposit (N\$5,000)

Refundable camping equipment deposit (N\$6,000)

Excludes

- Items of a personal nature
- Optional extra activities
- International flights
- Holiday or personal insurance
- Staff gratuities
- Park entry fees
- Fuel for vehicle rental
- Extras / additional camping equipment on request
- Visas and visa applications



Itinerary and Accommodation

1 Windhoek Am Weinberg Boutique Hotel BB – Courtyard Fountain Level

- You will be met by the car rental company representative on arrival and transferred to their offices in Windhoek to complete all rental procedures
- You will then meet with our representative to hand over your travel documents
- The remainder of the day can be spent relaxing at your own leisure
- For dinner tonight, you can head into town for a bite to eat at one of Windhoek's well known restaurants



2 Kalahari Bagatelle Campsite no meals

Windhoek – Kalahari 245km - approximately 3 to 4 hours

- After breakfast, you can still pop into town for anything you might need and then depart heading south from Windhoek to the red sand dunes of the Kalahari
- Spend the remainder of the day at leisure in this beautiful setting
- Optional activities here include game and nature drives as well as a Bushman experience





| | | | |
|----------|--------------------------|----------------------------------|-----------------|
| 3 | Fish River Canyon | Canyon Roadhouse Campsite | no meals |
|----------|--------------------------|----------------------------------|-----------------|

Kalahari – Fish River Canyon 440km - approximately 7 to 8 hours

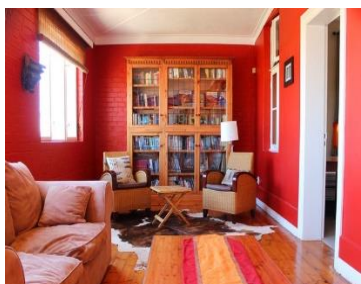
- Head south via Mariental and Keetmanshoop to the Karas region, the Fish River Canyon area
- Detour en-route to Giant's Playground and Quiver Tree Forest, a beautiful site where large aloes grow between rocks
- If time permits, visit the Fish River view point at sunset to end the day



| | | | |
|------------------|-----------------|----------------------------|-----------|
| 4 & 5 | Lüderitz | Alte Villa Boutique | BB |
|------------------|-----------------|----------------------------|-----------|

Fish River Canyon – Lüderitz 385km - approximately 5 to 6 hours

- Enjoy a morning canyon view before heading west through harsh but beautiful terrain which changes to wide open desert plains as you make your way to the coast
- Your drive will take you via Aus, where you may be lucky to view the wild desert horses in the area
- 1 full day is set aside to enjoy the historic town of Lüderitz and visit the amazing Kolmanskop Ghost Town
- Lunches and dinners can be enjoyed at any of the local restaurants in town





| | | | |
|------------------|---------------------|-------------------------|-----------------|
| 6 & 7 | Namib Desert | Sesriem Campsite | no meals |
|------------------|---------------------|-------------------------|-----------------|

Lüderitz – Sossusvlei 505km - approximately 7 to 8 hours

- After breakfast, you will depart to the “sea of sand” backtracking to Aus and then heading north via Helmeringhausen
- Wake up early to head into the park just before sunrise
- Spend the whole day in the beautiful Sossusvlei area, exploring the highlights: Sossusvlei, Dead Vlei, Dune 45, Big Daddy, Elim Dune and the Sesriem Canyon
- Return to camp for lunch or arrange to take some lunch along to enjoy in the dunes and return late afternoon for a well-earned rest
- Optional extra activities: Guided Sossusvlei excursion, Hot air balloon safari, Nature drives



| | | | |
|------------------|-------------------|---------------------------------|-------------------------|
| 8 & 9 | Swakopmund | Swakopmund Luxury Suites | BB - Luxury Room |
|------------------|-------------------|---------------------------------|-------------------------|

Sossusvlei – Swakopmund 350km - approximately 5 to 6 hours

- Depart after breakfast and head north to Solitaire, then west crossing the Tropic of Capricorn, through the Gaub and Kuiseb Canyons via the Namib Gravel Plains to the coast
- Either via Walvis Bay to Swakopmund, or (recommended) detour via Ganab to the Welwitschia Plains and Moon Landscape
- The Namibian coastline is generally known as The Skeleton Coast due to the barren areas, ship wrecks and, in days gone by, whale skeletons left on the beach
- 1 full day is set aside for this lovely area where Swakopmund and Walvis Bay offer a wide range of activities such as: Dolphin cruise, Sandwich Harbour excursion (a real Skeleton Coast experience), Dune quad biking, Sand boarding, Sea kayaking, Lots more...
- Lunches and dinners can be enjoyed at any of the many great cafés or restaurants overlooking the sea





| | | | |
|-----------|-------------------|------------------------|-----------------|
| 10 | Damaraland | Madisa Campsite | no meals |
|-----------|-------------------|------------------------|-----------------|

Swakopmund – Damaraland 445km - approximately 7 to 8 hours

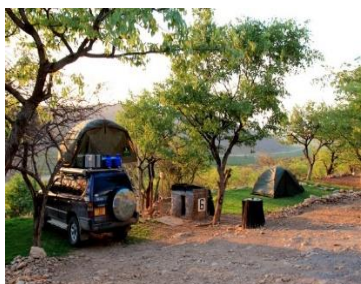
- Head north along the Skeleton Coast, via Henties Bay to visit the Cape Cross seal colony. Along the way, stop at the Lichen Fields as well as the ship wreck between the colourful small town of Wlotskasbaken and Henties Bay
- Backtrack to Henties Bay and head inland through wide open plains to Uis, then north to the Twyfelfontein area
- Visit to Namibia's Open Air Museum, the Twyfelfontein Rock Engravings as well as the interesting Organ Pipes rock formations and Burnt Mountain
- Visit the Damara Living Museum for a hint of culture



| | | | |
|-----------|--------------------------|-----------------------|-----------------|
| 11 | Kaokoland - Opuwo | Opuwo Campsite | no meals |
|-----------|--------------------------|-----------------------|-----------------|

Damaraland – Opuwo 340km - approximately 5 to 6 hours

- Depart the Twyfelfontein area and head north via Palmwag, crossing the Hoanib River, up and over Joubert Pass to Opuwo, the centre of Kaokoland
- Opuwo is a small typical African town, where a range of different people live, from the traditional Himba tribes to Herero, Damara and Owambo cultures
- Along the way stop at various villages to interact and photograph the local people
- Depending on arrival time, enjoy a Himba village visit this afternoon. It is recommended to arrange a local guide to go with you (lodge reception can assist with this)





12 & 13 Kaokoland - Epupa Falls Omarunga Campsite no meals

Opuwo – Epupa Falls 180km - approximately 3 hours

- Today takes you way north to the border with Angola, the beautiful Epupa Falls
- 2 nights, a full day is set aside here to visit some traditional Himba villages (not touristic ... they live there permanently), view the falls and hike along the Kunene River
- Plan a morning visit to 1 or 2 authentic Himba villages as this is when there is the most “activity”



14 Etosha National Park Olifantsrus Campsite no meals

Epupa Falls - Etosha (west) 375km - approximately 5 hours

- Depart this morning after breakfast and backtrack to Opuwo before heading east and then south towards the west side of Etosha
- Enter the park at the Galton Gate
- Arrival here will be in the afternoon and if you wish, join an afternoon game drive with a lodge guide or enjoy the waterhole and hide at leisure to end the day





15 Etosha National Park Okaukuejo Campsite no meals

Etosha (west) – Etosha (south) a full days game drive through the park

- After breakfast, a full morning game drive to Okaukuejo
- Set up camp and then you can return into the park for an afternoon drive or arrange with the lodge for a game drive (optional extra)
- At Okaukuejo, I suggest you pop in at the local shop to purchase some drinks and snacks and most importantly, a map of Etosha which will show you all the waterholes in the park
- Enjoy the waterhole inside the park which is floodlit at night
- Etosha is one of Africa's great game parks. With 114 species of mammal and 340 species of birds you are sure to see a great variety of wildlife on your safari



16 & 17 Etosha National Park Onguma Tamboti Campsite no meals

Etosha (south) – Etosha (east) a full days game drive through the park

- From one side to the other side of the park is a full day game drive as you head slowly east stopping at numerous waterholes along the way
- Take a slow drive in the morning and then enjoy a snack or lunch overlooking one of the waterholes before continuing on through the park to the eastern side
- 1 full day is set aside for game viewing, either all day or alternate with morning and afternoon drives. These are self-drive game drives but you can arrange at the lodge to go with their open safari vehicle and guide (optional extra)





| | | | |
|-----------|------------------------|-----------------------------------|-----------------|
| 18 | Central Namibia | Okonjima Omboroko Campsite | no meals |
|-----------|------------------------|-----------------------------------|-----------------|

Etosha (east) – Okonjima *315km - approximately 4 to 5 hours*

- Head south via Otavi and Otjiwarongo to Okonjima, which is home to the AfriCat Foundation.
- Enjoy some time relaxing or enjoy a walking trail in the area



| | | | |
|-----------|-----------------|------------|--|
| 19 | Windhoek | END | |
|-----------|-----------------|------------|--|

Okonjima – Windhoek *225km - approximately 3 to 4 hours*

- Head back to Windhoek today, where the vehicle is dropped off and your holiday comes to an end
- Transfer to the airport to catch your departure flight. (Keep in mind that you need to be at the airport 2 hours prior and the airport is still a 45 minute to 1 hour drive from town)

What happens next?

- Please have a look at my suggested route, recommended itinerary and the various price options
- Contact me with any questions or requests
- Together we determine a final route, itinerary and price
- Once you are happy with the route and suggested accommodation establishments, I will make the necessary reservations as well as any other ground arrangements
- When all reservations are secured, I will send you an invoice for the 20% deposit to secure the package
- As per our company policy, the balance to be paid no less than 42 days before arrival
- Please read our [Terms & Conditions](#)



Important Information

Travel Insurance

We highly recommend that you arrange your own travel insurance. Not only for your own peace of mind, but also to cover you in the event of possible tour cancellation, emergency evacuation, medical and repatriation expenses as well damage/loss/theft of your personal belongings, camera equipment, money and the like.

Contact Detail

It is important that you give me contact detail of your next of kin or a friend whom I could contact in the event of an emergency. This detail you can give me on the Booking Form that I will forward to you.

Passports/Visas/Vaccinations

- Please note that Africa Tours and Safaris cannot be held responsible for any of the above.
- Passports need to be valid for at least 6 months from date of departure (the date you end your holiday) from Namibia/Botswana etc.
- Traveling with minors - for parents travelling with children under the age of 18 into or out of South Africa, Namibia or Botswana - you need to have the child's full un-abridged birth certificate with you. [See this link for more information.](#)
- Please check on the internet or an Embassy whether you require a VISA to be arranged in advance or whether you can obtain it at point of entry. In some cases, it can take up to 3 months for Visas to be issued so please do not leave this to the last minute. Please note that we cannot arrange Visas from our side as the application requires your signature as well as the actual passport to be endorsed.
- The same applies to any possible vaccinations. Your doctor should be able to advise you.

Some Tips and Requests

- Please ensure your consultant has your phone number, preferably a local cellular number
- Satellite phones are available for rental so if required, please request one when making your reservation
- Bag types and sizes for local flights: bags to be soft type as luggage bays of small aircraft cannot hold large hard shell bags. If bag sizes and weights do not comply, extra charges could incur
- Luggage weight limitation is vital for your own safety. If luggage weight exceeds limits, some luggage will be unpacked and extra costs could incur
- Stick to speed limits as speeding is not only breaking the law, but also negates/cancels any insurance claims and should there be an accident, you will be liable for 100% of repair costs