



NAMIBIA
TOURS & SAFARIS

19-DAY
ULTIMATE NAMIBIA PRIVATE
GUIDED SAFARI
STANDARD ACCOMMODATION



Overview

Number of days:	19 days / 18 nights
Accommodation:	standard / mid-market
Dates:	flexible
Option:	private guided
Prepared by:	NTS

The best of Namibia in a 19-Day Ultimate Namibia Safari starting and ending in Windhoek that includes the highlights of Namibia: The Kalahari; Fish River Canyon; Luderitz; Sossusvlei, with its great sand sea; the seaside towns of Swakopmund and the Skeleton Coast; Damaraland, with its fascinating rock formations, Bushman rock art and desert-adapted wildlife; Kaokoland, the last frontier of true wilderness and the realm of the nomadic Himba people; and Etosha National Park - one of Africa's great game parks.

Itinerary at a Glance

Days	Destination	Lodge	Includes
1	Windhoek	Am Weinberg Boutique Hotel	BB
2	Kalahari	Camelthorn Lodge	DBB
3	Fish River Canyon	Canyon Roadhouse	DBB
4 & 5	Lüderitz	Alte Villa Boutique	BB
6 & 7	Sossusvlei	Desert Homestead Lodge	DBB
8 & 9	Swakopmund / Walvis Bay	Swakopmund Luxury Suites	BB
10	Damaraland	Camp Kipwe	DBB
11	Kaokoland - Opuwo	Opuwo Country Hotel	DBB
12 & 13	Kaokoland – Epupa Falls	Epupa Camp	DBB
14	Etosha National Park	Hobatere Lodge	DBB
15	Etosha National Park	Etosha Village	DBB
16 & 17	Etosha National Park	Mushara Bush Camp	DBB
18	Central - AfriCat Foundation	Okonjima Plains Camp	DBB + 2 activities
19	Windhoek	END	

Legend:

BB: bed & breakfast DBB: dinner, bed & breakfast FB: all meals FI: fully inclusive of meals and activities

Click on the lodge name and it will direct you to our website where you can read more about it.

Accommodation subject to availability - with minimum extra cost, up-grade any accommodation - contact us for suggestions.



Tel +264 64 406 038 | enquiries@namibia-tours-safaris.com | www.namibia-tours-safaris.com

Page 3 of 12



Includes

- Accommodation as indicated - can change depending on availability and request at time of booking
- Meals as indicated
- Car hire as per picture below for 2 & 4 pax - for 6 pax the vehicle is slightly larger
- All vehicle costs including fuel
- All park entry fees
- Guide and guide costs
- Water in the vehicle at all times
- Activities as shown in the itinerary ... all activities that can be done with NTS guide and vehicle are included
- Tour file with detailed itinerary, map with route descriptions, vouchers etc.
- 24 hour personal and friendly support
- Fast and efficient response to service providers

Vehicle Hire as Included

Suggested vehicle type:

4X4 Safari Converted Vehicle



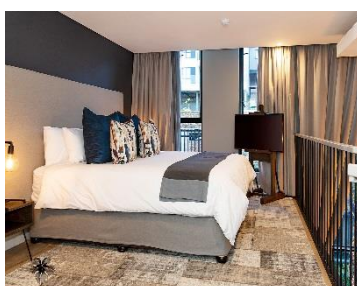
Excludes

- Items of a personal nature
- Optional extra activities
- International flights
- Holiday or personal insurance
- Staff gratuities
- Visas and visa applications

Itinerary and Accommodation

1 Windhoek Am Weinberg Boutique Hotel BB – Courtyard Fountain Level

- You will be met by your guide on arrival in Windhoek and handed your travel documents
- City tour of Windhoek (if time permits)
- The remainder of the day can be spent relaxing at your own leisure
- For dinner tonight, you can head into town for a bite to eat at one of Windhoek's well known restaurants



2 Kalahari Camelthorn Lodge DBB

Windhoek – Kalahari 245km - approximately 3 to 4 hours

- After breakfast, you can still pop into town for anything you might need and then depart heading south from Windhoek to the red sand dunes of the Kalahari
- Spend the remainder of the day at leisure in this beautiful setting
- Optional activities here include game and nature drives as well as a Bushman experience





3	Fish River Canyon	Canyon Roadhouse	DBB
----------	--------------------------	-------------------------	------------

Kalahari – Fish River Canyon 440km - approximately 7 to 8 hours

- Head south via Mariental and Keetmanshoop to the Karas region, the Fish River Canyon area
- Detour en-route to Giant's Playground and Quiver Tree Forest, a beautiful site where large aloes grow between rocks
- Enjoy the view from the lodge at sunset to end the day



4 & 5	Lüderitz	Alte Villa Boutique Guesthouse	BB
------------------	-----------------	---------------------------------------	-----------

Fish River Canyon – Lüderitz 385km - approximately 5 to 6 hours

- Enjoy a morning canyon view before heading west through harsh but beautiful terrain which changes to wide open desert plains as you make your way to the coast
- Your drive will take you via Aus, where you may be lucky to view the wild desert horses in the area
- 1 full day is set aside to enjoy the historic town of Lüderitz and visit the amazing Kolmanskop Ghost Town with your guide
- Lunches and dinners can be enjoyed at any of the local restaurants in town





6 & 7 Namib Desert

Desert Homestead Lodge

DBB

Lüderitz – Sossusvlei

505km - approximately 7 to 8 hours

- After breakfast, you will depart to the "sea of sand" backtracking to Aus and then heading north via Helmeringhausen
- Wake up early for breakfast (Day 7) and then head to the entrance to Sossusvlei, the Sesriem Gate
- Spend the whole day in the beautiful Sossusvlei area, exploring the highlights: Sossusvlei, Dead Vlei, Dune 45, Big Daddy, Elim Dune and the Sesriem Canyon
- Return to the lodge for lunch or arrange a lunch pack to enjoy in the dunes and return late afternoon for a well-earned rest
- Optional extra activities: Hot air balloon safari, Nature drives



8 & 9 Swakopmund

Swakopmund Luxury Suites

BB - Luxury Room

Sossusvlei – Swakopmund

350km - approximately 5 to 6 hours

- Depart after breakfast and head north to Solitaire, then west crossing the Tropic of Capricorn, through the Gaub and Kuiseb Canyons via the Namib Gravel Plains to the coast
- Either via Walvis Bay to Swakopmund, or (recommended) detour via Ganab to the Welwitschia Plains and Moon Landscape
- The Namibian coastline is generally known as The Skeleton Coast due to the barren areas, ship wrecks and, in days gone by, whale skeletons left on the beach
- 1 full day is set aside for this lovely area where Swakopmund and Walvis Bay offer a wide range of activities such as: Dolphin cruise, Sandwich Harbour excursion (a real Skeleton Coast experience), Dune quad biking, Sand boarding, Sea kayaking, Lots more...
- Lunches and dinners can be enjoyed at a café or restaurant overlooking the sea





10	Damaraland	Camp Kipwe	DBB
----	------------	------------	-----

Swakopmund – Damaraland 445km - approximately 7 to 8 hours

- Head north along the Skeleton Coast, via Henties Bay to visit the Cape Cross seal colony. Along the way, stop at the Lichen Fields as well as the ship wreck between the colourful small town of Wlotskasbaken and Henties Bay
- Backtrack to Henties Bay and head inland through wide open plains to Uis, then north to the Twyfelfontein area
- Visit to Namibia's Open Air Museum, the Twyfelfontein Rock Engravings as well as the interesting Organ Pipes rock formations and Burnt Mountain
- Visit the Damara Living Museum for a hint of culture



11	Kaokoland - Opuwo	Opuwo Country Hotel	DBB - Standard Room
----	-------------------	---------------------	---------------------

Damaraland – Opuwo 340km - approximately 5 to 6 hours

- Depart the Twyfelfontein area and head north via Palmwag, crossing the Hoanib River, up and over Joubert Pass to Opuwo, the centre of Kaokoland
- Opuwo is a small typical African town, where a range of different people live, from the traditional Himba tribes to Herero, Damara and Owambo cultures
- Along the way stop at various villages to interact and photograph the local people
- Depending on arrival time, enjoy a Himba village visit this afternoon with your guide



**12 & 13 Kaokoland - Epupa Falls****Epupa Camp****DBB***Opuwo – Epupa Falls**180km - approximately 3 hours*

- Today takes you way north to the border with Angola, the beautiful Epupa Falls
- 2 nights, a full day is set aside here to visit some authentic traditional Himba villages, view the falls and hike along the Kunene River
- Plan a morning visit to 1 or 2 authentic Himba villages as this is when there is the most activity

**14 Etosha National Park****Hobatere Lodge****DBB***Epupa Falls - Etosha (west)**375km - approximately 5 hours*

- Depart this morning after breakfast and backtrack to Opuwo before heading east and then south towards the west side of Etosha
- Arrival here will be in the afternoon and if you wish, join an afternoon game drive with a lodge guide or enjoy the waterhole and hide at leisure to end the day





15	Etosha National Park	Etosha Village	DBB
-----------	-----------------------------	-----------------------	------------

Etosha (west) – Etosha (south) a full days game drive through the park

- After breakfast, enter the park for a full morning game drive to Okaukuejo and exit Etosha at the southern gate, Anderson gate
- On entry, pay your entrance fee (included) and I suggest you pop in at the local shop to purchase some drinks and snacks and most importantly, a map of Etosha which will show you all the waterholes along the way
- Return into Etosha for an afternoon drive with your guide
- Etosha is one of Africa's great game parks. With 114 species of mammal and 340 species of birds you are sure to see a great variety of wildlife on your safari



16 & 17	Etosha National Park	Mushara Bush Camp	DBB
--------------------	-----------------------------	--------------------------	------------

Etosha (south) – Etosha (east) a full days game drive through the park

- From one side to the other side of the park is a full day game drive as you head slowly east stopping at numerous waterholes along the way
- Take a slow drive in the morning and then enjoy a snack or lunch overlooking one of the waterholes before continuing on through the park to the eastern side
- 1 full day is set aside for game viewing, either all day or alternate with morning and afternoon drives





18	Central Namibia	Okonjima Plains Camp		DBB + 2 activities - View Room
-----------	------------------------	-----------------------------	--	---------------------------------------

Etosha (east) – Okonjima 315km - approximately 4 to 5 hours

- Head south via Otavi and Otjiwarongo to Okonjima, which is home to the AfriCat Foundation. Aim to arrive here by 14h00 latest in order to enjoy the afternoon tea/coffee and cakes before heading off on your afternoon excursion



19	Windhoek	END		
-----------	-----------------	------------	--	--

Okonjima – Windhoek 225km - approximately 3 to 4 hours

- Early morning rise for a quick snack before joining the morning activity, which will be to visit the AfriCat Foundation or for a drive in the animal enclosure, which is more a game reserve
- Back to the lodge for a hearty Namibian breakfast before departure
- Head back to Windhoek today, where your guide will drop you at the airport in time for your departure flight (Keep in mind that you need to be at the airport 2 hours prior and the airport is still a 45 minute to 1 hour drive from town)
- End of services

What happens next?

- Please have a look at my suggested route, recommended itinerary and the various price options
- Contact me with any questions or requests
- Together we determine a final route, itinerary and price
- Once you are happy with the route and suggested accommodation establishments, I will make the necessary reservations as well as any other ground arrangements
- When all reservations are secured, I will send you an invoice for the 20% deposit to secure the package
- As per our company policy, the balance to be paid no less than 42 days before arrival
- Please read our [Terms & Conditions](#)
-



Important Information

Travel Insurance

We highly recommend that you arrange your own travel insurance. Not only for your own peace of mind, but also to cover you in the event of possible tour cancellation, emergency evacuation, medical and repatriation expenses as well damage/loss/theft of your personal belongings, camera equipment, money and the like.

Contact Detail

It is important that you give me contact detail of your next of kin or a friend whom I could contact in the event of an emergency. This detail you can give me on the Booking Form that I will forward to you.

Passports/Visas/Vaccinations

- Please note that Africa Tours and Safaris cannot be held responsible for any of the above.
- Passports need to be valid for at least 6 months from date of departure (the date you end your holiday) from Namibia/Botswana etc.
- Traveling with minors - for parents travelling with children under the age of 18 into or out of South Africa, Namibia or Botswana - you need to have the child's full un-abridged birth certificate with you. [See this link for more information.](#)
- Please check on the internet or an Embassy whether you require a VISA to be arranged in advance or whether you can obtain it at point of entry. In some cases, it can take up to 3 months for Visas to be issued so please do not leave this to the last minute. Please note that we cannot arrange Visas from our side as the application requires your signature as well as the actual passport to be endorsed.
- The same applies to any possible vaccinations. Your doctor should be able to advise you.

Some Tips and Requests

- Please ensure your consultant has your phone number, preferably a local cellular number
- Satellite phones are available for rental so if required, please request one when making your reservation
- Bag types and sizes for local flights: bags to be soft type as luggage bays of small aircraft cannot hold large hard shell bags. If bag sizes and weights do not comply, extra charges could incur
- Luggage weight limitation is vital for your own safety. If luggage weight exceeds limits, some luggage will be unpacked and extra costs could incur
- Stick to speed limits as speeding is not only breaking the law, but also negates/cancels any insurance claims and should there be an accident, you will be liable for 100% of repair costs