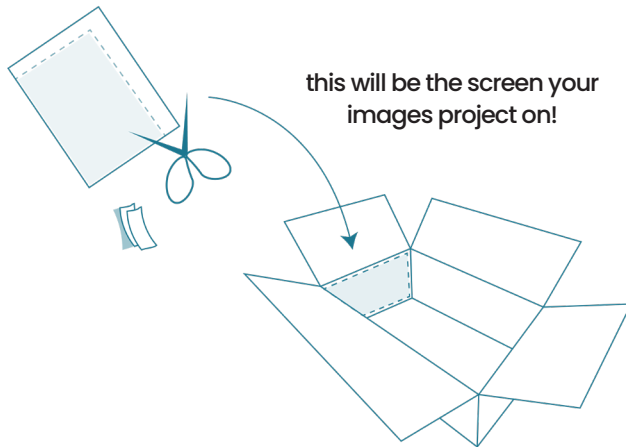
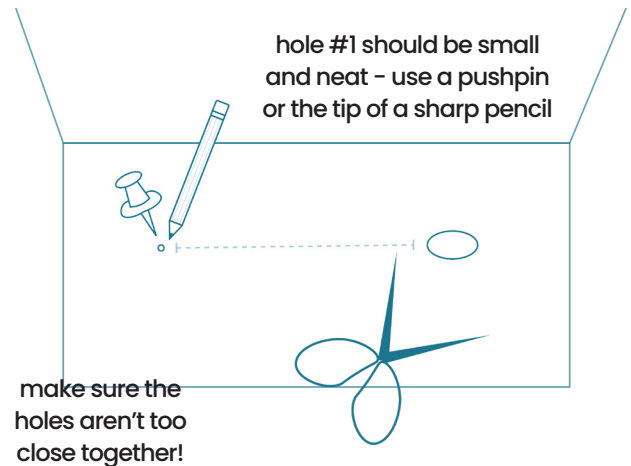


how to: make a pinhole camera

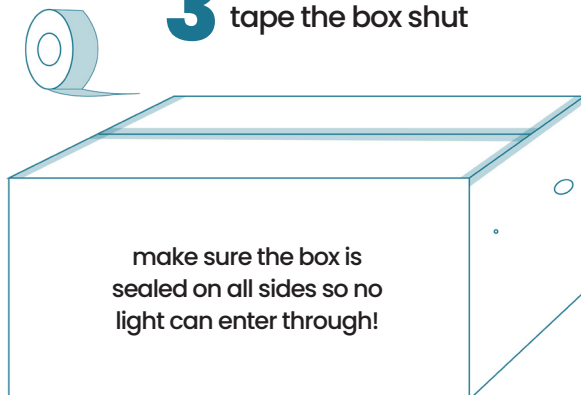
- 1** cut the piece of paper to fit one side of the box and tape it to that side



- 2** poke two holes on the side of the box directly across from the screen



- 3** tape the box shut



hole #2 should be bigger- use a pair of scissors to poke a hole large enough to be able to see through!

- 4** time to test out your pinhole camera!

- 5** stand in a dark room with your back to a window... What do you see?

make sure to NOT block the small hole when looking through the camera!

