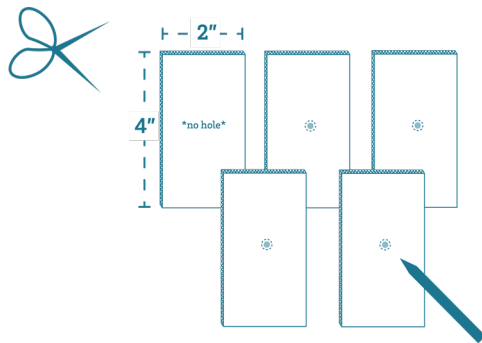
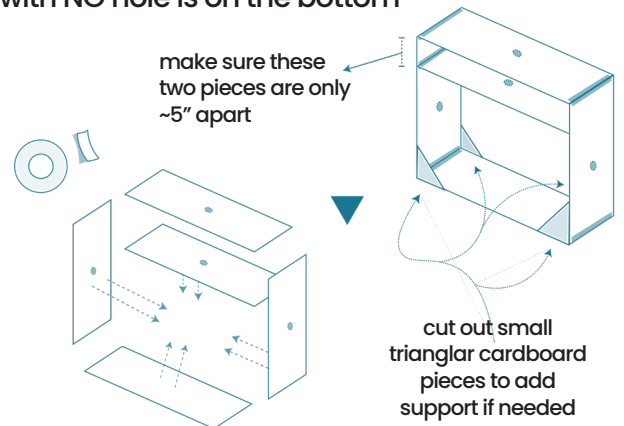


how to: build a cardboard automata

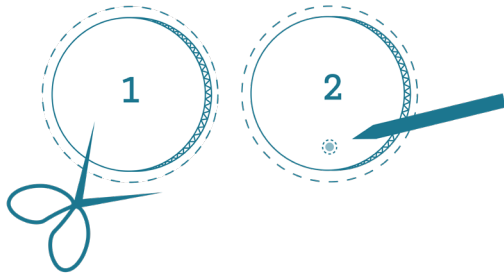
- 1** cut out five identical cardboard rectangles
- 2** poke a hole in the middle of the FOUR of the rectangles



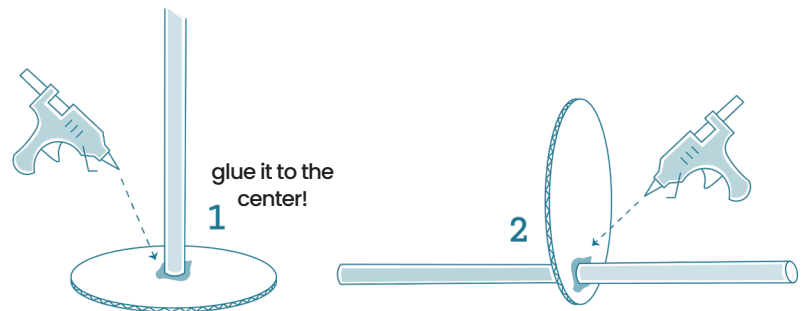
- 3** tape the pieces together into a box, as show below, and make sure the side with NO hole is on the bottom



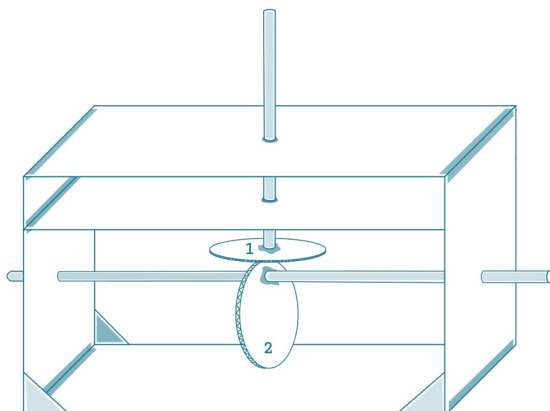
- 4** cut out two cardboard circles and make a hole off-center on ONE of the circles



- 5** glue the wooden dowels to the circles as shown below



- 6** assemble all the pieces together as shown below!



- 7** ...but that's not all...
make a character to go on top!

