

# PLAN FOR WHEN A TEAM MEMBER, STUDENT OR , VISITOR BECOMES SICK

## ISOLATION ROOM

All campuses must have a designated isolation room. This room will be used to isolate anyone who is exhibiting symptoms related to COVID-19 and should be cleaned after every use.

## SYMPTOMS

If a person on campus is exhibiting the symptoms below, then a face mask should be provided to them and safe transport should be arranged. The isolation room should be used as a triage location and a waiting room for any students waiting for safe transport. Actively encourage employees and students who are sick or who have recently had [close contact](#) with a person with COVID-19 to stay home. Sick employees and students can stay at home without fear of reprisal, and ensure employees, students, and students' families are aware of these policies. Monitor employees and students throughout the day for signs of illness; send home students and employees with a fever of 100 degrees (per San Diego County public health order) or higher, cough, or other [COVID-19 symptoms](#). Students with COVID-19 or symptoms of COVID-19 will not be penalized for missing class.

*Fever and cough have been highlighted because they warrant immediate isolation and alert us to the highest possibility of spreading the virus. The rest of the symptoms require at least an evaluation and temporary isolation.*

- Fever (100 F or more)
- New cough , nasal congestion, or runny nose
- Chills
- Shortness of breath or difficulty breathing (new)
- New muscle or body aches, or fatigue
- Headache (if abnormal for you)
- New loss of taste or smell
- Sore throat
- Nausea, vomiting, abdominal pain
- Diarrhea
- New rash

*Do not answer 'yes' if symptoms are a result of chronic condition(s) or frequent condition(s) routinely managed.*

**For serious injury or illness, call 911 immediately.** Seek medical attention if COVID-19 symptoms become severe, including persistent pain or pressure in the chest, confusion, or bluish lips or face. Updates and further details are available on [CDC's webpage](#).

## PRIVACY

If a student or employee has symptoms and needs to be isolated, take steps to protect their privacy. Ensure practical steps are taken to prevent the sharing of medical information about students or employees. Prevent discrimination against students who (or whose families) were or are diagnosed with COVID-19 or who are perceived to be a COVID-19 risk.

## CLEANING

Areas used by any sick person must be closed off and cleaned before they can be used again. Please notify your site facilities and security team to assist with temporary closures and cleaning procedures. They will utilize proper disinfectants and PPE to clean the infected area.

## HOME ISOLATION

Advise sick employees and students not to return until they have met CDC criteria to discontinue home isolation, including 24 hours without fever (no meds), and symptoms are improving, AND at least 10 days from symptom onset or test date.

## REPORTING

Please notify the Classical Academies Health and Safety Team immediately if you are aware of any positive COVID-19 cases. If a student is exhibiting symptoms of COVID-19, employees should communicate with the parent/caregiver and refer to the student's health history form and/or emergency card. The Classical Academies Health and Safety Team will reach out to local health officials, employees and all families while maintaining confidentiality, as required by state and federal laws. The Health and Safety Team/COVID-19 Liaison will report information on positive cases to the Public Health Services Epidemiology Department at: 619-692-8499.

**What measures should be taken when a student, teacher, or employee has symptoms, or is in contact of someone infected, or is diagnosed with COVID-19?**

## Fever / COVID-19 Symptom Decision Tree

(Version: 07/31/2020c)



**At school, student or staff member develops any one of the following signs or symptoms:**

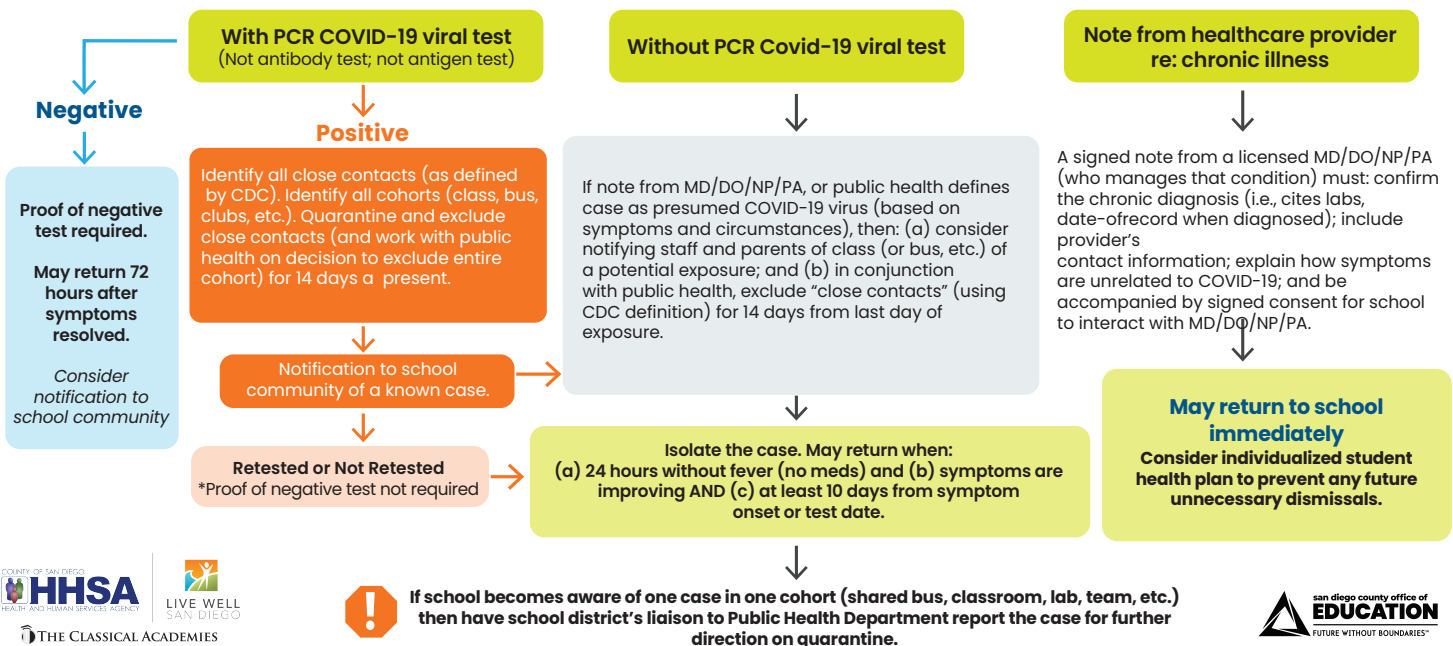
- Fever with or without chills/rigors (fever defined as  $T > 100.0$  that does not resolve within 30 min. without medication);
- Cough\* • Shortness of breath • Nasal congestion/rhinorrhea (runny nose)\* • Sore throat
- Nausea, vomiting, or diarrhea\* • Fatigue\* • New loss of taste/smell • Headache\*
- Muscle or body aches\* • Poor feeding or poor appetite\*

\* Disregard this symptom if school personnel already aware of a chronic, pre-existing condition that causes the symptom. The nature of the presenting symptom (e.g., duration, intensity) must be consistent with the underlying chronic condition.

**ACTION:** Apply appropriate PPE; isolate student/staff member until sent home; recommend they reach health care provider for instructions. Note: Other infections can cause same symptoms (e.g., flu, strep, etc.) but these do not rule out COVID-19 as co-occurring



### STUDENT / STAFF TO STAY HOME UNTIL...



(†) A contact is defined as a person who is <6 feet from a case for >15 minutes. In some school situations, it may be difficult to determine whether individuals have met this criteria and an entire cohort, classroom, or other group may need to be considered exposed, particularly if people have spent time together indoors.

(††) A cohort is a stable group with fixed membership that stays together for all courses and activities (e.g., lunch, recess, etc.) and avoids contact with other persons or cohorts.

County provided training on decision tree: [training video](#)

# GUIDANCE FOR SCHOOL CLOSURE

## What are the criteria for closing a school?

Individual school closure is recommended based on the number of cases, the percentage of the teacher/students/employees that are positive for COVID-19, and following consultation with the Local Health Officer. Individual school closure may be appropriate when there are multiple cases in multiple cohorts at a school or when at least 5 percent of the total number of teachers/student/employees test positive within a 14-day period, depending on the size and physical layout of the school.

The Local Health Officer may also determine school closure is warranted for other reasons, including results from public health investigation or other local epidemiological data.

## If a school is closed for in-person learning, when may it reopen?

Schools may typically reopen after 14 days and the following have occurred:

- Cleaning and disinfection
- Public health investigation
- Consultation with the local public health department

## What are the criteria for closing a school district?

A superintendent should close a school district if 25% or more of schools in a district have closed due to COVID-19 within 14 days, and in consultation with the local public health department.

## If a school district is closed, when may it reopen?

Districts may typically reopen after 14 days, in consultation with the local public health department.

## MONITORING

The Health and Safety team will monitor State and Local health announcements and provide updates to campuses as needed. The Health and Safety team will check state and local orders and health department notices daily about transmission in the area or closures and adjust operations accordingly.

## INVESTIGATING

If there is an outbreak or spread on campus, the Health and Safety Team will investigate the COVID-19 illness and exposures and determine if any work-related factors could have contributed to risk of infection. Update protocols as needed to prevent further cases.

# CORONAVIRUS

# PREVENTION



**WEAR MASK**



**PRACTICE  
SOCIAL DISTANCE**



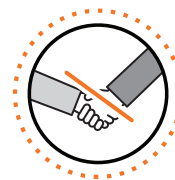
**WASH HANDS  
WITH SOAP**



**AVOID CONTACT**



**CLEAN OBJECTS  
& SURFACES**



**AVOID  
HANDSHAKE**



**AVOID CROWDS**

**If you have any questions or something to report, email [healthandsafety@classicalacademy.com](mailto:healthandsafety@classicalacademy.com)**