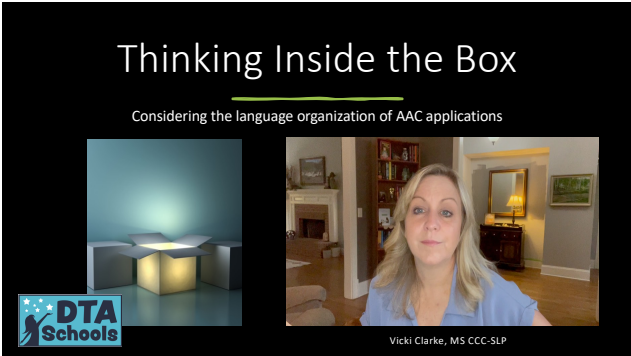


# Thinking Inside the Box: AAC Language Organization

## Worksheet and Guiding Questions



1

---

---

---

---

---

---

---



2

---

---

---

---

---

---

---

What AAC applications do your students use? Which ones are you familiar with?



3

---

---

---

---

---

---


---

## Language Organization

How we find the words in our robust, dynamic display communication system?



LINGUISTIC BASED NAVIGATION



OPERATIONALLY BASED



ENVIRONMENTALLY BASED NAVIGATION



PRAGMATICALLY (FUNCTIONALLY) BASED NAVIGATION

4

---

---

---

---


---

---

---

---

## Pragmatically Based



- Phrase based on communication function- "I want..." "I need..." "Something's wrong..." or "I'm telling you something..."
- Often fringe words are accessed through these starter phrases, especially at emergent levels
- Based on typical language development models:
- Function → Form

5

---

---

---

---


---

---

---

---

## Let's Take a Look: SimPODD



6

---

---

---

---

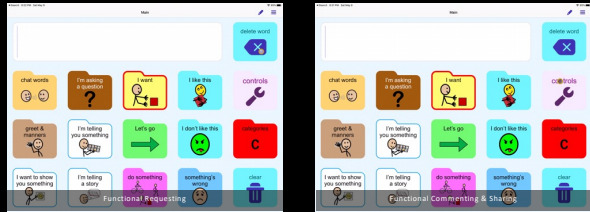
---

---

---

---

## Emergent Level AAC Apps: SimPODD 15



7

---

---

---

---

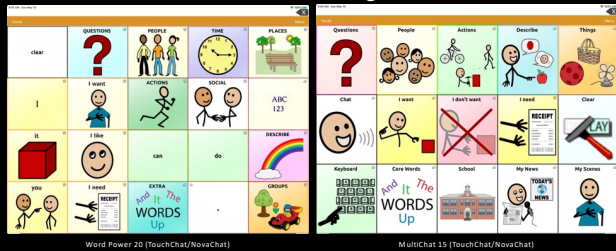
---

---

---

---

## Emergent Level AAC Apps: Requesting & Social Commenting



8

---

---

---

---

---

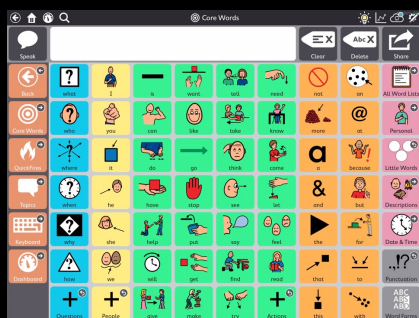
---

---

---

## Social & Quickfire Pages

Snap + Core First: Quickfires



9

---

---

---

---

---

---

---

---

What advantages do you see in using a social or pragmatic focused set of pages on your AAC system?

---

---

---

---

---

---

---

Decision Factors

Best learned through functional repetition and practice

Functions best when the individual understands reciprocal social interaction

Cognitive load is complicated when the individual has receptive language or auditory processing challenges.

10

Linguistic Based

- Semantic Categories (Nouns, Verbs, Questions, People & Adjectives)
- Multi-Meaning Iconic Encoding- Word Associations & Syntactic Markers
- Syntax (word order) and morphology (word ending) supports

---

---

---

---

---

---

---

11

Let's Take a Look: TD Snap

- CATEGORICAL WORD LISTS
- PERSONAL WORD LISTS
- STATIC CORE WORD DISPLAYS
- COLOR CODING & LEFT → RIGHT

---

---

---

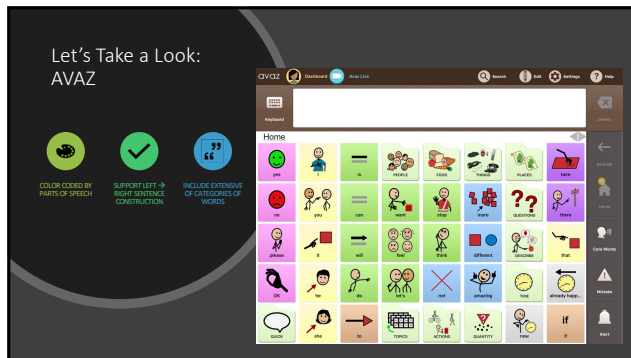
---

---

---

---

12



13

---

---

---

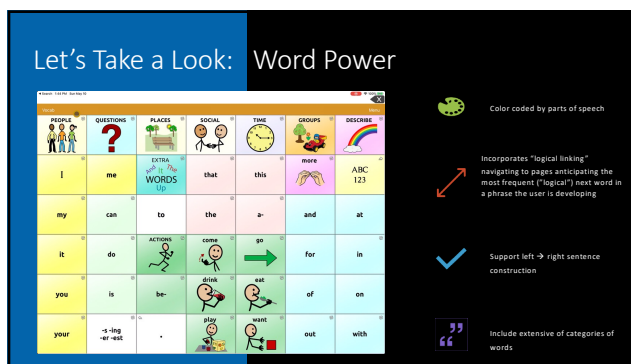
---

---

---

---

---



14

---

---

---

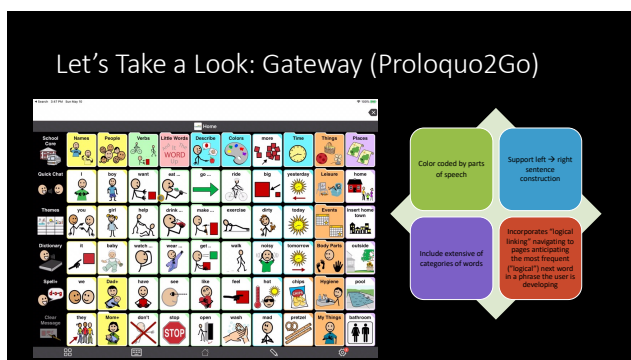
---

---

---

---

---



15

---

---

---

---

---

---

---

---

Would a linguistic based set of pages be beneficial to your student? Why or why not?

---

---

---

---

---

---

---

---

Decision Factors

✓

Flexible Core words that have high frequency

🔗

Familiar for neurotypical language learners

🗨️

Single words can be combined creatively to express a variety of messages

📖

Categories are easy for partners to recognize & model

💡

Logical linking may cause the student to view the core word as a navigation button rather than comprehending the meaning of the single core word.

16

Let's Take a Look: Unity/Unidad

Minipeak is the system developed by Bruce Baker, based on the idea of semantic compaction (multi-meaning icons)

All semantic categories (nouns) are accessed first by selecting an associated "core" word.

Heavily based based in linguistic theory: how words are associated with each other, how syntax is marked and represented in the system

Includes categorical organization as well

17

---

---

---

---

---

---

---

---

Decision Factors:

💡

One symbol can lead to many, many words and categories

🔍

If you learn to navigate the device by visual regard, relies on experience with the item represented.

⚡

Single route to each word to decrease confusion

👤

Can be slower acquisition of individual words but once mastered, follows a developmental sequence of learning single words then gradually increasing sentence complexity

18

---

---

---

---

---

---

---

---

## Operational Based



- Semantic Categories (Nouns, Verbs, Questions, People & Adjectives)
- Multi-Meaning Iconic Encoding-Word Associations & Syntactic Markers
- Syntax (word order) and morphology (word ending) supports




---

---

---

---

---

---

---

19

## Let's Take a Look: LAMP




---

---

---

---

---

---

---

20

## LAMP: Language Acquisition Through Motor Planning

- Word based program
- One motor plan per word
- No motor plan changes as language develops
- No more than 3 touches required to get to any word
- No carrier phrases
- Learning occurs through a focus on the motor sequences
- Based on the Unity program so includes linguistic supports
- All "fringe" words are access through a core word symbol
- Large number of words per page (84) but these are easy to hide/show

---

---

---

---

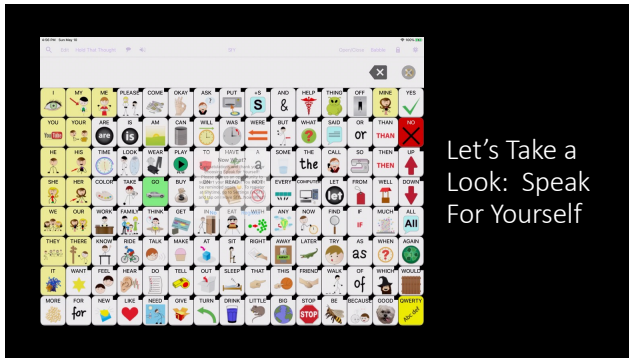
---

---

---

21





22

---

---

---

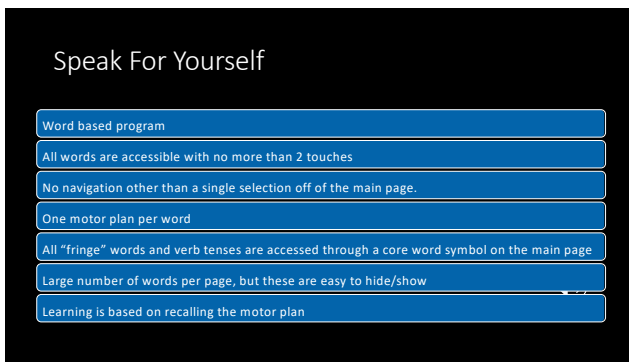
---

---

---

---

---



23

---

---

---

---

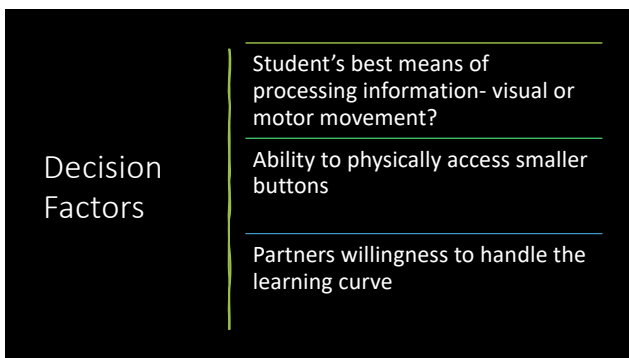
---

---

---

---

When would you consider a system based on motor planning?



24

---

---

---

---

---

---

---

---



## Environment Based



- Prestored Phrases and words that are chosen to match regularly occurring activities or places
- Not isolated activity boards
- Highly customized to the individual




---

---

---

---

---

---

---

25

## Let's Take a Look: TD Snap

- Topics are commonly occurring activities and environments the user experiences
- Each topic page has organized questions, statements, comments (positive /negative)
- Topic based word lists link off of each topic page




---

---

---

---

---

---

---

26

## DIY & Starter Topics in Apps

Gateway in Proloquo2Go




---

---

---

---

---

---

---

27



28

---

---

---

---

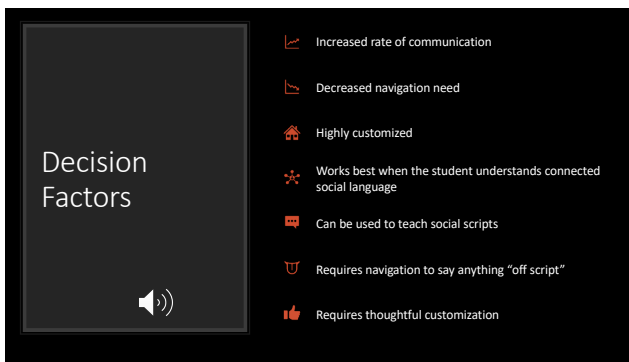
---

---

---

---

What do you see as the main advantage to an environmentally based set of pages on your AAC device?



29

---

---

---

---

---

---

---

---



30

---

---

---

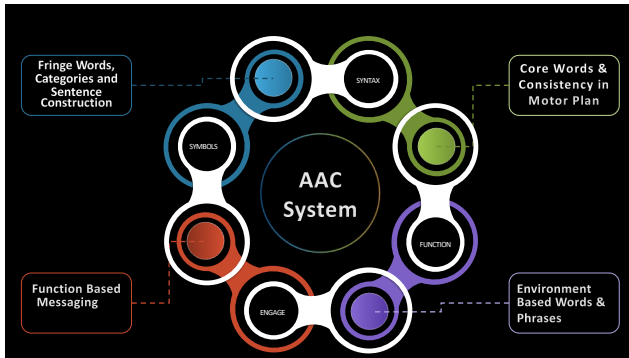
---

---

---

---

---



31

---

---

---

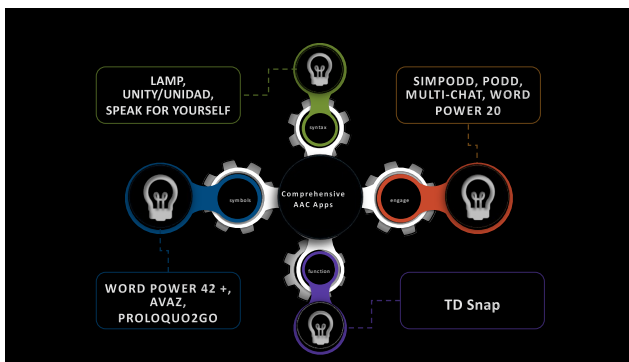
---

---

---

---

---



32

---

---

---

---

---

---

---

---

### Evaluate Your AAC System

- **Fully Developed**-minimal need to set up, create pages, customize words/messages
- **Moderate Customization**-basic template exists but most pages, messages need customization
- **Do-It-Yourself**-can create from scratch with the programming components
- **Hybrid Feature**- exists but is integrated with other types of words/messages (ex: PODD includes both categories of words and phrases, core is included as a part of phrases only)
- **Location**- It is on a separate page? Is it named something specific (ex: category of words are "Word List" on Snap + Core)
- **Not a feature**

33

---

---

---

---

---

---

---

---