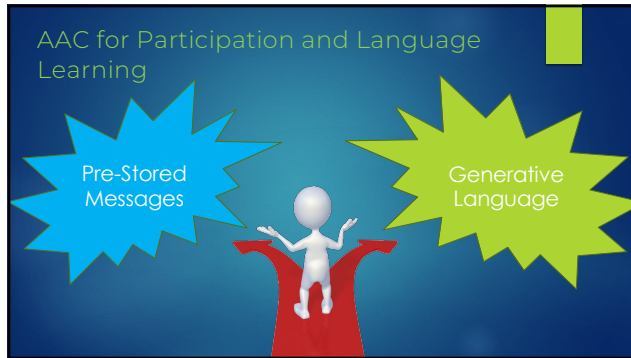


# AAC for Participation & Learning Language

## Prestored Messages vs Generative Language

### Worksheet and Guiding Questions



1

---

---

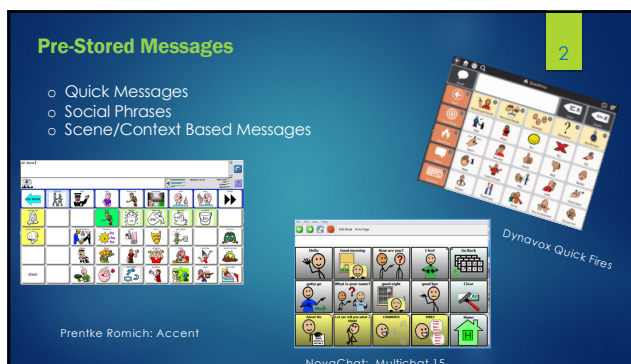
---

---

---

---

---



2

---

---

---

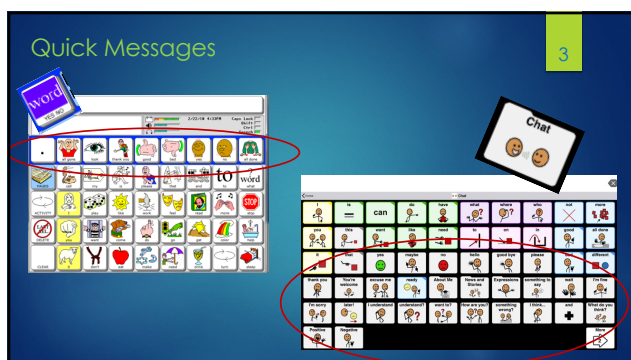
---

---

---

---

When your student delivers a package to the front office, what type of quick social messages does she need to have available on her AAC system?



3

---

---

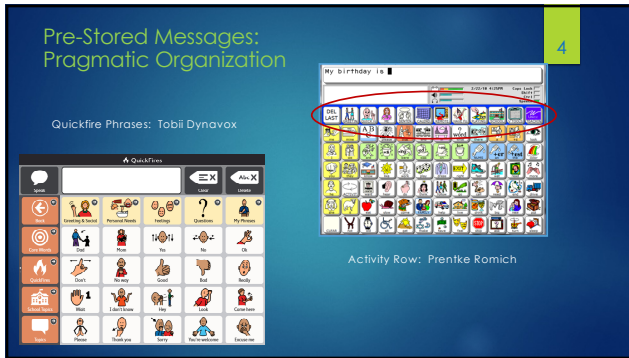
---

---

---

---

---



4

---

---

---

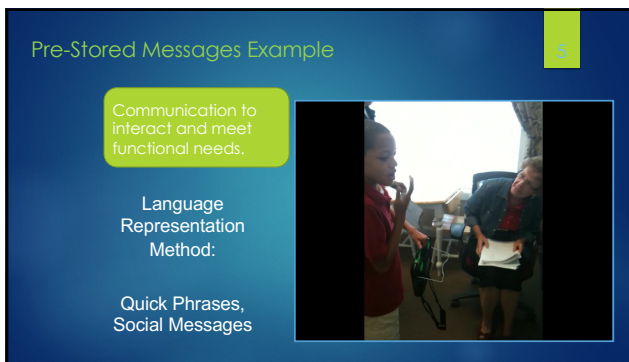
---

---

---

---

---



5

---

---

---

---

---

---

---

---



6

---

---

---

---

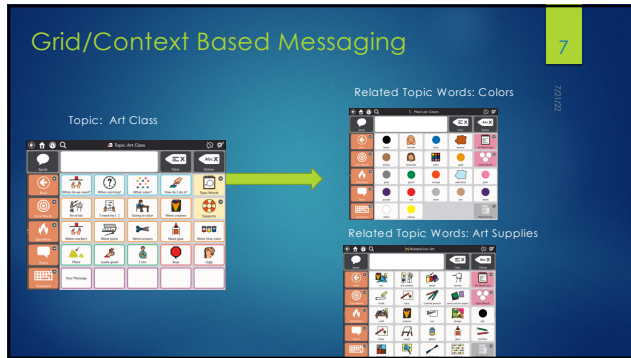
---

---

---

---

Do you have a student who might benefit from topic or context based AAC pages? If so, describe them here.



7

---

---

---

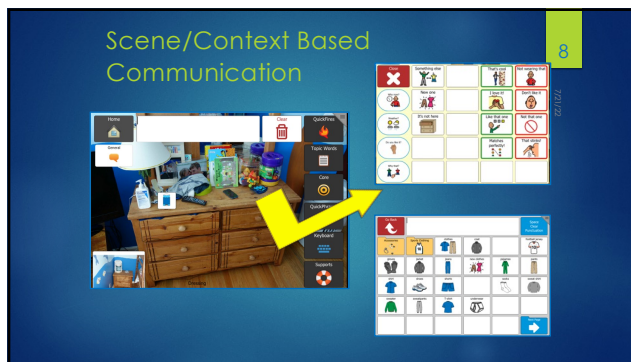
---

---

---

---

---



8

---

---

---

---

---

---

---

---



9

---

---

---

---

---

---

---

---

Look on your communication system, can you find core words? A word list of categories? How about a keyboard?



10

---

---

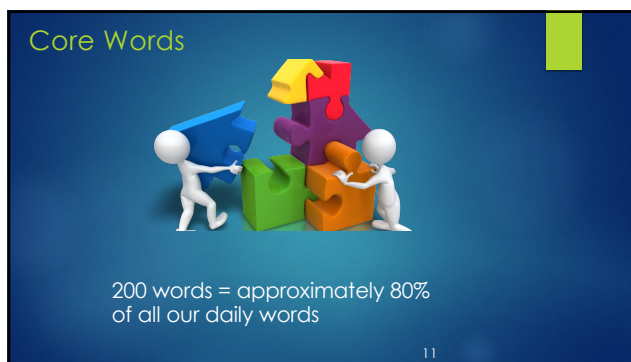
---

---

---

---

---



11

---

---

---

---

---

---

---



12

---

---

---

---

---

---

---

Make a short list of the personally meaningful words you would make sure to have on your own AAC system.



13

---

---

---

---

---

---

---



14

---

---

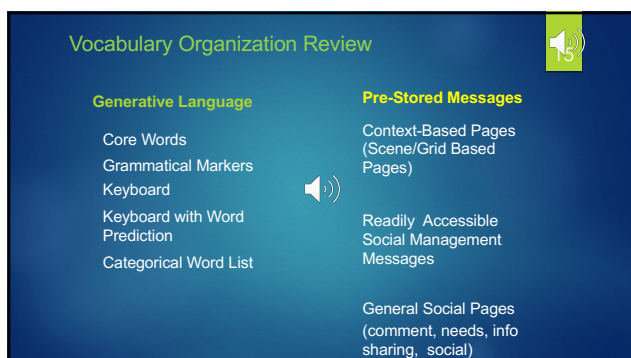
---

---

---

---

---



15

---

---

---

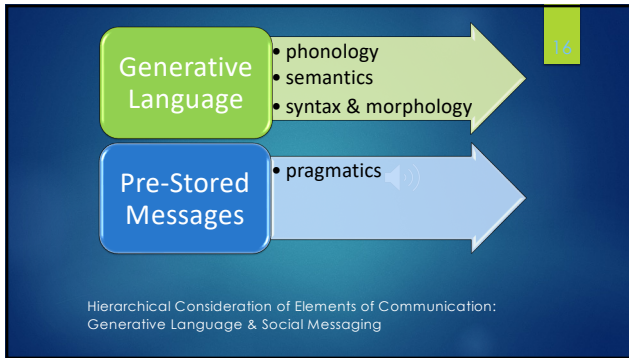
---

---

---

---






---

---

---

---

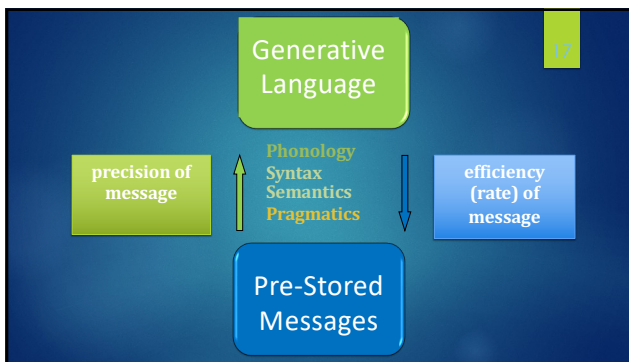
---

---

---

16

Consider what type of messaging you need in these situations:



cafeteria line:

---

---

talking to your best friend:

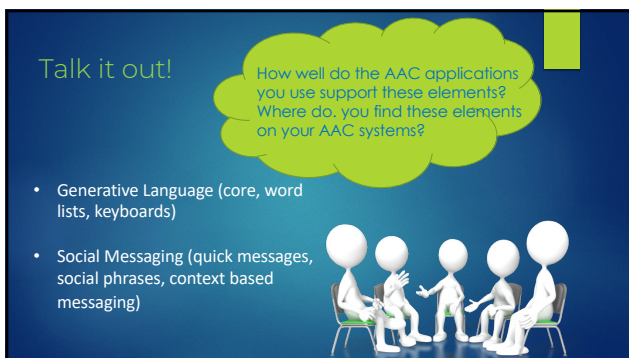
---

---

---

---

17




---

---

---

---

---

---

---

18



19

---

---

---

---

---

---

---