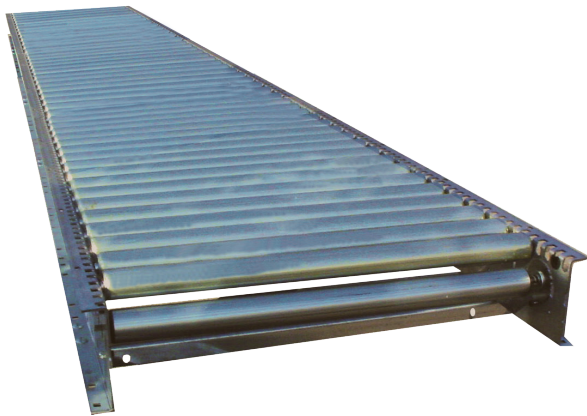


# Adjustable Pressure Live Roller Conveyor (AP)



Wynright's quiet running, versatile and economical live roller conveyor components are important elements of conveyor systems that require side loading and smooth integration of a countless number of processed materials from small to large sizes in weights up to 100 pounds per foot.

Wynright's Adjustable Pressure Live Roller Conveyors are motor driven with adjustability built-in to adapt to minimum pressure accumulation smoothly and quietly. The pressure roller assemblies are equipped with an adjustable cam. The height of the pressure roller is adjusted by rotating the cam. The cam is stepped so that as it rotates the pressure roller moves upward or downward.

Wynright's pre-engineered components are economical, versatile, flexible, durable, and are easy to install. They feature galvanized rollers, point-by-point cam adjustable pressure rollers, specially designed and easy to replace belts, and are easy to maintain for long life.



### Mechanical Characteristics

#### Bed Section

6" Deep x 1-3/8" Flange x 10 Gauge frame in 12" increments between 12" and 144".

#### Galvanized Rollers

##### Carrying:

1-7/8" Diameter, 16 Gauge, with 7/16" hex axle.

##### Pressure:

1-7/8" Diameter, 16 Gauge, with 5/16" hex axle.

#### Drives

6", 8", or 10" Center Drives and 6" or 8" End Drives. Lagged pulley with automatic spring take-up on center drive. 8" wide Type 6 Friction x Friction belting.

3/4 HP to 5 HP 230V-460V/ 3-Phase/60Hz. "C" face TEFC motor with reducer. Speed range is 60-320 FPM.

#### Terminal End

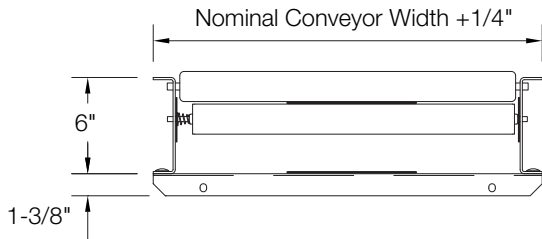
4" or 6" Diameter plain pulley.

#### Axle Isolators:

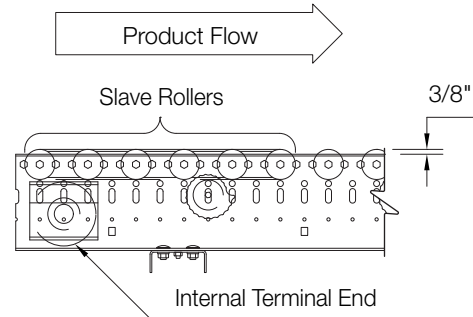
Specially designed conductive plastic insert isolates carrying roller axles from the conveyor frame to reduce noise and prevent wear.

## Technical Detail

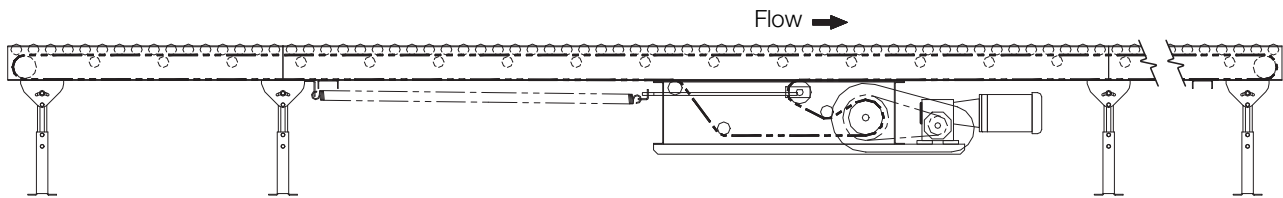
**Section View**



**Elevation View**



**Elevation View**



## Specifications

### Typical Applications

- Transportation
- Minimum Pressure Accumulation
- Picking Conveyor

### Live Load Capacity

Up to 100 lbs/ft. depending on width, roller centers, supports, etc.

### Nominal Widths

18\", 24\", 30\" and 36\"

### Between Rail Widths

15-1/2\", 21-1/2\", 27-1/2\" and 33-1/2\"

### Carrying Roller Centers

2\", 3\" and 4\"

### Pressure Roller Centers

9\"

### Options

- Take-Ups, Guard Rails, and Supports
- High Speed Rollers (std. over 180 FPM).
- Cog Belt Drive
- Power Take-Off Units
- Pop-Out Carrying Rollers
- Coated Rollers (at air brakes)
- Drop Kit
- Terminal End Covers
- Pop-Out Roller at Terminal End
- Automatic and Manual Case Stops
- Powder Coat or Galvanized Finish

# CLR Live Roller Conveyor Accumulation (LRPE)



Feature-for-feature, no other conveyor can match Automotion's Model CLRPE Zero Pressure Photo-Eye Accumulation Conveyor. There is no minimum weight restriction and it will convey a vast range of products in weights up to 100 pounds per foot while running smoothly, quietly, and stress free.

Automotion's custom designed photo-eye/solenoid module locally monitors and controls each zone. Multi-color LED's provide a constant status of the photoeye. A built-in adjustable time delay increases throughput by preventing intermittent slowing of the product load.

The photo-eye can detect a wide variety of products including very light product and product with uneven bottoms. It can also be skewed to sense totes or other irregular shaped product that leave gaps when accumulated. It loads and releases in singulation mode, slug mode, cascade release, and smart slug. It turns itself off in sleep mode.



## Mechanical Characteristics

### Bed Section

6" Deep x 10 Gauge CSC frame in 12" increments between 72" and 144". Accumulation zones are 24" or 36". Shop-cut lengths are available. AGL side covers.

### Galvanized Rollers

1-7/8" Diameter, 16 Gauge, with 7/16" hex axle. ABEC1 high speed bearings.

### Terminal End

Bolt-on unit. 4" Diameter pulley.

### Drives

6", 8", or 10" Center Drives and 8" End Drives. Lagged pulley. Automatic spring take-up. 1 HP to 5 HP. Speed range is 60-320 FPM. Chain drive or direct drive available.

### Axle Isolators

Specially designed conductive plastic insert isolates carrying roller axles from the conveyor frame to reduce noise and prevent wear.

### PhotoEye/Solenoid Zone Controller

24 VDC polarized retro-reflective photo-eye sensor. 24 VDC single zone or dual zone multi-function controller with adjustable time and function settings.

### Belting

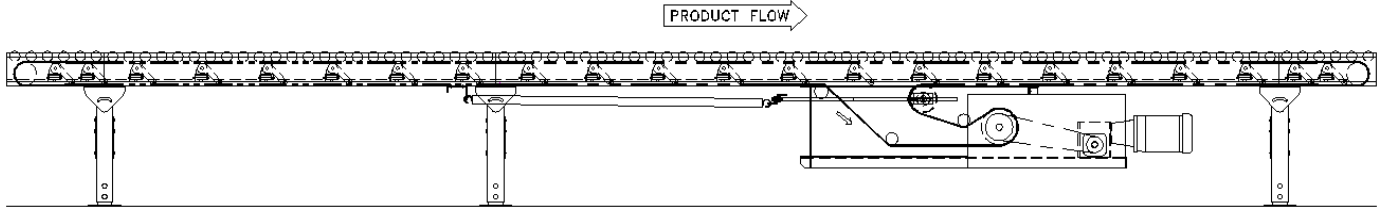
8" wide Type 1A polyester (PET) black fleece .

### Finish

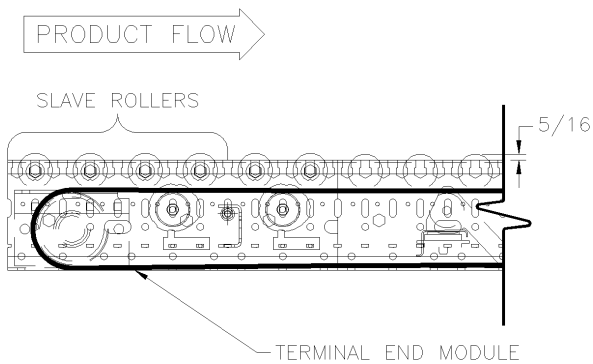
Light gray powder coat paint. Black side cover.

## Technical Detail

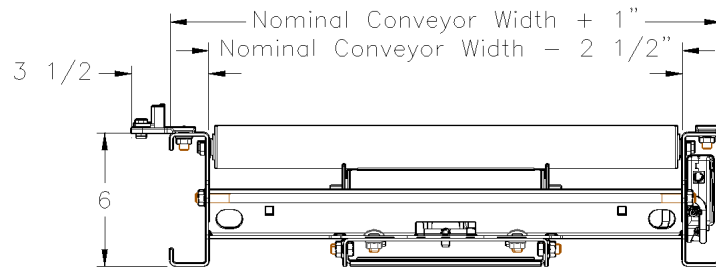
### Elevation View



### Elevation View



### Section View



## Specifications

### Typical Applications

- Transportation
- Zero Pressure Accumulation
- Staging
- Diverging & Merging

### Live Load Capacity

Up to 100 lbs/ft. depending on width, roller centers, supports, etc.

### Nominal Widths

18", 24", 30" and 36"

### Carrying Roller Centers

2", 3" and 4"

### Lifter Roller Centers

6" and 12"

### Standard Features

Pulley guards and covers.

Floor support and ceiling

hangers.

Bolt-on top guard rail 3", 6",

and 12" high. Powder coat

paint color flat black.

Guard rail system provides

nominal width between guard

rails.

### Options

- Horizontal or vertical take-up
- Chain drive or direct drive.
- Skew sensor 9" or 18".
- Under mount sensor.
- Bottom covers.
- Urethane Coated Rollers
- Automatic & Manual Air Brakes
- Pop-up case stop.
- Five standard optional powder coat paint colors. Special colors available.



# Transportation Air Live Roller Conveyor (TA)



Wynright's quiet running, versatile and economical live roller conveyor components are important elements of conveyor systems that require side loading and smooth integration of a countless number of processed materials from small to large sizes in weights up to 100 pounds per foot. Wynright's Transportation Air Conveyor provides a positive, non-adjustable driving force to the carrying roller assembly for positive transportation of product loads. The PLC controlled air feature responds to conditions monitored downstream, engaging and disengaging the drive belt as needed.

Wynright's live roller conveyor components are economical, versatile, flexible, durable, and easy to maintain. They feature specially designed belts, and galvanized rollers.



## Mechanical Characteristics

### Bed Section

6" Deep x 1-3/8" Flange x 10 Gauge frame in 12" increments between 12" and 144".

### Galvanized Rollers

1-7/8" Diameter, 16 Gauge, with 7/16" hex axle.

### Drives

6", 8", or 10" Center Drives and 6" or 8" End Drives. Lagged pulley with automatic spring take-up on center drive. 8" wide Type 6 Friction x Friction belting.

3/4 HP to 5 HP 230V-460V/3-Phase/60Hz. "C" face TEFC motor with reducer. Speed range is 60-320 FPM.

### Terminal End

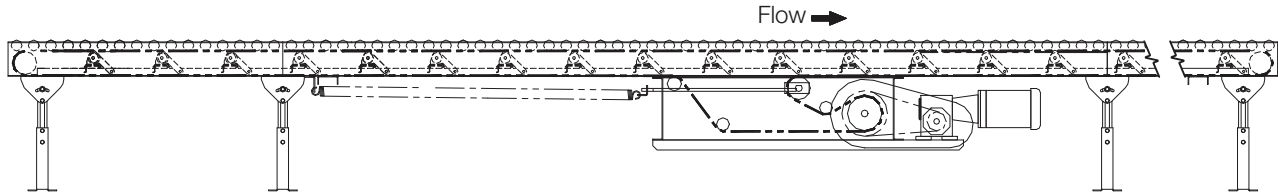
4" or 6" Diameter plain pulley with pop-out roller.

### Axle Isolators

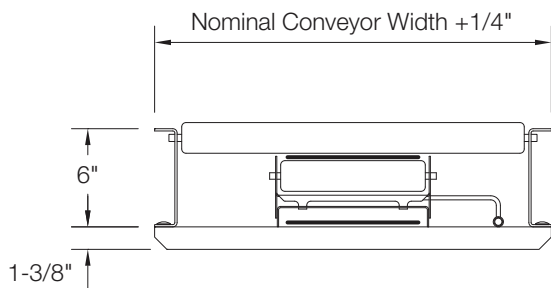
Specially designed conductive plastic insert isolates carrying roller axles from the conveyor frame to reduce noise and prevent wear.

## Technical Detail

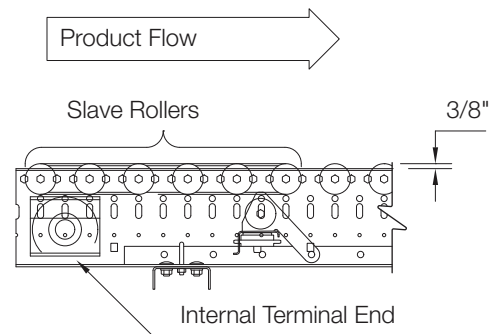
### Elevation View



### Section View



### Elevation View



## Specifications

### Typical Applications

- Transportation

### Live Load Capacity

Up to 100 lbs/ft. depending on width, roller centers, supports, etc.

### Nominal Widths

18", 24", 30" and 36"

### Between Rail Widths

15-1/2", 21-1/2", 27-1/2" and 33-1/2"

### Carrying Roller Centers

2", 3" and 4"

### Lifter Roller Centers

6" and 12"

### Options

- Take-Ups, Guard Rails, and Supports
- High Speed Rollers (std. over 180 FPM).
- Cog Belt Drive
- Power Take-Off Units
- Pop-Out Carrying Rollers
- Coated Rollers
- Machine Crown Pulleys
- Terminal End Covers
- Pop-Out Roller at Terminal End
- Automatic and Manual Air Brakes
- Powder Coat or Galvanized Finish

# Best Industry Warranty Conveyor/Sortation



At Wynright, we stand behind the quality of our work. We proudly extend our parts only conveyor and sortation warranty to two years at no additional cost. We understand our client's need to mitigate risk, especially when it comes to a malfunctioning product that prevents them from meeting the needs of their customers. As such, we will replace or repair any part or piece of equipment proving defective in material or workmanship for up to two years.

Our warranty is a statement of promise that ensures the quality of our product and it's performance. It is a testament to the full confidence we have in our product offering.

Our warranty clearly states the conditions of the warranty as well as who to contact for any repairs or replacement parts, whether they are third party or of our own manufacture.



- Two years from last major shipment plus 30 days!
- Easy replacement part ordering!
- Free outbound and return shipping within 2 weeks!



- 1** Order replacements online at [www.wynparts.com](http://www.wynparts.com) or directly with Wynparts at 844.202.3957
- 2** Complete the included RMA information provided with the replacement items
- 3** Return the defective item with RMA information within 2-weeks for free return shipping

*As easy as*



## **Warranty** (Effective January 1, 2018)

---

The Company warrants that equipment furnished, and the material used in its manufacturing, shall be free from manufacturing defects.

The Company's obligation under this parts-only warranty is for TWO YEARS from FINAL SHIPMENT - PLUS 30 DAYS, provided the Integrator provides notice in writing, and examination proves the claim that such materials or parts were defective when furnished.

The Company will replace or repair any part or equipment proving defective in material or workmanship. Assessment of warrantable defect will be verified by the Company, upon receipt of part (see Return Procedure below).

The Company will incur the cost for outbound shipment of the replacement part(s), via standard ground transportation. If the Integrator prefers or requires expedited freight, then the Integrator will be responsible for the entire outbound freight cost. The Company will also incur the cost for the return ground freight of defective parts if the Integrator returns the part within 2 weeks of receipt of the replacement part(s). Outside of 2 weeks, the shipping costs will be incurred by the Integrator. This freight policy only covers parts shipping to/from the continental U.S.

Deterioration of equipment due to normal wear and tear, abuse, overloading, maintenance neglect, exposure to corrosive or abrasive materials, misapplication, or excessive dampness shall not be deemed attributable to defectiveness of material or workmanship. Any modification to equipment without the Company's knowledge and consent voids this warranty.

The Company shall not be liable for loss of profits, delays or expenses incurred by failure of said parts, whether incidental or consequential. Consequential damages of any sort are wholly excluded.

The liability of the Company will be limited to the replacement cost of any defective part. All installation costs relative to any warranted part will be at the expense of the Integrator. Parts replaced under this warranty are subject to the same 2-year term as the original equipment.

If a Company/factory service representative is required for additional assistance, contact your Customer Service Project Coordinator. Labor will be charged at the prevailing rate, plus travel expenses.

Component parts not of our manufacture (such as motors, reduction units, electrical units, pneumatic controls, air cylinders) will be covered by the OEM's warranty. In case of failure during the warranty period, contact your Automation® Customer Service representative or the nearest authorized service representative of the manufacturer.

### **Warranty Return Procedure:**

- 1) Integrator must provide a purchase order. A replacement part will be sent, and the Company will issue an invoice for the replacement part.
- 2) The replacement shipment will include a Return Material Authorization (RMA). This RMA is valid for 60 days.
- 3) The RMA form must be completed and returned with the defective item. (See above. The Company will incur the cost for ground transportation if returned within 2 weeks.)
- 4) To receive credit consideration, the part must be returned to the Company within 60 days of receipt of the replacement part and the return part must be tagged with the RMA number and include the completed RMA form. Upon receipt, inspection and confirmation of warrantable defect, a credit will be issued.
- 5) No credit can be given for parts received after 60 days.
- 6) Only those parts specifically itemized on the RMA will be accepted for return.

If you have any questions regarding this Warranty Policy, please contact your Customer Service Project Coordinator.